

THE CCTV INDUSTRY'S BEST VALUE STANDALONE DIGITAL VIDEO RECORDERS



▣ GOOD ▣ BETTER ▣ BEST ▣ ULTIMATE

GOOD



The Watchguard Range of Standalone DVRs are ideal for use in a home or small business, where the owner is after a high quality Digital Video Recorder with entry level functions. The DVRs all utilise H.264 Video Compression technology, multiple backup methods and a user friendly On-Screen Display (OSD). The OSD can be easily navigated by the user via the front of the DVR panel, operated wirelessly using the included IR remote control or by connecting the USB mouse. Recorded video footage and images can be easily and quickly searched and viewed on the DVR. The DVRs all support smart-phone mobile surveillance on many popular mobile platforms. Supported platforms include the iPhone, BlackBerry & Windows Mobile. Remotely accessing the DVR through a network is supported via the licensed software "Video Viewer" and a supported internet browser. The DVRs are compatible with Internet Explorer, Mozilla Firefox and Google Chrome web browsers.



WATCHGUARD 4 Channel DVR
Model No: DVR4CHSOV6H264



WATCHGUARD 8 Channel DVR
Model No: DVRWG8ES



WATCHGUARD 16 Channel DVR
Model No: DVRWG16ES

100FPS@CIF

25FPS@D1

200FPS@CIF

50FPS@D1

400FPS@CIF

100FPS@D1



The DVRs are capable of offering mobile surveillance via many popular mobile platforms, supporting popular models such as iPhone, BlackBerry, Windows Mobile, & Symbian.



- H.264 video compression technology
- Resolutions: 704x576, 704x288, 352x288
- USB mouse control
- Intelligent motion recording
- Remote / mobile surveillance
- Live, record, playback, backup and network operation at the same time
- CD/DVD*/USB & Network backup

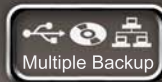
* DVD Backup only available on DVRWG8ES and DVRWG16ES. 4 channel machine supports only 1 HDD.

BETTER

SECURVIEW™

Introducing the Securview 100H Series of professional standalone Digital Video Recorders. These DVRs feature state-of-the-art H.264 video compression, smart-phone mobile surveillance support, multiple backup methods, advanced video motion detection, support for USB mouse control as well as a number of other premium features which make the 100H series great value for money. A key feature is the included Central Management Software (CMS) that allows multiple DVRs from multiple sites to be remotely viewed at the same time on the same screen.

These DVRs are ideal for mid to large level surveillance applications, and their user-friendly GUI, front panel operation and intelligent CMS software make them an accessible and affordable DVR solution.



SECURVIEW 4 Channel Standalone DVR
Model No: DVRSVIEW4100H

100FPS@CIF

50FPS@D1



SECURVIEW 8 Channel Standalone DVR
Model No: DVRSVIEW8100H

200FPS@CIF

50FPS@D1



SECURVIEW 16 Channel Standalone DVR
Model No: DVRSVIEW16100H

400FPS@CIF

100FPS@D1

- H.264 compression
- Realtime recording per channel at CIF
- Multiplex performance
- Dual stream capabilities
- ATM / POS text insertion
- User friendly GUI
- Advanced CMS software
- USB Mouse Control

- S.M.A.R.T: Self Monitoring Analysis and Reporting Technology
- Rackmountable 19" chassis
- Mobile Surveillance: WinMo/Android/iPhone



BEST

SECURVIEW™

This DVR's main highlight is its ability to record all 16 channels at 25FPS (real-time) in D1 (704 x 576) resolution. This is like saying it could record 16 different TV channels simultaneously, all at DVD quality. It would be an ideal choice for a retail store environment wishing to capture full cash register & customer activity. Apart from its high speed, high resolution recording there is also an inbuilt point of sale (POS) interface - allowing you to connect a cash register and then overlay the sale transaction data to the matching CCTV camera. You can even search for video from the saved POS text. This DVR also supports mobile surveillance, allowing monitoring of your cameras on compatible devices - such as iPhone, Blackberry, Windows Mobile, and Android Devices. The included CMS Software allows you to remotely monitor and manage multiple store sites on your network via one PC screen. The DVR is housed in a standard 19" rack mountable chassis, allowing it to be installed alongside your existing business rack mounted servers etc. There is provision to install up to 4 x 2 TB HDD's internally, with additional support for external storage. Overall this is an excellent choice if your budget doesn't quite stretch to our Ultimate Series DVR, or if you have a mixture of DVRSVIEW4/8/16100H machines also being utilised across your store network.



Securview High Resolution 16 Channel Real-Time 400FPS @ D1 Standalone DVR
Model No: DVRSVIEW16400H

16 CH 400FPS@D1



- H.264 compression
- Outstanding video quality: 16CH at 25FPS at D1(704 x 576)
- Dual streaming capability (record in high res, remote view in low res)
- ATM/POS text insertion: record and search transaction data
- Advanced CMS software: centrally view / manage multiple sites
- S.M.A.R.T: Self Monitoring Analysis and Reporting Technology
- e-SATA & network external storage (maximum 12TB)
- 19" rack mountable chassis
- USB mouse control



The DVR supports mobile surveillance via many popular mobile platforms. Supported models are iPhone, Blackberry, Windows Mobile & Android devices.



ULTIMATE

SECURVIEW™

The SECURVIEW™ Ultimate DVR is a state-of-the-art 16 Channel Real-Time DVR. This high performance standalone DVR can capture 400 frames per second at full D1 resolution. The DVR boasts incredible performance and ease of use, with a world-class graphical user interface, ultra reliable embedded Linux operating system, full remote viewing capability and multiple backup options.

You are looking at the best value real-time DVR available in Australia. The DVR has HDMI monitor support (ideal when connecting to a large LCD monitor / TV), Gigabit LAN, enhanced multi-layered motion detection with individual sensitivity settings, support for up to 8 SATA HDD's, and much more...

We dare you to compare this machine against any other premium brand standalone DVR on the market. You will not be disappointed.



Advanced CMS Software

H.264 compression	Multiple Backup	Mobile Support	WWW View On Internet	8 x HDD Max.	Motion Detection	D1 REC. Resolution
-----------------------------	-----------------	----------------	--------------------------------	-----------------	------------------	------------------------------

REAL-TIME LINUX BASED DVR

400FPS @ D1

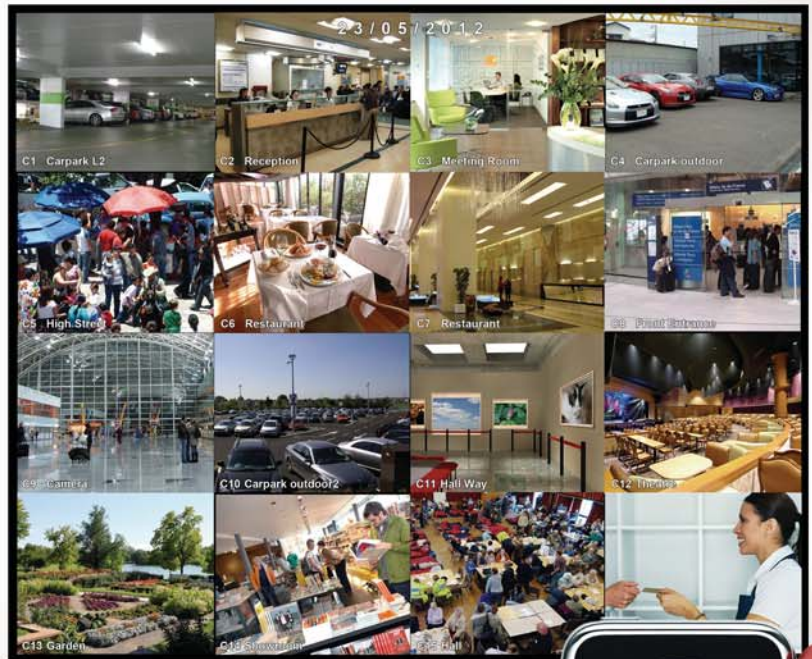
The DVR is capable of offering mobile surveillance via many popular mobile platforms, supporting popular models such as iPhone, BlackBerry & Windows Mobile.

Securview High Resolution 16 Channel Real-Time 400FPS @ D1 Stand-Alone
Model No: DVR16400D1V2



16 CH **400FPS@D1**

- Record & display at D1 resolution at 25FPS per camera
- Digital zoom function during preview and playback
- H.264 video compression
- Full HD (1080P)/HDMI video output
- Multi-layer motion detection with individual sensitivity settings
- USB, DVD-R, network backup
- Supports up to 8 harddrives
- Harddrive status & diagnostic display
- Stylish case design
- RS485 PTZ control
- 2RU 19" rack mountable
- User friendly software



THE ULTIMATE

MONITORS & BRACKETS



LCDSAM19943B (19") ▶



TFT19V-S (19") ▶



LCD19MON (19") ▶

SAMSUNG 17"/19" LCD Monitor With VGA & DVI Video Input

Model: LCDSAM1740R / LCDSAM19943B

Quality Samsung Monitor with 3 year warranty! Adjustable Stand: Height Adjustable, Pivot, Swivel 360°, Tilt. 5:4 aspect ratio for CCTV industry.

SPECIFICATION

Contrast Ratio	1,000:1
Response Time (ms)	5
Aspect Ratio	5:4
Max. Resolution	1280 x 1024
VGA PC Input	Analog 15 Pin D-Sub
Power	12VDC
Dimension (17")	W375 x H330 x D19mm
(19")	W 406 x H335 x D63mm

SAMSUNG 17"/19" LCD Monitor With Composite Video Input

Model: TFT17V-S / TFT19V-S

BNC input only. Quality Samsung Monitor with 3 year warranty! Height Adjustable, Pivot, Swivel 360°, Tilt. 5:4 aspect ratio for CCTV industry.

SPECIFICATION

Contrast Ratio	1,000:1
Response Time (ms)	5
Aspect Ratio	5:4
Max. Resolution	1280 x 1024
VGA PC Input	Analog 15 Pin D-Sub
Power	12VDC
Dimension (17")	W375 x H330 x D19mm
(19")	W 406 x H335 x D63mm

Warranty by Cornick Pty. Ltd. - BNC & DVI inputs only, VGA function removed. 1280 x 1024 @ 60Hz.

SECURVIEW 17"/19" LCD Monitor With Glass Front Protection

Model: LCD17MON / LCD19MON

5:4 aspect ratio, perfect for security monitoring industry. Glass front protection make it easy to clean and to protect the screen from scratches.

Models	LCD17MON	LCD19MON
Contrast Ratio	600:1	1000:1
Response Time (ms)	8	5
Aspect Ratio	5:4	
Max. Resolution	1280 x 1024	
VGA PC Input	Analog 15 Pin D-Sub	
VESA Mount	75 x 75mm	
Power	12VDC	
Dimension (17")	W382 x H335 x D25mm	
(19")	W420 x H370 x D30mm	

SECURVIEW™



LCD / TFT Wall-Mount Bracket with Tilt

Model: TFTBRACKET

- Std VESA 50/75/100/200/100x200
- 90° horizontal swing + 20° vertical tilt
- 100mm spacing
- Max load 30Kg

SECURVIEW™



LCD / TFT Wall-Mount Bracket w/ Tilt / Swivel

Model: TFTBRACKETSW

- Std VESA 50/75/100/200/100x200
- Tilt/ swivel adjustments
- Max load 30kg

SECURVIEW™



Standard Ceiling Mount LCD Bracket

Model: VSCACMB

- Standard VESA 50/75/100
- Adjustable drop 500-850mm
- Easy to install
- Max load 20kg

Your Local Dealer: