

15th
Edition

Rhino[®]

The Revolution In Australian Designed Vehicle Security

- Vehicle Alarm Systems
 - Engine Immobilisers
 - GPS Vehicle Tracking Systems
 - Mobile Digital Video Recorders
 - Reversing Cameras
 - Parking Sensors
 - Central Locking
 - Universal Remotes
- & more...



*If You Love Your Vehicle
It Needs Protecting!*


RhinoCo[®]
TECHNOLOGY
www.rhino.com.au

VEHICLE SECURITY & AUTOMOTIVE ELECTRONICS CATALOGUE

RHINOCO TECHNOLOGY COMPANY PROFILE

Cornick Pty Ltd (Trading as RhinoCo Technology) has been part of the electronic security industry since 1978. Our company is proudly Australian-owned and still growing after 32 years in business. We have become best known over the years for our world-renowned "Rhino" brand of vehicle security systems, our Watchguard™ brand of wireless security systems and our Securview™ range of professional video surveillance equipment.

Rhino Vehicle Security Systems have become the preferred choice of hundreds of thousands of vehicle owners around the world due to leading-edge Australian product design, superior reliability, along with unparalleled technical service and support.

This catalogue highlights our latest vehicle security range including alarms and immobilisers, reversing cameras, tracking systems, mobile digital video recorders and various other accessories. We feel it is sure to contain a product that will suit both your feature requirements and budget perfectly!

Over the years, RhinoCo has pioneered the introduction of a number of key vehicle security technologies in Australia, including Code Hopping Remote Technology, intelligent ETS™ Environment Tuned car-body impact Sensors and alarms with mobile phone paging via SMS messaging. Some models even have compatibility with RhinoCo's wireless intrusion sensors and new wireless keypad with PIN protection for maximum security. Many features are user-programmable and can be easily customised to suit your needs. A number of models have also been independently tested and approved to meet the latest Australian Standards and are endorsed by numerous insurance companies.

RhinoCo currently employs over 40 staff in Australia who are involved in product design & engineering, quality assurance, sales, technical service and administration. We currently utilise an ISO9001 quality assured manufacturing facility outside of Australia to produce our alarm & immobiliser designs at world competitive prices, enabling them to be sold into various export markets worldwide. We also produce a number of systems under special OEM arrangements.

RhinoCo has forged strategic alliances with various leading worldwide manufacturers of related accessories such as central locking systems, reversing sensors and cameras, vehicle tracking systems and mobile digital video recorders. These items are sold and supported under the trusted Rhino brand name, offering customers a vast range of quality products to choose from covering all areas of after-market vehicle security and safety.

Please feel free to visit our website at www.rhino.com.au for full product information, including downloadable versions of the latest product brochures and manuals.

Here at RhinoCo, we will always endeavour to support *YOU*, our valued customer with a wide range of leading-edge, value for money products and the best technical support in the industry. Let us prove it to you!



Security Master Licence: 407530935

Due to continual product advancement, specifications and appearance are subject to change without notice.

©2010 RhinoCo Technology





CAR ALARMS & ENGINE IMMOBILISERS 4

LS Entry Level DIY Remote Controlled Car Alarm.....	4
GA Remote Controlled Car Alarm With Engine Immobiliser.....	4
GTR Backup Battery Car Alarm & Immobiliser.....	5
GTS Backup Battery Car Alarm With 2 Point Immobiliser.....	5
RAV3 ASA Car Alarm, 3 Point Engine Immobiliser and Glass Break Sensor.....	6
RAKP ASA Upgrade Car Alarm & Immobiliser With Wireless Keypad.....	7
TRANS Upgrade Alarm System For Vehicles With Factory Keyless Entry.....	7
RAM Car Alarm & Immobiliser with 2-Way GSM Mobile Communication via SMS Text Messaging.....	8
TSMS Add-On SMS Paging System For Vehicles With Existing Factory Alarm....	9

ENGINE IMMOBILISERS 10

RCXI Remote Keyless Entry & Basic Immobiliser System.....	10
RXPROR4 Multi-Function Receiver/Transmitter Set.....	10
RES4601V2 ASA Remote Control 2 Point Engine Immobiliser.....	11
JAG ASA Remote Control 3 Point Engine Immobiliser.....	11

VEHICLE TRACKING & MOBILE VIDEO RECORDER 13

MDVR-GPS Vehicle Mobile Digital Video Recorder With GPS System.....	13
MDVR-XD In-Car Black Box Recorder.....	14
MDVR-TAXI Vehicle and Driver In-Car Recorder System.....	16
Rhino Tracks™ Vehicle Tracking Via The Internet.....	18
GPS Trackers for Personal and Business Use.....	19

REVERSING CAMERAS & PARKING SENSORS 20

VSDS-RVM4.3 Rearview Mirror with 4.3" in-built Monitor & Number Plate Camera Kit....	20
VSMT-BUMPCAM Bumper-fit Reversing Camera.....	20
VSMT-MINICAM Ultra Small Wing Mount Reversing Camera.....	20
VSMT-TRUCKCAM Truck Reversing Camera with IR LEDs.....	20
VSDS-BUMPCAM Flush Mounted Bumper Camera with IR LEDs.....	20
LCD7 7" Monitor with Remote Control.....	21
VSMT-RVM Digital Vehicle Reversing Mirror with Built-In 4" Colour LCD Screen	21
REVERSE4B 4 Channel Car Reversing Sensor with 'Audible Alert'.....	21

WIRELESS ALARM SYSTEM WITH SMS ALERT 22

WGSMS2010 Watchguard™ SMS 2010 Wireless Alarm System with SMS Alert ...	22
Watchguard™ Wireless Alarm Sensors and Accessories.....	23

ACCESSORIES 24

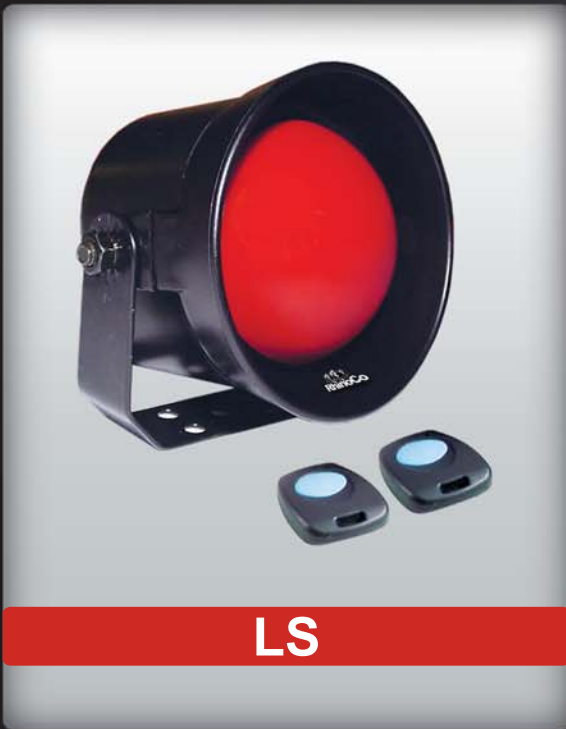
Central Locking.....	24
Sirens and Vehicle Alarm Accessories.....	25
Remote Controls.....	27

Entry Level DIY Remote Controlled Car Alarm

Model: LS

The Rhino LS is an entry level car alarm system featuring remote control operation, a 2-Stage Pre-Warning Car Body Impact Sensor and Door Protection via voltage drop (current sensing) i.e. when armed, if your car door is opened and the interior light turns on, the alarm will sound.

- 2 x Compact Size Security Coded Remote Controls
- Can Protect Doors and Boot via Voltage Drop (Current) Sensing
- 2 Stage (Pre Warning) Car Body Impact Sensor
- Unique Watchguard™ Wireless Alarm Sensor Compatibility (Max. 3, See Page 23)
- Negative On Arm Output For Optional Engine Immobiliser Circuit (Relay Required)
- Can Be Installed With Just 2 Wire Connections (Power & Earth)
- Automatic Siren Reset After 30 Seconds
- Easy Learning Mode for Additional Remote Controls (max. 5)
- Personal Panic Function via Remote
- Alarm Dimension: 90(W) x 77(D) x 90(H) mm



LS

Remote Controlled Car Alarm With Engine Immobiliser

Model: GA

The Rhino GA is a compact All-In-One design car alarm with doors, boot and bonnet protection and a single engine immobilisation circuit. It also features central locking outputs for remote keyless entry connection and visual arm / disarm confirmation via your indicators.

- 2 x Compact Size Security Coded Remote Controls
- Engine Immobiliser via External Relay (Included)
- Arming Confirmation Via Indicators
- 'Armed Status' Notification
- Can Protect Doors, Boot and Bonnet
- Automatic Siren Reset Period (30 Seconds)
- 2 Stage (Pre Warning) Car Body Impact Sensor
- Alarm Trigger Memory
- Safety Circuit Prevents Arming While Ignition On
- Learning Mode for Additional Remote Controls (Max. 4)
- Personal Panic Function via Remote
- Programmable Features (Auto Re-arm & Quiet Arm / Disarm)
- Can Connect to Central Locking For Remote Keyless Entry
- Alarm Dimension: 105(W) x 11(D) x 80(H) mm



GA

Backup Battery Car Alarm & Immobiliser

Model: GTR

The Rhino GTR is a well featured mid-level car alarm and engine immobiliser. It is a popular choice for budget minded owners looking for most standard alarm features plus connection to their existing central locking and electric boot for keyless entry. The compact size siren is easy to install in cramped engine bays.

- 2 x Remote Controls
- Smart Code Learning Technology
- 1 Point Engine Immobilisation (Onboard)
- Can Protect Doors, Boot, Bonnet
- Car Body Impact Sensor
- Single Tone Mini Backup Battery Siren
- Automatic Siren Reset (30 seconds)
- Central Locking Relay Outputs for Keyless Entry
- Boot Release via Remote (where fitted)
- Split System - Separate Siren & Central Module
- Flashes Indicators
- Arm/Disarm Beep
- Flashing Red Dash Light
- Emergency Panic via Remote
- Car Finder Function
- Current (Voltage Drop) Sensing
- Security Override Mode
- Programmable Features (Inc. Passive Arming, Auto Re-arm & Quiet Arm / Disarm)
- Module Dimension: 110(W) x 72(D) x 43(H) mm



GTR

Backup Battery Car Alarm With 2 Point Immobiliser

Model: GTS

The Rhino GTS is a highly featured mid-level car alarm and engine immobiliser. It features code hopping remote technology, a full size backup battery siren and numerous programmable features. The two onboard engine immobilisation relays can be used to cut both your starter motor and fuel pump.

- 2 x Code Hopping Remote Controls (Anti - Scanning, Anti - Code Grabbing)
- 2 Stage Car Body Impact Sensor
- 2 Point Engine Immobilisation (On Board Relays)
- Flashing Red Dash Light
- Protects Doors, Boot, Bonnet
- Central Locking Relay Outputs for Keyless Entry
- Emergency Panic & Sensor Isolation via Remote
- Boot Release via Remote (where fitted)
- Current (Voltage Drop) Sensing
- Automatic Siren Reset (30 seconds)
- Alarm Memory
- Security Override Mode
- Split System - Separate Siren & Central Module
- Also Available in 24 Volt Version (Model: GTS24V).
Please Note: GTS24V Siren is non battery backup
- Module Dimension: 110(W) x 85(D) x 30(H)



GTS

Australian Standards Approved Car Alarm and Upgrade (All-in-one Design), inc. 3 Point Engine Immobiliser and Glass Break Sensor

Model: RA (V3)

The Rhino RA (V3) is one of our top quality Australian Standards Approved Car Alarm. It has been engineered to the highest specifications to give you the ultimate in car security, making it recommended for all high theft-risk vehicles. It is Australian Standards Approved (AS3749.1:2003 Class A) and has a range of product features including:

- Three Point Engine Immobilisation (onboard relays)
- Code Hopping Remote Technology (Anti-Scanning, Anti-Code Grabbing)
- Auto Immobilise (Passive Arming)
- All Points Of Entry Alarm Protection (Doors, Boot, Bonnet)
- Audio Discriminating Glass Break Sensor
- Personal Panic Button via Remote Control (siren sounds & indicators flash)
- 2 Stage Pre-Warning Car Body Impact Sensor With ETS™
- Alarm Memory (allows recall of the 10 most recent alarm activations in order)
- Auto Bypass (prevents false alarms caused by faulty sensors / or switches)
- Visual Arming and Disarming via Indicators
- Main Unit Dimension: 115(W) x 42(D) x 90(H) mm



Alarm features:

NEW Control the alarm with your vehicle's factory key

If your vehicle has a factory key that locks/unlocks the doors your RA alarm may be able to interface with it so the alarm arms/disarms at the same time. Boot release will also work from the factory key (and if the alarm is armed it will disarm). This feature will work with most factory keys.

Intelligent glass break sensor

Detects the sound frequency of breaking glass. It will only trigger the alarm if the shock sensor also picks up an impact, reducing false alarms.

Intelligent dual stage shock sensor with ETS™

Gives a multiple beep audible warning on a light impact and a full alarm on a heavy impact to the vehicle. Our Environment Tuned Sensor (ETS™) can distinguish between environmental shocks such as trucks or aircraft and a thief attempting to break in. It will auto adjust its sensitivity to suit the environment on arming.

Data battery back-up siren

This high-powered ultra compact siren communicates with the alarm module via Data Transmission so it cannot be fooled into turning off like a normal battery back-up siren. If vehicle power is disconnected, the siren still functions.

Door, bonnet and boot protection

If the alarm is armed and a door, bonnet or boot is opened the alarm will sound.

Central locking from the remote

The alarm will lock/unlock the doors when the alarm is armed/disarmed.

Three automatic immobilisers

For maximum security fuel pump, ignition system and starter motor immobiliser cuts (where possible) are made so the car cannot be started unless it is disarmed via the remote. The system will immobilise 40 seconds after the ignition is turned off automatically or when the alarm is armed.

Two rolling code 4 button waterproof remotes

These ultra secure remotes cannot be copied or scanned. If you are not using your car's factory key to operate the alarm, these will operate the alarm functions.

*Turbo timer functions

The RA is designed specifically to work with turbo vehicles. It has two turbo timer options to choose from.

On-board turbo timer - no need to fit an external unit - using the on-board turbo timer is the most secure way to have a turbo timer. The alarm is armed as usual but the car will continue to run for the preset run time of 1, 2 or 4 minutes. If the alarm is triggered during this time the car will shut down and the alarm will sound. It can also be turned off prior to the preset run time via the remote.

Turbo timer interface - link the alarm up with your existing external turbo timer so your car will continue to run on the external turbo timer after the alarm is armed as usual. If the alarm is triggered during this time the car will shut down and the alarm will sound.

*NEW Courier function

Courier function allows the engine to continue running indefinitely while the system is armed. If the alarm is triggered during this time the car will shut down and the alarm will sound. Simply keep the remote on your person.

* Note: Use of these special installer selectable features will void Australian Standards Approval.

Australian Standards Approved Upgrade Car Alarm & Immobiliser With Wireless Keypad

Model: RAKP

Unfortunately, large numbers of high-risk vehicles are now being stolen by thieves gaining access to the owner's car keys. With the RAKP, even if your car keys are stolen (including possibly your factory remote control) the RAKP can not be disarmed without entering your chosen PIN number. The Rhino RAKP is a variant of the RA Model and is designed primarily for use in modern high theft-risk vehicles with factory remote controls. The inclusion of our special wireless keypad prevents anyone from being able to disarm the alarm and start the vehicle unless they enter the chosen 4 digit PIN number within 20 seconds of opening one of the car doors.

- Auto-Immobiliser - The 3 onboard immobilisation circuits automatically activate 38 seconds after turning the ignition off.
- Auto Arming Alarm (Programmable) - If the car ignition is switched off and a door is opened and closed, the alarm can be set to arm automatically.
- Manual Arming - You can also turn the alarm function on manually via your PIN number if you don't want to use the automatic function all the time.
- The wireless keypad uses long-life lithium batteries and has backlit keys for night time illumination.
- Main Module Dimension: 115(W) x 42(D) x 90(H) mm



“Transformer” Upgrade Alarm System For Vehicles With Factory Keyless Entry

Model: TRANS

If your vehicle is fitted with a factory remote keyless entry system, and you would prefer not to have a second remote control on your keyring (because your ignition key is part of the factory remote control), then the Rhino Transformer is your system of choice. Whenever you lock and unlock your vehicle with the factory remote, your Transformer alarm will arm/disarm in turn. The Transformer is simply a variant of the RA system with identical features - except there is no need for remotes. The connection of engine immobilisation circuits (up to 3) in addition to the factory immobiliser is optional, but at least 2 must be connected to meet Australian Standards requirements.

- Australian Standards Approved AS/NZ 3749.1 2003
- Three Point Engine Immobilisation (onboard relays)
- All Points Of Entry Protection (doors, boot, bonnet)
- 2 Stage Pre-Alert Car Body Impact Sensor With ETS™
- Alarm Memory (allows recall of the 10 most recent alarm activations in order)
- Auto Bypass (prevents false alarms caused by faulty sensors / or switches)
- Visual Arming and Disarming via Indicators (Optional)
- Main Module Dimension: 115(W) x 42(D) x 90(H) mm
- Audio Discriminating Glass Break Sensor
- Auto Immobilise (Passive Arming)
- Ultra-Bright Red Flashing LED Light to indicate 'Armed Status'
- Backup Battery Siren
- All Black Wiring Harness



RECEIVE SMS ALERT MESSAGES FROM YOUR CAR!



The Rhino RAM



Car Alarm & Immobiliser With 2-Way GSM Mobile Communication via SMS Messaging

Model: RAM

Be Alerted When Your Car Alarm Is Triggered PLUS Solve The Issue Of:

Locking Your Keys In Your Car

This is achieved by sending a message to the alarm to unlock the doors.

The Rhino Model RAM is arguably the world's most advanced car alarm system. This system enables 2 way communication between you and your vehicle via a GSM mobile phone. The RAM is a high specification, all-in-one car alarm and immobiliser, with GSM mobile phone communication via SMS Text Messaging.

SIM Card required

The RAM Alarm & Immobiliser Features:

- Code Hopping Remote Control Technology
- 2 Stage "Auto Adjust" Car Body Impact Sensor
- Doors, Boot, Bonnet Protection
- 2/3 Point Engine Immobilisation
- Audio Discriminating Glass Break Sensor
- Central Locking And Boot Release Outputs
- Backup Battery Siren
- Over 20 Programmable Features
- All Black Wiring Harness
- 3 SMS Controllable Negative Outputs
- No GSM Coverage Warning On Arming

By Sending An SMS Message With Your PIN Number From Your Mobile Phone To Your Vehicle You Can:

- Acknowledge Receipt of an Alarm Message
- Remote Immobilise the Engine
- Remote Arm & Disarm the System
- Remote Unlock the Doors
- Plus Much More.....

Your Rhino RAM Can Send Detailed SMS Messages To Up To 5 Mobile Phones Advising:

- Alarm Activation and Cause – If no response, your RAM will dial the first programmed number
- Panic / Duress Activation
- Car Low Battery Warning

Wireless Alarm Sensor Capability:

- Compatible With Rhino's Full Range Of Optional Wireless Alarm Detectors

“Transformer SMS” Add-On SMS Paging System For Vehicles With An Existing Alarm

Model: TSMS

The “Transformer SMS” adds state-of-the-art 2 way GSM mobile phone communication to your existing factory or after-market car alarm system. If you intend to rely on the existing alarm system fitted in your vehicle, this product enables you to be notified on your mobile phone if the alarm is activated. You can also connect to your existing central locking to allow you to unlock your car from your mobile in case you ever lock your keys in your car!

- Notification of Factory Alarm Activation via SMS Text Message
- Receive SMS Alerts When Your Car Battery Is Low
- Up To 5 People Can Be Notified Upon Alarm Activation
- Failure To Respond To An SMS Alert Causes The System To Ring The Primary User To Gain Maximum Attention
- 3 Independent Negative Outputs Can be Controlled via SMS Message
These may be Used for Remote Arming or Other Functions Such as Opening Electric Gates, Remote Immobilisation...etc.
- SMS Controlled Central Locking Outputs
- User Selectable 6 Digit PIN Number
- GSM Sim Card Required
- Main Module Dimension: 130(W) x 88(D) x 40(H) mm



TSMS

‘SMS ALERT INTERFACE’

Add-On SMS Paging Module For Existing Alarms Systems With 2-Way GSM Mobile Communication via SMS Text Messaging.

The Rhino TSMS ‘SMS Alert Interface’ is ideal for use:

In vehicles that already have an alarm installed

It adds the convenience of being able to receive SMS messages advising if your alarm has been activated, plus the ability to send SMS messages to control the alarm & auxiliary outputs such as central locking.



Alarm Activated: Door

For home & business alarm systems

The TSMS can be connected to existing alarm panels to allow you to receive an SMS message when the alarm has been activated, plus the ability to send SMS messages to control up to 3 auxiliary outputs such as remote arming, opening electric gates, turning on lights etc.



Intruder Alert

For commercial & industrial use

Example installation - connect the TSMS to your cool room failure alarm to allow you to receive an SMS message when the alarm has been activated. Plus the ability to send SMS messages to control up to 3 auxiliary outputs such as turning on a backup generator etc.



Cool Room Failure



Control up to 3
auxiliary devices via
SMS messaging.

Remote Keyless Entry & Basic Immobiliser System

Model: RCXI

This product can be used to remote control your existing car central locking and electronic boot release. It has indicator flash outputs and includes a single engine immobilisation circuit. The RCXI can also be used for remote controlling your garage door, home alarm system, or your electric gate.

- Adds Remote Controlled Functionality to Existing Key Operated Central Locking
- Remote Code Hopping Technology
- Operating Range of Approximately 150 Metres (Open air, LoS)
- 1 Second (Momentary) Negative Central Locking Outputs for Each Channel
- Electric Boot Release Output
- Optional Connection to Flashing LED, Engine Immobilisation Relay & Indicators
- Ultra Compact Module Dimension: 60(W) x 30(D) x 13(H) mm



RCXI

Multi-Function Receiver / Transmitter Set

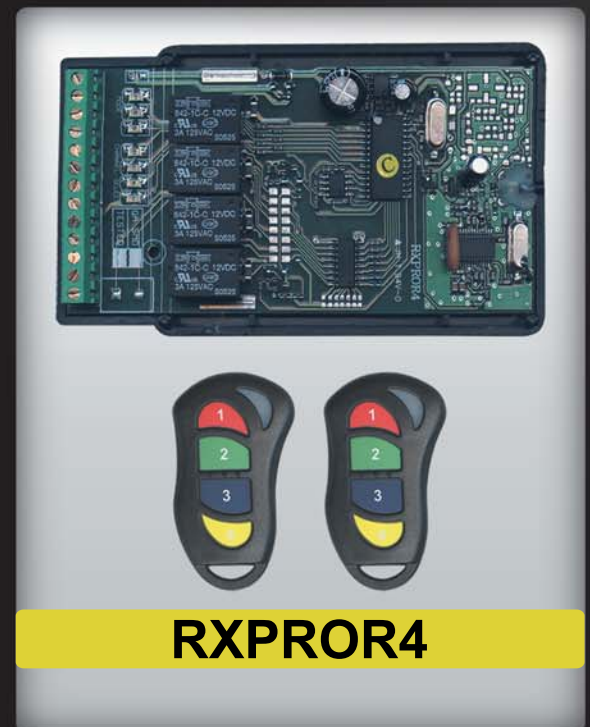
Model: RXPROR4

The RXPROR4 is an advanced multi-purpose 4-channel narrow-band UHF receiver/ transmitter set with fully programmable relay outputs (1 amp relays). It is supplied as standard with 2 x 4-Button Code Hopping Remote Controls.

- All outputs are individually programmable to suit almost any application (momentary, latched, timed or pulsed)
- High Security Code Hopping Remotes (anti-scan, anti-code grabbing)
- Compatible with Rhino **Watchguard™** Wireless Alarm Detectors (Pg 23)
- Up to 200 metres radio frequency range (line of sight)
- Up to 5 Code Hopping remote controls can be used
- Up to 4 Wireless Detectors can be used
- Step by Step Programming via remote control
- Power Supply Requirement: 12VDC @ 500mA

Want to control your Garage Door, Electric Gate or Home Alarm from your car alarm remote?

The RXPROR4 is compatible with our RES4601V2, JAG, RAV3 and RCXI models. You may use channel 4 on the RXPROR4 Remote to learn in an extra function (ie: Open/Close Garage Door), removing the need to have multiple remote controls.



RXPROR4

Australian Standards Approved Remote Control 2 Point Engine Immobiliser

Model: RES (RES460 IV2)



The Rhino RES Engine Immobiliser is an Australian Standards Approved System and features passive arming, all black wiring and 2 engine immobilisation circuits. It also has a negative on alarm output on door and ignition activation to allow an optional siren to be connected (model: SBB or MINISBB; see Page 25) for basic alarm function.

- Australian Standards Approved: AS/ NZS 4601:1999
- 2 Point Engine Immobilisation (Onboard Relays)
- Code Hopping Remote Technology (Anti-Scanning, Anti-Code Grabbing)
- Auto Immobilise (Passive Arming)
- 30 Second Automatic Siren Reset & Rearm (If optional siren connected)
- Ultra-Bright Red Flashing LED Light
- Personal Panic Button via Remote Control
- Visual Arming and Disarming Confirmation via Blinkers
- Negative Pulse Central Locking Outputs
- Numerous Programmable Features Including Perimeter Night Light & Anti Hijack Functions
- All Black Wiring Harness
- Insurance Approved
- Main Module Dimension: 115(W) x 42(D) x 90(H) mm

Australian Standards Approved Remote Control 3 Point Engine Immobiliser

Model: JAG (V3)

The Rhino JAG (V3) is our top-of-the-range Engine Immobiliser and it's recommended for all high theft-risk vehicles. It is approved to the latest Australian Standard and features 3 onboard engine immobilisation relays plus all black wiring. The additional option of utilising the Rhino wireless keypad means maximum protection for your vehicle.

- Australian Standards Approved: AS / NZS 4601:1999 / Amdt 1:2003
- Insurance Approved Including Specialist Insurers
- Three Point Engine Immobilisation (onboard relays)
- Code Hopping Remote Technology (Anti-Scanning, Anti-Code Grabbing)
- Auto Immobilise (Passive Arming)
- Automatic Re-arm In Case Of Accidental Disarm
- Ultra-Bright Red Flashing LED Light to indicate 'Armed Status'
- Visual Arming and Disarming via Indicators
- Onboard Central Locking Relay Outputs
- Optional Wireless Keypad Compatible
- Numerous Programmable Features Plus Upgradable To Full Alarm System
- Main Module Dimension: 115(W) x 42(D) x 90(H) mm



Main Features	Car Alarms with Immobilisers							Upgrades		Immobilisers		
	LS	GA	GTR	GTS	RA	RAKP	RAM	TRANS	TSMS	RCX	RES*	JAG*
Arm / Disarm Beep	●	●	●	●	●	●	●	●			Opt	Opt
Remote Panic	●	●	●	●	●		●				■	■
Backup Battery Siren			●	●	●	●	●	●			Opt	Opt
Alarm Trigger Indication on Return to Vehicle	●	●	●	●	●	●	●	●			●	●
Automatic Siren Reset & Rearm		■	■	■	●	●	●	■			●	●
Protects Doors, Boot, Bonnet		■	●	●	●	●	●	●			Doors	●
Car Body Impact Sensor	●	●	●	●	●	●	●	●			Opt	●
Current Sensing	●	■	■	■	●	■	■	■			■	■
Engine Immobilisation (Points)	1- Opt	1	1	2+1- Opt	3	3	2+1- Opt	3		1- Opt	2+ 1 Opt	3
Remote Controls (Number Supplied)	2	2	2	2	2	1	2	N/A	N/A	2	2	2
Flashes Indicators		●	●	●	●	●	●	●		Opt	●	●
Flashing Red Dash Light to indicate 'Armed Status'	●	●	●	●	●	●	●	●	●	Opt	●	●
Security Override			●	■	■	■		■		●	■	■
Central Locking / Keyless Entry Outputs	●	●	●	●	●		●	●		●	●	●
Auto Rearm & Relock		■	■	■	■	■	■	■			■	■
Silent Operation (Disable Siren)		■	■	■	■	■	■	■			■	■
Ultrasonic or Microwave Sensors		Opt	Opt	Opt	Opt	Opt	Opt	Opt	Opt		Opt	Opt
2 Stage (Pre-Warning) Car Body Impact Sensor	●	●		●	●	●	●	●				●
Electric Window Lift	Opt	Opt	Opt	Opt	Opt	Opt	Opt	Opt		Opt	Opt	Opt
Passive Arming Alarm Function			■	■	■	■	■	■			■	■
Diagnostic Alarm Memory	●	●		●	●	●	●	●			●	●
Split System - Separate Siren & Control Unit			●	●	●	●	●	●				
Code Hopping Remote Technology				●	●	●	●			●	●	●
Boot Release via Remote (where fitted)			●	●	●		●	●		●	●	●
Quiet Arm / Disarm		■	■	■	■	■	■	■			■	■
Door Ajar Warning		■	■	■	■	■	■	■			■	■
Passive Arming Immobiliser					●	●	●				●	●
Door Lock on Ignition (Anti Hijack)					■	■	■				■	■
Perimeter Night Light (Indicators Hold On Disarm)					■	■	■	■			■	■
Auto Adjust ETS™ Car Body Impact Sensor	●	●			●	●	●	●				●
All Black Wiring Harness					●	●	●	●	●		●	●
Glass Break Sensor (Audio Discriminating)					●	●	●	●				●
Approved to relevant Australian Standards					●	●		●			●	●
2 Way GSM Mobile Phone Communication (SMS)							●		●			
Requires GSM SIM Card							●		●			
Wireless Key Pad Compatible					●	●	●			●	●	●
Wireless Alarm Detector Compatible	●						●					

- = Standard Feature
- = Programmable (can be turned on or off)
- Opt = Option at Additional Cost

* Note Regarding Models RES & JAG Immobilisers: Alarm features listed are only available when an optional siren is installed.



4 Camera System Vehicle Mobile Digital Video Recorder With GPS Receiver

Model: MDVR-GPS (V2)

The NEW Rhino 4 Channel Vehicle Mobile Digital Recorder with GPS Receiving Unit is the ideal product for a number of applications, including:

- Monitoring driver behaviour
- Proving deliveries have been made
- Providing video evidence in the event of an accident.
- GPS Vehicle Tracking

The unit includes an A/V Input loom to allow you to connect up to 4 cameras to the device (For recording views such as front view, rear view, driver view, passenger/cargo view). The recorded footage is stored on the removable 2.5" Hard Drive, and can be backed up via USB.

The functionality of the unit can be increased through the use of optional accessories, such as a Driver Action Detecting Box (To provide notifications when turn signals are used, when brakes are applied, when doors are opened and other similar functions)

Main Product Features

High Quality Images, Long Recording Time

The unit has codec support for both MPEG-4 and JPEG hardware video compression. The system settings allow the user to change the framerate for different recording modes, to make more efficient usage of storage space. The recorded footage can be continuously overwritten when the HDD is full (FIFO).

Simple OSD

The user friendly graphical interface offers a simple menu structure, allowing users to quickly search and playback footage, change settings and back up footage onto USB drives. The menu and OSD are navigated by using the included IR remote control.

Automatic Digital Recording When Vehicle Ignition Is On

When the vehicle's ignition is on, the system can be set to automatically record (continuous record); no driver interaction is required. You can also choose to have recording commence only when video motion is detected (motion record) or when an alarm switch is activated (alarm record). By only recording motion or alarm events, there is less unnecessary footage recorded to the hard drive, maximising the storage space.



Monitor not included

Optional Sensor Connections

- Brake ON
- Indicators ON/OFF (Left/Right)
- Door(s) OPEN
- Reverse gear selected

USB Backup Function

The unit features multiple USB backup methods, accessible by using the USB ports on the front of the unit. You can backup the entire HDD contents to a portable HDD or you can select the desired footage timeframe and backup to a USB Flash Drive.

GPS Receiver and Vehicle Location Tracking Software

The GPS receiver is connected to the main MDVR and then positioned within the vehicle to receive the best GPS signal. The GPS receiver records the vehicle's location and speed, the date, time and direction of travel. After downloading the footage onto a PC, the GPS data is overlaid onto the recorded footage, displaying the vehicle positioning on Google Maps™*.

* Google Earth is the trademark of Google Inc. The download and use are subject to applicable terms and conditions of Google Inc. RhinoCo Technology is in no way affiliated or associated with Google Inc. or any of its subsidiaries.

The Next Generation of Driving Recorder Systems

Vehicle Driving Recorder System with built-in GPS Module

Model: MDVR-XD

The X-Driven is an aesthetically-designed in-car 'Black Box' recorder, developed to help give individual drivers, and larger commuter and transport fleets, added safety, security and peace of mind. It is a high-resolution video camera with in-built microphone, GPS location data logger and G-Force shock sensor. It has been developed to easily attach to the windshield of a motor vehicle. The camera has a wide angle fisheye (150° Horizontal) lens, allowing for optimum visibility across the frontal sides of the vehicle for maximum coverage in case of an unexpected accident. The in-built adjustable shock sensor assists the unit in determining whether the vehicle has been involved in an accident; the pre and post event recording footage is taken to provide thorough coverage of the incident, making it easy for employers or individuals to lodge insurance claims or provide evidence.



Main Product Features

- **Imaging Sensor:**
The 1.3 Mega-Pixel CMOS Image Sensor produces high quality images allowing clear identification of the number plate of another motor vehicle in front, up to a full car length, along with all general road signs ahead. The recording resolutions can be adjusted from 320 x 240 (Up to 30FPS) to 640 x 480 (Up to 30FPS) to 1280 x 960 (Up to 5FPS) depending on the user's requirements.
- **Accident Image Storage:**
When an accident occurs, the unit automatically detects the impact through the G-Force shock sensor and records and saves images before and after the incident.
- **Location Information Storage:**
The device records and stores detailed GPS information including the location, time & date, and speed of the accident or event.
- **Recording:**
Single Mode: Recording by shock sensor & emergency button only
Multi-Mode: Auto recording when power on and shock sensor
- **GPS Data:**
The in-built GPS Module stores the location, speed, direction and all relevant GPS co-ordinates, simultaneously combining the collected data with the captured video, recorded audio and G-Force measurements to produce segmented files stored on the compact SD Card.
- **Manual Image Storage:**
Even without physical impact to a vehicle from an accident, the device will record and save images when the driver manually activates the Emergency button.
- **Vehicle Operation Information Storage:**
The device records and stores certain vehicle motions including sudden acceleration, braking and sharp cornering, as well as back and forth, left and right, up and down vibrations.
- **Accident Data Replay:**
When replaying the accident data on a PC, the software also simultaneously plays the GPS information and vehicle operation information.



The unit is provided with a 2GB SD Memory card, to not only enable you to begin recording straight out of the box, but to also allow you to install the Footage Viewing Software on your PC. The software is easy to use and very intuitive, allowing you to adjust the various camera settings (such as recording resolution and sensitivity of the shock sensor) to ensure that the system meets your individual requirements.

User Friendly Software and GUI:

- Easy to install viewing software allows you to browse and preview the recorded files
- G-Force Shock Sensor Graph shows the degree of impact in three directions (X, Y, Z)
- Integration with Google Maps™* displays accurate location of vehicle during events, as well as associated GPS data (location, direction, speed)

Footage Viewing Software

Video Footage Viewer:

A selected file is played back. GPS data such as date and time is overlaid on the footage

Currently Playing File Information:

The file log displays both the resolution of the recorded footage and the event which triggered recording (ie: Shock)



G-Force Shock Sensor Graph:

Displays the degree of impacts in the X, Y, Z axes. The blue slider bar below the graph indicates recorded footage before the impact, the red slider bar indicates footage after the impact.

Google Maps™:

The GPS data is represented with a Google Map™, showing location and direction of the vehicle. *Note* Internet connection required to connect to Google Maps™

Camera:	1.3MP CMOS Digital Image Sensor	Data Storage:	SD Memory Card, Max. capacity 16GB)
Recording Resolution:	320 x 240/640 x 480 (Max. 30FPS), 1280 x 960 (Max. 5FPS)	Audio:	Internal Microphone (On/Off via Software)
Lens:	Fisheye D-Mount Lens, 150° Viewing Angle	Emergency:	Emergency Button for Manual Activation
GPS:	Internal(SiRF III) Module	Dimensions/Weight:	130(H) x 50(W) x 16(D)mm / 110g
G-Force Sensor:	Internal 3D G-Force Sensor, 3 Axis (X,Y,Z)	Power/Consumption:	DC12V~24V/ 2 Watts

* Google Earth is the trademark of Google Inc. The download and use are subject to applicable terms and conditions of Google Inc. Rhinoco Technology is in no way affiliated or associated with Google Inc. or any of its subsidiaries.



MDVR-TAXI

Vehicle and Driver In-Car Recorder System with inbuilt GPS Module

Model: MDVR-TAXI

The MDVR-TAXI provides an ideal video surveillance solution for recording driver/passenger behaviour as well as monitoring the driver's general road view. The next stage of in-car GPS video recording systems. The system utilises two video cameras with audio recording, providing you with accurate video evidence in the event of a driver/passenger incident or accident.

The unit includes a bracket to mount the unit to the windshield of the vehicle, out of the driver's field of view. The built-in GPS module provides not only the location of the vehicle, but also the time of the event and the speed of the vehicle. This makes the product ideal not only for assisting in monitoring road emergencies, but for other applications such as tracking that deliveries are being made and that drivers are performing in a safe manner.

The two internal 1/4" CMOS cameras capture clear images when the car is driving or stationary (when power is supplied). Simply remove the SD memory card from the unit and connect to your Windows™ PC for viewing using the Smart Viewer Software.

Main Product Features

- **Dual Cameras:**
 Unlike other in-car recorders which may only monitor the road, the MDVR-TAXI utilises two CMOS cameras to monitor both the front and the inside of the vehicle, whilst the simultaneous high quality Audio Recording ensures that you get the most accurate footage of any events which may occur. The dual cameras allow you to gain accurate evidence in the event that the car is in an accident, but also allow you to monitor whether drivers are acting in a safe manner.
- **Image Recording:**
 When an accident occurs, the unit will automatically detect the impact through the Triaxial G-Force shock sensor and begins recording. Each recording session lasts for 20 seconds (10pre-event, 10 post event).
- **Event Information Storage:**
 All recorded footage can be backed up from the device onto an SD memory card (maximum capacity 32GB) to enable viewing of the footage through the PC Smart Viewer.
- **GPS Data:**
 The in-built GPS Module monitors and records the vehicle location, speed and time of any events which may occur. The recorded GPS Data is overlain on the footage when viewed in the Smart Viewer, providing you with all the necessary information every time you access the footage.
- **Image Quality:**
 Each of the CMOS cameras records at 15FPS at a resolution of 640 x 480 (VGA), allowing it to provide the best images when playing or searching footage.
- **Smart Viewer Software:**
 The Smart Viewer PC Software allows you to review all recorded footage. The software has a user accessible interface and multiple intelligent functions which assist you in finding the footage you require. These functions include Zooming, Searching, Printing, Data Backup, Security, Management, Frame by Frame searching in detail and GPS data overlay to show vehicle location and direction during the footage.



Vehicle and Driver In-Car Recorder System with inbuilt GPS Module



Internal Driver View



Forward Facing View

Cameras:	1/4" CMOS Digital Image Sensor	Data Storage:	SD Memory Card, Max. capacity 32GB)
Recording Resolution:	640 x 480 (VGA). Each camera operates at 15FPS	Audio:	16 Bit PCM (8 Kbps)
Lens Angle:	120° (Front), 170° (Indoor)	Emergency:	Emergency Button for Manual Activation
GPS Module:	Internal(SIRF III) Chipset	Dimensions/Weight:	100(W) x 60(W) x 30(D)mm / 100g
G-Force Sensor:	Triaxial Digital Acceleration Sensor	Power/Consumption:	DC12V~24V Input/ 5V Output
Smart Viewer Functions:	Zoom, Search, Print, Data Backup, Security, Management	Recording Time:	20 Seconds (10 Secs Pre-Event, 10 Secs Post-Event)

SmartViewer Software

Front Camera Display:

Displays the footage recorded by the front camera

Google Maps™*:

Displays the GPS data from the footage on a Google Map™

*Note: Internet Connection required to access maps

Indoor Camera Display:

Displays the footage recorded by the internal camera

Data Display:

Displays the associated data, including speed and impacts.

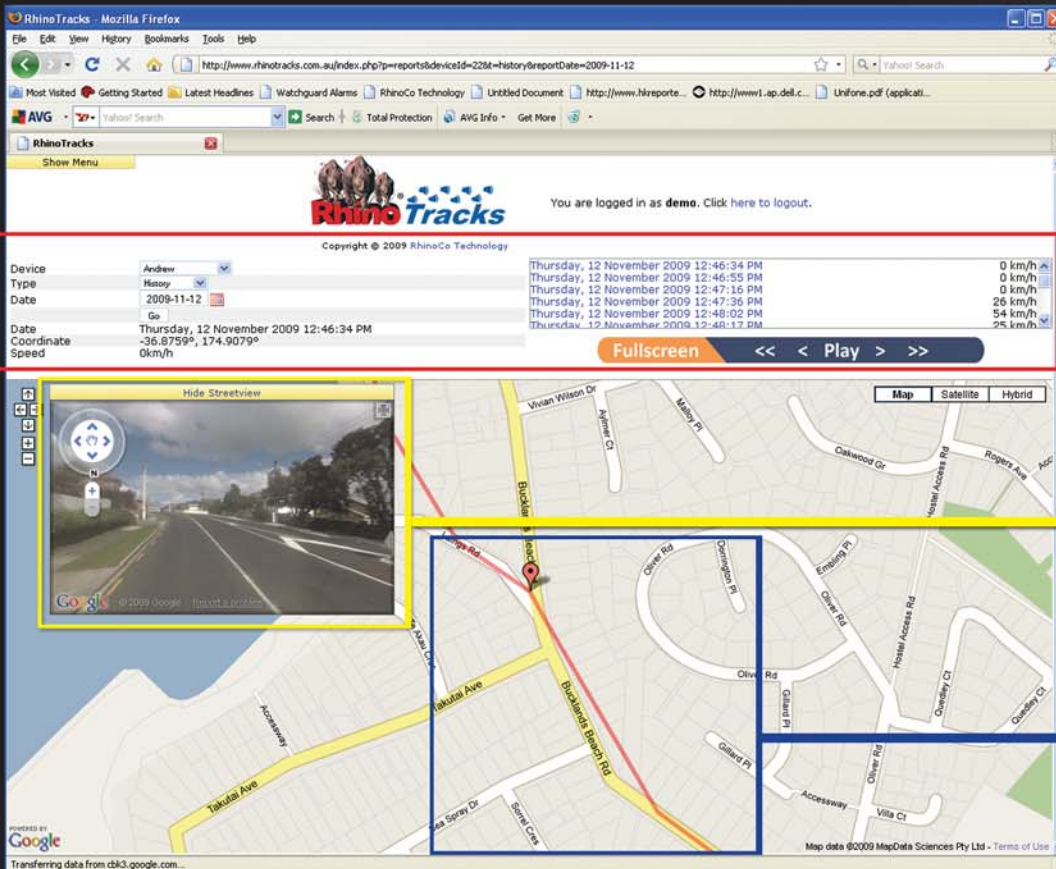
The red/blue slider bar shows the pre-recorded & post-recorded footage



Have You Ever Needed To Know Where Your Vehicle Is Right Now Or Where It Has Been?

With RhinoTracks™ you can affordably locate & track your own vehicle to within 20 metres*, in virtually real-time, from anywhere in the world where you have access to the Internet. Unlike most other retail tracking products, the RhinoTracks™ service allows you to track your own vehicle at any time and find out where it is and where it has been. A major advantage for fleet management applications is that no expensive hardware or software is required.

Access to the RhinoTracks™ service is based on a low-cost monthly subscription service which is paid quarterly. RhinoTracks™ subscription plans include access to the RhinoTracks™ website and your SIM data plan. Please contact your RhinoCo Distributor for pricing and service terms.



After logging into the Rhino Tracks website, you can select "View Live" or "History" to check on your vehicle. Currently, we are at "History" mode.

Google™ Maps** displays the "Streetview" of the vehicle's "current position" at the recorded time frame. "Streetview" can also be viewed full screen.

Using Google™ Maps, the data shows the vehicle's routine, position, location, speed, date and time frame.

The basic functions featured in all the GPS trackers include:

- Support for numerous GPS applications such as vehicle location, remote monitoring, remote navigation, fleet management, anti-theft and real-time tracking
- Provides accident and travel history records
- Convenient, flexible, temporary Geofence setting

* Provided your vehicle is within your selected mobile phone network carriers GSM coverage, GPS satellites are operational & the vehicle is not undercover.

** Google Earth is the trademark of Google Inc. The download and use are subject to applicable terms and conditions of Google Inc. Rhinoco Technology is in no way affiliated or associated with Google Inc. or any of its subsidiaries.

**RHINOTRACKS-ST5**

Standard GPS Vehicle Tracker

Model: RHINOTRACKS-ST5

The RHINOTRACKS-ST5 is our standard GPS Vehicle Tracker, designed to keep you informed of where your vehicle is and where it has been. The system includes the standard GPS tracking functions, and comes with a GPRS and GPS antenna.

*Suitable for 12 or 24 VDC Vehicles

**RHINOTRACKS-PTS**

Personal GPS Tracking System with Voice Function

Model: RHINOTRACKS-PTS

The RHINOTRACKS-PTS personal tracking system includes the standard GPS tracking functions as well as voice functionality. The unit has a built-in microphone and speaker, with the ability to program phone numbers onto the speed dial buttons (via the computer software) for more efficient communication. More advanced functions on the unit include Help and SOS report sending, as well as a Self-Geofence option. The unit is charged through a portable docking station, and a full battery will provide more than 4 days standby operation.

By Special Order

**RHINOTRACKS-CTS**

Mini Tracker for Container or Covert Tracking

Model: RHINOTRACKS-CTS

This compact GPS unit includes the standard GPS tracking functions and is powered by an inbuilt 3.6V Lithium battery, with a standby operation time of more than 12 days. The system has been designed to be mounted on the back doors of a truck or container. It has built-in GPS and GSM antennas and has both a motion sensor and magnetic door sensor, to easily detect the status of the container doors. The unit housing has a strong magnetic backing, which makes for simple installation and it includes a tamper switch (with trigger reporting) on the main unit for added protection against vandals.

**RHINOTRACKS-WPT**

Wind Powered Tracking System with Built-in GPS and GSM Antenna for Trucks, Trains and Trailers

Model: RHINOTRACKS-WPT

This unique wind powered GPS tracking system utilises an independent wind power generator to charge and power the unit, removing the need to connect an external power supply. This makes the product ideal for mounting on the top of a trailer, truck or container, where it is out of sight from vandals and in a prominent position to capture the wind.

**RHINOTRACKS-SPT**

Stand Alone GPS/GPRS/SMS Solar Panel Tracker

Model: RHINOTRACKS-SPT

The NEW Solar Powered GPS Tracking System is an ideal product for use in logistics applications such as on top of a truck or container. The internal battery is charged by the large photovoltaic Solar Panel, removing the need for an external power source. The unit includes the basic GPS tracking functions, allowing you to locate your vehicle from anywhere in the world where you have an internet connection. The built-in GPS and GSM antenna remove the need for external devices, and the unit's tamper switch (with trigger reporting) provides added protection against vandals.

Watch Out For Unseen Obstacles!

Help see what's behind you in your blind spots when reversing



VSMT-RVM

Digital Vehicle Reversing Mirror With In-Built 4" Colour LCD Screen

Model: VSMT-RVM

This attractive accessory fastens over your vehicle's existing rear view mirror. When reverse gear is selected, a wide angle colour video image is instantly displayed on the in-built 4" LCD screen. Enables safe reversing with confidence, virtually eliminating blind spots. Functions as a regular mirror when not reversing.

- Video Display Turns On Automatically While Reversing
- Inbuilt 4" Colour TFT-LCD Screen with Speakers & Volume Control
- Monitor Resolution: 480x 234 Pixels
- Anti-Glare Blue Glass Mirror
- Secondary AV Input for Connection to DVD/GPS (Only Active When Vehicle Hand Brake Is Applied)
- Integrated Mirror Image Display (Selectable Via AV Input Module)
- Power: 12VDC
- Mirror Dimension: 270(W) x 20(D) x 95(H) mm



VSMT-BUMPCAM

Flush Mount Bumper-fit Reversing Camera With Infrared LEDs

Model: VSMT-BUMPCAM

Flush mount camera designed for mounting directly in the centre of your rear bumper bar. Infrared LEDs offer enhanced night time operation

- 110° Horizontal Viewing Angle
- Dimensions: 65 (L) x 25 (Ø) mm



VSMT-MINICAM

Ultra Small Wing Mount Reversing Camera

Model: VSMT-MINICAM

Ultra compact camera for mounting inside/outside the vehicle - such as above your number plate

- 130° Horizontal Viewing Angle
- Dimensions: 24 (L) x 19 (Ø) mm



VSMT-TRUCKCAM

Truck Reversing Camera with Infrared LEDs & Microphone

Model: VSMT-TRUCKCAM

Suitable for mounting inside rear windscreen (EG.4WD) or externally on a truck or van body. Infrared LEDs offer enhanced night time operation.

- 150° Horizontal Viewing Angle
- Dimensions: 104(D) x 62(W) x 62(H) mm



VSDS-BUMPCAM

Flush Mounted Bumper Camera with Infrared LEDs

Model: VSDS-BUMPCAM

This reversing camera simply mounts directly into your vehicle's rear bumper and once connected to one of Rhino's In-Vehicle LCD Monitors will display a clear colour image.

- 10 x IR LEDs for enhanced night time operation
- 90° Horizontal Viewing Angle
- Power: 12VDC

**VSDSRVM-4.3**

Rearview Mirror with 4.3" TFT-LCD Inbuilt Monitor and Number Plate Camera Kit

Model: VSDS-RVM4.3

This kit contains all you need to enable safe reversing with confidence, virtually eliminating blind spots. The monitor/mirror simply fastens over your vehicle's existing rear view mirror, and the camera is mounted above your number plate. When reverse gear is selected, a colour video image is instantly displayed on the in-built 4.3" TFT-LCD screen.

- Video Display Turns On Automatically While Reversing
- Inbuilt 4" Colour TFT-LCD Screen
- Monitor Resolution: 480x 234 Pixels
- Anti-Glare Blue Glass Mirror
- The camera has 8 x IR LEDs for enhanced night time operation
- The camera has a 110° horizontal viewing angle
- Compatible with Rhino's Full Range of Vehicle Reversing Cameras
- Mirror Dimension: 270(W) x 20(D) x 95(H) mm

**LCD7**

7- Inch Monitor With Remote Control

Model: LCD7

This 7" LCD monitor is primarily designed to be used in automotive applications. It can be connected to a reversing camera to display the camera image automatically when reverse gear is selected. The monitor has two video inputs, making it suitable for use in other applications such as in-car DVD players.

- Aspect ratio: 16:9
- Resolution: 234 x 480pixels
- Dual video inputs (Video1 & Video2)
- Multi-purpose LCD monitor for VCD/DVD/TV/GPS

**REVERSE4B**

4 Channel Car Reversing Sensor Kit with 'Audible Alert'

Model: REVERSE4B

This device is designed to aid drivers by detecting physical objects when reversing or parking. When reversing, the advanced ultrasonic sensors will detect obstacles within 1.5 metres from the rear of your vehicle. The distance between the rear bumper of the vehicle and any obstacle is indicated with escalating audible warning tones and via the visual display. The visual display indicates both the distance and direction of the obstacle in relation to the rear of the car (i.e- left or right).

- 4 x 40KHz Ultrasonic Sensors
- Detection Distance: 0.2~1.5 Metres
- Digital Control Box
- Speaker for audible alert
- Operating Voltage: DC 12V



WARNING:

Both reversing cameras and parking sensors are designed only as an aid to drivers. They should never be considered as a substitute for normal driver responsibility. Proper driving technique and use of mirrors whilst reversing should always be observed by the driver.

Watchguard™ SMS 2010

WIRELESS BURGLAR ALARM SYSTEM WITH SMS TEXT ALERTS DIRECT TO YOUR MOBILE PHONE*
IDEAL FOR HOME, BUSINESS, MARINE OR CARAVAN!



Receive SMS Alerts from your alarm!



- Powerful Wireless Technology
- No phone line required
- No monitoring subscriptions
- Break-in and duress text alerts direct to your mobile
- Easy DIY installation in less than 1 hour
- *Requires a mobile phone SIM card (not included)

Wireless Alarm System with 2-Way Communication Via SMS Messaging

Model: WGSMS2010

A true revolution in self-monitored security alarm systems, the WGSMS2010 has been designed specifically to provide simple installation and maximum protection at an affordable price. The Watchguard™SMS 2010 can be used across a range of applications including homes, caravans, boats, building sites etc. or anywhere where a portable, self-monitored alarm is required. It is a sophisticated system, utilising the latest in GSM communication and wireless alarm technology. The Watchguard™SMS 2010 communicates to your mobile via a GSM mobile phone network. Inserting a SIM Card enables 2-way communication via SMS text messaging between you and your alarm.

*A suitable GSM SIM Card is required for the SMS functionality of this product (not included). The in-built high quality Quad Band GSM Modem (850, 900, 1800, 1900 MHz) supports use worldwide.

Standard Package Includes:

- 1 x 8 Zone Alarm Controller Unit with Built-in GSM Modem
- 2 x Wireless PIR Movement Sensors
- 2 x Code Hopping Remote Controls
- 1 x 12V DC Power Supply for the Alarm Controller Unit
- 1 x Compact External Siren with Strobe & 10m Cable



WGSMS2010

How The System Works:

<p>1</p>  <p>Plug & Play Setup</p> <p>After mounting the siren and movement detectors in the areas to be monitored, simply insert your SIM, then connect power via the included AC power pack (or connect 12VDC), turn the power key to 'on' and you're ready to go! You now program who is to receive the SMS alerts from your own mobile phone by sending an SMS to the main unit.</p>	<p>2</p>  <p>Arm the Premises</p> <p>Use your Remote Control to arm the System to secure your premises. You can also arm or disarm from your mobile phone - which is ideal if you ever forget to arm or need to let someone enter in your absence.</p> <p>When body heat movement is detected in the premises, the sensors will send a coded radio message to the alarm module.</p>	<p>3</p>  <p>8 Zone Alarm Module with Built in GSM Modem</p> <p>This is the 'brain' of the system. When it receives the message from the Wireless Movement Sensors, it automatically sends your reported alarm to your nominated mobile/s as an SMS. The internal siren will also sound, helping repel the intruder. The external siren will sound and the strobe will flash for 5 minutes.</p>	<p>4</p>  <p>Alarm Notification</p> <p>The Watchguard SMS alarm module communicates to your mobile phone via a GSM mobile network. When triggered, the module sends a detailed SMS of the reported alarm to your mobile/s. A voice message may also be sent to a landline telephone, where supported. Up to 5 people can be notified.</p>
--	---	--	--

OPTIONAL ACCESSORIES

Your Watchguard™SMS2010 Wireless Alarm System can be upgraded to function as a smoke alarm as well as a wireless panic button or medical alarm. You can utilise up to 8 individual alarm sensing devices and up to 7 remote controls in total.

Retail Ready Packaging



Wireless Outdoor Siren

Model: WSIREN

Incorporates a powerful siren and flashing blue strobe. Utilises a low voltage power pack with 10m cable.



Wireless Solar Siren

Model: WSSOL

NO cable required. In-built solar panel charges internal battery. Features powerful 105dB/M siren & blue strobe light.



Wireless Smoke Detector

Model: SMODETW

Gas Ionisation Technology. In-built siren and low battery warning. 9V DC.



Additional Remote Control

Model: GTTX

Allows you to easily Arm / Disarm the system from anywhere in your home without having to remember a PIN Number.



Full Size Wireless Keypad

Model: WKPL

Allows you to Arm / Disarm the system using your chosen PIN Number. Backlit buttons and low battery warning.



Hard Wired External Siren

Model: COS

Incorporates a powerful siren & flashing blue strobe. Supplied complete with 20m inter-connection cable for easy installation.



Wireless Outdoor PIR Sensor

Model: PIROWD

High quality outdoor PIR sensor. 4 selectable coverage patterns (wide angle 10m, curtain 10m, long range 20m & vertical curtain 3m).



Additional Wireless PIR Sensor

Model: PIROW3

Designed to detect the body movement of an intruder inside your premises. 12m detection range. Up to 3 year battery life.



Wireless Emergency Panic Button

Model: WPANIC

Wireless "Panic" Button designed for use in medical or duress situations.



Wireless Reed Switch

Model: WREEDI

Designed to sense the opening of a door or window using magnetic reed switch technology. Also features universal transmitter terminals.



CLKHD

Heavy Duty 4 Door Central Locking Kit

Models: CLKHD (4 Door), CLKHD2D (2 Door), CLKHD24 (2 Door 24v)

Add security and convenience to your car which is not already fitted with central locking. This heavy duty central locking kit can be key operated or connected to any car alarm or immobiliser with central locking outputs for remote keyless entry.

This high quality door central locking kit is ideal for use in both modern and older vehicles which require high torque motors for activating stiff door locking mechanisms. This product is available in 2-Door, 4-Door and 24V Versions

Kit Includes:

- 1 x Control Module With Negative Lock / Unlock Pulse Inputs
- 2 x 5 Wire Master Actuator / Door Lock Motors
- 2 x 2 Wire Slave Actuator / Door Lock Motors
- Full Wiring Harness & Motor Mounting Hardware

Compared to regular "Gun Style" central locking kits, this product has:

- Higher quality manufacture
- Superior torque
- Longer service life
- Easier installation



CLKHDCABLE

Central Locking Kit - Cable Lock Adapter

Model: CLKHDCABLE

Use this adapter kit for vehicles fitted with cable type lock actuators.



DLHD101

Heavy Duty 5 Wire Central Locking Motor

Model: DLHD101

Individual Central Locking 5-Wire Drive Motor.



DLHD102

Heavy Duty 2-Wire Central Locking Slave Motor

Model: DLHD102

Heavy Duty 2-Wire Central Locking Slave Motor.

**DPS**

Cabin Piezo Siren

Model: DPS

Repel an intruder from the cabin of your vehicle by installing this high frequency, super loud siren under the dash.

- Connect To The "Negative On Alarm" Output On Your Alarm System
- Dimensions: 85(W) x 89(D) x 41(H) mm

**BBSC**

Coded Backup Battery Siren

Model: BBSC

For use with Rhino RA & JAG only as these systems utilise a special data code signal to switch the siren on and off.

- Power: 12VDC
- All Black Wiring
- Australian Standards Approved
- Dimensions: 105(W) x 11(D) x 80(H) mm

**MINISBB**

Mini Back Up Battery Siren

Model: MINISBB

Universal replacement siren for most brands of car alarm. Used in Rhino GTR & RSA Car Alarms.

- Power: 12VDC
- Used in Rhino GTR & RSA Car Alarm
- Negative & Positive Trigger Inputs
- Override Keyswitch
- Dimensions: 55(W) x 65(D) x 72(H) mm

**SBB**

Siren Battery Backup

Model: SBB

Universal replacement siren for most brands of car alarm. Used in Rhino GTS Car Alarm.

- Colour Wiring Harness
- Negative & Positive Trigger Inputs
- Override Keyswitch
- Dimensions: 105(W) x 11(D) x 80(H) mm

**UD5**

Microwave Detector

Model: UD5

For detecting body movement inside the cabin of a soft-top / convertible vehicle. Can be hidden behind non-metallic surfaces.

- Compact Design
- Dual Colour Test LED
- Negative Trigger Output Wire
- Adjustable Sensitivity
- Dimensions: 83(W) x 80(D) x 20(H) mm

**UD6**

Ultrasonic Sensors

Model: UD6

For detecting body movement inside the cabin of a hardtop vehicle. Easy to connect to most alarms via negative output trigger wire.

- Ultra Compact Sensors
- Frequency: 40 Khz Crystal Locked
- Adjustable Sensitivity
- 12V DC

**TILTSENSE2**

Digital Tilt Sensor

Model: TILTSENSE2

Designed to help protect your wheels / detect tow away. This device detects if your car is tilted by more than a couple of degrees. Unlike mercury switches, it does not matter if your car is parked on a slope. The sensor saves in memory the angle position of your car when your alarm is armed & monitors for any changes.

- 3 Dimensional Movement Sensing Technologies (XYZ Axis)
- Digital Signal Processing (DSP)
- Microprocessor To Instantly & Continually Analyse All Pitch Changes
- Dimensions: 40(W) x 47(D) x 10(H) mm

**MDDZ**

Dual Zone Microwave Detector

Model: MDDZ

Can be used to give a warning to anyone coming too close to your vehicle & to trigger the alarm if there is movement inside the cabin. Can be hidden behind non-metallic surfaces.

- Compatible With Most Alarms
- Tri- Colour Test LED
- Negative Trigger Output Wires
- Detects Perimeter Approach & Internal Movement
- Dimensions: 83(W) x 80(D) x 20(H) mm



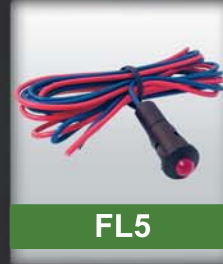
Automatic Electric Window Lifter

Model: **GLU400**

Automatically closes 2 power windows when your alarm is armed (2 units required for a 4 door vehicle).

- Dimensions: 70(W) x 115(D) x 27(H) mm

GLU400



5mm Flashing LED Light

Model: **FL5**

Ultra bright flush-mount red flashing LED light for "alarm armed" indication.

- 12V DC
- Diameter : 5 mm

FL5



Electric Boot Release Motor

Model: **DL105**

Add convenience to your car that is not fitted with an electric (push button) type boot / hatch release.

- Solenoid Dimensions: 70(W) x 115(D) x 27(H) mm

DL105



Standard Right Angle Pinswitch

Model: **PIN409**

Used to detect the opening of a vehicle bonnet, boot or doors.

- Cut To Adjust
- Dimensions: 35(W) x 53(L) mm

PIN409



Van Sliding Door Switch

Model: **VANSW**

For use when installing central locking on vehicles with sliding doors such as passenger & commercial vans.

- Female Switch Dimensions: 82(W) x 34(D) x 15(H) mm
- Male Switch Dimensions: 70(W) x 26(D) x 52(H) mm

VANSW



40 Amp Changeover Relay

Model: **40ARELAY**

Commonly used for adding engine immobilisation circuits and connecting electric boot release motors to your system. Also used for central locking interfacing when vehicle does not have regular negative pulse inputs and your alarm / immobiliser also does not already have onboard central locking relays.

- Available in 12V and 24V Versions
- Dimensions: 22(W) x 41(D) x 27(H) mm

40ARELAY



Right Angle Pinswitch

Model: **PIN410**

Used to detect the opening of a vehicle bonnet, boot or doors.

- Cut To Adjust
- Dimensions: 45(W) x 60(L) mm

PIN410



Metal Pin Switch

Model: **PINSW**

Used to detect the opening of a vehicle bonnet, boot or doors.

- Adjust via Screw Thread
- Dimensions: 5(W) x 65(L) mm

PINSW



2 Stage Vehicle Impact Sensor

Model: **SHOCK2S**

Designed to detect any shocks or impacts to your vehicle. The 2 stage system provides a warning alert if a light impact is detected, and outputs to the alarm if a heavy impact is registered.

- 2 Stage for more accurate detection
- Pre-wired female plug
- Adjustable sensitivity with LED test indicator

SHOCK2S



Differential Pressure Sensor

Model: **PRESSENSE**

The differential pressure sensor detects minute or major changes in the internal pressure of a car; when the alarm is armed, the sensor uses the internal pressure as a baseline. Any changes to this pressure - like breaking a window or prying open a door - result in the sensor detecting the change and triggering the alarm.

- Unit has Low and High frequency tuners

PRESSENSE



GTTX



GTSTX



GTRTX

2 Button Code Hopping Remotes

Model: GTTX / GTSTX / GTRTX

- **Yellow LED GTTX:**
For Rhino RCX & RES Immobilisers, WGSMS2010
- **Red LED GTSTX:**
For Rhino GTS Car Alarm
- **Green LED GTRTX:**
For Rhino GTR Car Alarm



GLTX

Single Button Fixed Code Remote

Model: GLTX

- Fixed Code Technology
- For Rhino LS & GA Car Alarm



RAV3TX

4 Button Code Hopping Remote

Model: RAV3TX

- As supplied With Rhino RAV3 Car Alarm
- Also Compatible with Rhino RCX, RES & WGSMS2010



RCTX3-T

3 Button Code Hopping Remote with LED Torch Function

Model: RCTX3-T

- 3 Button Remote With LED Torch
- As supplied With Rhino JAG, RAV3 & RAMV2 Car Alarm
- Also Compatible with Rhino RCX, RES & WGSMS2010



RCTX4-U

4 Button Code Hopping Remote

Model: RCTX4-U

- As supplied with Rhino RXPROR4. Optional use with Rhino RCX, RES, JAG, RAMV2 & WGSMS2010
- Colour coded buttons with printed numbers to match GTTX / RCTX3-T (i.e button 1 on your RCTX4-U is the same function as button 1 on your) GTTX remote.

Need a replacement remote control for your old car alarm ?

See full video demonstration on www.rhinoco.com.au/product/ptx/

Universal UHF 4-Button Learning Remote

Model: PTX

The Rhino PTX Remote Control can duplicate a majority of fixed code remote controls (not code hopping remotes). Fixed code means that each time the remote control is pressed, the same code is transmitted each time. The PTX remote has four buttons so that it will universally suit most alarms i.e. some remotes have just one button for arming / disarming, where others may have separate buttons for multiple functions. The same code can be copied onto multiple buttons if desired. If your original remote has a function controlled by pressing multiple buttons together, you must duplicate that code to a single button on your Rhino PTX.

- 4 Channel Programmable Remote Control
- Many Uses Including Car Alarms, Home Alarms, Panic Buttons, Garage Doors...
- Copies Most Radio Frequency Fixed Code Remote Controls
- Learns in Seconds
- 255-500 MHz Adjustable Frequency
- Battery Included



PTX



Electric Gates



Home Alarms



Car Alarms



Garage Gate

Watchguard™ SMS 2010

WIRELESS BURGLAR ALARM SYSTEM WITH SMS TEXT ALERTS DIRECT TO YOUR MOBILE PHONE*

IDEAL FOR HOME, BUSINESS, MARINE OR CARAVAN!



Receive SMS Alerts from your alarm!



NEW! See page 22 for more details



- Powerful Wireless Technology
- No phone line required
- No monitoring subscriptions
- Break-in and duress text alerts direct to your mobile
- Easy DIY installation in less than 1 hour
- *Requires a mobile phone SIM card (not included)

Your Local Dealer :


RhinoCo
TECHNOLOGY
www.rhino.com.au