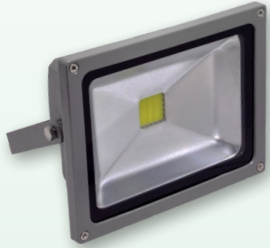
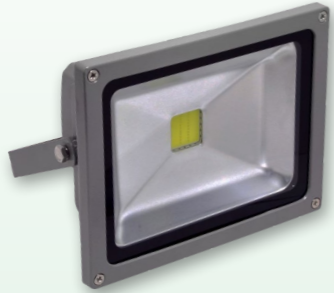


LED FLOOD LIGHTING

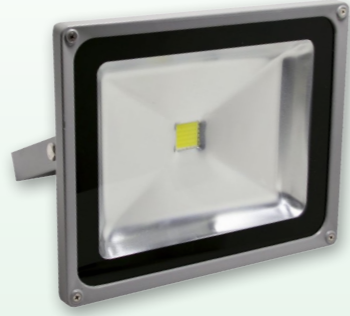
Some Colour Temperatures may only be available by special request.



20W LED Flood Light
LEDFL20W Series
• 1800lm Light Output
• 120° Beam Angle
• IP 65 Rating
• In Soft & Cool White
• 85-265V AC (50-60Hz)
• 180 x 140 x 135mm
4500K **6500K**



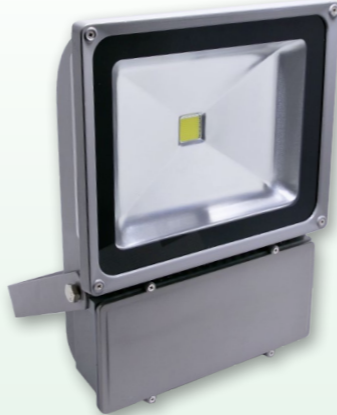
30W LED Flood Light
LEDFL30W Series
• 2700lm Light Output
• 120° Beam Angle
• IP 65 Rating
• In Soft & Cool White
• 85-265V AC (50-60Hz)
• 224 x 185 x 160mm
4500K **6500K**



50W LED Flood Light
LEDFL50W Series
• 4500lm Light Output
• 120° Beam Angle
• IP 65 Rating
• In Soft & Cool White
• 85-265V AC (50-60Hz)
• 285 x 234 x 170mm
4500K **6500K**



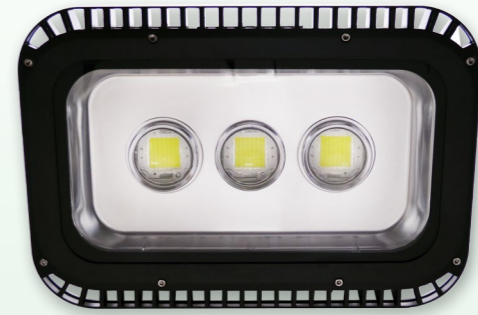
70W LED Flood Light
LEDFL70W Series
• 6300lm Light Output
• 120° Beam Angle
• IP 65 Rating
• In Soft & Cool White
• 85-265V AC (50-60Hz)
• 285 x 360 x 183mm
4500K **6500K**



100W LED Flood Light
LEDFL100W Series
• 9000lm Light Output
• 120° Beam Angle
• IP 65 Rating
• In Soft & Cool White
• 85-265V AC (50-60Hz)
• 290 x 360 x 260mm
4500K **6500K**



150W LED Flood Light
LEDFL150W Series
• 13500lm Light Output
• 120° Beam Angle
• IP 65 Rating
• In Soft & Cool White
• 85-265V AC (50-60Hz)
• 380 x 280 x 260mm
4500K **6500K**



180W/210W LED Flood Light
LEDFL180W/210W Series
• 16200/18900lm Light Output
• 120° Beam Angle
• IP 65 Rating
• In Soft & Cool White
• 85-265V AC (50-60Hz)
• 450 x 310 x 200mm
4500K **6500K**



Vandal Resistant 100W LED Flood Light
LEDFL100W
• 8500lm Light Output
• 90° Beam Angle / IP65
• In Soft White
• 85-265V AC (50-60Hz)
• 320 x 320 x 185mm
4500K

LED HIGH BAY LIGHTING

150W LED High Bay Light
LEDHB150W
• 11500 Lumens Light Output
• Efficient Aluminium Heatsink
• Available in Pure White
• Mounting Hook Included
• IP54 Rating
• Recommended for Assembly Lines, Display Lighting, General Lighting

Digital Dimming Available on Special Request

4500K

Available Reflectors by Beam Angle



Shown with 120° Reflector



200W LED High Bay Light
LEDHB200W
• 16000 Lumens Light Output
• Efficient Aluminium Heatsink
• Available in Pure White
• Mounting Hook Included
• IP54 Rating
• Recommended for Retail Spaces, Halls, Warehouses, Indoor Sports

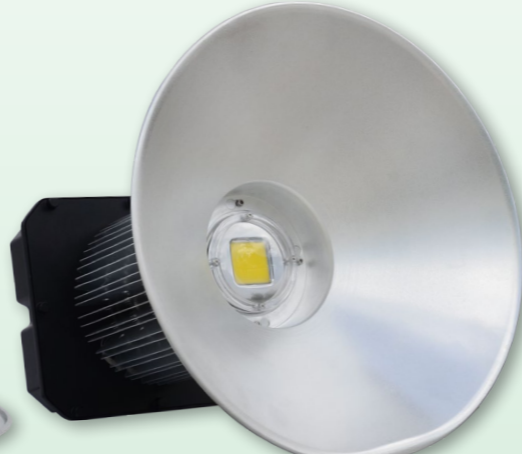
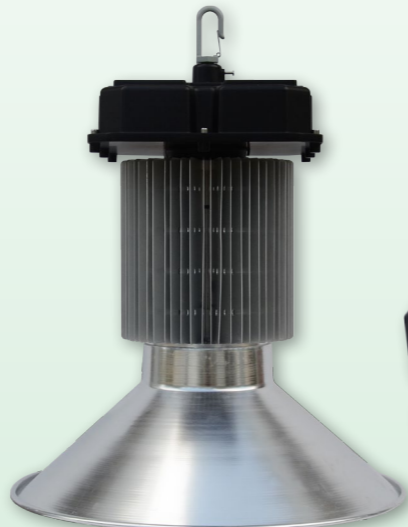
Digital Dimming Available on Special Request

4500K

Available Reflectors by Beam Angle



Shown with 90° Reflector



300W LED High Bay Light
LEDHB300W
• 26000 Lumens Light Output
• Efficient Aluminium Heatsink
• Available in Pure White
• Mounting Hook Included
• IP54 Rating
• Recommended for Factories, Large Retail Spaces, Manufacturing

Digital Dimming Available on Special Request

4500K

Available Reflectors by Beam Angle



Shown with 45° Reflector



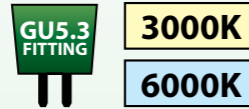
MR16 LED DOWNLIGHTS

4W RANGE



4W LED Downlight GU5.3 Fitting

- 320 Lumens Light Output
- 45° Beam Angle
- 12V AC/DC Input Voltage
- Available in Cool and Warm White

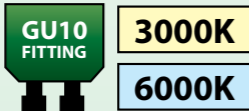


Model Numbers
LEDGL4WMR3K45D (3000K / 320lm)
LEDGL4WMR6K45D (6000K / 320lm)



4W LED Downlight GU10 Fitting

- 320 Lumens Light Output
- 45° Beam Angle
- 240V AC 50Hz Input Voltage
- Available in Cool and Warm White



Model Numbers
LEDGL4WGU3K45D (3000K / 320lm)
LEDGL4WGU6K45D (6000K / 320lm)

7W RANGE



7W LED Downlight GU5.3 Fitting

- 500-550 Lumens Light Output
- 40° Beam Angle
- 12V AC/DC Input Voltage
- Dimmable
- Available in Cool and Warm White

Model Numbers
LEDGL7WMR3K40D (3000K / 500lm)
LEDGL7WMR5K40D (5500K / 550lm)

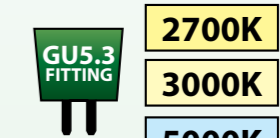


9W RANGE



9W LED Downlight GU5.3 Fitting

- 450-550 Lumens Light Output
- 60° Beam Angle
- 12V AC/DC Input Voltage
- Available in Cool and Warm Whites

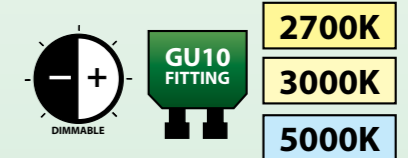


Model Numbers
LEDGL9WMR27K60D (2700K / 450lm)
LEDGL9WMR3K60D (3000K / 500lm)
LEDGL9WMR5K60D (5000K / 550lm)



9W LED Downlight GU10 Fitting

- 450-500 Lumens Light Output
- 60° Beam Angle
- 200-240V AC Input Voltage
- Dimmable
- Available in Cool and Warm Whites



Model Numbers
LEDGL9WGU27K60D (2700K / 450lm)
LEDGL9WGU3K60D (3000K / 450lm)
LEDGL9WGU5K60D (5000K / 500lm)

LED DOWNLIGHT ACCESSORIES



Mounting Kit for GU5.3 Downlights LEDMRKIT

- White Gloss Recessed Gimble Casing
 - 45° Tilt Head Gimble with Twist Lock
 - Required Cutout Hole: Ø 92mm
 - Dimensions: Ø103mm x 49mm
- GU5.3 Lamp Holder Cable & Power Cable
- Low Voltage Transformer

Mounting Kit for GU10 Downlights LEDGUKIT

- White Gloss Recessed Gimble Casing
 - 45° Tilt Head Gimble with Twist Lock
 - Required Cutout Hole: Ø 92mm
 - Dimensions: Ø103mm x 49mm
- Required Cutout Hole: Ø 92mm
- GU10 Lamp Holder & Mounting Bracket
- Insulated Power Cable

LED TUBE AND SENSOR TUBE LIGHTING

Available in Microwave Radar Sensor for use in Diffuser Batten Installations



T8 LED PIR Sensor Tube Lighting

- 630-1350 Lumens Light Output
- PIR Sensor Controlled Light Dims when No Movement and Brightens Upon Movement
- Available in 2ft (~600mm) and 4ft (1200mm) standard sizes.
- Available in 3 and 10 Minute ON-Timer
- Translucent Frosted Diffuser for Soft Light
- Available in Cool White
- Ideal for Carparks, Underpasses, etc. **5000K**



T8 LED Tube Lighting

- 800-1600 Lumens Light Output
- Available in 2ft (~600mm) and 4ft (1200mm) standard sizes.
- Translucent Frosted Diffuser for Soft Light
- Available in Cool White
- Easily Retrofittable Design

5000K

Model Numbers - LED Tubes
LEDTU10W (800lm / 2ft ~600mm)
LEDTU20W (1600lm / 4ft ~1200mm)

Model Numbers - LED Sensor Tubes
LEDTU9WS3 (630lm / 3min ON-Timer / 2ft~600mm)
LEDTU9WS10 (630lm / 10min ON-Timer / 2ft~600mm)
LEDTU19WS3 (1350lm / 3min ON-Timer / 4ft~1200mm)
LEDTU19WS10 (1350lm / 10min ON-Timer / 4ft~1200mm)



LED Sensor Tubes: A Bright Idea

Compound your energy savings with LED sensor tubes. Sensor tube use 80% less energy when dimmed. The tube dims when no movement is detected.

A dimmed 4ft T8 tube only consumes 4W!