



Experience Your Moment of Victory

With Securview Victory Series® HD video over coax surveillance solutions, featuring 720p & 1080p systems, low latency, anti-interference and up to 500m transmission distance.



Celebrating 36 Years of Supplying the Electronic Security Industry

- IP & ANALOGUE SURVEILLANCE
- HOME & BUILDING SECURITY
- CAR ALARMS & IMMOBILISERS
- POWER SUPPLIES & CABLES
- BUSINESS PHONE SYSTEMS
- ACCESS CONTROL SYSTEMS
- ENSA LED LIGHTING
- GPS TRACKING SYSTEMS
- INTERCOM SYSTEMS

Company Profile

22nd Edition - June 2014

RhinoCo Technology has been an integral part of the electronic security industry since 1978. Our company is proudly Australian-owned and still growing after 36 years in business.

We have become best known for our world renowned Rhino™ brand of vehicle security systems, our ENSA™ brand of LED lighting solutions, our Watchguard™ brand of wireless security and surveillance systems, our Securview™ range of professional video surveillance equipment, our VIP Vision™ range of IP Surveillance solutions and our EasyPBX™ business phone systems.

Since our beginning, we have been designing our own range of electronic security products, with dedicated teams of hardware and software engineers that focus on key product areas. More recently, this has continued with the latest ENSA range of Australian assembled and tested LED lighting products.

Our aim is to be more than your electronic security wholesaler and distributor. We strive to be an engineering & design house that provides tailored electronic security solutions to your specific needs. Whatever our client requirements, we strive to provide the winning solution.



Security Master Licence: 407530935
© RhinoCo Technology 2014



We Are Your Engineering Design House: Product Development Services Available



CONTENTS

■ PROFESSIONAL CCTV SURVEILLANCE 5

| | |
|--|----|
| Professional IP CCTV Surveillance | 6 |
| Stand Alone NVR Systems | 8 |
| IP Surveillance Camera Range | 10 |
| VIP Vision Smart PSS Client | 13 |
| Easy Install Network Surveillance | 14 |
| Securview Victory Series HD Video Over Coax | 15 |
| Stand Alone Analogue Surveillance | 18 |
| Complete Analogue Surveillance Kits | 19 |
| Analogue Surveillance Camera Range | 22 |
| Storage Solutions, CCTV Accessories, Monitors & Brackets | 24 |
| Networking & Wireless CCTV | 29 |

■ BUILDING SAFETY & SECURITY 33

| | |
|--|----|
| Hardwired Alarm Systems & Kits | 34 |
| Hardwired Alarm Accessories | 36 |
| Wireless Alarm Systems & Kits | 38 |
| Universal Transmitters & Receivers | 42 |
| Wireless Alarm Accessories | 43 |
| Professional Replica Security Products | 44 |
| Stand Alone Safety & Security | 45 |
| Paxton Access Control Systems | 46 |
| Alarm Communicators & Diallers | 48 |

■ VEHICLE SECURITY 49

| | |
|--|----|
| Vehicle Alarms & Engine Immobilisers | 50 |
| Upgrade Vehicle Alarm Systems | 52 |
| Vehicle Security Equipment & Accessories | 54 |
| GPS Tracking & Driving Recorder Systems | 56 |
| Mobile Digital Video Recorders | 58 |
| Vehicle Cameras & Reversing Assistance | 59 |

■ SECURITY INSTALLATION ESSENTIALS 61

| | |
|--|----|
| Batteries, Power Supplies & Connectors | 62 |
| Cabling & CCTV Power Supplies | 64 |
| Cable Tools, Video Baluns & Surge Protection | 66 |
| Remote Controls & Accessories | 68 |

■ COMMUNICATION SYSTEMS 69

| | |
|-------------------------------|----|
| Small Business Communications | 70 |
| PBX Business Phone Systems | 70 |
| PBX Phone System Accessories | 71 |
| Video Intercom Systems | 72 |

■ ENSA LED LIGHTING 75

| | |
|--|----|
| LED High Bay Lighting | 77 |
| LED Flood Lighting for Industry & Domestic | 78 |
| LED Tube & Sensor Tube Lighting | 81 |
| LED Lighting for Shopfitting | 82 |
| LED MR16 Downlights | 84 |

CCTV SURVEILLANCE

Network Surveillance 6

| | |
|---|----|
| IP Surveillance with Video Analytics | 6 |
| IP with Analytics Solutions & Accessories | 7 |
| Stand Alone Network Video Recorders | 8 |
| Complete Network Surveillance Kits | 9 |
| IP Surveillance Camera Range | 10 |
| Speciality IP Cameras & Lenses | 12 |
| VIP Vision Smart PSS Client | 13 |
| Easy Install Network Surveillance | 14 |

Victory Series Surveillance 15

| | |
|--|----|
| HD Video Over Coax Solutions | 15 |
| Victory Series Digital Video Recorders | 15 |
| Victory Series Surveillance Kits | 16 |
| Victory Series Surveillance Camera Range | 17 |

Analogue Surveillance 18

| | |
|---|----|
| Stand Alone Analogue Digital Video Recorders | 18 |
| Complete Analogue Surveillance Kits | 19 |
| Professional Analogue Digital Video Recorders | 20 |
| Easy Install Analogue Surveillance Kits | 21 |
| Analogue Camera Accessories | 21 |
| Analogue Surveillance Camera Range | 22 |

Accessories & Networking 24

| | |
|---|----|
| Optimised for CCTV Storage Solutions | 24 |
| Digital Video Recorder Cabinets & Cases | 25 |
| CCTV Warning Signs | 26 |
| Camera Housings & Brackets | 27 |
| Infrared Illuminators | 27 |
| Monitors & Brackets | 28 |
| Routers & Wireless Modems | 29 |
| Switches & Power Over Ethernet | 30 |
| Wireless Transmission 2.4GHz | 31 |
| Wireless Transmission 5.8GHz | 32 |





Offer high definition IP surveillance with intelligent video analytics



Watch on Your Smartphone



Web-Based Remote Live View



Email Alerts on System Events



Searchable Point of Sale



Intelligent Search Functionality



128CH Remote LiveView (Requires 2 Monitors)

Powerful & Versatile Playback

The powerful software available with VIP Vision's premium IP CCTV surveillance systems enables fast and flexible control when playing back recorded footage. Playback features include:

- Open by time, graphic record or event log.
- Supports digital watermark on exports.
- Multi-channel playback.
- Video enhancement for image fine-tuning.
- Searchable point of sale transactions.
- Auto backup to FTP.

Five Intelligent Search Functions

Search recorded footage faster and smarter with five intelligent search parameters. Easily find out when events occur by highlighting an area of interest directly onto the camera image (shown below).

The same intelligent functions can be applied to **people & object counting**. Simply select high traffic areas and the VIP Vision NVR will count how many people have passed in and out. This data is recorded along with surveillance footage and can be viewed as a graph or exported as CSV data.



Searching by general motion: Below shows how to define detection zones in playback using the intelligent search tool.

Draw regions areas of interest directly on the playback preview. You can also adjust the sensitivity and motion detection interval.



Flexible search: There are multiple ways you can find the evidence you're looking for. Five intelligent search functions including general motion, focus loss, foreign object detection, missing object detection and camera occlusion.

VIP Vision 4/8/16/24 Channel IP NVR Systems (4 to 24 Licenses)

Part No: NVR04 / NVR08 / NVR16 / NVR24



See page 10-12 for IP Camera Range

No matter the size or application, the VIP Vision range of IP NVRs are the ideal scalable surveillance system solutions. Like all the VIP Vision products, the IP NVRs utilise the high quality VIP Vision interface and Video Analytic software, which contains many intelligent features which help set the systems apart from competitor products.

Features:

- Built-in versatile, high performance analytic software
- Intelligent search, instant playback control and GUI recording schedule
- Optional Point of Sale and I/O device integration
- Manage 64 Channels simultaneously with VIP Vision CMS¹
- Supported by VIP Vision Central Management Software
- Instant response alerts you when alarm events occur
- Intelligent analytic functions: general motion, missing object, camera occlusion, foreign object, lose focus and signal loss
- Dual monitor display for simultaneous real-time display and playback.

Compatible with IP cameras from leading manufacturers such as Securview, Samsung, Arecont Vision and ACTi plus any ONVIF compliant device.

¹ CMS Sold Separately

VIP Vision Additional IP Camera Licenses (1 to 16 Licenses)

Part No: NVR-IP01 / NVR-IP04 / NVR-IP08 / NVR-IP12 / NVR-IP16

Expand cameras for VIP Vision NVR systems. Sets of IP Camera Licenses are available in 1, 4, 8, 12, 16 quantities. IP licenses are only for use with NVR base kits up to a maximum of 24 IP Channels.

VIP Vision Central Management System Server Software

Part No: NVR-SERVERSW (CMS Software & 4 Clients) / NVR-CLIENTSW (Additional 4 Clients)

The VIP Vision NVR-Based Central Management System (CMS) is a powerful piece of server software, and is the best solution for large-scale and high level enterprise projects. The CMS allows you to manage all of the installed VIP Vision based systems from multiple sites. It supports the VIP Vision NVR04-24. The powerful alarm management system can control unlimited matrix viewing consoles in the centralized control room.

The VIP Vision NVR CMS brings the traditional CMS system outside of the control room through internet access. Network based key operation systems can manage unlimited combinations of analogue and IP cameras, located worldwide, and operate them simultaneously via unlimited working stations. (Each working station requires its own client software).



Features:

- Authentic client-server architecture central video management
- Advanced GUI alarm management
- Supports unlimited servers, cameras, users, Point of Sale and I/O devices
- Unlimited layers of E-Map, Instant live-view and playback
- Unlimited display matrices for remote live view with PTZ & joystick control
- Supports H.264, MPEG4 and MJPEG Compression
- Supports IP, Analogue, Megapixel Cameras and Video Servers
- Supports Audio from Camera Microphone Inputs
- Alarm status, data mining / reporting function and remote backup



VIP Vision Digital Single Channel Video Server

Part No: VSIPENCODERV2

- Convert any analogue camera to IP
- H.264 video compression / Embedded Linux OS
- Single channel video/audio inputs; 32GB SD card slot; 4ch alarm input
- Real-time D1 encoding across all channels (704 x 576)



High Capacity Additional Network Attached Storage

Part No: DVRNAS3RU16B

- Designed to be used as Additional high capacity NVR storage
- Comes in 16 Bay 3RU case and includes 500W power supply
- Does not include hard disk drives

VIP Vision NVR Expansion Modules/Accessories

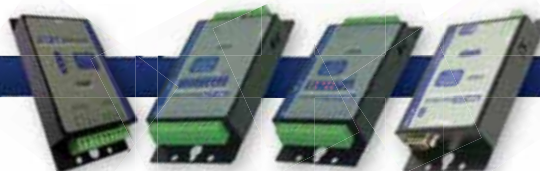
Part No: See Below

NVR-C08 - External USB to RS232/422/485 converter

NVR-C26 - 16 channel external digital output module. Req. NVR-C08

NVR-C28 - 4 channel external digital input and 4 channel output module. Req. NVR-C08

NVR-C31 - External point of sale converter. Can interface with most PoS systems / cash registers





More value per pixel: Record 1080p full high definition video & beyond

The VIP Vision stand alone NVR range provides immediate and customisable high definition IP surveillance solutions, ready for jobs of all sizes. 720p, 1080p and greater high definition configurations can be achieved with the VIP Vision range of IP cameras, delivering clearer image quality when you need it most. Each NVR also features comprehensive remote viewing capabilities, with compatibility for PC/network, iOS devices, Android devices and Windows Phone devices.



1080P FULL HD
ACROSS ALL CHANNELS

4 PORT
BUILT IN PoE SWITCH

VIP Vision 4 Channel IP Surveillance System

Part No: NVR4PRO

- Max. record streams: 4 x 1080p (1920 x 1080) and below including: 1.3MP (1280 x 960) and 720p (1280 x 720)
- HDMI and VGA simultaneous video output
- Inputs: 2x SATA up to 8TB / 2x USB / 1x RJ45 (1000M)



3.0MP RECORD
ACROSS ALL CHANNELS

8 PORT
BUILT IN PoE SWITCH

VIP Vision 8 Channel IP Surveillance System

Part No: NVR8PRO2

- Max. record streams: 8 x 3.0MP (2048 x 1536) and below including: 1080p (1920 x 1080), 1.3MP (1280 x 960), 720p (1280 x 720)
 - HDMI and VGA simultaneous video output
 - Inputs: 2x SATA up to 8TB / 2x USB / 1x RJ45 (1000M)
- Non-PoE version available. Model: NVR8PRO2NP



3.0MP RECORD
ACROSS ALL CHANNELS

16 PORT
BUILT IN PoE SWITCH

VIP Vision 16 Channel IP Surveillance System

Part No: NVR16PRO4

- Max. record streams: 16 x 3.0MP (2048 x 1536) and below including: 1080p (1920 x 1080), 1.3MP (1280 x 960), 720p (1280 x 720)
 - HDMI and VGA simultaneous video output
 - Inputs: 4x SATA up to 16TB / 3x USB / 1x RJ45 (1000M)
- Non-PoE version available. Model: NVR16PRO3NP



1080P FULL HD
ACROSS ALL CHANNELS

5.0 MP
MAX. RESOLUTION

VIP Vision 32 Channel IP Surveillance System

Part No: NVR32PRO

- Max. record streams: 16 x 3.0MP (2048 x 1536), 32 x 1080p (1920 x 1080) and below including: 1080p (1920 x 1080), 1.3MP (1280 x 960)
- HDMI and VGA simultaneous video output
- Inputs: 2x SATA up to 8TB / 2x USB / 1x RJ45 (1000M)



36CH@1080P
FULL HD RECORDING

5.0 MP
MAX. RESOLUTION

VIP Vision 64 Channel IP Surveillance System

Part No: NVR64PRO

- Max. 36 Channels at full HD 1080p (1920 x 1080)
- Record 64 Channels in 720P HD (1280 x 720)
- Record 64 Channels in D1 (720 x 576) at 25fps
- HDMI and VGA simultaneous video output
- Inputs: 16x SATA up to 64TB / 4x USB / 4x RJ45 (1000M)



96CH@1080P
FULL HD RECORDING

5.0 MP
MAX. RESOLUTION

VIP Vision 128 Channel IP Surveillance System

Part No: NVR128PRO

- Max. 96 Channels at full HD 1080p (1920 x 1080)
 - Record 128 Channels in 720P HD (1280 x 720)
 - Record 128 Channels in D1 (720 x 576) at 25fps
 - HDMI and VGA simultaneous video output
 - Inputs: 16x SATA up to 64TB / 4x USB / 4x RJ45 (1000M)
- Also available in 256 channel. Model: NVR256PRO

HD surveillance simplified: VIP Vision IP CCTV kits

- Available in 4, 8 & 16 channels
- 720p & 1080p* high definition recording
- Simple plug & play installation
- Pre-installed hard disk drive
- Built-in Power Over Ethernet switch
- All CAT5 & HDMI cables included



VIP Vision Stand Alone Network Video Recorder Surveillance Kits

Part No: NVR4PROPACK / NVR8PROPACK2 / NVR16PROPACK4

The NVRPROPACK range comes in three different kits: 4 channel, 8 channel and 16 channel. The stand alone kits are designed for quick installation and ease of operation. 1.3 megapixel (1280 x 960) weatherproof, infrared cameras (dome or bullet) come standard with each kit. Each kit features motion detection recording, scheduling, alarm system integration and remote viewing for iOS (iPad, iPhone), Android devices and Windows Phone devices. Each kit includes all required components including pre-installed hard drive, Power over Ethernet, CAT5 cables and power supplies.

NVR4PROPACK Kit Includes:

- 4 Channel H.264 Network Video Recorder
- Record 1.3MP at 25fps Across All Channels
- HDMI and VGA Video Outputs
- Built-in 4 Port Power Over Ethernet
- 1x 1TB Hard Drive, USB Mouse, HDMI Cable
- 4x 1.3MP Weatherproof IR Bullet Cameras VSIP1MPFBIRV2 - See p13 for more details
- 2x 10m/1x 20m/1x 30m CAT5 Cables

NVR8PROPACK2 Kit Includes:

- 8 Channel H.264 Network Video Recorder
- Record 1.3MP at 25fps Across All Channels
- HDMI and VGA Video Outputs
- Built-in 8 Port Power Over Ethernet
- 1x 2TB Hard Drive, USB Mouse, HDMI Cable
- 4x 1.3MP Weatherproof IR Bullet Cameras VSIP1MPFBIRV2 - See p13 for more details
- 4x 1.3MP Weatherproof IR Dome Cameras VSIP1MPDIRV2 - See p12 for more details
- 4x 10m/2x 20m/2x 30m/2x 1.5m CAT5 Cables

NVR16PROPACK4 Kit Includes:

- 16 Channel H.264 Network Video Recorder
- Record 1.3MP at 25fps Across All Channels
- HDMI and VGA Video Outputs
- Built-in 16 Port Power Over Ethernet
- 1x 2TB Hard Drive, USB Mouse, HDMI Cable
- 8x 1.3MP Weatherproof IR Bullet Cameras VSIP1MPFBIRV2 - See p13 for more details
- 8x 1.3MP Weatherproof IR Dome Cameras VSIP1MPDIRV2 - See p12 for more details
- 8x 10m/4x 20m/4x 30m/3x 1.5m CAT5 Cables



The truth is in the detail

Upgrade to 3 Megapixel and Record in 1080p Full HD

The NVRPRO and NVRPROPACK ranges can record in full 1080p and beyond by upgrading to 3 megapixel IP cameras. Record in 1080p (2.0 megapixel, 1920 x 1080) and 3.0 megapixel (2048 x 1536). RhinoCo recommends choosing additional storage to effectively operate 1080p systems - see page 25 for full storage options.



*Due to bit-rate limitations, some NVR and camera combinations may be limited to reduced frame rates than shown in this catalogue. Consult RhinoCo on the best configuration for you. 8 Channel model shown. Monitor (LCDLG23W) not included with NVRPROPACK range, optional extra.



3.0 Megapixel 20m Infrared Vandal Resistant IP Dome

Part No: VSIP3MPVDIR

Image

- 1/2.8" Sony Exmor CMOS Sensor
- Min. Illumination: Colour: 0.2 Lux/F1.4
Black & White: 0.01 Lux/F1.4
- Varifocal Lens 3.3~12mm at F1.4
- 79° (Wide) ~ 30° (Tele) Angle of View
- 20m Maximum Infrared Range
- Record 18fps at 3.0MP (2048 x 1536)
- Record 25fps at 1080p (1920 x 1080)

General

- 24VAC / 12VDC / PoE
- IP66 Rating
- IK10 Vandal Resistant
- MicroSD Card Slot - Up to 32GB
- Ø160mm x 119mm
- 1.25kg



3.0 Megapixel 20m Infrared Vandal Resistant IP Mini Dome

Part No: VSIP3MPVDMINIIR

Image

- 1/3" Progressive Scan CMOS Sensor
- Min. Illumination: Colour: 0.1 Lux/F1.2
Black & White: 0.01 Lux/F1.2
- Fixed 3.6mm Lens at F1.6
- 70° Angle of View
- 30m Maximum Infrared Range
- Record 20fps at 3.0MP (2048 x 1536)
- Record 25fps at 1080p (1920 x 1080)

General

- 12VDC / PoE
- IP66 Rating
- IK10 Vandal Resistant
- Ø110mm x 81mm
- 0.29kg



3.0 Megapixel 30m Infrared Vandal Resistant IP Mini Dome

Part No: VSIP3MPVDMINIIRC

Image

- 1/3" Progressive Scan CMOS Sensor
- Min. Illumination: Colour: 0.1 Lux/F1.2
Black & White: 0.005 Lux/F1.2
- Fixed 3.6mm Lens at F1.2
- 74° Angle of View
- 30m Maximum Infrared Range
- Record 20fps at 3.0MP (2048 x 1536)
- Record 25fps at 1080p (1920 x 1080)

General

- 12VDC / PoE
- IP66 Rating
- IK10 Vandal Resistant
- Ø108mm x 84mm
- 0.40kg

*Also available in 1.3MP
Model: VSIP1MPVDMINIIRC



3.0 Megapixel Vandal Resistant IP Mini Dome

Part No: VSIP3MPVDMINI3.6

Image

- 1/3" Progressive Scan CMOS Sensor
- Min. Illumination: Colour: 0.1 Lux/F1.2
- Fixed 3.6mm Lens at F1.2
- 72° Angle of View
- Record 20fps at 3.0MP (2048 x 1536)
- Record 25fps at 1080p (1920 x 1080)
- 2-axis adjustable camera

General

- 12VDC / PoE
- IP66 Rating
- IK10 Vandal Resistant
- MicroSD slot up to 64GB
- Ø110mm x 54mm
- 0.25kg



2.0 Megapixel 20m Infrared Vandal Resistant IP Dome

Part No: VSIP2MPVDIRM

Image

- 1/3" Progressive Scan Exmor CMOS
- Min. Illumination: Colour: 0.1 Lux/F1.2
Black & White: 0.01 Lux/F1.2
- 3-9mm motorized at F1.2
- 105° (wide) ~ 36° (tele) Angle of View
- 20m Maximum Infrared Range
- Record 25fps at 1080p (1920 x 1080)

General

- 12VDC / PoE
- IP66 Rating
- IK10 Vandal Resistant
- Ø151mm x 119mm
- 1.1kg





1.3 Megapixel 20m Infrared IP Mini Dome

Part No: VSIP1MPDIRV2

Image

- 1/3" Aptina CMOS Sensor
- Min. Illumination: Colour: 0.01 Lux/F1.2
Black & White: 0.005 Lux/F1.2
- Fixed 3.6mm Lens at F1.6
- 70° Angle of View
- 20m Maximum Infrared Range
- Record 25fps at 1.3MP (1280 x 960)

General

- 12VDC / PoE
- IP66 Rating
- Ø114mm x 86mm
- 0.40kg



5.0 Megapixel Full Body IP Camera

Part No: VSIP5MPFB

Image

- 1/2.5" Aptina CMOS Sensor
- Min. Illumination: Colour: 0.6 Lux/F1.2
Black & White: 0.08 Lux/F1.2
- Record 8fps at 5.0MP (2560 x 1920)
- Record 15fps at 3.0MP (2048 x 1536)
- Record 25fps at 1080p (1920 x 1080)
- Backlight Compensation: BLC/HLC/DWDR

General

- 24VAC / 12VDC / PoE
- MicroSD Card Slot - Up to 32GB
- 70mm x 150mm x 63mm
- 0.65kg
- * Lens & housing not included



3.0 Megapixel 20m Infrared Full Body IP Camera

Part No: VSIP3MPFBIR

Image

- 1/2.8" Sony Exmor CMOS Sensor
- Min. Illumination: Colour: 0.2 Lux/F1.4
Black & White: 0.01 Lux/F1.4
- Varifocal Lens 3.3~12mm at F1.4
- 79° (Wide) ~ 30° (Tele) Angle of View
- 20m Maximum Infrared Range
- Record 18fps at 3.0MP (2048 x 1536)
- Record 25fps at 1080p (1920 x 1080)

General

- 24VAC / 12VDC / PoE
- IP66 Rating
- Ø104mm x 307mm
- 1.25kg



3.0 Megapixel 20m Infrared IP Mini Bullet

Part No: VSIP3MPFBMINIIR

Image

- 1/3" Aptina CMOS Sensor
- Min. Illumination: Colour: 0.1 Lux/F1.4
Black & White: 0.005 Lux/F1.4
- Fixed 3.6mm Lens at F1.6
- 70° Angle of View
- 20m Maximum Infrared Range
- Record 18fps at 3.0MP (2048 x 1536)
- Record 25fps at 1080p (1920 x 1080)

General

- 12VDC / PoE
- IP66 Rating
- Ø64mm x 160mm
- 0.40kg



1.3 Megapixel 30m Infrared IP Mini Bullet

Part No: VSIP1MPFBIRV2

Image

- 1/3" Aptina CMOS Sensor
- Min. Illumination: Colour: 0.01 Lux/F1.2
Black & White: 0.005 Lux/F1.2
- Fixed 3.6mm Lens at F1.2
- 90° Angle of View
- 30m Maximum Infrared Range
- Record 25fps at 1.3MP (1280 x 960)

General

- 12VDC / PoE
- IP66 Rating
- 70 x 66 x 160mm
- 0.50kg



3.0 Megapixel Network Full High Definition PTZ Dome Camera

Part No: VSIP3MPPTZ

Image

- 1/3" CMOS Image Sensor & 20x Optical Zoom
- Min. Illumination: Colour: 0.05 Lux/F1.6 / B&W: 0.005 Lux/F1.6
- Varifocal Lens 4.7mm ~ 94.0mm F1.6~F3.5
- Record 15fps at 3 Megapixels (2048 x 1536)
- Record 25fps at 1080p (1920 x 1080)
- Angle of View: 58.2° (wide) ~ 2.9° (tele)
- Backlight Compensation: BLC / HLC / WDR (100db, 1080p mode)

General

- Ethernet Control RJ-45 (10/100 Base-T)
- 360° Pan / -2°~90° Tilt Range / 180° Auto-flip
- PTZ Modes: Up to 255 Preset Modes / 8 Tour / 5 Pattern / Auto Pan / Auto Scan
- 3D Positioning DH-SD / Pelco-P/D Protocols
- Preset Speed: Pan: 240°/s / Tilt: 200°/s
- Supports MicroSD Card Recording Up to 32GB
- 24VAC/3A Power Supply
- IP67 Ingress Protection Rating
- Ø230mm x 322mm / 5.0kg



3.0 Megapixel Network Full High Definition Infrared PTZ Dome Camera

Part No: VSIP3MPPTZIR

Image

- 1/3" CMOS Image Sensor & 20x Optical Zoom
- Min. Illumination: Colour: 0.05 Lux/F1.6 / B&W: 0.005 Lux/F1.6
- 80m Maximum Infrared Range
- Varifocal Lens 4.7mm ~ 94.0mm F1.6~F3.5
- Record 15fps at 3 Megapixels (2048 x 1536)
- Record 25fps at 1080p (1920 x 1080)
- Angle of View: 58.2° (wide) ~ 2.9° (tele)
- Backlight Compensation: BLC / HLC / WDR (100db, 1080p mode)

General

- Ethernet Control RJ-45 (10/100 Base-T)
- 360° Pan / -2°~90° Tilt Range / 180° Auto-flip
- PTZ Modes: Up to 255 Preset Modes / 8 Tour / 5 Pattern / Auto Pan / Auto Scan
- 3D Positioning DH-SD / Pelco-P/D Protocols
- Preset Speed: Pan: 240°/s / Tilt: 200°/s
- Supports MicroSD Card Recording Up to 32GB
- 24VAC/3A Power Supply
- IP66 Ingress Protection Rating
- Ø230mm x 382mm / 7.0kg



Flashview 1.3 Megapixel Network Camera & Recorder with Video Alert Notification

Part No: VSPV13M

Stay connect with all that you love! A Megapixel internet protocol camera that will let users stay connected and get video notification alerts on their smartphone. When movement is detected in the monitored area, it will automatically record and send an alert to the users. Users can immediately view the alert video and live stream via smartphone, iPad or PC (email).

Image

- 1/3" Live MOS image sensor
- Min. Illumination: 0.1 Lux/F1.5
- Fixed 3.8mm at F1.5
- Detector Range: 76° arc with 5m distance
- Record 25fps at 1.3 Megapixels (1280 x 960)
- * **iPhone not included.**

General

- External alarm I/O device connection
- Built-in two-way audio transmission
- Remote surveillance compatible
- MicroSD card storage up to 32GB
- 60(W) x 90(H) x 30(D)mm w/o bracket
- 12VDC power source



MEGAPIXEL IP CAMERA LENSES

SECURVIEW

Manual Megapixel Lenses

Part No: See Below



- VSLM6-12MM-MP3**
• 6~12mm Varifocal Manual Iris 3MP Lens, 1/2"
- VSLM-AV4.5-10MP5**
• 4.5~10mm Varifocal Manual Iris 5MP Lens, 1/2" IR Corrected F1.6
- VSLM-AV8-16MP5**
• 8~16mm Varifocal Manual Iris 5MP Lens, 1/2" IR Corrected F1.6

SECURVIEW

Automatic Megapixel Lenses

Part No: See Below



- VSLA3.5-8MP1**
• 3.5~8mm Varifocal Automatic Iris 1.3MP Lens, 1/2"
- VSLA-AV4.5-10MP5**
• 4.5~10mm Varifocal Automatic Iris 5MP Lens, 1/2" IR Corrected F1.6



VIP Vision Smart PSS Client:
Intuitive, Powerful and Free



VIP Vision Smart PSS Client Software

VIP Vision's Smart PSS (Professional Surveillance System) client for Windows and Macintosh OS X* operating systems delivers a simple and affordable alternative to network video recorder dependent IP CCTV surveillance. By downloading the light weight VIP Vision Smart PSS client, you can turn your PC or Mac into a professional high definition surveillance system.

Take advantage of the full range of VIP Vision IP surveillance cameras and integrate CCTV into your existing network infrastructure. Simply add as few as one VIP Vision IP camera to your network to get started building your own tailored HD surveillance solution. The Smart PSS client will automatically search for your cameras, as well as existing IP CCTV systems that may already be on your network. See in depth feature set below:



Complete Control

- Control the hardware needs of your surveillance system
- Customise your recorder system - storage capacity, processor power, backup options, etc.



Intuitive Interface

- Tabbed user interface, similar to popular web browsers
- Fluid and fast operation
- Swiftly interact with your CCTV with easy & responsive drag and drop controls



Powerful Features

- Use up to 5.0MP cameras and record up to 16 channels
- Record motion detection, camera masking and more
- Remote view & receive alarm notifications via email & more



Flexible Functions

- Comprehensive user & permission controls with detailed system logs
- Group cameras, save layouts, customise camera tours/tasks, configure eMaps, etc.

Download & try it now

The VIP Vision Smart PSS client is available for download on the RhinoCo Technology website.

www.rhinoco.com.au/support/downloads

It is a lightweight download that comes with the Smart PSS client software and PC-NVR application that facilitates the recording/storage of footage. PC-NVR settings and recording options are configured through the VIP Vision Smart PSS client for ease of use.



Available for Windows & OS X

* Software is currently in beta development for OS X systems.



WATCHGUARD STANDALONE IP SURVEILLANCE KIT



100FPS@1.3MP
HD RECORDING

BUILT IN PoE SWITCH
Plug & Play

WATCH ON YOUR
SMARTPHONE



Watchguard Easy to Install 4 Channel Network Video Recorder Kit

Part No: NVR4ENTPACK2

The Watchguard™ NVR4ENTPACK2 is a compact, high definition surveillance system ideal for homes and small businesses. This CCTV package includes four 1.3 megapixel, weather proof bullet cameras capable of recording 1.3MP (1280 x 720) high definition footage in real-time 25fps. The network video recorder has a built-in 4 port power over Ethernet switch, allowing easy plug and play installation.

NVR4ENTPACK2 Kit Includes:

- 4 Channel H.264 Network Video Recorder
- Record 1.3MP at 25fps Across All Channels
- HDMI and VGA Video Outputs
- 4 x 1.3MP Weatherproof IR Bullet Cameras
- Model: VSIP1MPFBIRV2
- Built-in 4 Port Power Over Ethernet
- 1x 1TB Hard Drive, USB Mouse, HDMI Cable
- 2x 10m/1x 20m/1x 30m CAT5 Cables

The 1.3 megapixel cameras bundled with the NVR4ENTPACK2 have a maximum recording resolution of 1280 x 960. When compared to traditional analogue recording resolutions, this is three times greater than D1 (704 x 576) and twelve times greater than CIF (352 x 288). The additional resolving power of IP CCTV allows for greater surveillance area coverage, providing larger images and preserving finer details.



1.3 Megapixel Resolution
1280 x 960 pixels

- Crisp, Fine Detail
- Resolved Shapes
- Sharper Edges



D1 Resolution
704 x 576 pixels

- Some Detail/Large Objects
- Recognisable Shapes
- Blurred Edges



CIF Resolution
352 x 288 pixels

- Lost Detail
- Vague Shapes
- Indiscernible Edges

* Monitor not included with NVR4ENTPACK2, optional only.



Your moment of victory:
HD video over coaxial

The Securview Victory Series® grants you the power to setup new and convert old analogue CCTV systems to high definition with the simplicity of conventional analogue CCTV installations. Each product in the range uses the HDCVI video transmission standard (high definition composite video interface), established by the CCTV industry for the CCTV industry. HDCVI transmission technology delivers 3 signals (video/audio/control) across a single coaxial cable. This results in low latency, long transmission distance high definition video with lossless real-time preview at a lower cost compared to other HD video over coax systems. Experience your moment of victory with Securview Victory Series.

HDSDi

HDCVI

| | | |
|--|--|---|
| <p>HD Video Signal Transmission Distance</p> <p>Anti-interference Capabilities</p> <p>Overall System Cost</p> | <p>Up to 100m</p> <ul style="list-style-type: none"> Signal distortion over long distances with expensive cable requirements | <p>Up to 500m*</p> <ul style="list-style-type: none"> Up to 5 times the transmission distance at 720p; 3 times at 1080p with low signal distortion |
| | <p>Poor</p> <ul style="list-style-type: none"> High frequency interference leads to increased bit error ratio | <p>Good</p> <ul style="list-style-type: none"> Adopts low frequency modulation technology to ensure stable video transmission at high image quality |
| | <p>High</p> <ul style="list-style-type: none"> Greater system cost; higher demand in quality of cable and installation | <p>Low</p> <ul style="list-style-type: none"> Lower cost systems; inherits the same installation process of conventional analogue systems |

*Achieved using 75-3 RG-6 coaxial cable and 720p HDCVI cameras



Victory Series 720p HDCVI Digital Video Recorder

Part No: CVR4 / CVR8 / CVR16

Features a maximum recording resolution of 720p (1280 x 720).

Victory Series 4 Channel 720p DVR:

- Max. resolution 720p (1280 x 720) at 25fps
- 1 x SATA port for up to 4TB of HDD storage
- 4, 8 & 16 camera 1080p real-time preview
- Simultaneous HDMI & VGA video output
- Playback search by motion detection
- Backup via network & external USB storage
- Comprehensive remote view on iPad, iPhone, Android devices and Windows Phone

Victory Series 8 Channel 720p DVR:

- Max. resolution 720p (1280 x 720) at 25fps
- 1 x SATA port for up to 4TB of HDD storage
- 4, 8 & 16 camera 1080p real-time preview
- Simultaneous HDMI & VGA video output
- Playback search by motion detection
- Backup via network & external USB storage
- Comprehensive remote view on iPad, iPhone, Android devices and Windows Phone

Victory Series 16 Channel 720p DVR:

- Max. resolution 720p (1280 x 720) at 25fps
- 2 x SATA port for up to 8TB of HDD storage
- 4, 8 & 16 camera 1080p real-time preview
- Simultaneous HDMI, VGA & BNC video output
- Playback search by motion detection
- Backup via network & external USB storage
- Comprehensive remote view on iPad, iPhone, Android devices and Windows Phone



Victory Series 1080p HDCVI Digital Video Recorder

Part No: CVR8F

Features a maximum recording resolution of 1080p (1920 x 1080).

Victory Series 8 Channel 1080p DVR:

- Max. resolution 1080p (1920 x 1080) at 25fps
- 2 x SATA port for up to 8TB of HDD storage
- 4, 8 & 16 camera 1080p real-time preview
- Simultaneous HDMI, VGA & BNC video output
- Playback search by motion detection
- Backup via network & external USB storage
- Comprehensive remote view on iPad, iPhone, Android devices and Windows Phone





SECURVIEW
VICTORY SERIES

RECORD ALL CHANNELS
720p (1280x720)

COMPREHENSIVE
REMOTE VIEW 

**720P HD VIDEO
UP TO 500m**

Victory Series 720p HDCVI Surveillance Kits

Part No: CVR4PACK / CVR8PACK / CVR16PACK

This Securview Victory Series CVRPACK range is available in 4, 8 and 16 channel kits. Each kit includes weatherproof, 20m range infrared, 1.3 megapixel cameras that use the HDCVI transmission standard, allowing for 500m transmission distances over coaxial cable. They are the perfect high definition over coax solution and can be used to upgrade/convert existing conventional analogue systems.*

DVRs can record each camera at 720p resolution (1280 x 720) in real-time (25fps) and can be customised to automatically record over old footage. This range features comprehensive remote view options for iOS (iPad, iPhone), Google Android devices and Windows Phone devices. Each system can also be viewed over a Windows PC network or viewed remotely over the Internet. For full overview of each kit, see below:

CVR4PACK Includes:

- 4 Channel H.264 Digital Video Recorder with HDCVI transmission standard
- 1 x 1TB Pre-installed Hard Drive
- Records in 720p (1280 x 720) at 25fps
- Simultaneous HDMI & VGA video output
- 4 x 1.3 Megapixel 20m Infrared Bullets
Model: VSCVI1MPFBIR
- 1 x 5A 12VDC Switch Mode Power Supply
- 1 x 5 Way Power Splitter Cable
- 1 x 1.5m CAT5 Ethernet Cable
- 1 x 1m HDMI cable

CVR8PACK Includes:

- 8 Channel H.264 Digital Video Recorder with HDCVI transmission standard
- 1 x 2TB Pre-installed Hard Drive
- Records in 720p (1280 x 720) at 25fps
- Simultaneous HDMI & VGA video output
- 4 x 1.3 Megapixel 20m Infrared Bullets
Model: VSCVI1MPFBIR
- 4 x 1.3 Megapixel, 20m Infrared Domes
Model: VSCVI1MPDIR
- 1 x 5A 12VDC Switch Mode Power Supply
- 2 x 5 Way Power Splitter Cable
- 1 x 1.5m CAT5 Ethernet Cable
- 1 x 1m HDMI cable

CVR16PACK Includes:

- 16 Channel H.264 Digital Video Recorder with HDCVI transmission standard
- 1 x 2TB Pre-installed Hard Drive
- Records in 720p (1280 x 720) at 25fps
- Simultaneous HDMI, VGA & BNC video output
- 8 x 1.3 Megapixel 20m Infrared Bullets
Model: VSCVI1MPFBIR
- 8 x 1.3 Megapixel, 20m Infrared Domes
Model: VSCVI1MPDIR
- 2 x 5A 12VDC Switch Mode Power Supply
- 4 x 5 Way Power Splitter Cable
- 1 x 1.5m CAT5 Ethernet Cable
- 1 x 1m HDMI cable



Available on the
App Store

ANDROID APP ON
Google play

Available on
Windows Phone

* Incompatible with standard analogue cameras; system must use Victory Series cameras. Coaxial cable not included. 8 Channel model shown. 23" widescreen monitor (LCDLG23W) optional extra, not included in kit. All logos/branding are property of their respective owners.



1.3 Megapixel 20m Infrared Fixed Lens Mini Bullet

Part No: VSCVI1MPFBIR

- 1/3" 1.3 Megapixel CMOS Sensor
- Min. Illumination: 0.01 Lux/F1.2
- Fixed 3.6mm Lens; 70° Angle of View
- 20m Maximum Infrared Range
- Record 25fps at 720p (1280 x 720)
- 500m Transmission Distance
- IP66 Rating, Weatherproof
- 70 x 66 x 160mm, 12VDC

Full HD 1080 Also available in 2MP Full HD, Model: VSCVI2MPFBIR



1.3 Megapixel 20m Infrared Fixed Lens Mini Dome

Part No: VSCVI1MPDIR

- 1/3" 1.3 Megapixel CMOS Sensor
- Min. Illumination: 0.01 Lux/F1.2
- Fixed 3.6mm Lens; 70° Angle of View
- 20m Maximum Infrared Range
- Record 25fps at 720p (1280 x 720)
- 500m Transmission Distance
- IP66 Rating, Weatherproof
- Ø114 x 86mm, 12VDC

Full HD 1080 Also available in 2MP Full HD, Model: VSCVI2MPDIR



720p Vandal Resistant 20m Infrared Fixed Lens Mini Dome

Part No: VSCVI1MPVDIR

- 1/2.9" 1.0 Megapixel CMOS Sensor
- Min. Illumination: 0.01 Lux/F1.2
- Fixed 3.6mm Lens; 70° Angle of View
- 20m Maximum Infrared Range
- Record 25fps at 720p (1280 x 720)
- 500m Transmission Distance
- IP66 Rating, IK10 Vandal Resistant
- Ø110 x 81mm, 12VDC



1.3 Megapixel Vandal Resistant 20x Optical Zoom PTZ Dome

Part No: VSCVI1MPPTZ

Image

- 1/3" 1.3 Megapixel CMOS Sensor
- Min. Illumination: 0.05 Lux/F1.2
- 4.7~94mm Varifocal Lens (Angle: 54°~3°)
- Close Focus Distance 100~1000mm
- Day/Night: Auto (ICR)
- Auto/Manual Focus Control
- Record 25fps at 720p (1280 x 720)
- 20x Optical Zoom; 16x Digital Zoom
- 2D/3D Digital Noise Reduction
- BLC / HLC / Digital WDR

Full HD 1080 Also available in 2MP Full HD, Model: VSCVI2MPPTZ

General

- 500m Transmission Distance
- IP66 Rating, IK10 Vandal Resistant
- Ø222 x 322mm, 24VAC/2.2A

PTZ

- Pan: 0°~360°; Tilt: 2°~90°; Auto-flip 180°
- Preset Speed: Pan 400°/s; Tilt 300°/s
- Mode: 5 Pattern; 8 Tour; Auto-Pan/Scan
- Protocol: DH-SD, Pelco-P/D
- Up to 255 presets



1.3 Megapixel 100m Infrared 20x Optical Zoom PTZ Dome

Part No: VSCVI1MPPTZIR

Image

- 1/3" 1.3 Megapixel CMOS Sensor
- Min. Illumination: 0.05 Lux/F1.2
- 4.7~94mm Varifocal Lens (Angle: 54°~3°)
- Close Focus Distance 100~1000mm
- 100m Maximum Infrared Range
- Day/Night Auto (ICR)
- Record 25fps at 720p (1280 x 720)
- 20x Optical Zoom; 16x Digital Zoom
- 2D/3D Digital Noise Reduction
- BLC / HLC / Digital WDR

Full HD 1080 Also available in 2MP Full HD, Model: VSCVI2MPPTZIR

General

- 500m Transmission Distance
- IP66 Rating, Weatherproof
- Ø205 x 336mm, 24VAC/2.2A

PTZ

- Pan: 0°~360°; Tilt: 15°~90°; Auto-flip 180°
- Preset Speed: Pan 240°/s; Tilt 200°/s
- Mode: 5 Pattern; 8 Tour; Auto-Pan/Scan
- Protocol: DH-SD, Pelco-P/D
- Up to 255 presets

WATCHGUARD STAND ALONE ANALOGUE DVRS



The Watchguard DVRENT range is ideal for use in a home or small business, where the owner is after a high quality Digital Video Recorder with entry level functions. Each DVR utilises H.264 Video Compression technology, multiple backup methods and a user friendly On-Screen Display (OSD). The OSD can be easily navigated by the user via the front of the DVR panel, operated wirelessly using the included IR remote control or by connecting the USB mouse.

The DVRENT range supports Push Video Notifications - receive alarm and motion alerts on your smartphone over the Internet.



RECORD ALL CHANNELS **D1@ 25FPS** WATCH ON YOUR SMARTPHONE PUSH VIDEO NOTIFICATION

Watchguard 4 Channel Stand Alone Analogue DVR

Part No: DVR4ENT7

- 4 Channel H.264 Digital Video Recorder
- 4 Alarm Inputs (1 Push Video) / 1 Output
- Composite / VGA Video Output
- Supports 1 SATA HDD (Up to 2TB)
- Watch on Smartphone
- 100fps at D1 (704 x 576)
- Infrared Remote Included
- * HDD Not Included**



RECORD ALL CHANNELS **D1@ 25FPS** WATCH ON YOUR SMARTPHONE PUSH VIDEO NOTIFICATION

Watchguard 8 Channel Stand Alone Analogue DVR

Part No: DVR8ENT4

- 8 Channel H.264 Digital Video Recorder
- 8 Alarm Inputs (2 Push Video) / 1 Output
- HDMI / Composite / VGA Video Output
- Supports 1 SATA HDD (Up to 4TB)
- Watch on Smartphone
- 200fps at D1 (704 x 576)
- Infrared Remote Included
- * HDD Not Included**



RECORD ALL CHANNELS **D1@ 25FPS** WATCH ON YOUR SMARTPHONE PUSH VIDEO NOTIFICATION

Watchguard 16 Channel Stand Alone Analogue DVR

Part No: DVR16ENT2

- 16 Channel H.264 Digital Video Recorder
- 16 Alarm Inputs (4 Push Video) / 1 Output
- HDMI / Composite / VGA Video Output
- Supports 2 SATA HDD (Up to 2TB/Port)
- Watch on Smartphone
- 400fps at D1 (704 x 576)
- Infrared Remote Included
- * HDD Not Included**





Watchguard Complete Analogue CCTV Surveillance Kits

Part No: DVR4ENTPACK7 / DVR8ENTPACK4 / DVR16ENTPACK2

RECORD ALL CHANNELS **D1 (704x576)** WATCH ON YOUR SMARTPHONE PUSH VIDEO NOTIFICATION

The DVRENTPACK range is available in 4, 8 and 16 channel kits. They include weatherproof, 15m range infrared, 650 TVL cameras. This makes them ideal for indoor or outdoor use, in all kinds of lighting conditions. DVRs can record each camera at D1 resolution (704 x 576) in real-time (25fps) and can be customised to automatically record over old footage. Each kit can be viewed over a Windows PC network or viewed remotely over the Internet. All cabling, remote control, hard disk drive (up to 2TB) and power supplies are included in the kit.

DVR4ENTPACK7 Kit Includes:

- 4 Channel H.264 Digital Video Recorder
- 1TB Hard Drive / IR Remote
- Records All Cameras in D1 (704x576) at 25fps
- Composite / VGA Video Output
- 4 x 650TVL 15m Infrared, Weatherproof Bullet Cameras
- Power Supplies & Network Cable
- Pre-wired and Pre-terminated Line-fed Camera and Power Cables Included
- 4 Alarm Inputs / 1 Push Video Input

DVR8ENTPACK4 Kit Includes:

- 8 Channel H.264 Digital Video Recorder
- 1TB Hard Drive / IR Remote / USB Mouse
- Records All Cameras in D1 (704x576) at 25fps
- HDMI / Composite / VGA Video Output
- 4 x 650TVL 15m Infrared, Weatherproof Bullet Cameras
- 4 x 650TVL 15m Infrared, Vandal Resistant, Dome Cameras
- Pre-wired and Pre-terminated Line-fed Camera and Power Cables Included
- 8 Alarm Input - 2 Push Video Input

DVR16ENTPACK2 Kit Includes:

- 16 Channel H.264 Digital Video Recorder
- 2TB Hard Drive / IR Remote / USB Mouse
- Records All Cameras in D1 (704x576) at 25fps
- HDMI / Composite / VGA Video Output
- 12 x 650TVL 15m Infrared, Weatherproof Bullet Cameras
- 4 x 650TVL 15m Infrared, Vandal Resistant, Dome Cameras
- Pre-wired and Pre-terminated Line-fed Camera and Power Cables Included
- 16 Alarm Inputs / 4 Push Video Inputs

All in the One Box:

Watchguard Complete 4 Channel Analogue Surveillance Kit



| CAMERA SPECIFICATION | VSWFF15MIR650B |
|----------------------|------------------------------|
| Image Sensor | 1/3" CMOS + IR Cut Filter |
| Min. Illumination | 0.2 Lux/F2.0 |
| Lens | Fixed 3.6mm |
| Maximum IR Range | 15m |
| Resolution | Colour: 650TVL / B&W: 700TVL |
| Housing Rating | IP66 |
| Dimensions | 170(L) x 65(W) x 69(H)mm |
| Power | 12VDC |
| Weight | 0.6kg |

| CAMERA SPECIFICATION | VSDFF15MIR650VP |
|----------------------|------------------------------|
| Image Sensor | 1/3" CMOS + IR Cut Filter |
| Min. Illumination | 0.2 Lux/F2.0 |
| Lens | Fixed 3.6mm |
| Maximum IR Range | 15m |
| Resolution | Colour: 650TVL / B&W: 700TVL |
| Housing Rating | IP66 |
| Dimensions | Ø110 x 90mm |
| Power | 12VDC |
| Weight | 0.5kg |

* 8 Channel model shown. Monitor optional extra, not available with kit. For monitor-included packs, use model numbers: DVR4ENTPACK7M / DVR8ENTPACK4M / DVR16ENTPACK2M

SECURVIEW PROFESSIONAL ANALOGUE DVRs

The Securview Professional Range of analogue DVRs are fully featured analogue surveillance systems designed with versatility at their core.

This range gives you the freedom to customise your storage, backup, recording and monitoring needs with the largest feature set of any premium analogue DVR.

Features:

| | |
|--|--|
| <p>RECORD ALL CHANNELS D1@ 25FPS</p> | <p>DVD / USB / NETWORK BACKUP</p> |
| <p>6 SATA & 1 eSATA UP TO 24TB</p> | <p>WATCH ON YOUR SMARTPHONE</p> |
| <p>32 SYSTEMS UP TO CHANNELS</p> | <p>MULTIPLE VIDEO OUTPUT HDMI / VGA / BNC</p> |

Mix & Match Cameras to DVRVIEW DVRs:
See page 22-24 for Camera Range



SECURVIEW

Professional Real-Time Recording Stand Alone DVR Range

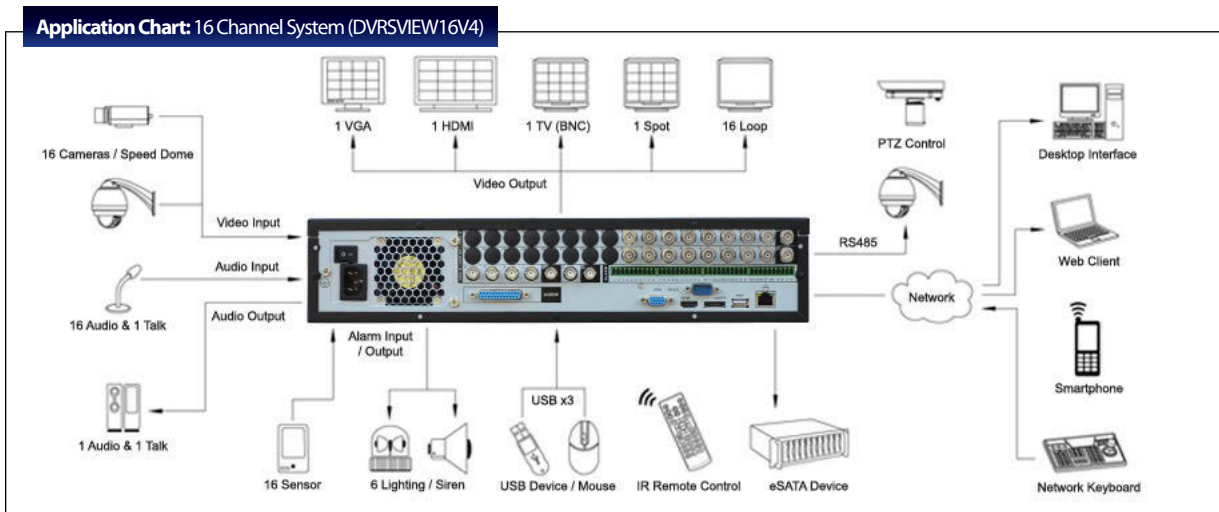
Part No: DVRVIEW8V4 / DVRVIEW16V4 / DVRVIEW24V4 / DVRVIEW32V4

The DVRVIEW DVR range is available in four different systems: 8 channel, 16 channel, 24 channel and 32 channel. Each DVR comes standard with the features listed above. For a more detailed view, see below.

Each DVRVIEW model features:

- H.264 Dual Stream Video Compression
- 1080p Real-time Display Preview
- D1 Recording (704 x 576) in Real-time (25fps) Across All Channels
- 16 Channel Synchronous Real-time Playback
- Built-in DVD / CD Burner for Backup
- Up to 24TB of Internal HDD Storage
- Multiple Video Output - HDMI / VGA / BNC / Spot / TV
- RS485 Compatible for PTZ Control
- 3x USB Ports / Single RS232 Port
- View on Smartphone / Tablet - iOS / Android / Windows Phone
- Dimensions 440(W) x 460(D) x 89(H)mm
- 6.5kg (without HDDs)

*HDDs sold separately



* 16 Channel model shown.



Camera Installation Monitor with 2.8" LCD

Part No: VSCAMTESTERV2

Portable 2.8" LCD test monitor used to test, adjust and focus surveillance cameras while mounted.

- Supports over 20 common PTZ protocols including: Pelco P/D, Samsung, Panasonic, TeleEye; read/display of PTZ commands
- Looped output allows camera signal to remain connected to the DVR during configuration
- Auto selects PAL or NTSC signal mode
- 11 hours rechargeable battery
- 960 x 240 display resolution



Securview Analogue Camera Lenses

Part No: See Below

- VSLA2.8-12DC** - 2.8 ~ 12mm DC Varifocal auto iris lens
- VSLA6-60DC** - 6 ~ 60mm DC Varifocal auto iris lens
- VSLM2.8-12** - 2.8 ~ 12mm Varifocal manual iris lens



Full Featured Speed Dome Controller & Joystick

Part No: VSPTZKB

- Controls up to 32 speed dome cameras
- RS485 Multi Protocol with LCD Display
- 0~255 address range for camera & decoder
- Up to 128 preset positions and 6 cruising tracks
- Manual or automatic camera controller
- Manual control of focus, zoom & lens iris



Composite to VGA Converter

Part No: VID2VGA

- Converts Composite (BNC/RCA) to VGA
- Output Resolution up to 1280x1024 at 60Hz
- Use of Cost Effective PC / VGA Monitors with DVRs
- Includes 12VDC Power Supply



Four Way Video Distribution Amplifier (240VAC)

Part No: VSCA17

- Split 1 video signal into 4 without loss.
- 1x Composite Video Input / 4 x Composite Video Outputs



RF Modulator for Surveillance Cameras

Part No: VSARFMD

This unit allows the connection of a CCTV camera with or without sound to a TV that has a TV aerial socket / RF socket. It has 2 x RCA plugs, 1 x video, 1 x audio and a DC socket for a 12VDC power supply (100mA).



Audio Microphone with Pre-Amp

Part No: VSAMICV2

- Add-on mini audio microphone, for all cameras that require an audio function
- High sensitivity microphone
- Audio output 2Vp-p (max)
- Power: 12VDC at 10mA
- The microphone is designed to be mounted next to the camera



700 TVL Day/Night Full Body Camera

Part No: VSFB700W

Image

- 1/3" Sony Exview HAD CCD II Sensor
- Sony Effio-E DSP
- 700 TVL Resolution
- Mount Type C / CS
- Min. Illumination: 0.001 Lux/F1.2
- BLC / HLC / DWDR Backlight Compensation

General

- 12VDC
- 131(L) x 131(W) x 60(H)mm
- 0.50kg
- *Lens Not Included



650 TVL 40m Infrared Weather Proof Outdoor Camera

Part No: VSWVF40MIR2.8-12

Image

- 1/3" Sony Exview HAD CCD II Sensor
- Sony Effio-E DSP
- 650 TVL Resolution
- 2.8~12mm Varifocal Manual Lens
- Min. Illumination: 0.001 Lux/F2.0
- 40m Maximum IR Range

General

- 12VDC
- 260(L) x 103(W) x 101(H)mm
- 1.80kg



650 TVL 40m Infrared Weather Proof Outdoor Camera

Part No: VSWVF40MIR9-22

Image

- 1/3" Sony Exview HAD CCD II Sensor
- Sony Effio-E DSP
- 650 TVL Resolution
- 9~22mm Varifocal Manual Lens
- Min. Illumination: 0.001 Lux/F2.0
- 40m Maximum IR Range

General

- 12VDC
- 260(L) x 103(W) x 101(H)mm
- 1.80kg



650 TVL 15m Infrared Weather Proof Bullet Camera

Part No: VSWFF15MIR650B

Image

- 1/3" CMOS + IR Cut filter
- 650 TVL Resolution
- 3.6mm Fixed Lens
- Min. Illumination: 0.2 Lux/F2.0
- 15m Maximum IR Range

General

- 12VDC
- IP66 Rating
- 170(L) x 65(W) x 69(H)mm
- 0.60kg



SECURVIEW

560 TVL Day/Night PTZ Dome with 23x Optical Zoom

Part No: VSPTZ55WDN

The durable VSPTZ55WDN is built for outdoor use. The dome camera features automatic tracking/patrol modes and 128 preset positions. Four alarm inputs can be linked to preset camera positions and one alarm output.

Image

- 1/4" Super HAD CCD Sensor
- 560 TVL Resolution
- 3.5~80.5mm Lens at F1.6~F2.4
- Min. Illumination: 0.2 Lux/F1.4

PTZ Function

- 23x Optical / 16x Digital Zoom
- AWB/ATW White Balance
- RS485 Pelco-D/P
- Speed: 300°/s Pan | 150°/s Tilt

General

- 24VAC / 2Amp
- IP66 External Housing
- Ø340mm x 440mm
- 7.20kg





700 TVL 30m Infrared Wide Dynamic Range Vandal Resistant & Weather Proof Dome Camera

Part No: VSDVF30MIR700W

Image

- 1/3" Super HAD CCD II Sensor
- Sony Effio-E DSP
- 700 TVL Resolution
- 2.8~12mm Varifocal Manual Lens
- Min. Illumination: 0.005 Lux/F1.4
- 30m Maximum IR Range
- BLC / HLC / WDR (75dB) Backlight Compensation

General

- 12VDC
- Ø160mm x 119mm
- 1.0kg



700 TVL 20m Infrared Vandal/Weather Proof Dome Camera

Part No: VSDVF20MIR700

Image

- 1/3" Sony Exview HAD CCD II Sensor
- Sony Effio-E DSP
- 700 TVL Resolution
- 2.8~12mm Varifocal Manual Lens
- Min. Illumination: 0.005 Lux/F1.4
- 20m Maximum IR Range
- BLC / HLC / DWDR Backlight Compensation

General

- 12VDC
- Ø160mm x 119mm
- 1.30kg



650 TVL 30m Infrared Vandal/Weather Proof Dome Camera

Part No: VSDVF30MIR2.8-12

Image

- 1/3" Sony Exview HAD CCD II Sensor
- Sony Effio-E DSP
- 650 TVL Resolution
- 2.8~12mm Varifocal Manual Lens
- Min. Illumination: 0.001 Lux/F2.0
- 30m Maximum IR Range

General

- 12VDC
- Ø119mm x 100mm
- 0.90kg



650 TVL 15m Infrared Indoor Dome Camera

Part No: VSDVF15MIR650V2

Image

- 1/3" Exview HAD CCD II
- 650 TVL Resolution
- 4 - 9mm Manual Varifocal
- Min. Illumination: 0.001 Lux/F2.0
- 15m Maximum IR Range

General

- 12VDC
- Ø127mm x 91mm
- 0.60kg
- Indoor Dome Only



650 TVL 15m Infrared Vandal/Weather Proof Dome Camera

Part No: VSDFF15MIR650VP

Image

- 1/3" CMOS + IR Cut filter
- 650 TVL Resolution
- 3.6mm Fixed Lens
- Min. Illumination: 0.2 Lux/F2.0
- 15m Maximum IR Range

General

- 12VDC
- IP66 Rating
- Ø110mm x 90mm
- 0.50kg

Storage for Life



Seagate Hard Drives Optimized for Surveillance



Surveillance HDD

Camera Supported: Up to 32

- Capacity: 3TB, 4TB
- Spin Speed: 7200 RPM
- Cache: 64MB
- RAID Support, Low Power, RV sensor



NAS HDD

Camera Supported: Up to 32

- Capacity: 2TB, 3TB, 4TB
- Spin Speed: 5900 RPM
- Cache: 64MB
- Low Power, Quiet Operation



Video 3.5 HDD

Camera Supported: < 18

- Capacity: 1TB, 2TB, 3TB, 4TB
- Spin Speed: 5900 RPM
- Cache: 64MB
- Low Power, Quiet Operation

© 2014 Seagate Technology LLC. All rights reserved. Seagate, Seagate Technology and the Wave logo are trademarks or registered trademarks of Seagate Technology LLC or one of its affiliated companies in the United States and/or other countries. All other trademarks or registered trademarks are property of their respective owners. When referring to drive capacity, one gigabyte, or GB, equals one billion bytes and one terabyte, or TB, equals one thousand billion bytes. Your computer's operating system may use a different standard of measurement and report a lower capacity. In addition, some of the listed capacity is used for formatting and other functions and will not be available for data storage. Complying with all applicable copyright laws is the responsibility of the user. Exact battery life subject to product model, normal usage conditions and configurations. Dispose of batteries properly. Seagate reserves the right to change, without notice, product offerings or specifications.





RhinoCo Recommends:
Seagate Storage Solutions

RhinoCo Technology recommends the Seagate range of hard disk drives optimised for use with CCTV surveillance. They are the ideal storage solution for reliability and performance, even under continual, prolonged use. The VIP Vision, Securview and Watchguard lines of DVRs and NVRs each utilise Seagate storage solutions for an optimum surveillance experience.



Video 3.5 1TB Hard Drive

Part No: HD1TBSN (1TB)

Reliable, 1TB capacity hard disk drive optimised for low power consumption and quiet operation. Ideal for entry level or home surveillance system storage.



NAS 2TB Hard Drive

Part No: HD2TBSN

Purpose built NAS 2TB hard disk drive. Designed and tested for reliable use in 24/7 operating environments such as network attached storage.



NAS 4TB Hard Drive

Part No: HD4TBSN

Purpose built NAS 4TB hard disk drive. Designed and tested for reliable use in 24/7 operating environments such as network attached storage.

PROFESSIONAL DVR RACKMOUNT UNITS & CABINETS



High Quality Professional Rackmount Cabinets

Part No: RACKMOUNTCAB12 (12RU)
RACKMOUNTCAB18 (18RU)
RACKMOUNTCAB27 (27RU)
RACKMOUNTCAB37 (37RU)

Available in 4 Sizes:

- 12RU (W600 x D450 x H650mm)
- 18RU (W600 x D450 x H800mm)
- 27RU (W600 x D800 x H1400mm)
- 37RU (W620 x D800 x H1800mm)

- Metal Side Panels
- Metal Rear Door with Lock
- Inbuilt 12cm Cooling Fans
- Glass Front Panel with Deluxe Lock
- 4 x (12RU / 18RU) Outlet Universal Power Adaptor Sockets
- 6 x (27RU / 37RU) Outlet Universal Power Adaptor Sockets
- Base with Four Twin Castor Wheels (2 with Brakes)
- Stands Also available



High Quality Professional Wallmount Cabinets

Part No: WALLCABINET6W
WALLCABINET15W

WALLCABINET6W:

- 6RU (W600 x D450 x H370mm)
- 18KG

WALLCABINET15W:

- 15RU (W600 x D600 x H770mm)
- 37KG

- Bevel door with maximum viewing window allows sight of all items installed in the wall mount cabinet
- Tempered glass front panel
- Fixed steel panel rear door
- Front door lock only
- Rear cable manager plate

DVR RACKMOUNT UNITS



Professional 19" 3U Rack Mount PC/DVR Case

Part No: DVRCASE3 / DVRCASE3RUNAS

This professional 19" rack mount PC/DVR case comes supplied with all the cabling required to connect your components.

- 3U rack mount chassis
- Power supply not included

Also Available in a 16 Bay Rack Mount



High Performance 16 Bay Storage Server

Part No: DVRSERVER3RU16B

This model is built to handle high volume data response in an ultra cool thermal environment that maximizes storage server possibilities, making it ideal for security applications as an operating server or network attached storage.

This range supports redundant power supplies, up to 50 bays of hot-swap hard drives, hot-swap fans and Dual/Quad Intel® Xeon™ and AMD® Opteron™ server board. Featuring all server-grade dedicated hardware such as Intel Xeon CPU, Intel main board, and solid-state OS hard drives, SAS or SATA storage options, RAID (0,1,5,6,10) configurations support, this system is flexible enough to meet all your storage requirements from 10 - 100TB per server.

Designed and built by RhinoCo Technology in Australia, it is also backed up by comprehensive local hardware and technical support.

² Upgradable to 2 x 2 TB

³ Analogue Max. D1 / IP Mega Pixel Recording Rate is camera dependent

- Drive bays: 16 x 3.5" Hot Swap, 2 x 2.5" Internal, 1 x Slim CD, 1 x Slim FDD
- Ventilation: 3 x 9cm Fans, 2 x 6cm Fans
- SAS, SATA or SATA 3.0Bb/s interface
- LSI 16 Port RAID Config 0, 1, 5, 6, 10
- Intel Xeon(R) Quad Core X3430 or above
- RAM: 4GB DDR3 or above
- Intel(R) Server Board S3000 series
- NIC: Dual GbE
- Ubuntu Operating System
- 64GB Kingston SSD
- 10x USB 2.0 Ports
- 600W Fixed or Redundant PSU with Warning Indicator
- 480(W) x 130.5(H) x 710(D) mm

CCTV SURVEILLANCE SIGNS



Securview A4 CCTV Warning Sign

Part No: VSA24

- Corflute A4 Sign (212 x 299mm)
- CCTV Warning Sign
- Weather and UV Resistant
- Security Camera Graphic



A3 CCTV Warning Sign

Part No: VSCDCC

- Corflute A3 Sign (420 x 297mm)
- CCTV Warning Sign
- Weather and UV Resistant



A4 CCTV Warning Stickers Pack

Part No: VSCDSC

- Includes 4x A4 Sized CCTV Stickers
- 2x Rear Adhesive for flat surfaces
- 2x Front Adhesive for interior windows

CAMERA HOUSINGS & BRACKETS


**Right Angle Wall Mount
Bracket for VSIP3MPVDIR**
Part No: VSIP3MPVDIRBKT

- Aluminium Alloy Body
- 250 x 160 x 102mm
- Max.15kg Load Capacity


**Wall Mount Bracket for Victory
Series and IP Dome Cameras**
Part No: VSIPDOMEBKT

- Aluminium Body
- 2160 x 120 x 74mm
- Max.1kg Load Capacity


**Weatherproof Camera Housing
with Bracket**
Part No: VSGL606

- **Suitable for Cameras No Larger than:
76(W) x 72(H) x 260(L)mm**
- Weatherproof IP66 Rated
- Lightweight Aluminium Construction
- Housing Dimensions:
113(W) x 106(H) x 410(L)mm


**Weatherproof Camera Housing
with Bracket**
Part No: VSICA13

- **Suitable for Cameras No Larger than:
76(W) x 72(H) x 220(L)mm**
- Weatherproof IP66 Rated
- Lightweight Aluminium Construction
- Housing Dimensions:
110(W) x 100(H) x 340(L)mm


**Classical Weatherproof Camera
Housing with Bracket**
Part No: VSTPH-1000

- **Suitable for Cameras No Larger than:
90(W) x 70(H) x 230(L)mm**
- Weatherproof IP66 Rated
- Lightweight Aluminium Construction
- Housing Dimensions:
110(W) x 100(H) x 340(L)mm


**Heavy Duty Outdoor Housing
& Pendant Set**
Part No: VSPTZHOUSINGEX

- **180mm Recommended Maximum
Length of Camera/Lens**
- Weatherproof IP66 Rated
- Powder Coated Aluminium
- Housing Dimensions incl. Bracket:
275(W) x 330(H)mm
- **Corner Bracket VS15-05BM Available**


**White Swivel & Tilt Camera
Brackets**
Part No: VSICA9

- **VSICA9 - White Plastic Bracket**
- 150mm in Length
- Off-White Colour


**Metal Swivel & Tilt Camera
Brackets**
Part No: VSICA11

- **VSICA11 - Metal Bracket**
- 100mm in Length


Generic Pole Bracket
Part No: VS15-CD04BV

- Allows Camera Mounting on Poles with Adjustable Fixing Bands
- Suitable for Poles Ø110~150mm
- Maximum Load: 40kg


8"/"12"/"14" Tinted Dome Covers
Part No: VSTD8 / VSTD12 / VSTD14

- Available in 8", 12" and 14" Diameters

INFRARED ILLUMINATORS


100 Metre Infrared Illuminator
Part No: VS-IR12

- 12pcs LED
- 100m Maximum Indoor IR Distance
- 10° Wide Coverage Beam Angle
- -10°C ~ 50°C Operating Temperature
- 0.7kg
- W90 x H95 x D100mm


150 Metre Infrared Illuminator
Part No: VS-IR18

- 18pcs LED
- 150m Maximum Indoor IR Distance
- 10° Beam Angle
- -10°C ~ 50°C Operating Temperature
- 0.7kg
- W90 x H95 x D100mm


160 Metre Infrared Illuminator
Part No: VS-IR160

- 160m Maximum Indoor IR Distance
- 40° Wide Coverage Beam Angle
- -10°C ~ 50°C Operating Temperature
- Ø130 x 120 x 90mm

19" Widescreen LG Monitor

Part No: LCDLG19W

Display more cameras and have a clear view of all your feeds with this 19" widescreen monitor. Enjoy crisp and vivid pictures with 30000:1 contrast ratio and 5ms response time.

- 1366 x 768 Maximum Resolution
- 16:9 Aspect Ratio
- 5ms Response Time



23" and 27" Full High Definition Widescreen Monitors

Part No: LCDLG23W / LCDLG27W

Display more cameras and have a clear view of all your feeds with these 23" and 27" widescreen monitors. Each model is designed to save you on space and electricity with elegantly slim design and energy efficient LED backlighting technology.

23" LED Backlit LCD Monitor:

- 1920 x 1080 HD Max. Resolution
- 16:9 Aspect Ratio
- HDMI Video Input
- 5ms Response Time

27" LED Backlit LCD Monitor:

- 1920 x 1080 HD Max. Resolution
- 16:9 Aspect Ratio
- HDMI, DVI, VGA Video Inputs
- 5ms Response Time



MONITOR BRACKETS



Wall Mount Flat Panel Bracket

Part No: LCDBRACKET

- Standard VESA 50/75/100
- Accommodates Display Sizes 10" to 22" (25~56cm) - Diagonally Measured
- Min. & Max. Distance from Wall: 80mm
- ±15° Vertical Tilt
- Max Load 10kg



Wall Mount Flat Panel Swivel Bracket

Part No: LCDBRACKETSW

- Standard VESA 50/75/100/200x100
- Accommodates Display Sizes 10"~30" (25~76cm) - Diagonally Measured
- 180° Swivel Rotation at Wall
- 190° Swivel Rotation at Arm
- Min. Distance to Wall: 80mm
- Max. Distance to Wall: 280mm
- ±20° Vertical Tilt
- Max Load 20kg



Wall Mount Tilt LCD/TFT Monitor Bracket

Part No: TFTBRACKETSW

- Standard VESA 50/75/100/200/100x200
- Min. Distance from Wall 100mm
- 90° Horizontal Swivel
- Max Load 30kg



Wall Mount Tilt LCD/TFT Monitor Bracket

Part No: TFTBRACKET

- Standard VESA 50/75/100/200/100x200
- Min. Distance from Wall 100mm
- ±20° Vertical Tilt
- Max Load 30kg

Ceiling Mount TFT/LCD Monitor Bracket

Part No: VSCACMB

- Standard VESA 50/75/100
- Adjustable Drop 500-850mm
- Easy to Install
- Max Load 20kg





3.5G Wireless Hotspot with SIM Slot

Part No: SAP-MB-1112

Create instant wireless or wired 3.5G hotspots at remote locations (such as construction sites, special occasions, conventional centres, vehicles, or where DSL/cable is not available).

Use it as wireless access point at home to extend wireless coverage. It can function as a wireless USB server for several devices at the same time. No settings required, just plug and play for printer sharing, remote printing, real time and online monitor, scheduled recording and file sharing via FTP or SMB. Includes an internal backup battery for handling power interruptions.

- Built-in 3.75G Modem and Long Lasting Li-Polymer Batteries
- Share Various Connections - Mobile Broadband, xDSL, WiFi Modem/Public
- 2T2R Technology - Enjoys Wireless Data Transfer Rates up to 300Mbps
- WiFi Protected Setup (WPS) - One Button Encryption and Connection
- Advanced Power Saving Technology - 80% Reduction in Power Consumption



ADSL2/2+ Wireless Modem Router with 4x 10/100 LAN Ports

Part No: SAP-RM-1802

Ideal solution for office, home or SOHO users to share high speed wired and wireless network.

- ADSL2/2+ (Annex A/I/J/L/M)
- 1x RJ-11 ADSL Port
- 4x RJ-45 10/100Mbps LAN Ports
- 802.11n (150Mbps) Wireless Access
- WEP / WPA / WPA2 Security
- WDS Configuration
- Integrated Firewall



2.4GHz Wireless Router with 4x Gigabit LAN and 1x WAN

Part No: SAP-RB-1733

Designed to cater to greater wireless Internet demands, between flats and floors, warehouses, larger offices.

- 1x RJ-45 10/100/1000Mbps WAN Port
- 4x RJ-45 10/100/1000Mbps LAN Ports
- 1x USB 2.0 (for External 3G/4G modem)
- 802.11n (300Mbps) Wireless Access
- WEP / WPA / WPA2 Security
- WDS Configuration
- Integrated Firewall
- 1000mW Transmission Power



2.4/5.8GHz Wireless Router with 4x Gigabit LAN and 1x WAN

Part No: SAP-RB-1830

Dual band router designed to avoid 2.4GHz interference from appliances, phones, bluetooth devices etc.

- Dual Band 2.4/5.8Ghz Transmission
- 1x RJ-45 10/100Mbps WAN Port
- 4x RJ-45 10/100/1000Mbps Lan Ports
- 1x USB 2.0 (for External 3G/4G modem)
- 802.11n (300Mbps) Wireless Access
- WEP / WPA / WPA2 Security
- WDS Configuration
- Integrated Firewall





Gigabit Ethernet Switches Without Power Over Ethernet

Part No: SAP-HG-3105 / SAP-HG-3216 / SAP-HG-3224

The Sapido Switch range is ideal for those who required speed and stability in their network. The gigabit 1000Mbps Ethernet connection across the range allows for fast completion of bandwidth-intensive transfers. The range accounts for home, office and SOHO to Small - Medium Businesses.

SAP-HG-3105 Features:

- 5x Gigabit LAN Ports
- Connection Speed up to 1000Mbps
- Plug and Play Installation
- Green Ethernet - Up to 50% Power Reduction
- Full/Half Duplex Mode / Auto MDI/MDIX
- Auto Negotiation

SAP-HG-3216 Features:

- 16x Gigabit LAN Ports
- Connection Speed up to 1000Mbps
- Supports Loop Detection
- Green Ethernet - Up to 80% Power Reduction
- 32Gbps High Speed Switching Capacity
- 8K MAC Address Table
- Full/Half Duplex Modes - 2000Mbps Full Duplex

SAP-HG-3224 Features:

- 24x Gigabit LAN Ports
- Connection Speed up to 1000Mbps
- Supports Loop Detection
- Green Ethernet - Up to 80% Power Reduction
- 48Gbps High Speed Switching Capacity
- 16K MAC Address Table
- Full/Half Duplex Modes - 2000Mbps Full Duplex



Ethernet Switches With Power Over Ethernet

Part No: VS8PORTPOEV2 / SRW208P / SRW224G4P

Brings speed and stability with the benefit of Power over Ethernet (PoE). The range is available in 8 port, managed 8 port and managed 24 port models. The Power over Ethernet Switch range provides a reliable foundation for your business network.

VS8PORTPOEV2 Features:

- 8x 10/100Mbps Auto MDIX LAN Ports
- Connection Speed up to 100Mbps
- Full/Half Duplex Modes - 200Mbps Full Mode
- Power Input 110-240VAC
- Power Output 48VDC / 310mA Per Port

SRW208P Features:

- 8x 10/100Mbps LAN Port Managed Switch
- Connection Speed up to 100Mbps
- 802.1d STP Support
- 2x Gigabit (1000 Mbps) Uplinks
- 2x Mini-GBIC Combo Slots
- Power Input 110-240VAC
- Power Output 48VDC / 310mA Per Port

SRW224G4P Features:

- 24x 10/100Mbps LAN Port Managed Switch
- Connection Speed up to 100Mbps
- 802.1d STP Support
- 2x Gigabit (1000 Mbps) Uplinks
- 2x Mini-GBIC Combo Slots
- Power Input 110-240VAC
- Power Output 48VDC / 310mA Per Port



Power Over Ethernet (PoE) Injectors/Receivers

Part No: WT-CAT5POEI / WT-CAT5POER

WT-CAT5POEI Injector:

This Ethernet line in Power Over Ethernet Injector provides 48VDC power and up to 100Mbps data transfer rate through a standard CAT5 cable.

WT-CAT5POER Receiver:

This Ethernet line in Power Over Ethernet Receiver provides 5VDC & 12VDC power output up to 100m. Supports gigabit speeds (1000Mbps). Receiver is 802.3af compliant.

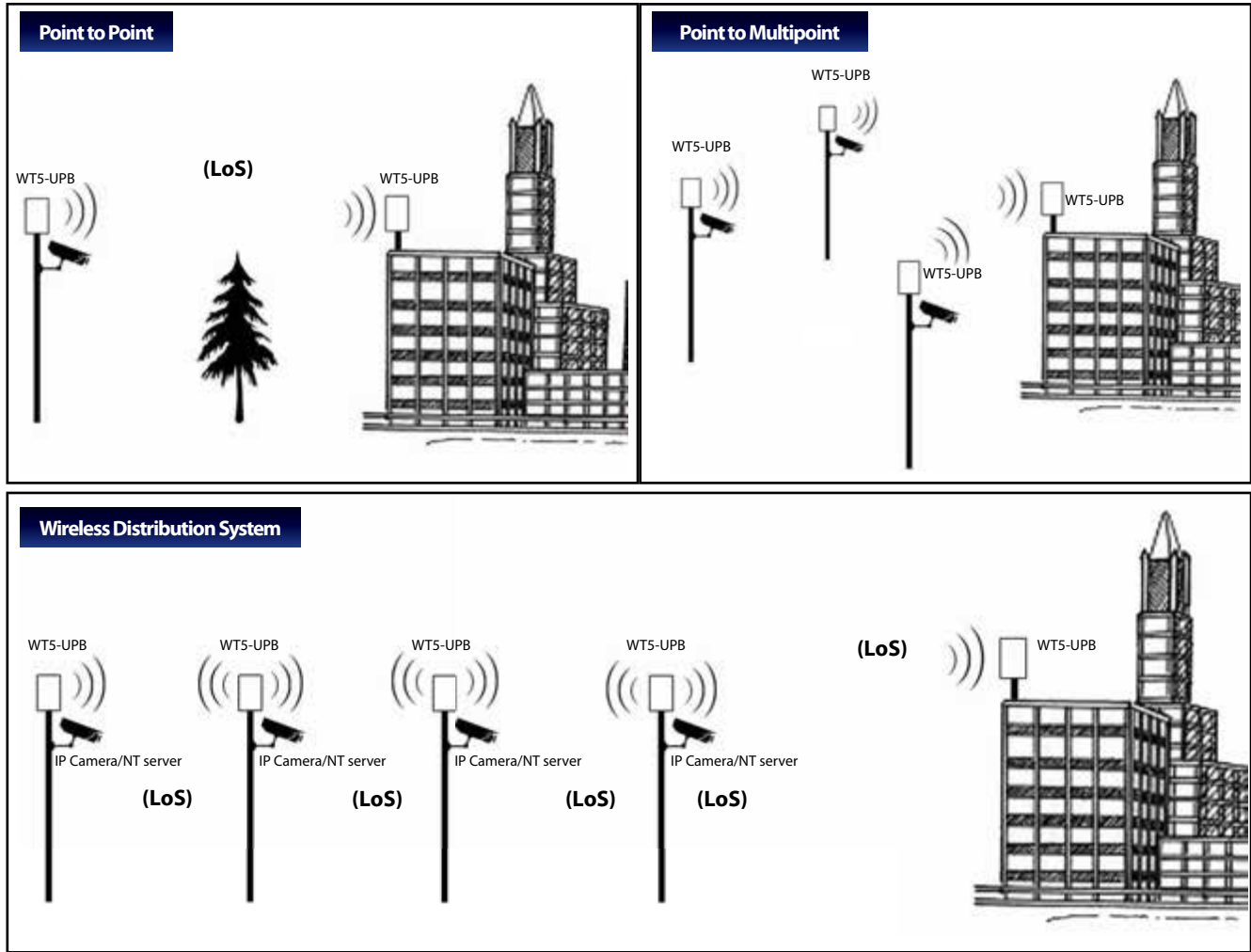
CAT5e Ethernet Cables in Various Lengths

Part No: CABLELAN1.5 (1.5m) NETCABLE (10m) **NETCABLE20 (20m) NETCABLE30 (30m)**

High quality CAT5e Ethernet cables suitable for IP cameras and Power over Ethernet switches. Available in 1.5m, 10m, 20m and 30m lengths.

WIRELESS CCTV

We can customise your wireless solution utilising our range of analogue and digital transmission devices. If you have a specific inquiry please visit us at www.rhino.com.au for further information or call our sales team. Below are some examples of typical installations using our wireless transmission products:



Glossary of Terms

IEEE 802.11 - A set of standards for wireless local area network (WLAN) computer communication in the 5 GHz and 2.4 GHz public spectrum bands.

Access Point (AP) - Wireless base station which coordinates communication for wireless clients between each other and with the wired network.

Wireless Distribution System (WDS) - Method for linking many wireless access points to form a mesh-like network.

Wireless LAN - One or more access points and their associated clients which communicate by radio to form a data network.

Wireless Bridge - A pair of access points configured in bridge mode allowing two wired networks to be transparently connected through wireless link.

Line of Sight (LoS) - A clear, straight line path between wireless devices which is in no way obstructed by buildings or trees.

WIRELESS TRANSMISSION 2.4GHZ

2.4GHz Panel Antenna 18dBi

Part No: VS15-2400AP18

Our 18dbi directional panel antenna can extend an existing wireless access point on a single floor by positioning the unit in the corner of the building.

These antennas can also be used for a point-to-point network bridge between buildings in a campus-type environment or between two remote areas. Finally, they provide multi-floor transmission when placed on a ceiling, as the higher power output extends the range through typical flooring materials. Our antenna package includes several mounting options, such as fixed, wall-adjustable, and pole.



2.4GHz Digital Wireless Transmitter & Receiver Set

Part No: AVTXRX2.4

This system is the ideal product for use when multiple wireless video/audio links are required for any commercial, industrial or consumer application.

An example application would be to create a wireless network over which you wanted to transmit video footage from your camera to your DVR or Monitor. Simply connect the camera to the Transmitter box and your DVR or Monitor to the Receiver box.



WIRELESS TRANSMISSION 5.8GHZ (DIGITAL)

**5GHz Wireless Access Point 802.11a/n 600mw 16dBi****Part No: WT5-UNS**

- 150+ Mbps real outdoor throughput and up to 15km+ range. Featuring 2x2 MIMO technology, the WT5-UNS links significantly faster and farther than ever before
- New antenna array designs featuring 16dBi at 5GHz with optimised cross-polarity isolation in a compact form-factor
- Dual Ethernet Connectivity: the WT5-UNS provides a secondary Ethernet port with software enabled POE output for seamless IP Video integration
- Intelligent PoE: Remote hardware reset circuitry of WT5-UNS allows for device to be reset remotely from power supply location

**5.8GHz Panel Antenna 21dBi****Part No: WT5-PA21**

- 21dBi 5.8GHz panel directional antenna, perfect for use as a point-to-point network for wireless connections between LANs
- Ideal for campus-type environments or between two remote areas

**5.8GHz Panel Antenna 25dBi****Part No: WT5-UPB**

- 25 dBi low power directional panel antenna for connecting two LAN points wirelessly. Includes stabilising enclosure to prevent interference
- This compact and powerful antenna is powered by PoE sources

**5.8GHz Sector Directional Antenna 21dBi****Part No: WT5-SA21**

- WT5-SA21 is a professional quality "cell site" base station antenna
- Designed primarily for carrier-class applications and service providers using the 5.1 to 5.9 GHz ISM band
- Includes a directional orientation bracket for adjusting the main beam width and angle to maximise reception and transmission signal strength
- Designed specifically for outdoor building-to-building applications with buildings of various heights

**5.8GHz Omni-directional Antenna 12dBi****Part No: WT5-ODA12**

- The WT5-ODA12 is designed to radiate radio-frequency energy equally in all directions for widespread and all-point wireless deployment.
- This antenna is especially useful for optimising coverage when you want to place your wireless access point or router out of plain view, in a wiring closet or above a ceiling pad.

**5.8GHz Grid Antenna 24dBi****Part No: WT5-GA24**

- Compact 5.8GHz grid antenna suitable for point-to-point operation with simple installation and calibration
- Low mast and wind loading
- Single piece, surface-treated, corrosion resistant aluminium alloy grid reflector
- Stainless steel/aluminium mount
- Vented weatherproof feed housing with micro-porous membrane
- Durable solid brass feed
- Good multi-path interference rejection

SECURITY & SAFETY PRODUCTS

Hardwired Alarm Systems 34

| | |
|------------------------------------|----|
| Watchguard Hardwired Alarm Systems | 34 |
| WGAP864 Panel Accessories | 35 |
| Hardwired Alarm Accessories | 36 |
| Passive Infrared Detectors | 36 |
| Sirens & Strobes | 36 |
| Panic Buttons | 37 |
| Reed Switches | 37 |

Wireless Alarm Systems 38

| | |
|---|----|
| Watchguard Digital Series Alarm Systems | 38 |
| Watchguard Wireless Alarm Systems | 40 |
| Universal Transmitters & Receivers | 42 |
| Wireless Alarm Accessories | 43 |
| Passive Infrared Detectors | 43 |
| Panic Buttons & Keypads | 43 |
| Wireless Sirens & Strobes | 43 |

Stand Alone Security 44

| | |
|--|----|
| Professional Replica Security Products | 44 |
| Replica CCTV Cameras | 44 |
| Replica Alarm Kits | 44 |
| Stand Alone Security Products | 45 |
| Alarm Warning Stickers | 45 |

Access Control 46

| | |
|---------------------------------|----|
| Paxton Access Control Systems | 46 |
| Net2 Access Control Solutions | 46 |
| Net2 Access Control Accessories | 47 |

Alarm Communicators 48

| | |
|------------------------------------|----|
| Permaconn Communicator Range | 48 |
| GSM & Ethernet Alarm Communication | 48 |





Watchguard™ Alarms, a renowned leader in the electronic security industry for some 34 years, takes great pride in bringing you a new range of Professional Alarm Panels. Our Australian-Designed SMS8 Alarm Panel has been the flagship product of the Watchguard Brand, with many thousands sold and protecting properties worldwide. We have now expanded our range of alarm panels by introducing a wider range of options in this field.

Our new 864 panels are produced by South Africa's leading control panel manufacturer - Inhep Digital Security (IDS). Their product range is renowned for its robust reliability and simplicity. Their dedicated team of engineers have been responsible for designing and developing intrusion detection equipment that now has an international following. The design focus has always been 'simplicity and reliability.' Their proprietary products are regularly tested by SABS (South African Bureau of Standards) and, where applicable, by the appropriate test laboratories in other countries to ensure compliance to international standards.

Over the past 20 years this range of alarm panels has developed a hard-won reputation of robust reliability and quality. Developed to meet the harsh conditions of Africa, the alarm panels are used by the premier monitoring and response companies in South Africa - probably the world's most demanding security market. This recognition has extended onto the international stage with IDS distribution networks now serving at least 16 countries on 4 continents.

IDS engineers are driven by the passion to eliminate clutter and complexity, and to develop simple, robust, elegant solutions to real-world problems. Watchguard™ Alarms is proud to be associated with IDS - where others create confusion, together we create certainty.



WATCHGUARD HARDWIRED ALARM SYSTEMS

CONTACT ID
SECURITY DIALLER

EXPANDABLE TO
64 ZONES



8 Zone Alarm Panel & LCD Keypad - Expandable to 64 Monitored Zones

Part No: WGAP864

The WGAP864 is a versatile, microprocessor-based, fully featured 8/64 Zone alarm panel, which has two partitions. The alarm panel provides immediate notification of burglary, fire, medical & panic conditions. There is a dedicated panic zone, monitored siren output, auxiliary power outputs and five (expandable to seven) program able outputs that may be programmed to perform various trigger/switching functions.

WGAP864 Panel and Keypad Features:

- 64 Zones (Up to 16 On-board)
- 8 Partitions; 128 User Codes
- Supports Up to 8 keypads
- 25 Fully Programmable Outputs
- Ability to Log Up to 1000 Events
- 1.5A Available On-board Power (Dual PSU)
- Dedicated 500mA Battery Charger for Optimal Backup Battery Management
- Up to 4 Bus Receivers (Fully Programmable from the Keypad)
- IDS's Renowned One-button Arming
- Quick Arm Modes: Stay; Away and; Stay and Go
- 4 Stay Profiles (Quick-select Specific Stay Profiles via Keypad Shortcut): Stay, Night Stay, Day Stay, Perimeter
- Supports Star/Daisy Chain Modules up to 300m
- Dual and Split Reporting; Battery Self Test
- Dedicated Panic Zone
- Telephone Communicator
- Expanded Heat Sink
- Optional Tamper per Zone
- Separate Box Tamper Zone
- Maintenance Code
- No Activity Arming
- Recall Bypass Selected
- Auto Arm/Disarm per Partition
- User-enabled Chime and Buzz Zones
- Programmable Loop Response Time
- Excellent Protection Against Lightning ("Zap Tracking" and Transient Suppressors)



CONTACT ID
SECURITY DIALLER

EXPANDABLE TO
64 ZONES

Professional 8 Zone Hardwired Alarm Kit - Expandable to 64 Zones

Part No: WGAP864PACK

For Complete Home and Commercial Building Protection

If you're after complete commercial building protection, you need the WGAP864PACK hardwired alarm system. It contains a premiere Watchguard™ 8 Zone alarm panel, internal and external sirens, motion sensors, reed switches, back up battery and power supplies. These detectors and sirens help protect all areas of your building by monitoring rooms and offices for movement and detecting when door or windows are opened. This gives you greater peace of mind that your building is secure against thieves, burglars and vandals.

WGAP864KIT Includes:

- 1x 8 Zone Alarm Control Panel
- 1x LCD Keypad
- 1x Complete Outdoor Siren/Strobe
- 3x Dual Technology PIR Sensors
- 2x Surface Reed Switches
- 1x Indoor Top Hat Piezo Siren
- 1x 16VAC Power Supply
- 1x 7Ah Lead Acid Backup Battery

* Note: expansion boards, central monitoring services, cabling and additional keypads are sold separately to this package. Please see the remainder of this catalogue for expansion modules and installation equipment.

WGAP864 PANEL ACCESSORIES



Zone Expansion Modules for WGAP864

Part No: WGAP864EXP816 / WGAP864EXP1664

Boards to expand WGAP864 beyond 8 zones. Each board expands 8 zones and each have 8 wired end-of-line supervised zone inputs.

- WGAP864EXP816 - expand to 16 zones using a single board.
- WGAP864EXP1664 - expand beyond 16 zones; 8 zones per board.

Alarm Voice Panel Module for WGAP864

Part No: WGAP864VM

To increase the remote accessibility of your WGAP864 alarm system, you can install the optional WGAP64VM phone adapter.

With this module you can inquire about the status of your alarm system via telephone, and make changes to security settings. The module can also be configured to send alarm notifications to your phone.



Watchguard High Quality 64 Zone LCD Keypad for WGAP864

Part No: WGAP864KP

The large LCD screen displays menus and messages to inform you of your alarm status/any changes you are making. All the alarm system programming is done via the LCD Keypad.

Programmable functions accessed through the keypad include auto-arming, away arming, zone bypassing and setting/changing/allocating user codes.



USB Module for Programming WGAP864 Alarm Panel

Part No: WGAPCABLEUSB

USB module and cable used to program the Watchguard WGAP864 alarm system via a Windows PC. Easily program the panel using a PC in less than 30 seconds.

HARDWIRED ALARM ACCESSORIES

Fully Assembled AC/DC Siren, Strobe and Tamper Switch

Part No: COS

Specifically designed to save alarm installers time and money, this product combines a dual power AC/DC high powered siren, high visibility blue strobe light and tamper switch. It is housed in a moisture and UV resistant attractive industry standard external casing and all cabling is pre-terminated.

- Suits All Alarm Control Panels
- No Assembly Required - Saves Time & Money on Installation
- Highly Durable, Moisture & UV Resistant External Housing
- Includes Rear Protective Cover



Universal Movement Sensor with Dual Technology

Part No: PIRHWDT

- Detects Human Movement Up To 12m Away
- Auto Temperature Compensation Reducing False Alarm
- White Light Immunity Level Over 20,000 Lux
- LED ON/OFF Optional, Pulse Count Optional
- NC / NO Optional for Different Alarm Panels
- Auto Developed LEN Technology
- High EM and RF Interference Immunity

Model No: PIRLHLB



Universal Movement Sensor with Triple Technology

Part No: PIRHWTT

- Detects Human Movement Up To 12m Away
- High Quality Quad Element PIR Sensor
- Adjustable Microwave Sensor
- Auto Temperature Compensation
- Selectable N.O. or N.C. Alarm Outputs
- 3 Indicator LED's Green PIR, Yellow MWAVE, Red ALARM
- Selectable Detection LED Indicator ON / OFF
- N.C. Case Tamper Switch

Model No: PIRLHLB



Flush Mounted Internal Siren

Part No: DPSF

- Emits a High Frequency Oscillating Siren Intolerable to the Human Ear
- Low Profile Design to Mount Flush with Ceiling
- Repel Intruders from your Building



Single Tone Siren

Part No: S42

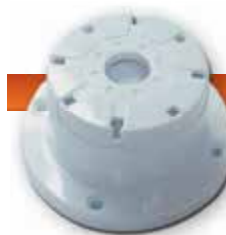
- 115dB Single Tone Siren
- Typically Used with Control Panels with No Internal Siren Driver
- Power: 12VDC



Compact External Siren with Strobe

Part No: W24SIREN

European style 115dB external siren with integrated blue strobe light, piezo siren and tamper switch. The siren utilises a simple 2-wire connection and 12V power.



Indoor Piezo Siren

Part No: DPS

Repel an intruder from your home by installing this high frequency, super loud siren.

- Connect to the Negative On Alarm output on your Alarm System
- Dimensions: 85(W) x 89(D) x 41(H) mm



Photoelectric Hardwired Smoke Detector

Part No: SMODET15P

- Sensor Type: Infrared Photoelectric Diode
- Dust and Insect Proof
- Detection Range 20m²
- 12VDC



Flashing Blue Strobe Light

Part No: DSBM

- Low Profile Blue Strobe Light
- Designed for Use with External Sirens
- LED Strobe



Emergency Button Switch

Part No: DEBS

- On Press Instantly Trigger the Alarm
- N/C & N/O contacts
- Slimline design
- Dimensions: 23(W) x 76(H) x 15(D)mm



Dual Button Emergency Switch (N/O Contact)

Part No: DEBSDUAL

- Dual Button Activation Virtually Eliminates Accidental Triggering
- Push to Close Momentary Contact Type
- Pre-wired for Quick Installation
- Sturdy Metal Case with Silver-plated Contacts
- Rated 1Amp at 25VDC



Large Surface Mount Reed Switch

Part No: DSRHDW

- Surface Mounted Reed Switch
- Industry Standard
- N/C Contact with Solder Terminals
- Dimensions in Millimetres
Reed: 90(W) x 13(H) x 12(D)
Magnet: 90(W) x 13(H) x 12(D)



High Impact Plastic External Siren Cover

Part No: DPSCY

- This External Siren Cover has been developed and designed as a replacement for old or damaged siren covers.
- Highly Durable
 - Moisture and UV Resistant
 - Designed in Australia



Mini Surface Mount Reed Switch

Part No: DSRLW

- Compact Design Surface Mount
- Industry Standard
- N/C Contacts
- Dimensions in Millimetres
Reed - 63(W) x 12(H) x 20(D)
Magnet - 63(W) x 12(H) x 11(D)



Dual Technology Glass Break Detector

Part No: SHARD

- 8m Radius Coverage
- Automatic Ranging
- Electronic Failure Trouble Indicator
- Communicator Output on Trouble
- Alarm Memory LED



Roller Shutter Reed Switch

Part No: DRSR

- Strong Heavy Duty Cast Housing
- Termination Contacts via a Stainless Steel Flexible Conduit
- N/C Contacts



N/C Tamper Switch for Siren Covers

Part No: DTBS

- Open Type
- 1A / 125V
- For Siren Covers such as the DPSCY Which Do Not have a Tamper Switch



Concealed Reed Switch

Part No: DCRW

- Perfect for Mounting in the Tops of Doors or Hidden Areas
- Easy "Push-in" Installation
- Compact Design
- Dimensions: Ø11 x 32(D)mm
- Colour: White



12V 15A Universal Switching Relay

Part No: REL01LOOM

This is a 12V 15A Contact Rated Universal Switching Relay. The relay is contact closed when power is applied.



Surface Reed Switch (N/O Contact)

Part No: DSRNONC

High quality Magnetic Surface Reed switch which has Normally Closed/ Normally Open Contacts.



On/Off Key Switch

Part No: 2POSSPST

An On/Off key switch with 2 keys used for various applications. 2 positions, single pole, single throw changeover switch.

WATCHGUARD DIGITAL ALL IN ONE WIRELESS ALARM SYSTEMS

The Watchguard™ Digital Series is a true revolution in monitored back to base alarm systems. Utilising a compact main control unit with in-built communication dialer and advanced wireless component technology means installation is very simple. The wireless design allows you to expand or relocate any of the systems at anytime. They are truly “plug & secure” systems, without any complicated programming or cabling. See below and over page for full system features, operation and expansion details. Remote programming software download available.

Main Features of the Watchguard Digital Series:

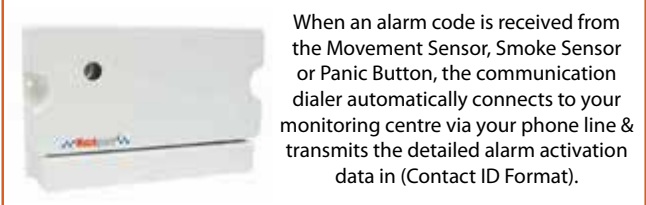
- Expandable Up to 8 Individual Zones
- Easy to Install & Operate
- Around the Clock 24hr Protection
- Connects to Existing Phone Line
- Automatically Communicates with Back to Base Monitoring Centres
- Contact ID Protocol

How Does the Watchguard Digital Series Work?

1) An Alarm Event is Triggered



2) Communication Dialer Transmits to Monitoring Centre



3) Monitoring Centre Acknowledges and Processes Event



4) Personal Notification of Event by Monitoring Centre



Professional Back to Base Monitored Wireless Alarm System for Home & Office

Part No: WGDIGITAL

The WGDIGITAL is a high-quality, anti-intruder professional grade monitored security system. Once installed, simply use the remote control button to arm the system before you leave your premises. If movement is detected after the system has been armed, the communication dialer will transmit the detailed alarm activation data (Contact ID Format) via phone line to your monitoring centre for appropriate response action to be taken.

WGDIGITAL Includes:

- 1x Main Control Unit - Communication Dialer
- 2x Wireless Movement Sensors - Designed to detect the body movement of an intruder inside your premises.
- 2x Code Hopping Remote Controls - Allows you to easily arm and disarm the system or activate the panic facility from virtually anywhere around your premises.
- 1x Power Supply & 1 x Phone Connection Lead - Contact ID Protocol



Professional Back to Base Monitored Wireless Fire Detection System for Home & Office

Part No: WGSMOKE

The WGSMOKE is a high-quality, monitored wireless fire detection system which is quick and easy to install and operate. When smoke is detected not only will the smoke sensor's in-built siren sound, but the alarm siren built into the main control unit will also sound in unison. The communication dialer will transmit the detailed alarm activation data (Contact ID Format) via phone line to your monitoring centre for appropriate response action to be taken.

WGSMOKE Includes:

- 1x Main Control Unit - Communication Dialer
- 2x Wireless Smoke Sensors - AS/NZS 3786:1993. Designed to detect the presence of smoke inside your premises using gas ionisation technology. In-built siren & low battery warning.
- 1x Power Supply & 1x Phone Connection Lead - Contact ID Protocol



Professional Back to Base Monitored Wireless Emergency Duress System

Part No: WGEDS

The WGEDS is a system which in the case of emergency or duress is manually activated by pressing the wireless panic button to alert your monitoring centre. Once a button is pressed detailed alarm activation data in (Contact ID Format) is immediately sent via your phone line to your monitoring centre for appropriate response action to be taken. Up to 8 individual emergency buttons can be used with your Watchguard Emergency Duress System and each button can be individually identified by the monitoring centre (i.e. Grandma's button, Grandpa's button...etc).

WGEDS Includes:

- 1x Main Control Unit - Communication Dialer
- 2x Wireless Emergency Panic Buttons - Designed with the elderly or less-able bodied person in mind. Large rubber button. Nylon lanyard included. Splashproof. Dipswitch coding. Operating range up to 100m (line of sight)
- 1x Power Supply & 1x Phone Connection Lead - Contact ID Protocol



CONTROL ALARM
VIA SMS MSG

REPORTS VIA
SMS TEXT



Watchguard SMS2010 Wireless Alarm System with 2-Way SMS Messaging

Part No: WGSMS2010

The Watchguard SMS 2010 is a true revolution in monitored home & mobile security systems. Designed specifically for simple installation and maximum protection at an affordable price, the WGSMS2010 can be used across a range of applications, including caravans, boats, building sites or anywhere where a portable, self-monitored alarm is required.

Utilising the latest in GSM communication and wireless alarm technology, the Watchguard SMS 2010 communicates to your mobile via a GSM mobile phone network. A SIM Card enables 2-way communication via SMS text messaging between you and your alarm.

The WGSMS2010 is also easy to install. After mounting the movement detectors in the zones to be monitored and mounting the external siren in a prominent position, simply plug the alarm module into the power pack (or connect 12VDC), turn the power key to on and you are ready to go.

WGSMS2010 Includes:

- 1x 8 Zone Alarm Controller Unit with Built-in Quad Band GSM Modem
- 2x Wireless PIR Movement Sensors
- 2x 2 Button Code Hopping Remote Controls
- 1x 12VDC Power Supply for the Alarm Controller Unit
- 1x Compact External Siren with Strobe

*SIM Card and mobile phone not included in package.

How Does the WGSMS2010 Work?



1) Arming the Premises

Use your Remote Control to arm the Watchguard Wireless Alarm System to secure your premises. The WGSMS2010 is ideal for home, office, marine and caravan/RV use.

When body movement is detected in the premises, the sensors will send a message to the alarm module.



2) Alarm Event / Signal Sent to Module

The alarm module or controller is the brain of the alarm system. When it receives the message from the Wireless Movement Sensors, it automatically sends your reported alarm to your designated mobile(s) as an SMS.

The internal siren will also sound, helping repel the intruder.



3) Detailed Alarm Notification

The alarm module communicates to your mobile phone via GSM. When triggered, the module sends a detailed SMS of the reported alarm to your designated mobile(s).

A voice message may also be sent to a landline telephone, where supported. Up to 5 people can be notified.



Watchguard Wireless Home or Office Alarm System

Part No: WGUARD

The Watchguard alarm is a complete stand-alone security system, which is ideal for the home or business owner wanting an affordable security system without a monitoring service. It is very reliable and extremely easy to install and operate. If the alarm is triggered, both the external and internal sirens will sound to repel intruders.

WGUARD Includes:

- Feature Packed 8 Zone Security System
- Can be Expanded using the Range of Watchguard Wireless Accessories
- 2x Quality Wireless Passive Infrared Detectors
- 2x High Security Code Hopping Remote Controls with Lithium Batteries

- Emergency Panic Function via Remote Control
- Backup Battery & Mains Power Adapter
- Powerful External Siren with Flashing Blue Strobe
- Similar Appearance to Security Industry Standard Alarm Systems
- High Frequency Internal Siren to Repel Intruders



Watchguard Fire & Theft Complete Burglary & Fire Detection System for Home & Office

Part No: WGUARDFT

The Watchguard Fire & Theft is a complete burglary and fire detection system suitable for your home or office. When the system detects the body movement of an intruder, or senses smoke inside your building, the alarm will activate both the internal siren as well as the external siren with flashing blue strobe. The system is very easy to use and install.

WGUARDFT Includes:

- Feature Packed Security System with Simple Wireless Installation
- 2x Wireless PIR Sensor / 2x Code Hopping Remote Controls
- 1x AS3786 Approved Wireless Gas Ionisation Smoke Sensor
- Can be Expanded using the Range of Watchguard Wireless Accessories

- High Frequency Internal Siren to Repel Intruders
- Emergency Panic Function via Remote
- Backup Battery & Mains Power Adapter
- Powerful External Siren with Flashing Blue Strobe



Watchguard Basic Wireless Home Alarm System

Part No: WGSENTINEL

This is an Entry Level Wireless Alarm System designed for use in a residential setting where the owner is wanting a basic security system without external monitoring. The kit can be installed in three easy steps: 1) Mount the siren in a suitable position & plug in power; 2) Mount wireless detector; 3) Press the remote to arm/disarm the system.

WGSENTINEL Includes:

- 2x Remote Controls to Arm/Disarm the Alarm and Panic Function
- 1x Wireless PIR Sensor to Detect Movement Up to 12m

- 1x Powerful Outdoor Siren/Strobe to Deter Intruders
- Can be Expanded using the Range of Watchguard Wireless Accessories

UNIVERSAL TRANSMITTERS & RECEIVERS



4 Channel Multi-Function Receiver/Transmitter Set - 433.92MHz

Part No: RXPROR4

The RXPROR4 is an advanced multi-purpose 4-channel narrow-band UHF receiver / transmitter set with fully programmable relay outputs (1 amp rating). It is supplied as standard with 2 x code hopping, 4 button remote controls with long life lithium batteries. It can be used to add Watchguard wireless alarm accessories to virtually any alarm panel or device.

RXPROR4 Features:

- Up to 200m Radio Frequency Range (Line of Sight)
- All Outputs are Individually Programmable to Suit Almost Any Application (Momentary, Latched, Timed or Pulsed)
- Up to 5 High Security Code Hopping Remotes (Anti-scan, Anti-code Grabbing)
- Power Supply Requirement: 12VDC @ 500mA
- Compatible with Watchguard Wireless Alarm Detectors
- Supports Use of Up to 4 Wireless Detectors
- Supports Detector Low Battery, Supervision & Tamper Signal Outputs
- Step by Step Programming via Remote Control & Indication via Feature and Channel LEDs

Suitable for Use in Following Applications:

- With Home Security or Electric Gate/Garages
- Most Devices that Allow Remote On/Off
- Replace Old, Large & Low Security Remotes
- Add Wireless Alarm Sensors to Any Device



Part No: RCX4



RCX4 Comes with 2x 4 Button Remote Controls

Suitable for Use in Following Applications:

- Vehicle Central Locking Systems
- Replace Old, Large & Low Security Remotes
- With Home Security or Electric Gate/Garages

2 Channel Transmitter/Receiver Set - 433.92MHz

Part No: RCX / RCX4

This product is designed to be simple and easy to use. It has simple wiring connections and can be used in a variety of applications. Primarily, this product can be used to remote control your car, garage door, home alarm system, or your electric gate. The number of items to which you can interface is almost endless. Also available in 4 Channel Model (RCX4) with 2x 4 button code hopping remotes.

RCX / RCX4 Features:

- 1 Second (momentary) Negative Outputs for Each Channel
- Separate Latched Negative Output for Channel 1
- Flashing 12V LED Output for Channel 1 i.e.- Flashes when the Button is Pressed, Stops when Pressed Again
- 2x Dual Button Code Hopping Remotes - 100m RF Range (line of sight)
- Can Store Up to 15 Remote Controls in Total



Universal Transmitter/Receiver Set for Alarm Control Panels - 433.92Mhz

Part No: KISSRX

This 8 Channel wireless narrow-band UHF 433.92MHz receiver / transmitter set will allow you to add remote on/off & panic functions to your alarm panel. It will also allow you to add up to 4 wireless sensors to your existing hardwired alarm panel. The unit is supplied with 2 x remote controls which have an operating range of approximately 100 metres (line of sight - subject to environmental conditions).

KISSRX Features:

- 1 Second (momentary) Negative Outputs for Each Channel
- Separate Latched Negative Output for Channel 1
- Flashing 12V LED Output for Channel 1 i.e.- Flashes when the Button is Pressed, Stops when Pressed Again
- 2x Dual Button Code Hopping Remotes - 100m RF Range (line of sight)
- Can Store Up to 15 Remote Controls in Total

Suitable for Use with these Wireless Accessories:

- PIR Movement Sensors
- Panic/Duress Buttons
- Smoke Detectors
- Magnetic Reed Switches



**Wireless Supervised
Passive Infrared Detector**

Part No: PIRW3

- Dual Edge™ PIR Sensor Technology
- 12m Detection Range
- Compact & Elegant Design
- Swivel Bracket for Easy Installation
- Intelligent Power Saving Mode
- Up to 3 Years Life from 1x CR2450 Lithium Battery
- Selectable Pulse Count



**Wireless Supervised Reed
Switch/Universal Transmitter**

Part No: WREEDI

- Used on Doors and Windows
- Also Features In-built Terminals for Use as Universal Transmitter
- Up to 5 Years Life from 2x CR2450 Lithium Batteries



**Wireless Supervised Smoke
Detector AS/NZS 3786:1993**

Part No: SMODETW

- Used on Doors and Windows
- Also Features In-built Terminals for Use as Universal Transmitter
- Up to 5 Years Life from 2x CR2450 Lithium Batteries



**Wireless Supervised PIR
Detector (Outdoor)**

Part No: PIRWOD

- Sealed UV Resistant Outdoor Housing
- 4 Selectable Coverage Patterns:
Wide Angle 10m / Curtain 10m /
Long Range 20m / Vertical Curtain 3m
- 9V Alkaline Battery Provides Approx.
1 Year Life
- Communicates Alarm, Low Battery
& Supervision Signals
- Works with All Watchguard Universal
Receivers & Alarms
- High Quality TAKEX Sensor
- Made in Japan



**Personal Emergency /
Panic Pendant**

Part No: WPANIC

- Standards Compliant Panic Button
- Two Internal Switch Design
- Designed with the Elderly or Less-able
Bodied Person in Mind
- Large Easy Push Rubber Button
- Nylon Lanyard Included Allows it to be
Worn Safely Around the Neck
- Dip-switch Coding
- Splash-proof Construction



Wireless External Siren

Part No: WSIREN

- Wireless External Siren with Flashing
Blue Strobe and Backup Battery
- 10m of Cabling Pre-terminated for
'Plug & Secure' Installation
- Includes Low Voltage Plug-pack
- Sends Tamper, Low battery &
Supervision Signals



**Wireless Solar Siren and
Optional Universal Transmitter**

Part No: WSSOL

- No Cables Required
- In-built Solar Panel to Charge Battery
- 40 Days of Continuous Operation
Without Sunlight Once Charged
- Incorporates Powerful 105dB/M Siren
and Blue Strobe Light
- High Capacity 6V 1.2Ah Sealed Acid
Rechargeable Internal Battery
- Tough Polycarbonate Housing
- In-built Tamper Switch to Activate
Siren in Case of Unauthorised Removal
- Polycarbonate Weatherproof Housing
- Can be Fitted with Universal
Transmitter WSUTX (left) to be
Compatible with Any Wireless Panel
- WSUTX Simply Connects to Siren
Output on your Control Panel

**Model:
WSUTX**



**White Wireless Mini
Numeric Keypad**

Part No: WKP

- Allows Arm/Disarm, Home Mode &
Panic Functions
- Backlit Rubber Buttons
- Only 45 x 55 mm
- Code Hopping Technology
- Wall Mount or Portable
- Selectable 4 Digit PIN Number



**Large Wireless
Numeric Keypad**

Part No: WKPL

- Large Conventional Size Wall Mount
Keypad with Flip-down Front Cover
- Allows Arm/Disarm of your System
via User 4-Digit PIN Code
- 9V Battery Powered
- Low Battery Indicator
- Back Lit Keypad for Night Use
- Weather Resistant for Indoor or
Outdoor Use (Under cover)
- For Use on WGDIGITAL Only



**Wireless Emergency Duress
Mushroom Button**

Part No: MBTX

- Large Industrial Grade Switch
- In-built fixed code transmitter
- LED indicators for Activation and
Low Battery
- Optional External Power Supply



Outdoor Replica CCTV Camera with Housing

Part No: VSCD420F

- Replica CCTV Camera with Weatherproof Housing & Warning Stickers
- Includes Red Flashing LED (Requires 2x AA Batteries)
- Tilt/Swivel Bracket / All Installation Materials Included
- Comes in Professional Retail Packaging



Indoor Replica CCTV Dome Camera

Part No: VSCDDF

- Replica Dome Camera with High Visibility Warning Stickers
- Includes Red Flashing LED (Requires 2x AAA Batteries)
- Packaged with All Installation Materials
- Comes in Professional Retail Packaging



Indoor/Outdoor Replica Infrared CCTV Camera

Part No: VSCD50F

- Replica Weatherproof Bullet Camera with Warning Stickers
- Includes Red Flashing LED (Requires 2x AA Batteries)
- Tilt/Swivel Bracket / All Installation Materials Included
- Comes in Professional Retail Packaging



Indoor Replica CCTV Camera

Part No: VSCDFF

- Replica Full Body Camera with High Visibility Warning Stickers
- Includes Red Flashing LED (Requires 2x AAA Batteries)
- Packaged with All Installation Materials
- Comes in Professional Retail Packaging



Replica Home Alarm Kit

Part No: DUMMYHA

- Simple Installation Imitation Home Alarm Kit
- Realistic Appearance Outdoor Siren/Strobe Deters Criminals
- Includes UV-Resistant Warning Labels and Installation Materials
- Comes in Professional Retail Packaging



STAND ALONE WATCHGUARD SECURITY PRODUCTS

ULTRA LOUD SIREN 110 DECIBEL



110dB Siren Alarm Padlock

Part No: WGALPAD



When armed, the Watchguard Security Alarm Padlock emits an ultra-loud ear-piercing sound upon detecting movement or shock. This increases the chances of scaring away thieves and protecting your valuables.

The padlock features a 110db internal siren which sounds if the lock is moved, touched or knocked after it has been armed. The padlock has been manufactured to the highest standards, with a stainless steel shackle and hardened zinc alloy body. The body of the padlock has been powder-coated providing extra corrosion, water and weather resistance.

The versatility of the padlock make it suitable for use in any number of applications, including garden sheds, gates, garages, lock-boxes, bikes, toolboxes, trailers, caravans, lawn mowers and garden machinery.



12 Megapixel Hunting Camera

Part No: VSHUNTINGCAM



The VSHUNTINGCAM is a hunting, game or trail camera designed to be a scouting device. The camera features an array of different methods for detecting and viewing your subject. The camera is triggered by the passive infrared sensors that detect sudden changes in ambient temperature caused by moving wildlife/game. The camera then automatically takes pictures or records video clips.

The unique design of the VSHUNTINGCAM allows you to strap it to a tree for optimum positioning whilst the camouflaged case allows for discreet operation. The unit comes with a magnet key to activate a laser that assists in focusing the camera.

The VSHUNTINGCAM features a 12 Megapixel camera that captures 3000 x 4000px stills / 720p video, up to 8 months standby time (with 8x AA batteries), SDHC storage (up to 32GB), TV jack and mini-USB outputs, date and time-stamping features, time-lapse control and password protection. **Batteries and SDHC memory card not included.**



Stand Alone Photoelectric Smoke Alarm

Part No: WG1SMKP

Sensor Triggers on detecting visible smoke using light sensor and LED.
 • Built-in Test Button and Battery Missing Indicator
 • Extra Loud Alarm (Sound over 85dB)



4 Pack A4 Alarm Warning Stickers

Part No: VSCDSA

• Contains 4x A4 Sized Alarm Warning Stickers
 • 2x Rear Adhesive for Flat Surface Use
 • 2x Front Adhesive for Interior Window Use

PAXTON NET2 ACCESS CONTROL SYSTEMS



Paxton Net2 Plus Single Door Networkable Access Control Unit (Wired)

Part No: PXT682531

The Paxton Net2 is an advanced PC based access control system. It has easy to use, intuitive software which allows users to be added quickly to the system. The system can generate access reports at the click of a button. The door control units are networked and have been designed to be simple to install and configure. **Can also be configured to interface with the WGAP864 panel.**

The Net2 Plus control unit connects to the central administration PC using an RJ45 plug into a standard TCP/IP Ethernet network. This greatly increases the flexibility of installation options on sites that have LAN/WAN networks. The Net2 Plus control unit also has a RS485 connection. This means it can be connected to other Net2 plus control units using a dedicated CAT5 cable.

One Net2 Plus control unit can be the network interface to the LAN and also run a wired RS485 daisy chain of other Net2 plus units, removing the need for an independent TCP/IP to RS485 converter. ***Battery not included.**

- 1. Computer
- 2. Keyfob/Card Programmer
- 3. LAN/WAN Connection
- 4. Exit Button E38
- 5. Electric Door Latch Release
- 6. Net2 Plus Cabinet with 2A PSU
- 7. Proximity Keypad KP75
- 8. Proximity Keyfob

| Specifications: PXT682531 | |
|--|-----------------|
| Number of Cards / PINs | 50,000 |
| Number of Time Zones | 64 |
| Number of Access Levels | 250 |
| Maximum Door Open Time (sec) | 1~99,999 |
| Doors Per Access Control Unit | 1 |
| Readers / Keypad Per Port | 2 |
| Access Control Unit Per Data Line | 200 |
| Data Lines Per PC | 100 |
| Data Retention After Power Loss | Minimum 28 Days |
| Events Storage Capacity With Server Loss | 2,454 |
| Ethernet Network Speed | 10~100 Mbps |
| Ethernet Bandwidth Requirement | 200 Kbps |
| RS485 Network Speed | 115.2 Kbps |
| Voltage | 15V DC |
| Operating Temperature | 0°C ~ +55°C |



Paxton Net2 Nano Wireless Encrypted Access Control Unit (Wireless)

Part No: PXT654549

An easy to install access control unit using secure wireless communications - the Net2 Nano is a PC based security system for controlling door access. Net2 Nano also allows for access to be granted only at specific times. This networked system allows for all administration to be performed from a central point.

The Net2 Nano communications with Net2 software at a central point by a secure, low power radio link. This means that no cable is required to communicate between doors. This makes the Net2 Nano's installation far more cost effective and less disruptive. In addition, Net2 Nano benefits from unique ease of installation and configuration - no networking knowledge required. ***Battery not included.**

- 1. Computer
- 2. Keyfob/Card Programmer
- 3. Proximity Keyfob
- 4. Proximity Reader P50
- 5. Net2 Nano Cabinet with 2A PSU
- 6. Electric Door Latch Release
- 7. Exit Button E38
- 8. Net2Air USB Bridge

| Specifications: PXT654549 | |
|--------------------------------------|----------------------|
| Total Number of Users | 10,000 |
| Total Number of Doors | Max. 200 |
| Doors Per Access Control Unit (ACU) | 1 |
| Maximum ACUs Per Bridge | 10 (Recommended) |
| Number of Tokens / PINs | 10,000 |
| Number of Time Zones | 64 |
| Number of Time Slots | 2,000 |
| Number of Access Levels | 250 |
| Stored Events Per ACU | 4,096 |
| Data Retention After Power Loss | 60 Days |
| Hands Free Compatibility | Yes (Req. Interface) |
| Maximum Door Open Time (sec) | 1 ~ 999,999 |
| Reader Ports Per ACU | 1 |
| Ethernet Bandwidth Requirement | 100 Kbps |
| Total ACU Reader Port Output Current | 500mA |
| Operating Temperature | 0°C ~ +55°C |

PAXTON NET2 ACCESS CONTROL ACCESSORIES



Proximity P50 Reader

Part No: PXT353110

- IPX7 - Suitable for External Use
- Up to 10,000 Users on 1 Site
- 50W x 100H x 15D mm



Energy Saving Reader

Part No: PXT595248

- Electrical equipment is only switched on when an authorised user card is inserted and retained.



Proximity P200 Reader

Part No: PXT324110

- IPX7 - Suitable for External Use
- Up to 10,000 Users on 1 Site
- Metal Mount
- 200W x 200H x 15D mm



Proximity Vandal Proof Reader

Part No: PXT568855

- IPX7 - Suitable for External Use
- Buried in Wall or Door Frame
- Use in Vandal Prone Areas
- 30W x 60H x 48D mm



Long Range Reader

Part No: PXT313110

- Max. Range: 5m (w/ Handsfree Token)
- Ideal for Car Park Access Points
- Bright LED Visible in Sunlight



Proximity Metal Reader

Part No: PXT390747

- IPX7 - Suitable for External Use
- Supplied Security Screws & Key
- Suitable for Mounting on Metal
- 76W x 76H x 27D mm



Proximity KP75 Keypad

Part No: PXT375110

- IPX7 - Suitable for External Use
- Keypad & Proximity Reader All in One
- Read Range up to 100mm with Proximity Cards



Proximity Panel Mount Reader

Part No: PXT390135

- IPX7 - Suitable for External Use
- For Use in Audio/Video Entry Panels
- 58W x 58H x 17D mm



Proximity Marine Reader

Part No: PXT500010

- IPX7 - Suitable for External
- Marine Grade Stainless Steel
- High Visibility Blue Backlight
- Ø106mm



E50 & Marine Exit Buttons

Part No: PXT593721

- PXT356310 (right) Exit Button
- Marine Button (left)
- Constant Green LED; Flashes When Door is Unlocked



Net2 Proximity Keyfobs

Part No: PXT695644

- Comes in Box of 10 pcs
- Programmed with an 8 Digit Unique Number
- 14W x 40H mm



Hands-Free Keypad/Keyfob

Part No: PXT690333

- PXT690222 (Keyfob)
- Up to 5m Read Range
- Ideal for Gates/Barriers/Loading Doors & Disable/Elderly Access



ISO Cards Pack of 10

Part No: PXT692500

- No Magstripe or Sign Panel
- Envelope size: 120 x 73mm
- Card Size: 86 x 55mm



Hands Free Interface

Part No: PXT477222

- Convert New/Existing Readers or Keypads to Hands Free
- Greatly Increases Read Range
- In Plastic Housing



Desktop Reader USB

Part No: PXT514326

- Sits Next to PC / Adds Tokens
- Can Identify Lost Tokens
- Works Simply Via USB



Net2 USB/RS485 Converter

Part No: PXT455482

- Connects the PC Comport (RS232) to the Net2 Dataline (RS485)
- Suitable for Wall Mounting
- In Plastic Housing



Reader Connectors

Part No: Below - Left to Right

- RJ45 Reader Port Connector Pack of 5 (PXT325030)**
- Remove Screw Terminal Block from the ACU Reader Port and Replace Reader Junction Box (PXT325020)



Paxton Net2Air Range

Part No: Below - Left to Right

- Net2Air Ethernet Bridge (PXT477384)**
- Plugs into Existing LAN/WAN
- Net2Air USB Bridge (PXT477268)**
- Wireless Comm. for PC & Net2 Nano
- Net2Air Site Surveyor (PTX690200)**
- Checks for Signal Strength



The Permaconn range of GSM and Ethernet alarm communicators are renowned for their reliability and ease of installation. They implement the use of dual SIMs for redundancy and feature an audited uptime of 99.9% as per Australian standards. They are an ideal upgrade or replacement for traditional PSTN diallers.



IP Only Alarm Communicator

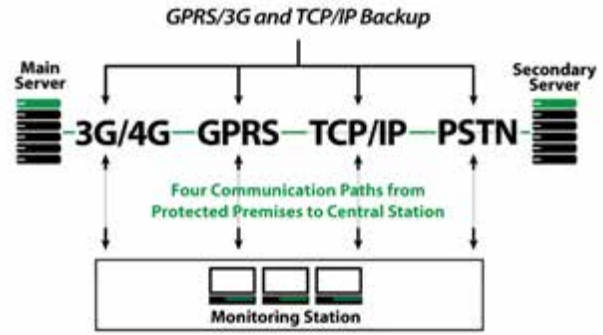
Part No: PM35

This unit can interface with a range of alarm panels using Contact ID. Alarm messages are sent using the clients ISP and are received by any Central Station that has the Permaconn solution installed.

PM35 Features:

- Remote alarm panel Upload/Download available using IP
- Plug & Play IP alarm communicator
- 1 input & 1 output, function control using Atlas and/or Pocket Secure
- Compatible with NBN and Naked DSL services
- Interfaces with any Contact ID alarm panel

| Specifications: PM35 | |
|--------------------------|---|
| Housing Material | White ABS Plastic |
| Dimensions (HxDxW) | 110 x 25 x 80mm |
| Weight | 0.09kg |
| Operating Environment | 0°- 50°C @15% to 85% humidity (non-condensing) |
| Power | 8 - 15V DC. Terminal or plug pack socket available. Plug pack must have approval |
| Power Consumption | 0.15A @13.8V DC |
| Communication Protocol | Ethernet (10/100BASE-T) |
| Network Protocol | DHCP or Static IP |
| Serial Port | High Speed RS232 interface |
| Auxiliary Input | 1 x 24Hr input - state change detected every second. EOL 3.3K |
| Auxiliary Output | 1 x Open collector output @50mA (max) Function control using Atlas web portal and/or 'Pocket Secure' |
| Static IP Network Config | Ethernet interface using IpSetup program |



3G, GPRS and IP Alarm Communicator

Part No: PM45

The PM45 is a versatile alarm communicators that report on GPRS and IP to the Central Station. These communicators can interface with a range of alarm panels using Contact ID. Primary alarm path is IP, followed by GPRS in the event of a wired Ethernet failure. If no IP connection exists, the communicators will report on GPRS only.

PM45 Features:

- Remote alarm panel Upload/Download available using GPRS/IP
- Dual SIM & IP alarm communicator
- Plug & Play solution
- Interfaces with any Contact ID alarm panel
- 1 input & 1 output, function control using Atlas and/or Pocket Secure
- Low cost hardware solution for NBN or Naked DSL services

| Specifications: PM45 | |
|--------------------------|--|
| Housing Material | White ABS Plastic |
| Dimensions (HxDxW) | 110 x 25 x 80mm |
| Weight | 0.12kg |
| Operating Environment | 0°- 50°C @15% to 85% humidity (non-condensing) |
| Antenna Modem | Triple band 3G & Dual band GPRS Cinterion MC-37 or MC-55 |
| Power | 8 - 15V DC. Terminal or plug pack socket available. Plug pack must have approval |
| Power Consumption | Standby: 0.08A @13.8V DC Transmitting: 0.19A @13.8V DC |
| Communication Protocol | Ethernet (10/100BASE-T) |
| Network Protocol | DHCP or Static IP |
| Serial Port | High Speed RS232 interface |
| Auxiliary Input | 1 x 24Hr input - state change detected every second. EOL 3.3K |
| Auxiliary Output | 1 x Open Collector output @ 50mA (max) Function control using Atlas web portal and/or 'Pocket Secure' |
| Static IP Network Config | Ethernet interface using IpSetup program Atlas web portal using GPRS |

VEHICLE SECURITY

Vehicle Security 50

| | |
|----------------------------------|----|
| Car Alarms & Engine Immobilisers | 50 |
| Upgrade Car Alarm Systems | 52 |
| Rhino Engine Immobilisers | 53 |

Vehicle Accessories 54

| | |
|--|----|
| Vehicle Security Equipment & Accessories | 54 |
| Central Locking Kits | 54 |
| Vehicle Sirens | 54 |
| Detectors & Switches | 55 |

In-Vehicle Systems 56

| | |
|--------------------------------------|----|
| RhinoTracks GPS Tracking Service | 56 |
| RhinoTracks Driving Recorder Systems | 56 |
| Specialty Tracking Systems | 57 |
| Mobile Digital Video Recorders | 58 |
| Vehicle Reversing Assistance | 59 |
| Vehicle Reversing Cameras & Monitors | 60 |



Rhino[®]
Vehicle Security

**RhinoTracks**

The RAV3 Series: The Ultimate in Car Security

Three Point Automatic Immobiliser: For maximum security fuel pump, ignition system and starter motor immobiliser cuts (where possible) are made so the car cannot be started unless it is disarmed via the remote. The system will immobilise 40 seconds after the ignition is turned off or when the alarm is armed.

Intelligent Glass Break Sensor: Detects the sound frequency of breaking glass. It will only trigger the alarm if the shock sensor also picks up an impact. This reduces false alarms.

Intelligent Dual Stage Shock Sensor: It gives a warning on a light impact and a full alarm on a heavy impact to the vehicle. It can distinguish between environmental shocks such as trucks or aircraft and a thief attempting to break in. It will auto adjust its sensitivity for the environment on arming.

Data Battery Backup Siren: A self powered siren that communicates independently with the alarm so it cannot be fooled into turning off like normal battery back-up sirens.

Door, Bonnet and Boot Protection & Central Locking: If the alarm is armed and a door, bonnet or boot is opened the alarm will sound. The alarm will lock/unlock the doors when the alarm is armed/disarmed.

Compatibility: The RAV3 and RAV3-PNG is compatible with all Rhino car alarm accessories and sensors. Each unit has a four year warranty and is also available in a 24V version.

Turbo Timer Functions: Specifically to work with turbo vehicles. It has two turbo timer options to choose from. On-board turbo timer – no need to fit an external unit - using the on-board turbo timer is the most secure way to have a turbo timer. The alarm is armed as usual but the car will continue to run for the preset run time of 1, 2 or 4 minutes. If the alarm is triggered during this time the car will shut down and the alarm will sound. It can also be turned off prior to the preset run time via the remote.

Turbo Timer Interface: Link the alarm up with your existing external turbo timer so your car will continue to run on the external turbo timer after the alarm is armed as usual. If the alarm is triggered during this time the car will shut down and the alarm will sound.

Control the Alarm with your Vehicle's Factory Key: If your vehicle has a factory key that locks/unlocks the doors your RAV3 alarm may be able to interface with it so the alarm arms/disarms at the same time. Boot release will also work from the factory key (and if the alarm is armed it will disarm). This feature will work with most factory keys.

Special Courier Functions: Courier function allows the engine to continue running indefinitely while the system is armed. If the alarm is triggered during this time the car will shut down and the alarm will sound.

Two Rolling Code 4 Button Waterproof Remotes: If you are not using your vehicle's factory key to operate the alarm.



Rhino

Australian Standards Approved Car Alarm & Upgrade in One Incl. 3 Point Engine Immobiliser and Glass Break Sensor

Part No: RAV3

The Rhino RAV3 is one of our top quality Australian Standards Approved car alarm. It has been engineered to the highest specifications to give you the ultimate in car security. The main features which have been developed and incorporated into the RAV3 include:

RAV3 Features:

- Three Point Automatic Immobiliser
- Intelligent Glass Break Sensor
- Intelligent Dual Stage Shock Sensor
- Coded Battery Back-Up Siren
- Door, Bonnet and Boot Protection
- Integrated Central Locking Relays
- Turbo Timer Functions
- Alarm Control via Vehicle Factory Key
- Special Features for Courier Drivers

RAV3 Includes:

- 1x ASA 3-Point Engine Immobiliser
- 2x 4 Button Waterproof Rolling Code Remote Controls
- 1x Mini Coded Backup Battery Siren
- 1x Glass Break Sensor



Rhino

Anti-Hijack Car Alarm & Upgrade in One Incl. 3 Point Engine Immobiliser and Glass Break Sensor

Part No: RAV3-PNG

The Rhino RAV3-PNG has all of the features of the standard RAV3 with added ability to detect a carjacking event and immobilise the vehicle.

RAV3-PNG Features:

- Three Point Automatic Immobiliser
- Intelligent Glass Break Sensor
- Intelligent Dual Stage Shock Sensor
- Coded Battery Back-Up Siren
- Door, Bonnet and Boot Protection
- Integrated Central Locking Relays
- Turbo Timer Functions
- Alarm Control via Vehicle Factory Key
- Special Features for Courier Drivers
- Anti-Hijack Features to Prevent Carjacking

RAV3-PNG Includes:

- 1x ASA 3-Point Engine Immobiliser
- 2x 4 Button Waterproof Rolling Code Remote Controls
- 1x Mini Coded Backup Battery Siren
- 1x Glass Break Sensor
- 1x Push Up Button



Rhino

12V Backup Battery Car Alarm with 2 Point Immobiliser

Part No: GTS

The Rhino GTS is a highly featured mid-level car alarm and engine immobiliser. It features code hopping remote technology, a full size backup battery siren and numerous programmable features. The two onboard engine immobilisation relays can be used to cut both your starter motor and fuel pump. **24V Version Available (GTS24V) - Siren is non-battery backup.**

GTS Features:

- 2 Point Engine Immobilisation (on board relays)
- Protects Doors, Boot and Bonnet
- Central Locking Relay Outputs for Keyless Entry
- Backup Battery Siren
- 2 x Code Hopping Remote Controls
- 2 Stage Car Body Impact Sensor

UPGRADE CAR ALARM SYSTEMS



Rhino

Upgrade Car Alarm & Immobiliser with Wireless Keypad

Part No: RAKP

With the RAKP, even if your car keys are stolen, the RAKP can not be disarmed without entering your chosen PIN number. The Rhino RAKP is a variant of the RA Model and is designed primarily for use in modern high theft-risk vehicles with factory remote controls. The inclusion of our special wireless keypad prevents anyone from being able to disarm the alarm and start the vehicle unless they enter the chosen 4 digit PIN number within 20 seconds of opening one of the car doors.

RAKP Features:

- 1x 3 Point Auto Immobiliser: 3 On-Board Circuits
Auto-Activate 38 Seconds After Ignition Off
- Programmable Auto Arming Alarm
- Manual Arming: Arm via Keypad PIN Only
- The Wireless Keypad uses Long Life Lithium Batteries and has Backlit Keys for Night Time Use



Rhino

Transformer Upgrade Alarm System For Vehicles with Factory Keyless Entry

Part No: TRANS

If your vehicle is fitted with a factory remote keyless entry system, and you would prefer not to have a second remote control on your keyring (because your ignition key is part of the factory remote control), then the Rhino Transformer is your system of choice.

Whenever you lock and unlock your vehicle with the factory remote, your Transformer alarm will arm/disarm in turn. The Transformer is simply a variant of the RAV3 system with identical features - except there is no need for remotes. The connection of engine immobilisation circuits (up to 3) in addition to the factory immobiliser is optional, but at least 2 must be connected to meet Australian Standards requirements.

TRANS Features:

- Australian Standards Approved AS/NZ 3749.1 2003
- Three Point Engine Immobilisation (onboard relays)
- All Points of Entry Protection (Doors, Boot, Bonnet)
- 2 Stage Pre-alert Car Body Impact Sensor with ETS
- All Black Wiring Harness
- Alarm Memory (Allows Recall of the 10 Most Recent Alarm Activations in Order)
- Visual Arming and Disarming via Indicators (optional)
- Audio Discriminating Glass Break Sensor
- Backup Battery Siren



Rhino

Transformer SMS Add-On SMS Paging System For Vehicles with an Existing Alarm

Part No: TSMS

The 'Transformer SMS' adds state-of-the-art 2 way GSM mobile phone communication to your existing factory or after-market car alarm system. If you intend to rely on the existing alarm system fitted in your vehicle, this product enables you to be notified on your mobile phone if the alarm is activated. You can also connect to your existing central locking to allow you to unlock your car from your mobile in case you ever lock your keys in your car.

TSMS Features:

- Notification of Factory Alarm Activation via SMS Text Message
- Receive SMS Alerts when Your Car Battery is Low
- Up to 5 people can be Notified Upon Alarm Activation
- Failure to Respond to an SMS Alert Causes the System to Ring the Primary User to Gain Maximum Attention
- 3 Independent Negative Outputs can be Controlled via SMS Message
- These may be Used for Remote Arming or Other Functions such as Opening Electric Gates, Remote Immobilisation, etc.
- SMS Controlled Central Locking Outputs
- GSM SIM Card Required



Rhino

Remote Keyless Entry & Basic Immobiliser System

Part No: RCXI

This product can be used to remote control your existing car central locking and electronic boot release. It has indicator flash outputs and includes a single engine immobilisation circuit. The RCXI can also be used for remote controlling your garage door, home alarm system, or your electric gate.

RAKP Features:

- Adds Remote Control Functions to Existing Key-operated Central Locking
- 2x 2 Button Remote with Code Hopping technology
- Operating Range of Approximately 80 Metres
- Ultra Compact Module: Dimensions (mm): 60(W) x 30(D) x 13(H)
- 1 Second (Momentary) Negative Central Locking Outputs For Each Channel
- Electric boot release output
- Optional Connection to Flashing LED, Engine Immobilisation Relay & Indicators



Rhino

Australian Standards Approved Remote Control 2 Point Engine Immobiliser

Part No: RES4601V2

The Rhino RES Engine Immobiliser is an Australian Standards Approved System and features passive arming, all black wiring and 2 engine immobilisation circuits. It also has a negative on alarm output on door and ignition activation to allow an optional siren to be connected for basic alarm function.

RES4601V2 Features:

- Australian Standards Approved AS/NZ 3749.1 2003
- 2 Point Engine Immobilisation (onboard relays)
- 2x 2 Button Remote with Code Hopping Technology
- Auto Immobilisation (Passive Arming)
- Visual Arming and Disarming Confirmation via Blinkers
- Negative Pulse Central Locking Outputs
- All Black Wiring Harness
- Insurance Approved



Rhino

Australian Standards Approved 12V Remote Control 3 Point Engine Immobiliser

Part No: JAGV3

The Rhino JAG is our top-of-the-range Engine Immobiliser and it's recommended for all high theft-risk vehicles. It is approved to the latest Australian Standard and features 3 onboard engine immobilisation relays plus all black wiring. The additional option of utilising the Rhino wireless keypad means maximum protection for your vehicle. **24V Version Available (Model: JAG24V)**

JAGV3 Features:

- Australian Standards Approved: AS / NZS 4601:1999 / amdt 1:2003
- Insurance Approved Including Specialist Insurers
- Three Point Engine Immobilisation (On-board Relays)
- 2x 4 Button Remotes with Code Hopping Technology
- Auto Immobilisation (Passive Arming)
- On-board Central Locking Relay Outputs
- Optional Wireless Keypad Compatible
- Numerous Programmable Features Including Ability to Upgrade to Full Alarm system

VEHICLE SECURITY EQUIPMENT & ACCESSORIES

CENTRAL LOCKING KITS



Heavy Duty Central Locking Kits

- Part No: CLKHD (4 Door Locking Kit)
- CLKHD2D (2 Door Locking Kit)
- CLKHD24V (24V 4 Door Locking Kit)

Add security and convenience to your car that is not already fitted with central locking. Can be key operated or connected to any car alarm or immobiliser with central locking outputs for remote keyless entry.

This high quality door central locking kit is ideal for use in both modern and older vehicles which require high torque motors for activating stiff door locking mechanisms.

CLKHD Range Includes:

- 1x Control Module with Negative Lock / Unlock Pulse Inputs
- 2x 5 Wire Master Actuator / Door Lock Motors
- 2x 2 Wire Slave Actuator / Door Lock Motors
- Full Wiring Harness & Motor Mounting Hardware



Heavy Duty 5 Wire Central Locking Master Motor

Part No: DLHD101

Individual Central Locking 5-Wire Master Drive Motor



Heavy Duty 2 Wire Central Locking Slave Motor

Part No: DLHD102

Individual Heavy Duty 2-Wire Slave Central Locking Motor



Cable Lock Adapter for Central Locking Kits

Part No: CLKHDCABLE

Use this adapter kit for vehicles fitting with cable-type lock actuators.



VEHICLE SIRENS



Black Cabin Piezo Siren

Part No: DPS

Repel an intruder from the cabin of your vehicle by installing this high frequency, super loud siren under the dash.

- Connect to the Negative on Alarm Output on your Alarm System
- Dimensions: 85W x 89D x 41Hmm



Coded Backup Battery Siren

Part No: BBSCV3

For use with Rhino RAV3 & JAG only. These systems utilise a special data code signal to switch siren on and off.

- All Black Wiring
- Australian Standards Approved
- Power: 12VDC
- Dimensions: 105W x 110D x 80H (mm)



Mini Coded Backup Battery Siren

Part No: MINIBBSCV3

For use with Rhino RAV3 & JAG only. These systems utilise a special data code signal to switch siren on and off.

- All Black Wiring
- Australian Standards Approved
- Power: 12VDC
- Dimensions: 55W x 65D x 72H (mm)



Universal Backup Battery Siren

Part No: SBB

Universal replacement siren for most brands of car alarm. Used in Rhino GTS.

- Colour Wiring Harness
- Negative & Positive Trigger Inputs
- Override Keyswitch
- Dimensions: 105W x 110D x 80H (mm)



Universal Mini Backup Battery Siren

Part No: MINISBB

Universal replacement siren for most brands of car alarm. Used in Rhino GTR and RSA Car Alarms.

- Colour Wiring Harness
- Negative & Positive Trigger Inputs
- Override Keyswitch
- Dimensions: 55W x 65D x 72H (mm)



Single Tone Siren

Part No: S42 / S4224V

- Single tone siren.
- 12VDC and 24VDC Models
- 115dB Single Tone Siren



Ultrasonic Body Movement Sensor

Part No: UD6

For detecting body movement inside the cabin of a hardtop vehicle. Easy to connect to most alarms via negative output trigger wire.

- Ultra Compact Sensors
- Frequency: 40 kHz Crystal Locked
- Adjustable Sensitivity
- Power: 12V DC



Electric Boot Release Motor

Part No: DL105

Add convenience to your car that is not fitted with an electric (push button) type boot / hatch release.



Flush-Mount LED Flashing Light

Part No: FL5

Ultra bright flush-mount red flashing LED light for 'alarm armed' indication.

- Power: 12V DC
- Dimensions: Ø5 mm



Standard Pinswitch

Part No: PIN409

Used to detect the opening of a vehicle bonnet, boot or doors. Adjusted by cutting the pin.



Right Angled Pinswitch

Part No: PIN410

Used to detect the opening of a vehicle bonnet, boot or doors. Adjusted by cutting the pin.



3 Dimension Digital Tilt Sensor

Part No: TILTSENSE2

Designed to help protect your wheels and detect tow away. Detects if your vehicle is tilted by more than a couple of degrees.

- Unaffected by Parking on Slope
- Saves Angle Position on Arming Vehicle
- XYZ Movement Sensing Technology



Metal Pinswitch

Part No: PINSW

Used to detect the opening of a vehicle bonnet, boot or doors. Adjusted via the screw thread.



Automatic Electric Window Lifter

Part No: GLU400

Automatically closes two power windows when your alarm is armed. 2 units are required for a 4 door vehicle.

- Dimensions: 70W x 115D x 27H (mm)



Van Sliding Door Switch

Part No: VANSW

For use when installing central locking on vehicles with sliding doors such as passenger & commercial vans.

- Female Switch: 82W x 34D x 15H (mm)
- Male Switch: 70W x 26D x 52H (mm)



Dual Zone Microwave Detector

Part No: MDDZ

Used to give a warning to anyone coming too close to your vehicle & to trigger the alarm if there is movement inside the cabin. Can be hidden behind non-metallic surfaces.

- Compatible with Most Alarms
- Tri-colour Test LED
- Negative Trigger Output Wires
- Detects Perimeter Approach and Internal Movement
- Dimensions: 83W x 80D x 20H (mm)



40 Amp 5 Pin Changeover Relay

Part No: 40ARELAY / 40ARELAY-24

Commonly used for adding engine immobilisation circuits and connecting electric boot release motors to your system.

Also used for central locking interfacing when vehicle does not have regular negative pulse inputs and your alarm / immobiliser also does not already have onboard central locking relays.



2 Stage Vehicle Impact Sensor

Part No: SHOCK2S

Designed to detect any shocks or impacts to your vehicle. The 2 stage system provides a warning alert if a light impact is detected, and outputs to the alarm if a heavy impact is registered.

- 2 Stage for More Accurate Detection
- Pre-wired Female Plug
- Adjustable Sensitivity & LED Test Indicator



Differential Pressure Sensor

Part No: PRESSENSE

The differential pressure sensor detects minute or major changes in the internal pressure of a car; when the alarm is armed, the sensor uses the internal pressure as a baseline. Any changes to this pressure - like breaking a window or prying open a door - result in the sensor detecting the change and triggering the alarm.

- High and Low Frequency Tuners

GPS TRACKING & DRIVING RECORDER SYSTEMS



Have you ever needed to know where your vehicle is? Where it has been? How fast it was travelling? View live tracking updates and recorded travel histories with any of the RhinoTracks range. You can use the RhinoTracks GPS service across a multitude of applications including vehicle monitoring, fleet management, anti-theft purposes and real-time tracking.

Visit www.rhinotracks.com.au for a demonstration of the RhinoTracks Service

| Date / Time | Coordinate | Speed |
|---------------------|--------------------|------------|
| 2013-01-21 13:21:55 | -33.9449, 151.2353 | 0.00 km/h |
| 2013-01-21 13:22:14 | | 0.00 km/h |
| 2013-01-21 13:22:34 | | 14.00 km/h |
| 2013-01-21 13:22:54 | | 14.00 km/h |
| 2013-01-21 13:23:09 | | 0.00 km/h |

For a Demonstration of RhinoTracks Service Visit: www.rhinotracks.com.au

Standard RhinoTracks GPS Vehicle Tracking
Part No: RHINOTRACKS-ST3

The RHINOTRACKS-ST3 is our standard GPS Vehicle Tracker, designed to keep you informed of where your vehicle is and where it has been. The system includes standard GPS tracking functions and comes with GPRS and GPS antenna. The RHINOTRACKS-ST3 is suitable for 12V and 24V DC Vehicles.

When coupled with our RhinoTracks Service, the system supports numerous GPS applications including:

- Vehicle Location, Remote Monitoring and Remote Navigation
- Provides Accident and Travel History Records
- Fleet Management
- Real-time Tracking
- 4G Compatible

* RhinoTracks tracking service fees apply. Fee is charged quarterly in advance at time of purchase.
(Fee incurred from mobile network service charges only)

* Google Maps and Street View are trademarks of Google Inc. The download and use are subject to applicable terms and conditions of Google Inc. RhinoCo Technology is in no way affiliated or associated with Google Inc. or any of its subsidiaries.

** RhinoTracks GPS products require your vehicle is located within selected mobile phone network carrier's GSM coverage, that GPS satellites are operational and that the vehicle is not undercover. RhinoTracks service fees are charged quarterly in advance at time of purchase.



Available on Special Request

Mini Tracker for Container or Covert Tracking

Part No: RHINOTRACKS-CTS

This compact GPS unit includes the standard GPS tracking functions and is powered by an inbuilt 3.6V Lithium battery, with a standby operation time of more than 12 days. The system has been designed to be mounted on the back doors of a truck or container.

The RHINOTRACKS-CTS has built-in GPS and GSM antennas and has both a motion sensor and magnetic door sensor, to easily detect the status of the container doors. The unit housing has a strong magnetic backing, which makes for simple installation and it includes a tamper switch (with trigger reporting) on the main unit for added protection against vandals.



Available on Special Request

Stand Alone GPS/GPRS/SMS Solar Panel Tracker

Part No: RHINOTRACKS-SPT

The Solar Powered GPS Tracking System is an ideal product for use in logistics applications such as on top of a truck or container. The internal battery is charged by the large photovoltaic Solar Panel, removing the need for an external power source.

The unit includes the basic GPS tracking functions, allowing you to locate your vehicle from anywhere in the world where you have an internet connection. The built-in GPS and GSM antenna remove the need for external devices, and the unit's tamper switch (with trigger reporting) provides added protection against vandals.



Available on Special Request

Wind Power Tracking System with Built in GPS/GSM Antenna

Part No: RHINOTRACKS-WPT

This unique wind powered GPS tracking system utilises an independent wind power generator to charge and power the unit, removing the need to connect an external power supply.

This makes the product ideal for mounting on the top of a trailer, truck or container, where it is out of sight from vandals and in a prominent position to capture the wind.



In-vehicle Camera and Recorder with 720p Resolution

Part No: MDVR-HDV5

- H.264 Video Compression
- 2.5" TFT Colour Montior
- Build-in Microphone
- Camera Lens 120°
- 6x IR LED For Night Vision
- Recording Resolutions of:
 - 1280 x 960
 - 720 x 480
 - 640 x 480
- 4GB SD Card Included (Max.Capacity 32GB)
- USB Output
- Time and Date stamp on video and image files
- Continuous recording, old files will automatically overwritten

MDVR-HDV5 includes:

- 1 x In-vehicle DVR
- 1 x USB cable
- 1 x 4GB SD card
- 1 x Windshield bracket
- 1 x Car charger
- 1 x User manual

| | |
|------------------|--|
| Camera | 1 x CMOS Image Sensor |
| Video Resolution | 1280x960/ 640x480/ 320x240 |
| Audio | Internal Microphone |
| Memory | Supplied with 4GB SD Card, Maximum Memory 32GB |
| Power | 5VDC |



Single Camera HD Mobile Digital Video Recorder

Part No: MDVR-HDV6

- H.264 Video Compression
- 2.7" TFT Colour Montior
- 3.0 Megapixel Camera
- Camera Lens 120°
- Recording Resolutions of:
 - 1920 x 1080 @ 30fps
 - 1280 x 720 @ 60fps
- 4GB MicroSD Card Included (Max.Capacity 32GB)
- HDMI & USB Output
- Continuous recording, old files will automatically overwritten
- Time and Date stamp on video and image files

MDVR-HDV6 includes:

- 1 x In-vehicle DVR
- 1 x USB cable
- 1 x Car charger
- 1 x 4GB MicroSD card
- 1 x Windshield bracket
- 1 x User manual
- 1 x HDMI Cable

| | |
|------------------|---|
| Camera | 3.0 Megapixel |
| Video Resolution | 1920x1080, 1280x720 |
| Audio | Internal Microphone |
| Memory | Supplied with 4GB MicroSD Card, Maximum Memory 32GB |
| Power | 5VDC |



RECORD ALL CHANNELS
D1@25FPS

Full D1 Recording 4 Channel Mobile Digital Video Recorder with GPS Receiver

Part No: MDVR-GPSV3

The Rhino 4 Channel Vehicle Mobile Digital Recorder with GPS Receiving Unit is the ideal product for a number of applications, including monitoring driver behaviour; providing video evidence in the event of an accident; proving deliveries have been made; and GPS vehicle tracking on playback.

- Mobile DVR Supports Up to 4 Cameras
- Full Time Channel D1 (704 x 576) Real-time (25fps) Recording
- VGA / Composite Simultaneous Video Output
- Full Channel Synchronous Real-time Playback
- Remote Viewing and Multiple Network Monitoring
- Supports 1x SATA HDD and 2x USB 2.0 Ports
- Built-in High Accuracy GPS Module
- Power Supply: 12V / 24V

The unit includes an A/V Input loom to allow you to connect up to 4 cameras to the device (For recording views such as front view, rear view, driver view, passenger/cargo view). The recorded footage is stored on the removable 2.5" Hard Drive, and can be backed up via USB.

* Hard Drive Not Included

Add-on 3G module available (Model No: MDVR-GPSV3-3G)

VEHICLE REVERSING ASSISTANCE



Rearview Mirror with 4.3" TFT-LCD Built-in Monitor & Number Plate Camera Kit

Part No: VSDS-RVM4.3

This kit contains all you need to enable safe reversing with confidence, virtually eliminating blind spots. The Monitor/Mirror simply fastens over your vehicles existing rear view mirror and the camera is mounted above your Number plate. When reverse gear is selected, a colour video image is instantly displayed on the in-built 4.3" TFT LCD screen.

- Video Display Turns On Automatically While Reversing
- Built-in 4.3" Colour TFT-LCD Screen
- Monitor Resolution: 480 x 234 pixels
- Anti-glare Blue Glass Mirror
- Secondary Video Input Available
- Power: 12VDC (10W maximum power consumption)

Camera:

- 8 x Infrared LEDs Offer Enhanced Night Time Operation
- Easily Mounts Above your Number Plate
- 110° Horizontal Viewing Angle
- Power" 12VDC 200mA



4 Sensor Reversing Kit with Audible Alert

Part No: REVERSE4B

This device is designed to aid drivers by detecting physical objects when reversing or parking. When reversing, the advanced ultrasonic sensors will detect obstacles within 1.5 metres from the rear of your vehicle.

- Detection Range: 0.2 ~ 1.5m
- 4 x Ultrasonic Sensors - 40KHz
- Digital Control Box
- Speaker for Audible Alert
- 12 Volt DC - 20~200mA

WARNING: Both reversing cameras and parking sensors are designed only as an aid to drivers. They should never be considered as a substitute for normal driver responsibility. Proper driving technique and use of mirrors whilst reversing should always be observed by the driver.

VEHICLE CAMERAS & MONITORS



420TVL Reversing Camera with Adjustable Bracket

Part No: VSDS-ABCAM

- Horizontal Resolution: 420TVL
- Image Sensor: 1/4" CMOS
- Wide Lens Angle: 170°
- IP Rating: IP67 (Waterproof)
- Power: 12VDC



420TVL Flush Mount Reversing Camera

Part No: VSDS-FMCAM

- Horizontal Resolution: 420TVL
- Image Sensor: 1/4" CMOS
- Wide Lens Angle: 170°
- IP Rating: IP67 (Waterproof)
- Power: 12VDC



420TVL Reversing Camera with Fixed Bracket

Part No: VSDS-FBCAM

- Horizontal Resolution: 420TVL
- Image Sensor: 1/4" CMOS
- Wide Lens Angle: 170°
- IP Rating: IP67 (Waterproof)
- Power: 12VDC



420TVL Mini Reversing Camera

Part No: VSDS-MINICAM

- Horizontal Resolution: 420TVL
- Image Sensor: 1/4" CMOS
- Wide Lens Angle: 170°
- IP Rating: IP67 (Waterproof)
- Power: 12VDC



420TVL Flush Mount Reversing Camera with Infrared

Part No: VSDS-BUMPCAM

- Horizontal Resolution: 420TVL
- Image Sensor: 1/3" CMOS
- Wide Lens Angle: 90°
- IP Rating: IP67 (Waterproof)
- 10x Infrared LEDs for Night Use
- Power: 12VDC



Number Plate Mounted Colour Reversing Camera with Infrared LEDs

Part No: VSDS-NPCAMKIT

This Reversing Camera simply mounts above your number plate and once connected to one of Rhino's In-Vehicle LCD Monitors will display a clear colour image.

VSDS-NPCAMKIT Features:

- 8 x Infrared LEDs Offer Enhanced Night Time Operation
- Easily Mounts Above your Number Plate
- 110° Horizontal Viewing Angle
- Power" 12VDC 200mA
- Camera can be Tilted Up and Down to Provide the Best View
- Compatible with Rhino's Full Range of In-vehicle LCD Display Monitors or any other LCD Display



7 Inch LCD Monitor with Stand & Remote Control

Part No: LCD7

7" LCD monitor includes stand, remote control and dual video inputs.

LCD7 Features:

- Display size: 7 inch
- Aspect ratio: 16:9
- Resolution: 234 x 480pixels
- Dual video inputs (Video1 & Video2)
- Multi-purpose LCD monitor for VCD/DVD/TV/GPS
- Full function remote control
- Power supply: DC 12V
- Power consumption: 7W
- Dimension: 195 x 140 x 25mm

10m Video & Audio Cable for Truck Camera

Part No: VSRVM-CBL10

10m RCA (Video and Mono Audio) Cable.



WARNING: Both reversing cameras and parking sensors are designed only as an aid to drivers. They should never be considered as a substitute for normal driver responsibility. Proper driving technique and use of mirrors whilst reversing should always be observed by the driver.

SECURITY ESSENTIALS

Installation Essentials **62**

| | |
|-----------------------------------|----|
| Security Installation Essentials | 62 |
| Batteries | 62 |
| AC/DC Power Supplies | 62 |
| Leads & Connectors | 63 |
| Cables | 64 |
| CCTV Power Supplies | 65 |
| Uninterruptible Power Supplies | 65 |
| Cable Tools | 66 |
| Video Baluns | 66 |
| Video Balun Rackmount Panels | 67 |
| Video Amplifiers & Distributors | 67 |
| Surveillance Protection Equipment | 67 |

Remote Controls **68**

| | |
|------------------------------|----|
| Code Hopping Remote Controls | 68 |
| Remote Control Accessories | 68 |



SECURVIEW

BATTERIES



CR2450 3V Lithium Battery

Part No: CR2450BULK

- Suits:
- PIRW3
 - WREEDI



3V Lithium Battery - CR2025

Part No: CR2025BP

- Suits:
- RCTX3-T



CR2032 3V Lithium Battery

Part No: CR2032BP

- Suits many general purpose remote controls.



3V Lithium Battery - CR1616

Part No: CR1616BP

- Suits:
- GTTX / GTSTX / GTRTX / RCTX4-U



Remote Control Battery 12V, Type 23A

Part No: TX12V23A

- Suits:
- PTX, GLTX



12V DC 1.2AH Sealed Lead Acid Battery

**Part No: D12V1.2 (1.2AH)
D12V7 (7AH)**

- 12VDC
 - Maintenance Free Sealed Lead Acid Battery
 - Non-spillable Construction Design
 - High Quality and High Reliability
 - Low Self Discharge Characteristic
 - Power Failure Backup Battery
- *Available in 1.2AH and 7AH versions



Fully Automatic Sealed Lead Acid Battery Charger

Part No: PSLEADCHRG

- 12V 350mA Fully Automatic

AC / DC POWER SUPPLIES



Switchmode Power Supplies

| | | | |
|--------------|------------|--------|-----------|
| PS5VDC1AMP | 5 Volt DC | 1000mA | DC Plug |
| PS5VDC500MA | 5 Volt DC | 500mA | DC Plug |
| PS12VDC500MA | 12 Volt DC | 500mA | DC Plug |
| PS1500SM | 12 Volt DC | 1500mA | DC Plug |
| PS5000SM | 12 Volt DC | 5000mA | DC Plug |
| PS16VAC | 16 Volt AC | 1500mA | Bare Wire |
| PS18VDC | 18 Volt DC | 500mA | DC Plug |
| PS19V2A | 19 Volt DC | 2000mA | DC Plug |
| PS24VDC2AMP | 24 Volt DC | 2000mA | DC Plug |
| PS24VAC2AMP | 24 Volt AC | 2000mA | DC Plug |

All plugs - Inner Ø: 2.1mm / Outer Ø: 5.5mm

LEADS & CONNECTORS



DC Power Jack to Jack Coupler

Part No: VSDCJ2JC



RCA To BNC Adaptors

Part No: VSFR2B

- Male RCA to Female BNC adaptor



BNC To RCA Adaptors

Part No: VSFB2R

- Male BNC to Female RCA adaptor.



BNC / 'T' Connector

Part No: VSFBTA

- BNC - T Connector



BNC Connectors

**Part No: VSFBNC
Part No: VSFBNC3**

- BNC (Standard compression type)

- Available Models:
- VSFBNC (For RG59U 750 Ohm Coax Cable)
 - VSFBNC3 (With Separate Pin. For RG59 Coax Cable)



**High Quality
Compression BNC Plug**

Part No: VSFBNC6

- For RG6 Cable



**High Quality
Compression BNC Plug**

Part No: VSFBNC59

- For RG59 Cable



BNC Jack to Jack Bulkhead

Part No: VSFBNCBULKHEAD



Twist BNC Connector

Part No: VSFBNCTWIST

- Installer Can Fix this BNC Plug by Hand
- More Reliable than Crimp Style
- RG59



RCA Plug to F-Type Jack

Part No: VSFRFPT



F-Type Plug to BNC Plug

Part No: VSFFPBP



F-Type Plug to RCA Jack

Part No: VSFFPRJ



F-Type Plug to BNC Jack

Part No: VSFFPBJ



BNC Plug to RCA Plug

Part No: VSFBPRP



BNC Plug to F Jack

Part No: VSFBPFJ



**Inline BNC Connector,
Socket to Socket**

Part No: VSFB2B

- BNC Socket to BNC Socket



**BNC Plug to Plug 6"
Adaptor Cable**

Part No: VSBNC2PAC



**RCA Plug to BNC Jack
6" Adaptor Cable**

Part No: VSRCAP2BNCJAC



**36" Cable with 12VDC
Power Plug on Single End**

Part No: VSPP36C



**DC Power Plug to
Screw Terminal**

Part No: VSDCCABLE

- DC Plug Dimensions:**
Outer Ø: 5.5mm / Inner Ø: 2.1mm



**36" Cable with Power
Socket on Single End**

Part No: VSPP36C



**Power Plug to Power
Plug 6" Adaptor Cable**

Part No: VSP2PAC



**1 Female to 2 Male
Power Couplers**

Part No: VSDC1F2M



**Power Socket to Screw
Mount 6" Adaptor Cable**

Part No: VSPP2SMAC



DC Power Connector

**Part No: VSFDCP
Part No: VSFDCPF2.1
Part No: VSFDCP2.5**

- DC Power Connector Plug 2.1mm (Model: VSFDCP)
- DC Power Connector Socket 2.1mm (Model: VSFDCPF2.1)
- DC Power Connector Plug 2.5mm (Model: VSFDCP2.5)



Pre-terminated Combined Power & BNC Video Leads

Part No: RCA4CHLOOM10M
Part No: RCA4CHLOOM20M
Part No: RCA4CHLOOM30M

Pre-terminated cables with no crimping required. Your plug & play solution!
Please note: The above power / video leads are not suitable for cameras which draw more than 700mA of current.



Regulated Switchmode Step Down Converter

Part No: VSPOWCONVERTER

- Converts an AC or DC supply up to 36V to a regulated 12VDC output at up to 1A.



Connector Strip with Screw Terminals for Distributing Power to Cameras

Part No: VSTBB

- One Input
- 8 Outputs
- Polarity Markings



Low Voltage Battery Cut-Off

Part No: VSPOWCUTOFF

This Low Voltage Battery Cut-Off connects to your 12 or 24VDC power supply or alarm panel and prevents the complete discharge of the backup batteries.

The product has an adjustable voltage knob, allowing you to calibrate the voltage cut-off range to suit your requirements, and the Master On/Off switch easily turns On/Off both AC and DC power to the control panel or power supply.



RCA Line Plug Male - Red

Part No: VSFRLPR



RCA Line Plug Male - Black

Part No: VSFRLPB



RCA Line Plug Male - Yellow

Part No: VSFRLPY



RCA Line Socket Female - Red

Part No: VSFRLSR



RCA Extension Leads (3 x RCA to 3 x RCA)

Part No: RCA315
Part No: RCA330

1.5m (Model: RCA315)
3.0m (Model: RCA330)



Replacement 16ch BNC Lead for VIP Vision Analogue DVR

Part No: OCTOBNCN

This is a replacement 8 Channel BNC lead for VIP Vision capture card.



5-Way Power Splitter

Part No: DC4CHLOOM

- One DC Power Jack Input
- Five DC Power Jack Outputs

CABLES



Figure 8 Cable 14 x 0.2mm / 100m Roll

Part No: DF8C



Figure 8 Cable 24 x 0.2mm / 100m Roll

Part No: DF8C2



4 Core Cable 4 x 14.20mm Stranded 100m Roll

Part No: D4CC2



6 Core Alarm Cable 6 x 7/0.2mm Stranded 100m Roll

Part No: D6CC



Full Copper RG59 75Ohm Coax Cable 100m/R

Part No: DCOAXFC



100m Roll Combined RG59 Coax and Power Cable - Black 95% Braiding

Part No: DCOAXPWR24FCBP

- Combined coax/power cable
- 100% copper conductor
- Fig 8 - (2 x 24/0.2mm Stranded)



12VDC 18 Channel 15A Switch Mode CCTV Power Supply

Part No: PS12V15A18CH

- Efficient Compact Design
- 18 Individual Fused Outputs
- Outputs can be Connected in Parallel for Connecting Cameras
- Suitable for Indoor Use
- Input Voltage: AC 110-240V
- Output Voltage: 12VDC
- Dimensions(mm): 300(H) x 202(W) x 60(D)
- Weight 2.10kg



24VAC 18 Channel 10A Switch Mode CCTV Power Supply

Part No: PS24VAC10A18CH

Designed specifically for use in the CCTV industry, this 24VAC switch mode power supply can be used to provide power to 18 CCTV cameras (cameras rated at less than 500mA).

- Input Voltage can be Selected Between 110V and 220V
- Panel Isolation Switch ON/OFF
- Parallel CCTV Camera Connection: For CCTV Cameras Rated at More than 500mA, Multiple Outputs can be Connected in Parallel to Increase the Total Output Current

UNINTERRUPTIBLE POWER SUPPLIES



UPS Professional Series

| | | |
|-----------|-------|-------|
| UPS600VA | 360W | Tower |
| UPS1000VA | 600W | Tower |
| UPS1400VA | 840W | Tower |
| UPS2200VA | 1320W | Tower |

Suitable for standalone DVRs, Workstations and Printers.

- Wide Input Voltage Window
- Boost and Buck AVR
- Compatible with Generators
- Provides LED and Audible Alarm Function
- Surge Protection
- Protection for Short Circuit and Battery Low Voltage
- Automatic Diagnostic on Startup



UPS Enterprise Series

| | | |
|---------------|-------|-----------|
| UPS1000VAXC | 700W | Tower |
| UPS1000VAXCRM | 700W | Rackmount |
| UPS2000VAXC | 1340W | Tower |
| UPS2000VAXCRM | 1340W | Rackmount |
| UPS3000VAXC | 2100W | Tower |
| UPS3000VAXCRM | 2100W | Rackmount |

Same Unit can be Used as Tower or Rack Mount.

- Hot Swappable Battery
- Selectable Input/Output Voltage
- RS232 and USB Communication
- Built in Voltage Stabiliser
- Line Interactive
- True Sine Wave Output
- Simple Control and Compact Design
- SNMP Compatible Allowing Web Control and Monitoring
- Generator Compatible

CABLE TOOLS



7.6 inch Professional Compression Tool

Part No: VSCOMPTOOL

- Adjustable and Changeable for Waterproof Connectors
- Suitable for F/RCA/BNC RG-59, 6 (4C,5C) Waterproof Connectors
- Use with: VSFBC6 and VSFBC59



Coaxial Connector Cable Crimping Tool with 5 Jaws

Part No: TSA50

- Designed to Crimp BNC/TNC Connectors to RG58C/U and RG62 Coaxial Cable as well as the Centre Pin to the Centre Conductor
- Insulated Handle and Tension 6 Position Adjustment
- Hex sizes: 1.7, 2.5, 5.4, 6.5, 8.2mm
- Use with: VSFBC and VSFBC3



Coaxial Cable Stripping Tool

Part No: VSA18

- Coaxial Cable Stripper which Suits RG58/59/6 Cable
- Fitted with 3 Blades to Suit 4 Cable Diameters
- This 3 Position Stripper will Strip Cable Revealing Braid, Dielectric and Centre Conductor



5-in-1 Multi Purpose 12VDC Tester

Part No: VSVOLTESTER

Although compact in size, this 5-in-1 Multi Purpose 12VDC Tester is an essential product for installers who need to perform troubleshooting tests while installing CCTV surveillance systems. The five tests the unit performs are:

1. Voltage Test
2. Load Test
3. Voltage Drop Test
4. PTC Fuse Test
5. Polarity



Cable Tester - Tone Generator & Probe

Part No: VSCABLETESTER

Features (Probe):

- Sound or Illumination and Vocal-light Indicating for Choice
- Adjustable Volume
- Low Voltage Warning

Features(Tone Generator):

- Choose Switch of Multiple Frequency Signal and Single Signal
- Syllogistic Remote Switch Applies for Control Operation Mode
- Three Colour Pilot Light: Display Circuit Polarity, Continuity and Voltage Test
- Red and Black Test Standard Four Wire Plug

VIDEO BALUNS



Quad Passive Video Balun - RJ45 Jack to 4 BNC Female Connectors

Part No: VSQUADBALUN

- For both Camera Side and Monitor side
- Camera/Monitor Connectors: 4x BNC Female
- Wire Connector: RJ45 Jack
- Wire Required: CAT5, or Better
- Frequency Response: DC to 6.5 MHz
- Attenuation: 75 ohm to 100 ohm About 0.4dB
- Impedance: Coax/75 ohm, UTP cable/100 ohm.
- Coaxial Cable: Unbalanced, 75 ohm.
- UTP C5: balanced, 24 AWG, 100 ohm.



1 Channel Video/Audio Balun

Part No: VSQC-3424

This 1 channel balun TR/TX not only has a BNC socket, but it also comes with 2 RCA sockets for audio transmission support. This device converts video camera cabling and increases transmission distance by converting the signal from coaxial to CAT 5 Cable.



Monitor Side BNC Male Video Active Balun

Part No: VSBAL-MBMAA

- Monitor Side
- BNC Male to Screw Terminal
- 12VDC Power Plug
- 1800m CAT5 Active-Active Transmission Distance



Camera Side BNC Male Video Active Balun

Part No: VSBAL-CBMAA

- Camera Side
- BNC Male to Screw Terminal with DC Power Plug and Socket Pigtail
- 12VDC Power Plug
- 1800m CAT5 Active-Active Video Transmission Distance



Camera Side BNC Male Video Active Balun

Part No: VSBAL-CBMAL

- BNC Male to Screw Terminal with 12VDC Plug Pigtail
- 1800m CAT5 Active-Active Video Transmission Distance
- Also Avail. with Built-in Surge Protector



1 Channel Active Camera Side Balun

Part No: VSBALACTIVE

- 1 Channel Active Camera Side Balun
- 12VDC 50mA
- Connector for camera: BNC Male, BNC Female, F Male, F Female, 20cm BNC Male Cable
- Screw Terminal Wire Connector



**Passive Video Balun Pair
BNC to UTP**

Part No: VSBALTWPAIRVO

- Video Over 2 Wires with Terminal Block



**Passive Ethernet Over Coax
Baluns**

Part No: VSEOCPAIR

- Transfers Ethernet Signal through Coax
- Data Rate 10Mbps Up to 100m Cable
- Cost Effective Way of Upgrading to IP



HDMI Over Coax Extender

Part No: HDMICOAXSET

- Send HDMI signals over single coaxial cable up to 100m at 1080p resolution
- Support daisy chain multiple remote displays
- HDMI 1.3b and HDCP compliant



**1 In 3 Out HDMI to CAT5
Transmitter / Receivers**

**Part No: HDMICAT5-TX
HDMICAT5-RX**

- 1 Input 3 Output HDMI to CAT5 Extender with Chainable Receiver
- HDMI 1.3 Compliant / HDCP Compatible
- Max Transmission Range 100m at 1080p



**Receiver Shown Top (HDMICAT5-RX)
Transmitter Bottom (HDMICAT5-TX)**

VIDEO AMPLIFIERS & DISTRIBUTORS



**1 Video Signal to 1 Video
Output**

Part No: VSAV11BNCF

- Video Input/Output: 1/1
- Video Connector: BNC Female
- Power Consumption: 12VDC 150mA
- Also Available in 2 Video Output
Model: VSAV12BNCF (left)



**1~4 Video Signal to 4 Video
Output**

**Part No: VSAV14BNCF (1 Input)
VSAV24BNCF (2 Inputs)
VSAV44BNCF (4 Inputs)**

- Video Connector: BNC Female
- **Video Input/Output:**
VSAV14BNCF: 1/4
VSAV24BNCF: 2/4
VSAV44BNCF: 4/4
- **Power Consumption:**
VSAV14BNCF: 12VDC 150mA
VSAV24BNCF: 12VDC 300mA
VSAV44BNCF: 12VDC 500mA



VIDEO BALUN RACKMOUNT PANELS



***Balun Not Included**

**19" 1RU Quad Video Balun Panel
(Unloaded) with Designation Strip**

Part No: VSQC-3427RMP

CCTV Quad Balun Blank Panel Accessory with Designation Strip
This 16 port rack panel is used in conjunction with the VSQC-3427RM to create a professional rack mount solution.



**Quad Video Passive Balun
BNC Female Bulkhead Panel Mount**

Part No: VSQC-3427RM

BNC Female to RJ45 Jack Shielded CCTV Balun Quad - Rack Mountable

SURVEILLANCE PROTECTION EQUIPMENT



**UTP Data Surge Protection for
PTZ Controllers or Data Cables**

Part No: VSSPU

- Terminal Block Simple In-Out Design
- Surge protection attack time: 100ns
- Maximum Surge Current: 5000A
- Dimensions: 45W x 25L x 25D mm
- Weight: 74g



**UTP Video & Data Surge
Protection for IP Cameras &
Network Devices**

Part No: VSSPR

- RJ45 Connector Simple In-Out Design
- Surge protection attack time: 100ns
- Maximum surge current: 50,000A
- Dimensions: 32W x 45L x 72D mm
- Weight: 105g



**Coaxial Surge Protection for
CCTV Cameras**

Part No: VSSPB

- BNC Connector Simple In-Out Design
- Surge protection attack time: 100ns
- Maximum surge current: 5000A
- Dimensions: 78W x 25L x 25D mm
- Weight: 80g



Ground Loop Isolator

Part No: VSVSI

- 75Ω BNC Male to 75Ω BNC Female
- Transient Voltage Suppressor: 12V RMS
- 100mm Miniature Coaxial Cable Input BNC Male with BNC Female Output
- Isolation Voltage: 750V DC
- Insulation Resistance: >100 M ohm
- Dimension: 50 x 30 x 25 mm



Single Button Remote Control

Part No: GLTX (Fixed Code)
GLRLTX (Rolling Code)

- GLTX - Fixed Code
- Used with Rhino LS and GA Car Alarms
- GLRLTX - Rolling Code



2 Button Code Hopping Remote

Part No: GTTX (Yellow LED)
GTSTX (Red LED)
GTRTX (Green LED)

- GTTX - Yellow LED:**
- Code Hopping Suits Rhino RCX and RES4601V2 Immobilisers, WGUARDSMS2010
- GTSTX - Red LED:**
- Code Hopping Suits Rhino GTS Car Alarm
- GTRTX - Green LED:**
- Fixed Code Suits Rhino GTR Car Alarm



3 Button Code Hopping Remote with LED Torch

Part No: RCTX3-T

- 3 button remote With LED torch
- As supplied With Rhino JAGV2, RAV3 & RAMV2 Car Alarm
- Also compatible with Rhino RCX, RES4601V2 and WGSMS2010



4 Button Code Hopping Remote Control for RAV3

Part No: RAV3TX

- As supplied with the Rhino RA (V3) and JAGV3 Car Alarm
- Also compatible with Rhino RCX, RES4601V2 and WGSMS2010



4 Button Code Hopping Remote

Part No: RCTX4-U

- As supplied with Rhino RXPROR4. Optional Use with Rhino RCX, RES, JAG, RAM, WGSMS2010
- Colour Coded Buttons with Printed Numbers to Match GTTX / RCTX3-T i.e Button 1 on Your RCTX4-U is the Same Function as Button 1 on your GTTX Remote



UHF Learning Programmable 4 Button Replacement Remote

Part No: PTX

The Rhino PTX Remote Control can duplicate a majority of fixed code remote controls (not code hopping remotes). The PTX remote has four buttons so that it will universally suit most remotes with multiple functions. The same code can be copied onto multiple buttons if desired. If your original remote has a function controlled by pressing multiple buttons together, you must duplicate that code to a single button on your Rhino PTX.

- 4 Channel Programmable Remote Control
- Many Uses Including Car & Home Alarms, Panic Buttons, Garage Doors
- Copies Most Radio Frequency Fixed Code Remote Controls
- Learns in Seconds / Battery is Included
- 255-500 MHz Adjustable Frequency

Universal Air Conditioner Remote

Part No: RS10

This universal air conditioner remote control can control over 100 different world famous brands of air-conditioners, including Fujitsu, Daikin, Hitachi, Mitsubishi and Samsung.

This remote is the ideal product to replace lost or damaged air conditioner remotes and can control multiple functions including fan speed and air swing direction.

RS10 Features:

- Low Power Consumption.
- Long Distance Transmission Range
- Simple to Set Up and Operate
- LCD Screen Shows Functions, e.g: Temperature and Operating Mode
- Dimensions (mm): H135 x W47 x D23
- Requires 2x AAA Batteries to Operate



* Remote Control Not Included

RF Remote Control Frequency Counter

Part No: FREQCOUNTER

This tool is ideal for both home and vehicle technicians to quickly check if UHF remotes are working and re-tune to correct frequency if required. Features large & easy to read display; reads 250~500MHz; power supply included.

COMMUNICATION SYSTEMS

Business Phone Systems 70

| | |
|----------------------------------|----|
| EasyPBX Business Phone Solutions | 70 |
| EasyPBX Phone System Accessories | 71 |

IP Video Intercom Systems 72

| | |
|---------------------------------|----|
| IP Video Intercom Kit | 72 |
| Video Intercom Outdoor Stations | 73 |
| Video Intercom Indoor Monitors | 74 |





Digital PBX Keyphone System with Four LCD Handsets

**Part No: EASYPBX-PACK4W (White Handsets)
EASYPBX-PACK4B (Black Handsets)**

Complete business phone system: Easy to use & easy to program

Main Features:

- Supports up to 16 handsets and 6 incoming PSTN lines
- Expansion cards available (Voice Mail, Automated Attendant, Automated greeting, Caller ID, Door phone, VoIP trunk / extension)
- Automatic Call Distribution
- Call transfer, Call Forward, Call Park, Call Barring, Call Queuing, Call Override
- Conference Calling & Do Not Disturb
- User Set Alarms
- Least Cost Routing
- Time Based Routing
- Internal or External hold music
- Paging and Intercom
- Distinctive Ring
- Speed and One Touch Dialing
- Optional External Battery Backup

System Includes:

- 4x LCD Display Handsets
- 1x PBX Central Control Module





Additional Digital Keyphones for EasyPBX Business Phone Systems

Part No: EASYPBX-PHONE8W/B

Part No: EASYPBX-PHONE12B/W

Additional handsets for EASYPBX phone systems. Each model comes in black or white, features fully-hands free two wire installation, can display caller ID with optional expansion card, displays time, date and phone name on stand by screen. Specific details regarding model are listed below:

EASYPBX-PHONE8W/B Features:

- 12 Programmable Function Keys
- Time, Date, Phone Name Displayed
- Displays Caller ID (Expansion Card Req.)

EASYPBX-PHONE12W/B Features:

- 16 Programmable Function Keys
- Time, Date, Phone Name Displayed
- Displays Caller ID (Expansion Card Req.)



Additional Digital Keyphones

Part No: EASYPBX-PHONE24W/B

EASYPBX-PHONE24W/B Features:

- 24 Programmable Function Keys
- Time, Date, Phone Name Displayed
- Displays Caller ID (Expansion Card Req.)
- Extra Function Keys may be Used as an Operators Switchboard



Linksys Voice Over IP Analogue Telephone Adapter

Part No: VOIP-VOICEBOX

- Enables Legacy PBX Hardware for VoIP
- Provides Routing and QoS Functions, Allowing you to Share your Existing Internet Connection without Sacrificing Call Quality
- Configuration via a Simple Web Interface
- Includes Two Standard Telephone Sockets for Phones or Fax Machines With Independent Phone Numbers
- Compatible with All Common Telephone Features, such as Caller ID, Call Waiting and Voicemail



Telephone Extension Leads

**Part No: PHONEEXT1M (1m)
PHONEEXT10 (10m)
PHONEEXT20 (20m)
PHONEEXT30 (30m)**

- Flexible Multistranded Wire & Fitted with Modular 6P4W Plugs
- Can be Used with 606 Adapter Shown Below
- Available in a Variety of Lengths



Australian 606 to US Modular Adapter

Part No: 606M2

- Can be Used with extension leads Shown above



3.5mm Male to Male Audio Lead

Part No: AUDIOCABLE

- Used to Connect the EasyPBX System to a Standard Hold Music Source e.g: Radio
- Cable Length: 1.2m

IP VIDEO INTERCOM SYSTEMS

The latest range of IP video intercoms from VIP Vision are designed for flexibility and ease of use and are ideal for commercial and large residential applications. The video intercom range features stylish door stations and colour-display indoor monitors.

Unprecedented ease of installation:
powerful and functional IP video
intercoms for residential buildings



1.3 MEGAPIXEL
DAY & NIGHT CAMERA

TOUCHSCREEN
CONTROL MONITOR

EXPAND TO SIX
MONITORS & STATIONS

1.3 Megapixel Touchscreen IP Intercom Kit for Residential

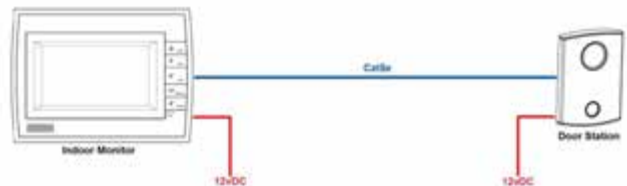
Part No: INTIPRKIT

The INTIPRKIT is an ideal single monitor/door station solution for residential applications. It features a vandal resistant aluminium door station with 1.3 megapixel camera; a 7" touchscreen indoor monitor; and 30m CAT5e Ethernet cable and 2x 12VDC power supplies for installation. This base system can be expanded with additional monitors and door stations, up to six of each in total.

Installation for a single door station and monitor is as simple as connecting both monitor and door station via a CAT5 cable, then providing power to both devices. The door station is operated simply via a single button whilst the indoor monitor is controlled via resistive touchscreen and on-device buttons. The system supports remote unlock, missed/placed/received call details, visitor audio/video messaging and group calling functions

INTIPRKIT Includes:

- 1x 7" Touchscreen Indoor Monitor
- 1x IP Door Station with 1.3 Megapixel Camera
- 1x 30m CAT5e Ethernet Cable
- 2x 12V DC Power Supplies*
- 4GB onboard storage (inaccessible) for video/audio messages and camera snapshots



Above: The simplest installation scenario for the INTIPRKIT

Optionally available in Power over Ethernet system with 2 x PoE receiver (WT-CAT5POER) and 1x PoE Switch (VS8PORTPOEV2)

| INTIPMONB - Indoor Monitor | |
|----------------------------|--|
| Display | Resistive Touch 7" TFT LCD |
| Display Resolution | 800 x 480 |
| Audio Input | Omnidirectional Microphone |
| Audio Output | Embedded Loudspeaker |
| Bidirectional Talk | Yes |
| Internal Storage | 4GB - 100 photos/50 videos (5 min. max) /50 video & audio messages |
| Ethernet | 10M/100Mbps Self Adaptive |
| Network Protocol | TCP/IP |
| Power | 12VDC |
| Power Consumption | Standby ≤ 1.5W / Work ≤ 7W |
| Work Environment | -10°C~+60°C / 10~90%RH |
| Dimensions | 261 x 192 x 24.1mm (LxWx H) |
| Weight | 1.0Kg |

| INTIPRDSV - Door Station | |
|--------------------------|---|
| Door Station Camera | 1.3 Megapixel CMOS Camera |
| Memory | 128MB |
| Audio Input | Omnidirectional Microphone |
| Audio Output | Embedded Loudspeaker |
| Bidirectional Talk | Yes |
| Vandal/Weather Resistant | Vandal: Yes / Weather: Requires partial shelter (eaves, awning, etc.) |
| Ethernet | 10M/100Mbps Self Adaptive |
| Network Protocol | TCP/IP |
| Power | 12VDC |
| Power Consumption | Standby ≤ 1W / Work ≤ 10W |
| Work Environment | -10°C~60°C / 10~95% RH |
| Dimensions | 141 x 100 x 16.8 mm |
| Weight | 0.8Kg |



Black Touch Input Outdoor Station for Apartments

Part No: INTIPADSB

The INTIPADSB is an excellent video intercom solution in apartment complexes and other large residential applications. For ease of access in all situations, the backlit keypad lights up in blue upon detecting motion and door station includes voice verification on key presses.

INTIPADSB Features:

- 3.0" Super-twisted Nematic (STN) Display
- Stylish Black-Crystal Glass Panel with Resistive Touch Input Keypad
- 1.3 Megapixel Door Camera with Excellent Low Light/Night Time Use
- Input Buttons Feature Voice Verification
- Call Contact / Management Centre / Indoor Monitor Functions
- Support for Tamper Detection and Remote Unlock
- Adopt TCP/IP Network Standard Protocol - Assigns Unique IP Address for Each Device
- Supports SNMP Network Protocol
- Door Station can Communicate to Up to 255 Indoor Terminals
- Authentication Methods: Integrated Circuit (IC) Card & Password Support
- Power Supply: 12VDC
- Dimensions (mm): 376(L) x 151(W) x 60(H)



Silver Outdoor Station for Apartments

Part No: INTIPADSS

The INTIPADSS is an excellent video intercom solution in apartment complexes and other large residential applications. This model features a durable die-cast aluminium construction for the station front plate and aluminium keypad buttons. This door station also includes voice verification on key presses for ease of access.

INTIPADSS Features:

- 3.0" Super-twisted Nematic (STN) Display
- Durable Die-Cast Aluminium Construction with Aluminium Keypad
- 1.3 Megapixel Door Camera with Excellent Low Light/Night Time Use
- Input Buttons Feature Voice Verification
- Call Contact / Management Centre / Indoor Monitor Functions
- Support for Tamper Detection and Remote Unlock
- Adopt TCP/IP Network Standard Protocol - Assigns Unique IP Address for Each Device
- Supports SNMP Network Protocol
- Door Station can Communicate to Up to 255 Indoor Monitor Terminals
- Authentication Methods: Integrated Circuit (IC) Card & Password Support
- Power Supply: 12VDC
- Dimensions (mm): 376(L) x 151(W) x 60(H)



Compact Outdoor Station for Residential Use

Part No: INTIPRDSV

The INTIPRDSV is an ideal video intercom solution for homes and single-premises buildings. This model features a compact, vandal resistant construction and 1.3 megapixel camera that operates in low light conditions.

INTIPRDSV Features:

- 1.3 Megapixel CMOS camera with excellent night time use
- Unidirectional microphone audio input / Built in speaker for audio output
- Supports Remote unlock / Visitor audio & video messaging / Group call functions
- Network Protocol: TCP/IP,SNMP,MDI/MDI-X Self-adaptive
- Power Supply: 12VDC
- Dimensions (mm): 141(L) x 100(W) x 17(H)



Touchscreen Indoor Intercom Monitor & Handset

Part No: INTIPMONAH

The INTIPMONAH is a part of the VIP Vision range of elegant indoor monitors to accompany your video intercom solution. The unit is operated via the resistive touchscreen, with common functions completed quickly via buttons on the front of the device. For additional functionality, this device also features a handset that fits snugly to the left of the main unit.

INTIPMONAH Features:

- 7" Resistive Touch TFT LCD Screen - 800 x 600 Resolution
- 1 Channel 10/100Mbps Self Adaptive Ethernet
- Able to Communicate with Others in the Community
- Details Missed / Received / Placed Calls with Timestamp
- Contact Book / Leave Message / Emergency Call Functionality
- Monitor Mode - View Through Camera at Any Time
- Supports Do Not Disturb & Multiple Outdoor Station Connectivity
- Power Supply: 12VDC / PoE requires receiver (Model: WT-CAT5POER)

Model without handset also available - Model: INTIPMONA



Touchscreen Indoor Intercom Monitor

Part No: INTIPMONB

The INTIPMONB is a part of the VIP Vision range of elegant indoor monitors to accompany your video intercom solution. The unit is operated via the resistive touchscreen, with common functions completed quickly via buttons on the front of the device.

INTIPMONB Features:

- 7" Resistive Touch TFT LCD Screen - 800 x 600 Resolution
- 1 Channel 10/100Mbps Self Adaptive Ethernet
- Able to Communicate with Others in the Community
- Details Missed / Received / Placed Calls with Timestamp
- Contact Book / Leave Message / Emergency Call Functionality
- Monitor Mode - View Through Camera at Any Time
- Supports Do Not Disturb & Multiple Outdoor Station Connectivity
- Power Supply: 12VDC / PoE requires receiver (Model: WT-CAT5POER)



Touchscreen Indoor Video Intercom Monitor

Part No: INTIPMONC

The INTIPMONC is a part of the VIP Vision range of elegant indoor monitors to accompany your video intercom solution. The unit is operated via the resistive touchscreen, with common functions completed quickly via buttons on the front of the device.

INTIPMONC Features:

- 7" Resistive Touch TFT LCD Screen - 800 x 600 Resolution
- 1 Channel 10/100Mbps Self Adaptive Ethernet
- Able to Communicate with Others in the Community
- Details Missed / Received / Placed Calls with Timestamp
- Contact Book / Leave Message / Emergency Call Functionality
- Monitor Mode - View Through Camera at Any Time
- Supports Do Not Disturb & Multiple Outdoor Station Connectivity
- Power Supply: 12VDC / PoE requires receiver (Model: WT-CAT5POER)



ENSA LED LIGHTING

The ENSA Range 76

| | |
|---------------------------------|----|
| Advantages of ENSA LED Lighting | 76 |
| Colour Temperature Guide | 76 |

ENSA LED Lighting 77

| | |
|------------------------------|----|
| LED High Bay Lighting | 77 |
| LED Flood Lighting | 78 |
| Floods for Industry | 78 |
| Floods for Domestic | 80 |
| LED Tube Lighting | 81 |
| LED Lighting for Shopfitting | 82 |
| LED MR16 Downlights | 84 |



ENSA™

LED LIGHTING & ENERGY SAVING DEVICES

ENSA™

LED LIGHTING & ENERGY SAVING DEVICES

In Action: ENSA™ 200W LED High Bay Installation

1 Dramatic Energy & Cost Savings

ENSA LED Lighting can consume up to 70% less energy than conventional high intensity discharge (HID), metal-halide or halogen lamps.

LED lights have a rated operating lifespan far higher than that of their HID counterparts. Reductions in power consumption and replacement lamps can save you thousands annually.

2 The Light of the Future

LED technology is the future of lighting. Unlike traditional HID lamps, there is no warm up or cool down phase. LED lights reach maximum intensity immediately after being switched on. LED lights are also more robust.

They are resistant to shock and vibration and they do away with the audible buzzing noises, light flickering and ambient heat generated by conventional lighting.

3 Environmentally Friendly Lighting

The reduction in energy consumption offered by LED lighting means that less carbon dioxide is released into the atmosphere. Unlike fluorescent tubes and compact fluorescent lamps, LED lights contain no mercury.

This means they can be disposed of easily and safely. They also do not emit any infrared or ultraviolet radiation.

4 Energy Saving Scheme Accredited

We have experience in large installations and are an Accredited Certificate Provider (ACP) under the NSW Government Energy Saving Scheme (ESS). This means we can offer incentives along with our ESS approved products to help you save on your electricity bill and make your workplace more efficient.

Ask us about planning your energy efficient lighting upgrade and how we can improve your return on investment.

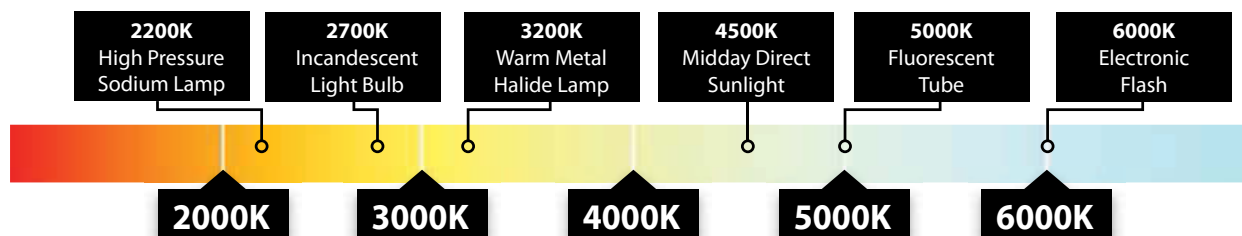
5 Assembled & Quality Tested in Australia



As the number one sustainable lighting technology, LED lighting has undergone rapid development. This has led to some brands compromising quality for cost. When reliability and performance is most important, we recommend ENSA's LED lighting range that has been assembled and quality tested in Australia. This includes every product in the ENSA LED high bay range and the LED flood lights for industry range. Check for the logo above on select ENSA products.

6 Defining LED Colour Temperature

The ENSA LED lighting range is available in a number of colour temperatures to suit your needs. Below is a reference scale charting existing light sources and their colour temperature. Use this chart as an approximate guide when selecting from our LED lighting range.





ENSA 150W LED High Bay Light

Part No: LEDHB150W

The LEDHB150W (shown with 120° reflector) is a high performance LED lamp designed to replace metal-halide, gas discharge and halogen high bay lamps. It is ideal for ceilings up to 8m in height and is appropriate for use in retail spaces, general lighting, assembly lines and more.

- 14250 Lumens Light Output
- Efficient Aluminium Heatsink
- Natural White Colour Temperature
- Includes Mounting Hook & Safety Cable
- IP54 Ingress Protection Rating
- Digital Dimming Control Available on Special Request

4500K



* LEDHB150W comes standard with 90° aluminium reflector unless specified. See other reflectors below.



ENSA 200W LED High Bay Light

Part No: LEDHB200W

The LEDHB200W (shown with 90° reflector) is a high performance LED lamp designed to replace metal-halide, gas discharge and halogen high bay lamps. It is ideal for ceilings up to 12m in height and is appropriate for use in large retail spaces, warehouses, factories and more.

- 19000 Lumens Light Output
- Efficient Aluminium Heatsink
- Natural White Colour Temperature
- Includes Mounting Hook & Safety Cable
- IP54 Ingress Protection Rating
- Digital Dimming Control Available on Special Request

4500K



* LEDHB200W comes standard with 90° aluminium reflector unless specified. See other reflectors below.



ENSA 300W LED High Bay Light

Part No: LEDHB300W

The LEDHB300W (shown with 45° reflector) is a high performance LED lamp designed to replace metal-halide, gas discharge and halogen high bay lamps. It is ideal for ceilings up to and beyond 12m in height and is appropriate for use in large retail spaces, warehouses, factories, manufacturing facilities, indoor sports facilities and more.

- 28500 Lumens Light Output
- Efficient Aluminium Heatsink
- Natural White Colour Temperature
- Includes Mounting Hook & Safety Cable
- IP54 Ingress Protection Rating
- Digital Dimming Control Available on Special Request

4500K



* LEDHB300W comes standard with 90° aluminium reflector unless specified. See other reflectors below.



ENSA 120° Aluminium Reflector

Part No: LEDHBRF120

- Ceiling heights 4 - 6m
- Assembly lines, display lighting, general lighting
- Ø: 500mm x H: 150mm



ENSA 90° Aluminium Reflector

Part No: LEDHBRF90

- Ceiling heights 6 - 8m
- Retail spaces, manufacturing, warehouses
- Ø: 500mm x H: 150mm



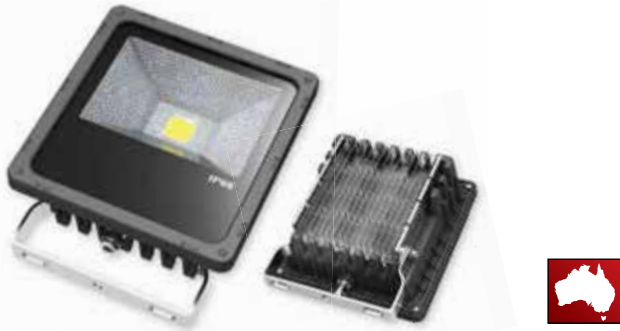
ENSA 45° Aluminium or Polycarb Reflector

Part No: LEDHBRF45 / LEDHBRF45P

- Ceiling heights 8 - 12m
- Factories, large retail spaces, halls, sports facilities, large warehouses
- Ø: 420mm x H: 270mm

ENSA LED FLOOD LIGHTING FOR INDUSTRY

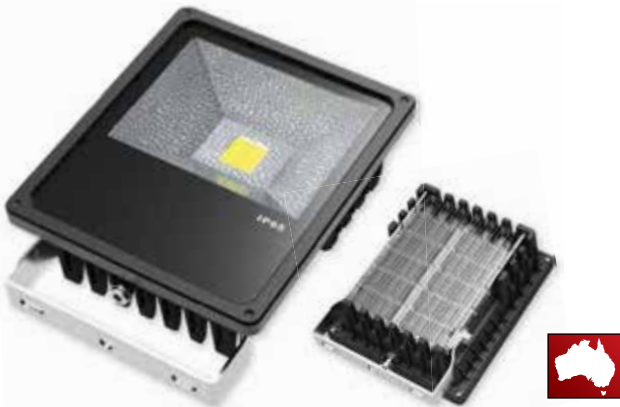
The ENSA LED Flood Lighting for Industry range comprises high quality LED flood lights, purpose-built for commercial and industrial applications. Each ENSA Flood Light Pro features a light weight construction of aluminium and UV stabilised plastic. The housing is built for outdoor use with a waterproof body and toughened glass window. Direct driver contact to the heatsink also means that the flood light will remain brighter for longer.

**ENSA 20W LED Flood Light Pro****4500K****Part No: LEDFLP20W45K**

- 20W Power Consumption
- 1700 Lumens Light Output
- 120° Beam Angle
- >0.9 Power Factor
- 85-265VAC Input Voltage
- Natural White Colour Temperature
- IP65 Ingress Protection Rating
- Dimensions (mm): 166 x 201 x 77

**ENSA 30W LED Flood Light Pro****4500K****Part No: LEDFLP30W45K**

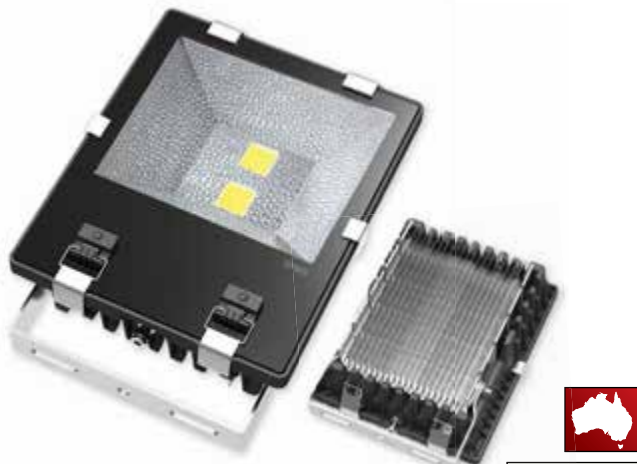
- 30W Power Consumption
- 2600 Lumens Light Output
- 120° Beam Angle
- >0.9 Power Factor
- 85-265VAC Input Voltage
- Natural White Colour Temperature
- IP65 Ingress Protection Rating
- Dimensions (mm): 178 x 215 x 81

**ENSA 50W LED Flood Light Pro****4500K****Part No: LEDFLP50W45K**

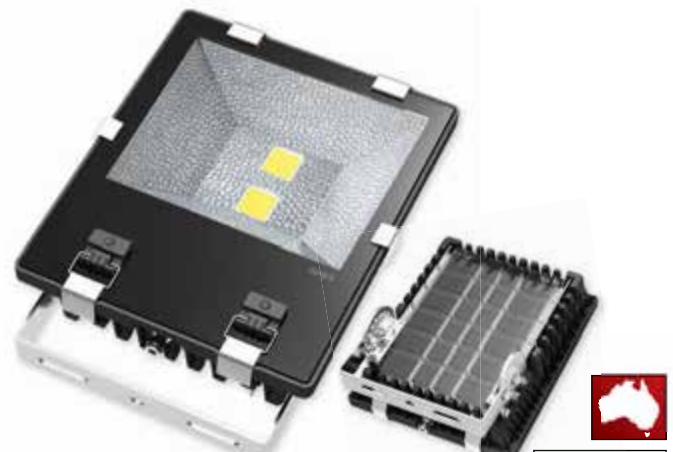
- 50W Power Consumption
- 4300 Lumens Light Output
- 120° Beam Angle
- >0.9 Power Factor
- 85-265VAC Input Voltage
- Natural White Colour Temperature
- IP65 Ingress Protection Rating
- Dimensions (mm): 194 x 253 x 95

**ENSA 70W LED Flood Light Pro****4500K****Part No: LEDFLP70W45K**

- 70W Power Consumption
- 6000 Lumens Light Output
- 120° Beam Angle
- >0.9 Power Factor
- 85-265VAC Input Voltage
- Natural White Colour Temperature
- IP65 Ingress Protection Rating
- Dimensions (mm): 250 x 259 x 116

**ENSA 100W LED Flood Light Pro****4500K****Part No: LEDFLP100W45K**

- 100W Power Consumption
- 8000 Lumens Light Output
- 120° Beam Angle
- >0.9 Power Factor
- 85-265VAC Input Voltage
- Natural White Colour Temperature
- IP65 Ingress Protection Rating
- Dimensions (mm): 250 x 309 x 116

**ENSA 150W LED Flood Light Pro****4500K****Part No: LEDFLP150W45K**

- 150W Power Consumption
- 12750 Lumens Light Output
- 120° Beam Angle
- >0.9 Power Factor
- 85-265VAC Input Voltage
- Natural White Colour Temperature
- IP65 Ingress Protection Rating
- Dimensions (mm): 310 x 375 x 187



ENSA 200W LED Flood Light Pro

Part No: LEDFLP200W45K

- 200W Power Consumption
- 17000 Lumens Light Output
- 120° Beam Angle
- >0.9 Power Factor
- 85-265VAC Input Voltage
- Natural White Colour Temperature
- IP65 Ingress Protection Rating
- Dimensions (mm): 340 x 395 x 187

4500K



ENSA 400W LED Flood Light Pro

Part No: LEDFLP400W45K

LEDFLP400W45K Features:

- 400W Power Consumption
- 34000 Lumens Light Output

General :

- Innovative and Efficient Heatsink Design
- 62° Beam Angle
- >0.9 Power Factor
- 85-265VAC Input Voltage
- Natural White Colour Temperature
- IP65 Ingress Protection Rating
- Dimensions (mm): 467 x 266 / Ø367

4500K

Available on
Special Request



ENSA 600W LED Flood Light Pro

Part No: LEDFLP600W45K

LEDFLP600W45K Features:

- 600W Power Consumption
- 51000 Lumens Light Output
- Innovative and Efficient Heatsink Design
- 62° Beam Angle
- >0.9 Power Factor
- 85-265VAC Input Voltage
- Natural White Colour Temperature
- IP65 Ingress Protection Rating
- Dimensions (mm): 467 x 266 / Ø367

4500K

Available on
Special Request



*Cooler and warmer colour temperatures and infrared LED configurations are also available with the ENSA LED Flood Light Pro range by special request. Contact RhinoCo Technology for more details on colour temperature availability.

ENSA LED FLOOD LIGHTING FOR DOMESTIC

LED floodlights and tunnel lights are an efficient alternative to traditional HPS (high-pressure sodium), metal-halide and halogen floodlights. LED floodlights can save you 50-70% on your current outdoor lighting costs. Each flood light is offered in a range of colour temperatures, subject to availability.



ENSA 10W LED Flood Light

Part No: LEDFL10WXK

- 530lm Light Output
- 120° Beam Angle
- IP65 Rating
- 85-265V AC (50-60Hz)
- 115 x 100 x 85mm

3000K

5000K



ENSA 20W LED Flood Light

Part No: LEDFL20WXK

- 1300lm Light Output
- 120° Beam Angle
- IP65 Rating
- 85-265V AC (50-60Hz)
- 180 x 140 x 135mm

3000K

5000K



ENSA 30W LED Flood Light

Part No: LEDFL30WXK

- 2000lm Light Output
- 120° Beam Angle
- IP65 Rating
- 85-265V AC (50-60Hz)
- 224 x 185 x 160mm

3000K

5000K



ENSA 50W LED Flood Light

Part No: LEDFL50WXK

- 3300lm Light Output
- 120° Beam Angle
- IP65 Rating
- 85-265V AC (50-60Hz)
- 285 x 234 x 170mm

3000K

5000K



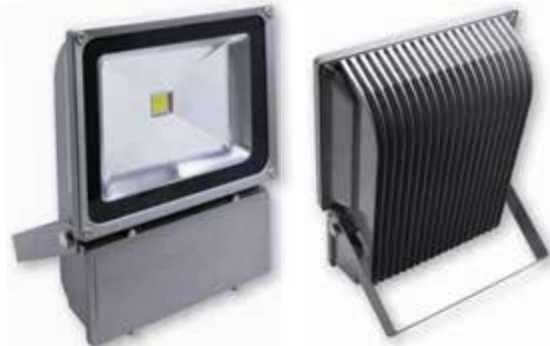
ENSA 70W LED Flood Light

Part No: LEDFL70WXK

- 4600lm Light Output
- 120° Beam Angle
- IP65 Rating
- 85-265V AC (50-60Hz)
- 285 x 360 x 183mm

3000K

5000K



ENSA 100W LED Flood Light

Part No: LEDFL100WXK

- 7000lm Light Output
- 120° Beam Angle
- IP65 Rating
- 85-265V AC (50-60Hz)
- 290 x 360 x 260mm

3000K

5000K



ENSA 150W LED Flood Light

Part No: LEDFL150WXK

- 9800lm Light Output
- 120° Beam Angle
- IP65 Rating
- 85-265V AC (50-60Hz)
- 380 x 280 x 260mm

3000K

5000K

ENSA LED SENSOR FLOOD LIGHTING FOR DOMESTIC



ENSA 20W Sensor LED Flood Light

Part No: LEDFL20WXKS

- 120° Detection Arc
- 1120lm Light Output
- 120° Beam Angle
- IP65 Rating
- 85-265V AC (50-60Hz)
- 180 x 140 x 135mm

3000K

5000K



ENSA 50W Sensor LED Flood Light

Part No: LEDFL50WXKS

- 120° Detection Arc
- 2800lm Light Output
- 120° Beam Angle
- IP65 Rating
- 85-265V AC (50-60Hz)
- 285 x 250 x 170mm

3000K

5000K

ENSA LED TUBE LIGHTING

As a replacement for fluorescent tubes, energy efficient LED tubes can reduce your power bill by at least 50%. They can be easily retrofitted into existing installations. They are ideal for use in offices, stores, factories, warehouses, public transport, supermarkets, shop displays, and exhibition lighting.

ENSA T8 LED Tube Lighting

Part No: LEDTU10W / LEDTU20W

The LED sensor tube comes in standard tube sizes to be retrofitted into existing installations. This includes magnetic and electronic ballast configurations.

- Available in 2ft (~600mm) and 4ft (1200mm) standard sizes.
- 800 (2ft) or 1600 (4ft) Lumens Light Output
- Translucent Frosted Diffuser for Soft Light
- Available in Cool White Colour Temperature
- Easily Retrofittable Design
- Does Not Contain Mercury or Emit UV Radiation

5500K



ENSA LED SENSOR TUBE LIGHTING

The inclusion of the infrared sensor means that the light dims when there's no movement in a room. When movement is detected, the tube light brightens. The sensor tubes use less power when dimmed which contributes to your electricity savings. This makes the sensor light ideal for underground/storey car parks, underpasses and other areas with intermittent movement.

ENSA T8 LED PIR Sensor Tube Lighting

Part No: LEDTU9WS3 • LEDTU19WS3

The LED sensor tube comes in standard tube sizes to be retrofitted into existing installations. This includes magnetic and electronic ballast configurations.

- Available in 2ft (~600mm) and 4ft (1200mm) standard sizes.
- 630(2ft) or 1350(4ft) Lumens Light Output
- PIR Sensor Controlled Light - 4m 120° Detection Arc
- Dims when No Movement and Brightens Upon Movement
- 3 Minute ON-Timer
- Translucent Frosted Diffuser for Soft Light
- Available in Cool White Colour Temperature
- Ideal for Carparks, Underpasses and Areas with Low People Traffic
- Does Not Contain Mercury or Emit UV Radiation

5500K



ENSA LED LIGHTING FOR SHOPFITTING

The ENSA LED lighting for shopfitting range comprises a variety of energy efficient indoor lighting solutions. The range includes fixed downlights, adjustable downlights for directional or key lighting, and as track lighting for focused spot lighting. Each product in the range comes in a variety of colour temperatures, shapes/sizes and brightnesses to provide a tailored lighting solution for your storefront.



3000K
5500K

ENSA 6" and 8" Fixed LED Downlights

Part No: LEDDL36WXK6R / LEDDL48WXK8R

6" and 8" LED downlights that features a high performance heatsink and integrated transformer. They are available in 3000K and 5500K models and are rated to last 50,000 hours operating time.

- LEDDL36WXK6R:**
- 3300 Lumens Light Output
 - 36W Power Consumption
 - 120° Beam Angle

- LEDDL48WXK8R:**
- 4300 Lumens Light Output
 - 48W Power Consumption
 - 120° Beam Angle



3000K
6000K

ENSA 25W 4" LED Track Light

Part No: LEDTL25WXK

The LEDTL25WXK is the perfect energy-efficient focused light solution for storefronts and in-store displays. With full tilt and rotate adjustments, the LEDTL25WXK can be configured to your exact needs.

- 1700 Lumens Light Output
- 25W Power Consumption
- Spot Beam Angle 15°

- Available in 3000K / 6000K
- Three Wire Track Adapter
- Full Tilt/Rotate Control



3000K
6000K

ENSA Fixed LED Downlight Range

Part No: LEDDL10WXK5R / LEDDL18WXK7R / LEDDL30WXK9R

The ENSA fixed downlight range provides a variety of different sized energy efficient LED downlights for fixed in-store lighting. Downlights are available in 5", 7" and 9" diameters and each models comes with its own transformer.

- LEDDL10WXK5R:**
- 900 Lumens Light Output
 - 12W Power Consumption
 - 100° Beam Angle / 3000K & 6000K
 - 120mm Hole Cut Size

- LEDDL18WXK7R:**
- 1450 Lumens Light Output
 - 18W Power Consumption
 - 100° Beam Angle / 3000K & 6000K
 - 160mm Hole Cut Size

- LEDDL30WXK9R:**
- 2200 Lumens Light Output
 - 30W Power Consumption
 - 100° Beam Angle / 3000K & 6000K
 - 200mm Hole Cut Size



3000K
6000K

ENSA LED Panel Lighting Range

Part No: LEDPL12WXK6R / LEDPL25WXK11R

The ENSA panel light range are an ultra-thin downlight, designed for areas where conventional lighting may be difficult to install. Each panel light in the range has a depth of only 13mm. Each model also comes with its own transformer.

- LEDPL12WXK6R:**
- 900 Lumens Light Output
 - 12W Power Consumption
 - 100° Beam Angle / 3000K & 6000K
 - 160mm Hole Cut Size

- LEDPL25WXK11R:**
- 1700 Lumens Light Output
 - 25W Power Consumption
 - 100° Beam Angle / 3000K & 6000K
 - 285mm Hole Cut Size



3000K
6000K

ENSA Adjustable Mini LED Downlights

Part No: LEDDL11WXK4RD

The ENSA adjustable mini LED downlights are a compact energy efficient lighting solution. Used effectively for key lighting in product displays. Each model comes with its own transformer.

LEDDL11WXK4RD:

- 950 Lumens Light Output
- 11W Power Consumption
- Dimmable Control / 60° Beam Angle
- 75mm Hole Cut Size



3000K
5500K

ENSA Adjustable 60W LED Downlight

Part No: LEDDL60WXKR

The ENSA adjustable 60W LED downlight is the most powerful downlight in the ENSA range. It features superior heat dissipation technology and has a lifespan of over 50,000 hours.

Features:

- 6000 Lumens Light Output
- 60W Power Consumption
- 60° Beam Angle
- Adjustable - Tilts & Rotates
- High Quality Samsung LEDs
- 215mm Hole Cut Size



ENSA Adjustable LED Downlights

Part No: LEDDL20WXKR / LEDDL38WXKR

Each product in the ENSA round LED downlight range features high quality Samsung™ LEDs for superior light output; an adjustable inner housing to change lamp direction; durable power supply; and a stylish white downlight surround with mounting clips.

Common Specifications Across Range:

- High Quality Samsung LEDs
- 60° Beam Angle
- Adjustable Housing - Tilts & Rotate
- 90-260VAC Input Voltage

LEDDL20WXKR:

- 1800 Lumens Light Output
- 20W Power Consumption
- 165mm Hole Cut Size

LEDDL38WXKR:

- 3400 Lumens Light Output
- 38W Power Consumption
- 165mm Hole Cut Size



ENSA Adjustable Rectangular LED Downlights

Part No: LEDDL20WXKS / LEDDL48WXKS

Each product in the ENSA rectangular LED downlight range features high quality Samsung™ LEDs for superior light output; an adjustable inner housing to change lamp direction; durable power supply; and a stylish white downlight surround with mounting clips.

Common Specifications Across Range:

- High Quality Samsung LEDs
- 120° Beam Angle
- Adjustable Housing - Tilts 60°
- 90-260VAC Input Voltage

LEDDL20WXKS:

- 1800 Lumens Light Output
- 20W Power Consumption
- 227 x 130mm Hole Cut Size

LEDDL48WXKS:

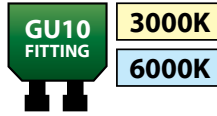
- 4400 Lumens Light Output
- 48W Power Consumption
- 227 x 130mm Hole Cut Size

3000K
5500K

ENSA 4W GU10 MR16 Downlights

Part No: LEDGL4WGU3K45D / 6K45D

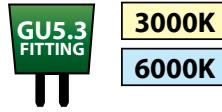
Power Consumption: 4W
Lamp Flux: 320lm
Beam Angle: 45°
Base Fixture: GU10
Input Voltage: 85-265 AC/DC



ENSA 4W GU5.3 MR16 Downlights

Part No: LEDGL4WMMR3K45D / 6K45D

Power Consumption: 4W
Lamp Flux: 320lm
Beam Angle: 45°
Base Fixture: GU5.3
Input Voltage: 12V AC/DC



ENSA 7W GU5.3 MR16 Downlights

Part No: LEDGL7WMMR3K40D / 5K40D

Power Consumption: 7W
Lamp Flux: 450lm
Beam Angle: 40°
Base Fixture: GU5.3
Input Voltage: 12V AC/DC



ENSA 9W GU10 MR16 Downlights

Part No: LEDGL9WGU27K60D / 3K60D / 5K60D

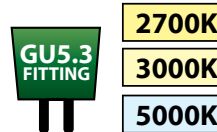
Power Consumption: 9W
Lamp Flux: 550lm
Beam Angle: 60°
Base Fixture: GU10
Input Voltage: 100-240V AC 50-60Hz



ENSA 9W GU5.3 MR16 Downlights

Part No: LEDGL9WMMR27K60D / 3K60D / 5K60D

Power Consumption: 9W
Lamp Flux: 550lm
Beam Angle: 60°
Base Fixture: GU5.3
Input Voltage: 12V AC/DC



Mounting Kit for MR16 LED Downlights

Part No: LEDGUKIT

- 45° Tilt Adjustable White Downlight Gimble Casing (**LEDGIMBLE**)
- 1x GU10 Lamp Holder with mounting Bracket & Cable (**LEDGULH**)
- 1x Insulated Power Cable
- Hole Cut Size: Ø92mm



Mounting Kit for MR16 LED Downlights

Part No: LEDMRKIT

- 45° Tilt Adjustable White Downlight Gimble Casing (**LEDGIMBLE**)
- 1x Low Voltage Transformer (**LEDTRANS**)
- 1x Insulated Power Cable & GU5.3 Connector Cable
- Hole Cut Size: Ø92mm

1. DEFINITION

The expression "The Company", when referred to in these Terms and Conditions, refers to CORNICK PTY LTD ABN 74 001 621 610.

2. GENERAL

These Terms and Conditions of Sales apply to the sales of goods and services manufactured or supplied by The Company.

Any order received by The Company is deemed to be an order incorporating these Terms and Conditions and no variation or cancellation of any of these Terms and Conditions shall be binding on The Company unless assented to by The Company in writing. Each order placed by the customer shall be & be deemed to be a representation by it, made at the time that it is solvent & able to pay all of its debts as & when they fall due. Failure to pay The Company in accordance with these terms shall be & be deemed to be conclusive evidence that the customer had no reasonable grounds for making the representation hereof & that the representations were unconscionable, misleading and deceptive.

3. ACCEPTANCE

Any quotation by The Company is not to be construed as an offer or obligation to sell and The Company reserves the right, at its option, to accept or reject any orders received.

4. PRICES

All prices charged/quoted shall be The Company's prices ruling at the date of despatch. Verbal quotations are subject to written confirmation which will be given when requested. All goods are sold and all prices are quoted FOB ex-works The Company unless otherwise specified. The Company reserves the right at any time to make reasonable adjustments of prices in relation to fluctuations in The Company's cost of labour, material, goods or transport and also in relation to any changes in currency exchange rates or duty which affect The Company's costs for imported goods. Unless expressly noted all prices charged/quoted are exclusive of GST. All government imposts of GST or any equivalent as separately itemised on The Company's invoices are to the customer's account.

5. CANCELLATION OR VARIATION

A contract may, at The Company's option, be terminated in the event of insolvency of the purchaser or the purchaser being placed in liquidation, whether voluntarily or otherwise. A purchaser may only vary an order if such variation is accepted by The Company in writing and any variation or cancellation may only occur on terms which will provide for The Company to be indemnified by the purchaser against any loss or damages. Cancellations will attract a cancellation fee and must be at least 90 days prior to current due delivery date. No cancellation will be accepted on indented products. Re-schedules must be at least 45 days prior to the current due delivery date and any item may be deferred only once, up to a maximum of 90 days from the original requested date.

6. PACKING

Unless otherwise indicated prices include standard cases or packing.

7. DELIVERY

Unless otherwise stated in writing the price quoted is ex The Company's store where stocked. Where delivery is requested beyond this point The Company may, at its discretion, agree to act as agent for the purchaser in this matter and all costs for cartage and insurance will be for the purchaser's account.

8. TERMS OF PAYMENT

Cash on Delivery otherwise expressly agreed to in writing. The Company reserves the right to deliver and invoice any item or items comprising the whole or part of any order. Failure of The Company to deliver any part of an order shall not entitle the purchaser to repudiate the contract.

9. CLAIMS

The following conditions relating to the return of goods for credit apply to all goods returned for this purpose.

9.1 Goods returned must be accompanied by a Delivery Docket stating original invoice number, date of purchase and reason for return.

9.2 Non-standard equipment made to special order cannot be credited under any circumstances.

9.3 Inward freight packing and delivery charges are the responsibility of the purchaser.

9.4 Goods will only be accepted for credit to the extent of that wrongly or over-supplied.

9.5 All returns must be in good order and condition, unused and in original packaging. No claims by the purchaser need be recognised unless made in writing within fourteen days after delivery of the goods to the purchaser.

9.6 No claim for damage or resultant expense direct or indirect in respect of any goods shall in any case exceed the invoice price of the goods in respect of any damages or expense shall arise. All damage or expense over and above such invoice shall be the responsibility of the purchaser.

9.7 The company may elect to accept return of new and unused goods from customers, at its discretion. In this circumstance the company reserves the right to charge a restocking fee, as it sees fit.

10. CONDITIONS AND WARRANTIES

All conditions and warranties expressed or implied by statute, the common law equity trade custom or usage or otherwise howsoever are hereby expressly excluded to the maximum extent permitted by law. Where so permitted the liability of The Company for a breach of a condition or warranty that cannot be excluded is limited (at The Company's option) to the replacement or repair of the goods or the supply of equivalent goods or the cost of replacing or repairing the goods or of acquiring equivalent goods. The Company shall not be liable in any way whatsoever for indirect or consequential loss or damage whatsoever (whether based on tort or contract or otherwise). It is a condition of this contract that the purchaser shall not use the goods for the installation in or in association with aircraft. Goods are not authorised for use in life support devices, systems intended for surgical implant into the body or for applications intended to support or sustain life or where the failure of the product would ordinarily create a situation where personal injury or death is likely to occur. In the event the goods are so incorrectly used, The Company shall be exempt from all liability whatsoever and the purchaser hereby indemnifies The Company in respect of any claims, demands, suits or proceedings whatsoever resulting from such misuse of the goods. The Company warrants its products to be in conformance with its own plans and specifications and to be free from defects in materials and workmanship under normal use and service for 12 months from the date stamp control on the product, or for products not having a date stamp, for twelve months from the date of original purchase unless the installation instructions or catalogue sets forth a shorter period, in which case the shorter period shall apply. The Company's obligation shall be limited to repairing or replacing, at its option, free of charge for materials or labor, any part which is proved not in compliance with The Company's specifications or proves defective in materials or workmanship under normal use and service. The Company shall have no obligation under this Limited Warranty or otherwise if the product is altered or improperly repaired or serviced by anyone other than The Company. For warranty service, return transportation prepaid, to 9 Hannabus Place McGraths Hill NSW 2756 Australia.

There are no warranties, expressed or implied, of merchant ability, or fitness for a particular purpose or otherwise, which extend beyond the description on the face hereof. In no case shall The Company be liable to anyone for any consequential or incidental damages for breach of this or any other warranty, express or implied, or upon any other basis of liability whatsoever, even the loss or damage is caused by its own negligence or fault. The Company does not represent that the products it sells may not be compromised or circumvented; that the products will prevent any personal injury or property loss by burglary, robbery, fire or otherwise; or that the products will in all cases provide adequate warning or protection. Customer understands that a properly installed and maintained alarm system may only reduce the risk of a burglary, robbery, or fire without warning, but it is not insurance or a guarantee that such will not occur or that there will be no personal injury or property loss as a result.

Consequently, The Company shall have no liability for any personal injury; property damage or other loss based on a claim the product failed to give any warning. However, if The Company is held liable, whether directly or indirectly, for any loss or damage arising under this limited warranty or otherwise, regardless of cause or origin, The Company's maximum liability shall not in any case exceed the purchase price of the product, which shall be the complete and exclusive remedy against The Company. This warranty replaces any previous warranties and is the only warranty made by The Company on this product. No increase or alteration, written or verbal, of the obligations of this Limited Warranty is authorised.

11. TITLE TO GOODS

11.1 Notwithstanding delivery of the goods to the purchaser, until the purchaser has effected full payment for the Goods and any other goods previously supplied by The Company:

- a) legal title to the Goods will remain with The Company;
- b) the risk in the Goods will pass to the purchaser on delivery to the purchaser or its agent;
- c) the relationship between The Company and the purchaser will be fiduciary;

11.2 The Purchaser will:

- a) hold the Goods as bailee for The Company;
- b) keep the goods separate from other goods; and
- c) label the goods so that they are identifiable as the goods of The Company;

11.3 With The Company's consent (which is given) the purchaser is at liberty to sell the Goods, in the ordinary course of the purchaser's business, provided that the money from the sale will:

- a) be held in a separate account in trust for the vendor;
- b) not be mingled with other money; and
- c) not be placed into an overdrawn account

11.4 The purchaser is not an agent of The Company in any sale of the Goods by the purchaser.

11.5 After the happening of an Event of Default, the vendor may without demand retake possession of the Goods and may without notice sell the Goods on such terms and in such a manner as it determines and will be entitled to deduct all expenses incurred. For the purposes of recovering possession and without limiting the generality of the foregoing, the purchaser irrevocably authorises and licenses The Company and its servants and agents to enter any premises where any Goods may be stored and to take possession of the Goods.

12. RISKS

Risk in the goods purchased shall, unless otherwise agreed in writing, pass to the purchaser upon delivery of the goods to the purchaser or his agent or to a carrier commissioned by the purchaser.

13. PATENTS

To the best of The Company's knowledge goods sold to the purchaser will not infringe any patent, trade mark, registered design or copyright of any third party but The Company shall in no circumstances be liable to the purchaser in respect of any such infringement constituted by the sale or use of the goods.

14. PERFORMANCE AND REPRESENTATION

Any figures or estimates given for performance of goods are based upon The Company's experience and are such as The Company would expect to obtain on test. But The Company will only accept liability for failure to obtain the figures or estimates given when such figures or estimates are guaranteed in writing within specified margins. The purchaser acknowledges that neither The Company nor any person purporting to act on its behalf has made any representation or given any promise or undertaking which is not expressly set out in the contract whether as to the fitness of the goods for any particular purpose or any other matter.

15. RECOVERY OF COSTS

The customer will pay to The Company any costs and expenses incurred by it or its solicitors, legal advisers, mercantile agents and other parties acting on The Company's behalf in respect of anything instituted or being considered against the customer whether for debt, possession of any goods or otherwise.

16. FORCE MAJEUR

The Company will not be in default or in breach of any contract with the customer by as a result of Force Majeur. Force Majeur means beyond the reasonable control of The Company and includes any strike or lockout either directly or indirectly by any supplier of goods or services.

17. LEGAL CONSTRUCTION

Except as may be otherwise agreed by The Company, the contract shall be governed by the laws of the State of NSW.



Find Our Latest Range,
Pricing & Specials Online
www.rhinoco.com.au

1

Find the Latest Brochures & Product Info

- Our website is the most dynamic and changing source of information on our range.
- Find the latest brochures, catalogues, sample footage, product demonstrations, manuals and quick start guides at any time of day using our website.

2

Sign Up for Exclusive Email Specials

- RhinoCo sends monthly email specials to subscribed customers, highlighting new products and special offers! RhinoCo also sends weekly, 24 and 48 hour specials with the best value limited-time offers!
- Contact sales@rhino.com.au to start receiving these incredible offers.

3

Apply for a Trade Login

- Take full advantage of the RhinoCo website by applying for a trade login.
- Order online, view pricing and see the latest specials through your trade login!
- Apply today by visiting our website!



SINCE 1978

RUN WITH US!



WE ARE YOUR ENGINEERING DESIGN HOUSE

INTERNATIONAL HEADQUARTERS & BRANCHES



AUSTRALIA HEAD OFFICE

9 Hannabus Place, McGraths Hill NSW 2756, Australia
Phone: (+61) 2 9671 6711 Fax: (+61) 2 4577 4885

HABERFIELD BRANCH

223 Ramsay Street, Haberfield NSW 2045, Australia
Phone: (+61) 2 9671 6711 Fax: (+61) 2 9799 2024

VILLAWOOD BRANCH

71 Middleton Road, Villawood NSW 2163, Australia
Phone: (+61) 2 9671 6711 Fax: (+61) 2 9743 8590

INTERNATIONAL SALES OFFICES & MANUFACTURING



UK SALES OFFICE

Conifer Yard, Shawbury Park Farm
Shawbury, Shrewsbury, SY4 4JP
Phone: (+44) 0845 644 5421
Fax: (+44) 0845 644 5431
Email: sales@rhinoco.co.uk



ITALY SALES OFFICE

24 Piazza Garibaldi, 98034, Francavilla Di Sicilia (ME)
Phone: (+39) 0942 966315
After Hours: (+39) 0908 969638
Email: sales@rhinoco.it



NEW ZEALAND OFFICE

68D Paul Matthews Drive, Albany, Auckland, NZ 0751
Phone: (+64) 9 476 8052 Fax: (+64) 9 476 8059
Email: sales@rhinoco.co.nz



CHINA SALES OFFICE

Phone: (+86) 755 837 45889
Email: china@rhinoco.com.au



KOREA SALES OFFICE

Phone: (+82) 32 833300
Email: korea@rhinoco.com.au



TAIWAN SALES OFFICE

Phone: (+886) 6355 188
Email: taiwan@rhinoco.com.au

Inspired Electronic Security Since 1978

sales@rhino.com.au • www.rhino.com.au

Specifications may vary without notice. Products may vary from illustrations. For full terms and conditions of sale please visit our website.
RhinoCo Technology Copyright © 2014 All Rights Reserved. Reproduction in whole or part is prohibited without the written consent of the company.