



YOU DESERVE TO FEEL SAFE SECURE & PROTECTED!

www.watchguardalarms.com.au





Alarms & Surveillance Products



'RETAIL READY' SURVEILLANCE SYSTEMS

Solar Powered Floodlight	61
Complete 4 Channel DVR & Cameras Pack	62
Replica (Dummy) Security Products	64



BACK TO BASE MONITORED ALARM SYSTEMS

Wireless Alarm System for Home & Office	66
Wireless Fire Detection System	66
Wireless Emergency Duress System	66



WIRELESS & HARDWIRED ALARM SYSTEM

Wireless Alarm Systems & Accessories	67
Universal Transmitters & Receivers	70
Wireless Mini Alarms	72
Hardwired Alarm Systems & Accessories	73



FIRE SAFETY PRODUCTS

Fire Blanket	72
Photoelectric Smoke Alarms	72
Ionisation Smoke Alarms	72



ELECTRONIC ARTICLE SURVEILLANCE (EAS)

Doorway Readers	79
RF Tag	79
RF Labels	79
Magnetic Detacher	79



ENERGY SAVING PRODUCTS

Energy Saving Master/Slave Powerboard.....	80
Energy Saving Light Switch	80
Energy Saving Power Point	80

Brightest Ever!



NEW!



SOLAR POWERED FLOODLIGHT with MOTION SENSING ACTIVATION

The Watchguard™ Solar Powered Mini Floodlight uses 36 super bright LEDs to provide clear light sufficient to illuminate pathways, driveways, entranceways and general areas. Powered by a rechargeable battery in a weatherproof housing, the fitting can be easily installed in any location without the need for mains power to be present. The battery is charged by the solar panel supplied with the unit. The solar panel comes with 4 metre of cable allowing it to be remotely mounted and angled to catch the best sun. The Solar Floodlight has a built in motion detector which senses movement within a 5 metre range and turns the light on. This turns the light into an effective security or safety light around buildings, yards, gates or sheds without the need or waste of lights running all night unnecessarily.

PACKAGE INCLUDES:

1 x Crystalline Silicon Solar Panel

- Photo-voltaic technology
- With 4m power connection cable to the floodlight
- Separate from floodlight for fixable mounting position
- Tilt angle adjustment to catch the best sunlight

1 x Super Bright LED Floodlight

- Super bright with 36 LEDs
- Passive Infrared motion detector (5m detection range)
- Light ON when motion detected & automatically OFF after 30 sec
- Weatherproof housing IP44 rated

5 x Screws and Anchors

- 2 x screws & anchors for floodlight
- 3 x screws & anchors for solar panel



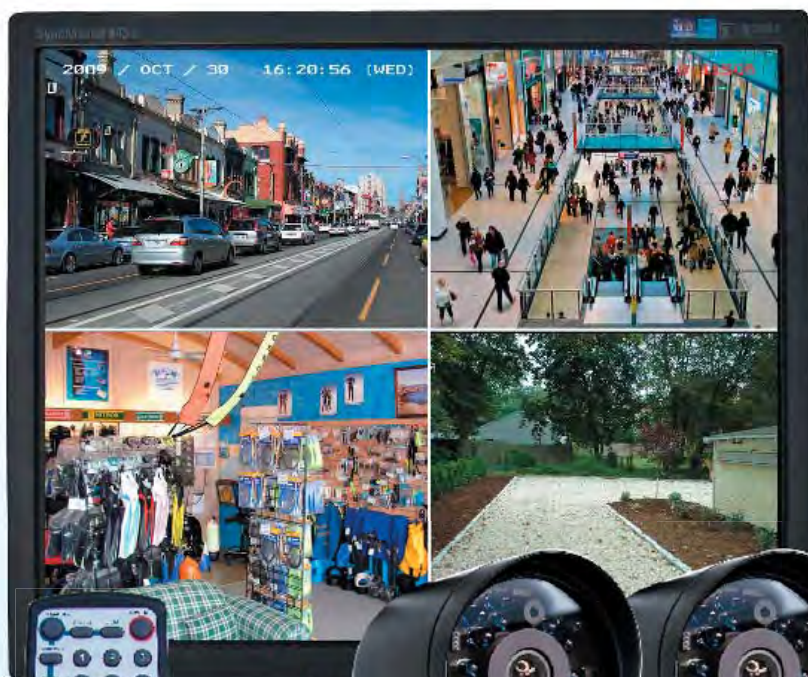
Ideal For : Patios • Yards • Drives • Barns • Sheds • Gardens

Part No.
WGSMF

'RETAIL READY' PACKAGED SURVEILLANCE SYSTEMS



- **SHOPLIFTING**
- **EMPLOYEE THEFT**
- **VANDALISM**
- **CRIMINAL ACTIVITY**
- **HARRASSMENT**
- **INSURANCE FRAUD**
- **PROBLEMS AT HOME**
- **CUSTOMER DISPUTES**



WATCH OVER INTERNET!



Monitor Not Included

Complete 4 Channel Watchguard H.264 DVR and Camera Kit with 500GB HDD

This high resolution surveillance package is ideal for a home or small business wanting to set up a digital surveillance system with network and remote access. The kit features H.264 Video Compression Technology, real time live display, recording rates of 704x576 (25fps), 704x288 (50fps), 352x288 (100fps), USB and Network backup functions as well as 4 x 15M IR Cameras with a resolution of 480TVL. The system includes a 500GB HDD.

Package Includes



4 x Day / Night Weatherproof Colour Cameras

This is an outdoor camera with 15M IR range. It has 14 in-built IR LEDs, giving the camera high visibility and clarity in both day and night applications. The weatherproof outdoor housing is Standards Approved, rated IP67, and is very easy to install.

Image Sensor	1/3" Colour CCD image sensor
Horizontal Resolution	480 TVL
Lens	f3.6mm@F2.0
Minimum Illumination	0.3 Lux@F2.0, 0 Lux (IR on)
Power	12VDC
Dimensions	116.13(L) x 60(W) x 79.58(H)mm



1 x 4 Channel H.264 Digital Video Recorder

- Advanced H.264 video compression
- Recording rates: 704 x 576 (25fps), 704 x 288 (50fps), 352 x 288 (100fps)
- 500GB hard drive
- VGA & Composite Video BNC out
- Easy to operate - just like a VCR
- IR remote
- Can be connected to a PC for remote viewing
- Real time live display
- USB / network backup

Video Compression Format	H.264
Recording Resolutions	704 x 576, 704x288, 352x288
Max. Recording Frame Rate	100FPS Global
Max. Display Frame Rate	100FPS 'Real - Time Display'
Backup Methods	Network Remote & USB Backup.
Hard Drive Bays	1 x SATA HDD (1TB Capacity)
Network Functionality	Live Monitoring, Remote Playback, File Backup, Remote Configuration



4 x Camera Connection Cables

- Pre-terminated combined DC power & video (2 x 10m, 1x 20m, 1x 30m)



1 x Monitor Connection Cable

- Allows you to connect the BNC monitor output from the DVR to the RCA video input on your TV / VCR



2 x Switch Mode Low Voltage Power Supplies

- 1 x 3Amp 12VDC supply for use with the power split cable to power all cameras
- 1 x 2Amp 19VDC power supply for use with the DVR
- Advanced switch mode technology



1 x Power Split Cable

- Allows you to connect all 4 cameras to 1 power supply



1 x Network Cable (Optional Use)

- Allows you to connect the LAN port on the DVR to your PC or network to facilitate remote viewing or backup functions

Part No.

DVR4ENTPACK3

REPLICA (DUMMY) SECURITY PRODUCTS



Professional Outdoor Replica CCTV Camera With Weatherproof Housing

This realistic looking replica CCTV camera acts as a deterrent to would be criminals. It has a weatherproof outdoor housing and the dummy camera has a red flashing LED. The kit comes with two high-visibility warning stickers, and includes all necessary hardware. No cables are required for operation, making installation very easy.

Part No.
VSCD420F



Professional Indoor Replica CCTV Camera

- True professional appearance
- Stylish design
- Dummy camera with replica auto iris lens
- 2 x high visibility warning stickers
- Installation hardware included
- No wiring needed
- Camera includes flashing red LED (optional use. Requires 2 x AAA batteries)
- Wall mounting bracket with tilt / swivel adjustment

Part No.
VSCDF



Professional Indoor/Outdoor Replica Infrared CCTV Camera

- True professional appearance
- Stylish design
- Modelled on popular day/night weather proof cameras now commonly used in the CCTV industry
- Camera includes flashing red LED - (optional use. Requires 2 x AA batteries)
- 2 x high visibility warning stickers
- Installation hardware included
- No wiring needed
- Wall mounting bracket with tilt / swivel adjustment

Part No.
VSCD50F



Professional Indoor Replica CCTV Dome Camera

- True professional appearance
- Dummy dome camera with lens
- 2 x high visibility warning stickers
- Installation hardware included
- No wiring needed
- Camera includes flashing red LED (optional use. Requires 2 x AA batteries)

Part No.
VSCDDF



Dummy Home Alarm Kit

Imitation home alarm kit
 Realistic appearance outdoor siren / strobe
 Deters criminals
 Simple installation
 Supplied with UV-resistant warning labels & mounting hardware

Part No.

DUMMYHA



European Style Dummy Home Alarm Kit

European style
 Imitation home alarm kit
 Realistic appearance outdoor siren / strobe
 Deters criminals
 Simple installation
 Supplied with UV-resistant warning labels & mounting hardware

Part No.

TSSDHA



Alarm Warning Stickers (4 pack) A4 Size

Pack contains 4 A4 sized Alarm Warning Stickers.
 2 x Rear Adhesive Stickers for use on flat surfaces
 2 x Front Adhesive Stickers for use on interior windows

Part No.

VSCDSA

PROFESSIONAL BACK TO BASE MONITORED WIRELESS ALARM SYSTEMS FOR HOME OR OFFICE

The Watchguard™ Digital Series is a true revolution in monitored back to base alarm systems. Utilising a compact main control unit with inbuilt communication dialer and advanced wireless component technology means installation is very simple. The wireless design allows you to expand or relocate any of the systems at anytime. They are truly "plug & secure" systems, without any complicated programming or cabling. See below and over page for full system features, operation and expansion details. Remote programming software download available.

MAIN FEATURES:

- Expandable up to 8 individual zones
- Easy to install & operate
- Around the clock 24hr protection
- Connects to existing phone line
- Automatically communicates with back to base monitoring centres
- Contact ID Protocol

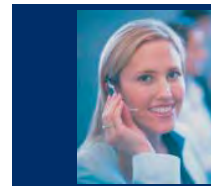
HOW THIS SYSTEM WORKS:



When smoke, intruder or help signal is detected, an alarm signal will send to the communication dialer



This is the "brain" of the system, when an alarm code is received from the Movement Sensor, Smoke Sensor or Panic Button, the communication dialer automatically connects to your monitoring centre via your phone line & transmits the detailed alarm activation data in (Contact ID Format). The in-built alarm siren will also sound, but can be disabled if used as a "Hold-up Button".



Alarm Monitoring Centre

The communication dialer connects to your monitoring centre and they will notify security, police, fire or medical services when an emergency arises. Please contact your preferred monitoring service provider to discuss their individual monitoring service plans, notification method and charges.



You will also receive notification of the alarm event: "Hello John. This is Sally from the monitoring centre. Your alarm system at 3 Main Street Springville has been activated at 11:14am by the smoke sensor in your master bedroom."



Professional Grade Back To Base Monitored Wireless Alarm System for Home or Office

The WGDIGITAL is a high-quality, anti-intruder professional grade monitored security system. Once installed, simply use the remote control button to arm the system before you leave your premises. If movement is detected after the system has been armed, the communication dialer will transmit the detailed alarm activation data (Contact ID Format) via phone line to your monitoring centre for appropriate response action to be taken.

System Includes:

- 1 x Main Control Unit - Communication Dialer
- 2 x Wireless Movement Sensors - Designed to detect the body movement of an intruder inside your premises.
- 2 x Code Hopping Remote Controls - Allows you to easily arm and disarm the system or activate the panic facility from virtually anywhere around your premises.
- 1 x Power Supply & 1 x Phone Connection Lead - Contact ID Protocol

Part No.
WGDIGITAL



Professional Grade Back To Base Monitored Wireless Fire Detection System for Home or Office

The WGSMOKE is a high-quality, monitored wireless fire detection system which is quick and easy to install and operate. When smoke is detected not only will the smoke sensor's in-built siren sound, but the alarm siren built into the main control unit will also sound in unison. The communication dialer will transmit the detailed alarm activation data (Contact ID Format) via phone line to your monitoring centre for appropriate response action to be taken.

System Includes:

- 1 x Main Control Unit - Communication Dialer
- 2 x Wireless Smoke Sensors - AS/NZS 3786:1993. Designed to detect the presence of smoke inside your premises using gas ionisation technology. In-built siren & low battery warning.
- 1 x Power Supply & 1 x Phone Connection Lead - Contact ID Protocol

Part No.
WGSMOKE



Professional Grade Back To Base Monitored Wireless Emergency Duress System

The WGEDS is a system which in the case of emergency or duress is manually activated by pressing the wireless panic button to alert your monitoring centre. Once a button is pressed detailed alarm activation data in (Contact ID Format) is immediately sent via your phone line to your monitoring centre for appropriate response action to be taken. Up to 8 individual emergency buttons can be used with your Watchguard Emergency Duress System and each button can be individually identified by the monitoring centre (i.e. Grandma's button, Grandpa's button...etc).

Includes:

- 1 x Main Control Unit - Communication Dialer
- 2 x Wireless Emergency Panic Buttons - Designed with the elderly or invalid person in mind. Large rubber button. Nylon lanyard included. Splashproof. Dipswitch coding. Operating range up to 100m (line of sight)
- 1 x Power Supply & 1 x Phone Connection Lead - Contact ID Protocol

Part No.
WGEDS

WIRELESS ALARM SYSTEMS WITH 2-WAY COMMUNICATION VIA SMS MESSAGING

NEW!



**Ideal for Home, Business,
Marine or Caravan!**



Watchguard SMS 2010 Alarm System

The Watchguard SMS 2010 is a true revolution in monitored home & mobile security systems. It has been designed specifically to provide simple installation and maximum protection at an affordable price. It can be used across a range of applications, including caravans, boats, building sites etc. or anywhere where a portable, self-monitored alarm is required. It is a sophisticated system, utilising the latest in GSM communication and wireless alarm technology. The Watchguard SMS 2010 communicates to your mobile via a GSM mobile phone network. A suitable SIM Card is required (not included). The SIM Card enables 2-way communication via SMS text messaging between you and your alarm.

How The System Works:

Plug & Play Setup: Security has never been so easy to install. After mounting the movement detectors in the zones to be monitored and mounting the external siren in a prominent position, simply plug the alarm module into the power pack (or connect 12VDC), turn the power key to on and you are ready to go!

Arm The Premises: Use your Remote Control to arm the Watchguard Wireless Alarm System to secure your premises. When body movement is detected in the premises, the sensors will send a message to the alarm module.

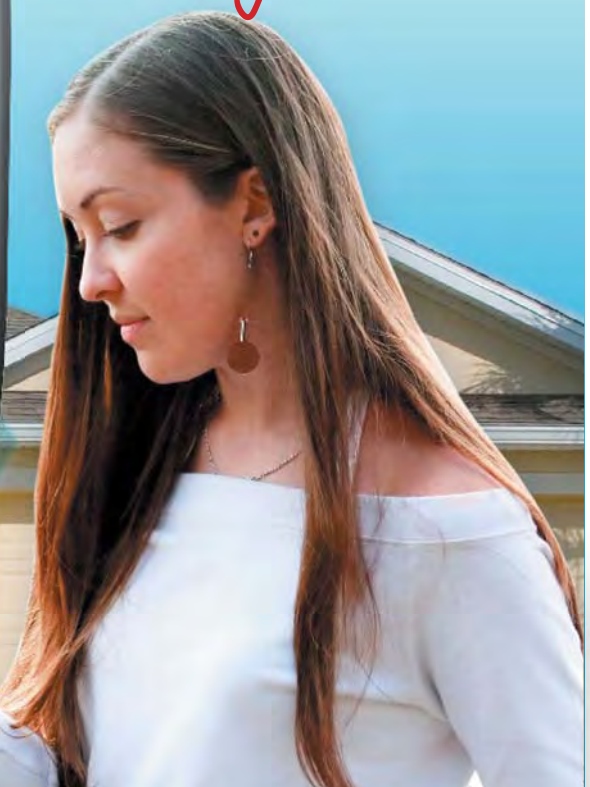
8 Zone Alarm Module with Built in GSM Modem: This is the brain of the system. When it receives the message from the Wireless Movement Sensors, it automatically sends your reported alarm to your designated mobile(s) as an SMS. The internal siren will also sound, helping repel the intruder.

Alarm Notification: The Watchguard SMS 2010 alarm module communicates to your mobile phone via GSM. When triggered, the module sends a detailed SMS of the reported alarm to your designated mobile(s). A voice message may also be sent to a landline telephone, where supported. Up to 5 people can be notified.

Package Includes:

- 1 x 8 Zone Alarm Controller Unit with built in quad band GSM modem
- 2 x Wireless PIR movement sensors
- 2 x 2 Button Code Hopping remote controls
- 1 x 12V DC Power Supply for the alarm controller unit
- 1 x Compact External Siren with Strobe

*Receive SMS Alerts
from your alarm!*



Part No.
WGSMS2010

WIRELESS ALARM SYSTEMS



Watchguard Wireless Home or Office Alarm System

The Watchguard alarm is a complete stand-alone security system, which is ideal for the home or business owner wanting an affordable security system without a monitoring service. It is very reliable and extremely easy to install and operate. If the alarm is triggered, both the external and internal sirens will sound to repel intruders.

- Feature packed 8 zone security system (can be expanded using the range of Watchguard wireless accessories incl. reed switches and smoke sensors)
- Easy wireless installation
- 2 x quality wireless passive infrared detectors
- 2 x high security code hopping remote controls with lithium batteries
- Emergency panic function via remote control
- Backup battery & mains power adaptor
- Powerful external siren with flashing blue strobe
- Has the same appearance as security industry standard alarm systems
- High frequency internal siren to repel intruders

Part No.
WGUARD



Watchguard Fire & Theft - Complete Burglary & Fire Detection System for Your Home or Office

The Watchguard Fire & Theft is a complete burglary and fire detection system suitable for your home or office. When the system detects the body movement of an intruder, or senses smoke inside your building, the alarm will activate both the internal siren as well as the external siren with flashing blue strobe. The system is very easy to use and install.

- Latest supervised wireless detector & code hopping remote technology
- Feature packed security system with simple wireless installation
- AS3786 approved wireless gas ionisation smoke sensor
- Can be expanded using the range of Watchguard wireless accessories reed switches & smoke sensors
- High frequency internal siren to repel intruders
- Professional grade, high quality components
- Emergency panic function via remote
- Backup battery & mains power adaptor
- Powerful external siren with flashing blue strobe

Part No.
WGUARDFT



Budget Wireless Home Alarm System

This is an Entry Level Wireless Alarm System designed for use in a residential setting where the owner is wanting a basic security system without external monitoring.

The kit can be installed in three easy steps:

- 1. Mount the siren in a suitable position & plug in power adapter.
- 2. Mount the wireless detector.
- 3. Press the remote control to arm or disarm the system.

The Watchguard Sentinel includes:

- 2 x Remote controls to arm/disarm the alarm and panic function
- 1 x Wireless PIR sensor to detect movement up to 12m.
- 1 x Powerful outdoor siren and strobe to deter intruders

The system can be expanded with the range of Watchguard products, including smoke detectors, reed switches, PIR sensors and additional remotes.

Part No.
WGSENTINEL

WIRELESS ALARM ACCESSORIES



Wireless External Siren

- Wireless external siren with flashing blue strobe and backup battery
- 10m of cabling pre-terminated for 'plug & secure' installation
- Includes low voltage plugpack
- Sends tamper, low battery & supervision signals

Part No.
WSIREN



Wireless Solar Siren

- Wire-free operation
- No cable required
- In-built solar panel to charge internal battery
- 40 days of continuous operation without sunlight once charged
- Incorporates powerful 105dB/M siren & blue strobe light
- High capacity 6V 1.2Ah sealed acid rechargeable battery
- Tough polycarbonate housing
- In-built tamper switch to activate siren in case of unauthorised removal
- Weatherproof for outdoor use

* Also available with interface transmitter for use with other alarm control panels (See WSSOL-WSUTX)

Part No.
WSSOL

Wireless Solar Siren & Interface Transmitter

This system allows the Watchguard™ WSSOL solar siren to be used with most brands of alarm panels. The solar siren simply mounts to any external wall and the interface transmitter is connected to the siren output on your control panel. When the siren output is activated your solar siren will sound in unison and when the panel's siren output stops the cancel signal is sent to the solar siren.



40 Days
continuous operation
without sunlight

- Compatible with most brands of alarm control panels
- 40 day continuous operation without sunlight once charged
- Powerful 105dB/M siren & blue strobe light
- Inbuilt solar panel to charge high capacity 6V 1.2Ah acid battery
- Tough polycarbonate weatherproof housing for outdoor use

Part No.
WSSOL-WSUTX



Wireless Supervised PIR Detector

- Dual Edge™ PIR Sensor Technology
- 12m detection range
- Compact & elegant design with swivel bracket for easy installation
- Intelligent power saving mode
- Up to 3 years life from 2 x CR2450 lithium batteries
- Selectable pulse count

Part No.
PIRW3



Wireless Supervised Reed Switch/Universal Transmitter

- Used on doors and windows
- Also has inbuilt terminals for use as universal transmitter
- Up to 5 years life from 2 x CR2450 lithium batteries

Part No.
WREEDI



Wireless Supervised Smoke Detector AS/NZS 3786:1993

- Gas Ionisation type
- Inbuilt piezo siren
- 9 volt alkaline battery
- Audible low battery warning

Part No.
SMODETW



Wireless Supervised PIR Detector (Outdoor)

- Fully sealed UV resistant housing for outdoor use
- 4 selectable coverage patterns (wide angle 10m, curtain 10m, long range 20m & vertical curtain 3m)
- 9 volt alkaline battery provides approx. 1 year life
- Communicates alarm, low battery & supervision signals
- Works with all of our Universal Receivers & Alarms
- High quality TAKEX sensor
- Made in Japan

Part No.
PIRWOD



Wireless Mini Numeric Keypad White

- Allows arm / disarm, home mode & panic functions
- Backlit rubber buttons
- Only 45 x 55 mm
- Code Hopping Technology
- Wall mount or portable
- Selectable 4 digit PIN number

Part No.
WKP



Large Wireless Numeric Keypad

- Large conventional size wall mountable keypad with flipdown front cover
- Allows arming & disarming of your system via PIN number
- 9 volt battery powered
- User programmable 4-digit PIN code
- Low battery indicator
- Back lit keys for night time illumination
- Weatherproof for indoor or outdoor use (under cover)
- For use on WGDIGITAL only

Part No.
WKPL



Personal Emergency/Panic Pendant

- Two internal switches meets new standard compliance for hold up buttons
- Designed with the elderly or invalid person in mind
- Large easy push rubber button
- Nylon lanyard included allows it to be worn safely around the neck
- Splashproof design
- Dipswitch coding

Part No.
WPANIC



Wireless Emergency Duress "Mushroom" Button

- Large industrial grade switch
- Inbuilt fixed code transmitter
- LED indicators for activation and low battery
- Optional external power supply

Part No.
MBTX



NEW!

Auto Tracking Day and Night Camera with inbuilt PIR Motion Sensor

New from Watchguard, this Auto Tracking PIR Camera is a revolutionary combination product ideal for use in industrial, commercial or residential applications. The CCTV camera and in-built PIR motion sensor allow it to follow a subject across a 180° range. What sets the VSTRACKCAM apart from other products is that the subject only needs to be within the whole 180° surveillance zone for the camera to begin tracking, making it much more effective at detecting potential burglars, shoplifters or trespassers. To accomplish this, the camera has three built-in surveillance modes: Track and Follow Object, Fixed Surveillance on specified area and Regular panning scan of surveillance area.

The product is contained in an IP44 ABS resistant housing and includes an anti-tamper switch for greater tamper protection.

Features:

- Anti-Tamper Switch
- Built-in relay out video trigger for DVR or Alarm
- Day and Night Operation
- Very easy to use - can be set up in minutes
- Utilises three dual-element PIR sensors with the latest dual-thermostat protection
- Built-in High Gain Mic
- Three Surveillance Modes
 - Tracks and Follow an object
 - Fixed surveillance on a specified area
 - Regular panning scan of the surveillance area



Part No.
VSTRACKCAM

UNIVERSAL TRANSMITTERS & RECEIVERS



NEW!

4 channel version now available!

2 Channel Transmitter / Receiver Set - 433.92 MHz

This product is designed to be simple and easy to use. It has simple wiring connections and can be used in a variety of applications. Primarily, this product can be used to remote control your car, garage door, home alarm system, or your electric gate. The number of items to which you can interface is almost endless. The unit is supplied with 2, dual button remote controls which have an operating range of approximately 100 metres (line of sight subject to environmental conditions). The remote controls for this unit operate using code hopping technology. This is otherwise known as anti code grabbing or anti scanning type. This leading-edge technology prevents unauthorised copying of your remote control. This technology sends a unique and different code each time any of the remote control buttons are pressed.

- 1 second (momentary) negative outputs for each channel
- Separate latched negative output for channel 1
- Flashing 12V LED output for channel 1, i.e.- flashes when the button is pressed, stops when it is pressed again
- Can store up to 15 remote controls in total
- Up to 100m radio frequency range (line of sight)

Suitable for use with:

Electric garages / gates	Vehicle central locking
Home security systems	To replace your old, large & low security remotes

Part No.
RCX
RCX4



Universal Transmitter / Receiver Set for Alarm Control Panels - 433.92 MHz

This 8 Channel wireless narrow-band UHF 433.92MHz receiver / transmitter set will allow you to add remote on/off & panic functions to your alarm panel. It will also allow you to add up to 4 wireless sensors to your existing hardwired alarm panel. The unit is supplied with 2 x remote controls which have an operating range of approximately 100 metres (line of sight - subject to environmental conditions).

- Code hopping remote control technology
- Remote functions include arm / disarm & panic
- Ability to quickly add or erase detectors from your system
- 4 wireless DETECTOR zones available
- Wireless detector supervision output
- Low battery warning output
- Detector tamper warning output
- Intelligent detector learning program to prevent accidental code duplication
- Memory recall function to identify individual detectors ending low battery or tamper codes
- Wireless detectors available include PIR's, reed switches, smoke sensors & panic buttons

Suitable for use with WIRELESS:

PIR Movement Detectors	Magnetic reed switches
Panic / duress buttons	Smoke sensors

Part No.
KISSRX



4 Channel Multi-Function Receiver / Transmitter Set - 433.92 MHz

The RXPROR4 is an advanced multi-purpose 4-channel narrow-band UHF receiver / transmitter set with fully programmable relay outputs (1 amp rating). It is supplied as standard with 2 x code hopping, 4 button remote controls with long life lithium batteries. It can be used to add Watchguard wireless alarm accessories to virtually any alarm panel or device.

- Up to 200m radio frequency range (line of sight)
- All outputs are individually programmable to suit almost any application (momentary, latched, timed or pulsed)
- Up to 5 high security code hopping remotes (anti-scan, anti-code grabbing) can be used
- Power supply requirement: 12VDC @ 500mA
- Compatible with Watchguard wireless alarm detectors
- Up to 4 wireless detectors can be used
- Supports detector low battery, supervision & tamper signal outputs
- Step by step programming via remote control & indication via feature and channel LED's

Suitable for use with:	Add wireless alarm sensors to any device	Most devices that allow remote on / off operation
To replace your old, large & low security remotes	Electric garages / gates	Home security systems

Part No.
RXPROR4



NEW!

4 Channel RF Receiver - 433.92MHz

The RXENF4 is a 4 Channel RF Receiver with 4 independently programmable output modes. When used with the TXENF4 4-Button Wireless Transmitter, this receiver can be used to control a variety of home automation devices, such as garage door openers, lights, motorised gates, lifts, or other devices, by remote control. The in-built 'Mode Switch' buttons allows for easy programming/re-programming of the channels. The receiver has 4 LEDs, one per channel, which indicate RF reception, learn mode, transmitter cleared and output type.

Features:

- Antenna transmission range of 150m (Can be extended to up to 350m with the use of the RXENF4ANT Dipole Antenna)
- RXENF4ANT External Antenna plugs directly into receiver PC Board.
- Mode switch for easy transmitter learning.
- Each receiver channel can learn the codes of 15 different transmitter buttons on a first-in, first-out basis.
- Codes are stored safely in EEPROM for up to one year in case of power loss.
- Four Form-C Dry Relay Contact (N.O./N.C./Common) Outputs. Each output rated 10 Amps at 24 VDC.
- 4 Separate Channels / 4 Output Modes Each:
 - Timed Momentary (1, 2, 3, 4, 5, 10, 30, 60 sec.)
 - Toggle (On/Off)
 - Latch (Output stays on until manually reset)
 - Continuous or Validity (Output for as long as signal is received)
- *All outputs are independently controlled. (i.e. Channel 1 can be toggle, Channel 2 can be one second momentary, etc.)

Part No.
RXENF4



NEW!

Extended Range "Dipole" Type Antenna for RXENF4

This flexible antenna is used to extend the transmission range of the RXENF4 wireless receiver an additional 300m (Open air, LoS). The antenna easily plugs into a connector on the receiver, no extra wiring is required.

Part No.
RXENF4ANT

NEW!

4 Button Code-Hopping Hand-Held Transmitter - 433.92MHz

This 4-Button Code-Hopping Hand-Held Wireless Transmitter works in conjunction with the RXENF4 Wireless Receiver to allow you to remote control garage doors, alarm panels and home automation functions.



- Extremely durable: Rubber buttons help eliminate electrostatic discharge damage. Gold-plated battery clips and contact points extend the life of the transmitter.
- The transmitter has an operating range of 150m (Open air, Line of Sight)
- Uses anti-code grabbing technology for greater security
- Over 68 Billion possible transmitting codes

*Transmitter Belt Clip Holster also available (TXENF4HOLDER)

Part No.

TXENF4

TXENF4HOLDER

WIRELESS MINI ALARMS

Ideal for the elderly, as an emergency button or for general security.



Calls up to 3 people when the button on the remote control or main unit is pressed

Wireless Help/Panic Alarm With Automatic Phone Dialer

This Help/Panic alarm with telephone dialer and RF key fob allows you to record a 10 second help message and store 3 prefixed telephone numbers of your choice. When the button on the main unit or remote is pressed it will dial the 3 preset telephone numbers. When the receiver answers the phone they will hear the recorded message and can take appropriate action. In addition, they have the option to open a two-way hands free conversation between the caller and the receiver. You can have up to 3 remotes and each one can be used up to a distance of 50m from the main unit.

Features:

- Auto dialer, up to 3 programmable telephone numbers with a maximum of 16 digits each.
- Record a personal 10 second message
- Detection Area: Max 50m long, LoS
- Easy to program
- Two-way hands free voice communication
- Use Radio 433.92MHz AM Super heterodyne receiver

Part No.

WGWHAD

Personal Alarm - 130dB loud siren

This personal alarm, also known as a personal attack or duress alarm, offers you basic protection and peace of mind. Our 130dB personal alarm is designed to draw attention to any crisis. The alarm is activated when the alarm pin is removed from the alarm body. The alarm is compact enough to fit in your pocket or handbag.



- Pull wrist cord to activate
- 130dB loud siren
- Light weight

Part No.

WGPA A



Standalone Wireless Motion Sensor Alarm

Standalone wireless motion sensor alarm, ideal for home, garage or caravan. Can be activated or deactivated by a radio remote control from up to 30m away. Sits on any surface, with no mounting required

- 130dB ultra-loud alarm
- PIR sensor detects motion up to 7m
- Can be mounted on walls or simply placed on any flat surface
- Radio remote control activates & deactivates the alarm at a range of up to 30m

Part No.

WGWMSA

FIRE SAFETY PRODUCTS

Vinyl Pouch Fire Blanket



- Approved to Australian Standard AS3504 + Standards Mark
- Ideal for use on cooking oil and stove top fires
- A compact and easy to use household fire blanket
- Essential for kitchens, where 2 out of 3 home fires start
- Manufactured from 100% Woven Glass Fibre
- Handy Vinyl Pouch allows wall hanging
- Release tapes act as handles when blanket is unfolded

Available in
- 1.8m x 1.8m
- 1.0m x 1.0m



Part No.

WGFB1.0VP

WGFB1.8VP

Photoelectric Smoke Alarm



Photoelectric Smoke Alarms consist of a light emitting diode and a light sensitive sensor. The presence of suspended smoke particles in the chamber scatters the light, which is detected, setting off the alarm. Photoelectric technology is superior to ionisation technology in detecting the visible smoke produced by smouldering fires, which most commonly occur in homes.

- Latest Photoelectric Technology
- Built-in test button
- Battery missing indicator
- Non-radioactive technology
- Extra loud alarm (sound over 85dB)



Part No.

WG1SMKP

Ionisation Smoke Alarm Twin Pack



Ionisation alarms detect the presence of large quantities of very small particles entering the ionisation chamber, when in sufficient quantity will cause an alarm to sound. Sufficient quantities of particles are generally only produced by flaming fires or from very hot surfaces. Ionisation alarms are more responsive to fires that start as, or quickly escalate into a flaming stage.

- Ionisation Sensor - sense visible or invisible particles of smoke at the earliest stage
- Easy installation (wall mount bracket & screws included)
- Extra loud alarm (sound over 85dB)



Part No.

WG2SMKI

SMS8



Australian Designed!

*mobile phone not included

8 Zone Alarm Panel & LCD Keypad

The SMS8 is our premier 8 Zone Alarm Panel and LCD Keypad, ideal for use in a home or business. The system is designed to provide personal security monitoring via your mobile phone using SMS Messaging or optional high security 24 Hour back-to-base monitoring. (*Fees Apply)

System reports are sent using the industry standard Contact ID communication protocol. The benefit of using the SMS8 to send these reports is that no SIM card is required - SMS messages are sent via your landline.

The SMS dialer function can be disabled if desired so as to operate as a regular 'dialer' alarm control panel only. The system is designed to be easily programmed, with all programming and setup done via a simple menu-driven system.

Features:

- 8 Hardwired Zones
- One button "Quick Arming" plus "Home Arming" for arming only certain areas - ie: at night you can have the sensors in living areas armed, but those in the bedrooms disarmed.
- Panic, medical and fire emergency buttons
- Key-switch input
- On board modem with Contact ID protocol for optional back-to-base monitoring
- Supports SMS text messaging of alarm information to two separate mobile phone numbers
- Telephone line fault monitoring

Specifications:

Number of Zones	8 Fully Programmable hardwired zones, including 3 keypad activated EMERGENCY soft zones	Alpha Keypad	User friendly; Menu Driven; Attractive low profile LCD keypad; Add up to 4 keypads
Circuit Type	End of Line Monitoring	Telephone Dialer	Inbuilt
Control Timing	Entry/Exit delay, Siren Time, AC Fail, Phone Line Fail	Digital Communication	Two 16 Digit Phone Numbers
Installer Code	6 Digit; required for all programming	External Output	9.5-14VDC @ 1.5Amps
User Codes	16 (4 Digit) user codes; programmable by master code (user #1)	Outputs	Siren Output - 700mA; Strobe Output - 700mA; Aux. Output - 700mA; Switch Aux Output - 200mA; All electronic fused.
Message Formats	Ademco Contact ID (CID), SMS	Reporting	Dual, split or Back-up
Power Input	16.5VAC	Cabinet Dimensions	Zinc plated CRS 0.8mm steel; 255 x 230 x 67mm (HxWxD)
Standby Battery	12V, 7AH Sealed Lead Acid Battery		



Professional Hardwired Alarm Kit for COMPLETE Home or Office Protection

If you're after a complete Home or Office alarm system, you **NEED** our SMS8KITHW. It contains a premier Watchguard™ 8 Zone alarm panel, internal and external sirens, motion sensors, reed switches and an emergency panic button. These detectors and sirens help protect **ALL** areas of your house by performing functions such as monitoring your rooms for movement, and detecting when door or windows are opened. This gives you greater peace of mind that your home is secure against thieves, burglars and vandals.



- 1 x SMS8 Alarm Control Panel with LCD Keypad
- 1 x Outdoor Siren/ Strobe
- 3 x High Quality PIR Sensors
- 1 x Indoor "Top Hat" Piezo Siren
- 4 x Surface Reed Switches for Doors or Windows
- 1 x Emergency Panic Button
- 1 x 7Ah Sealed Lead Acid Backup Battery
1 x 16VAC Power Supply
1 x 100m of 4 Core Alarm Cable

Part No.

SMS8
SMS8KITHW

WGAP816

8 Zone Alarm Panel & LCD Keypad Expandable to 16 Monitored Zones

The WGAP816 is a versatile, microprocessor-based, fully featured 8/16 Zone alarm panel, which has two partitions. The alarm panel provides immediate notification of burglary, fire, medical & panic conditions. There is a dedicated panic zone, monitored siren output, auxiliary power outputs and five (expandable to seven) programmable outputs that may be programmed to perform various trigger/switching functions.

Product Features:

- Eight programmable, end of line supervised zone inputs
- 2 Partitions
- Five programmable outputs on alarm panel. Expandable to seven when using Wired Zone Expander module
- Programmable loop response time
- Auto arm/disarm capability per partition and by day of the week. The panel can be programmed to arm/disarm at a pre-determined time
- Optional tamper reporting per zone using double end of line resistors (12k and 4k7)
- Fully programmable digital telephone communicator that supports most industry standard formats.
- Non volatile EEPROM memory retains all program and event log data in the event of a total power failure
- Excellent protection against lightning (provided by specialist "zap tracking" and transient suppressors)
- Fax defeat/answering machine override
- Dual reporting provides for duplicated reporting to two independent central base stations
- 3 quick arm modes
 - Away
 - Stay with no exit delay
 - Stay with exit delay
- 32 user codes
- Dynamic battery self test
- Low battery cut out circuit
- 500 event log
- False alarm reduction features



NEW!

OPTIONAL 8 Zone Expander

Model: WGAEXPAND

- 8 wired, end-of-line supervised zone inputs
- Optional tamper per zone using double end-of-line resistors
- Programmable loop response time
- Dedicated box tamper input
- Excellent protection against lightning (provided by specialist "Zap Tracking" and transient suppressors)
- Expander supply voltage monitoring



8/16 Zone Hardwired Alarm Kit for COMPLETE Home or Office Protection

If you're after a complete Home or Office alarm system, you **NEED** the WGAP816KIT. It contains a Watchguard™ 8/16 zone alarm panel, internal and external sirens, motion sensors, reed switches, emergency panic button and all necessary power supplies and cabling. These detectors and sirens help protect ALL areas of your house by performing functions such as monitoring your rooms for movement, and detecting when doors or windows are opened. This gives you greater peace of mind that your home is secured against thieves, burglars and vandals.



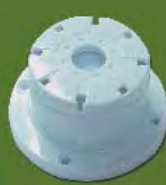
1 x 8/16 Zone Alarm Control Panel with LCD Keypad



1 x Outdoor Siren/Strobe



3 x High Quality PIR Sensors



1 x Indoor "Top Hat" Piezo Siren



4 x Surface Reed Switches for Doors or Windows



1 x Emergency Panic Button



1 x 7Ah Lead Acid Backup Battery
1 x 100M of 4 Core Alarm Cable
1 x 16VAC Power Supply

Part No.

WGAP816

WGAP816KIT

WGAP1632

16 Zone Alarm Panel & LCD Keypad Expandable to 32 Monitored Zones

The WGAP1632 is a versatile, microprocessor-based sixteen-zone Alarm Panel. There are eight partitions and the panel can be expanded to monitor a total of thirty-two burglary zones through the use of wired zone expanders (Maximum of two). Most features are optional and may be programmed directly through the LCD Alpha-numeric keypad. There is a dedicated Panic zone, monitored siren output, auxiliary power outputs and eight (expandable to twelve) programmable outputs which may be programmed to perform various trigger/switching functions.

Product Features:

- 8 Partitions, 250 user codes, 500 event log
- Programmable loop response time
- RS485 keypad bus supports two 8-zone expander modules, one remote receiver, up to 16 keypads and GSM Communicator
- 16 programmable, end-of-line supervised zone inputs
- Expandable to 32 zones via keypad zones, zone expander modules, zone doubling or wireless expansion
- Optional tamper reporting per zone using double end-of-line resistors (12k and 4k7)
- Auto arm/disarm capability per partition and by day of the week. The panel can be programmed to arm/disarm at a predetermined time
- 8 programmable outputs on Alarm Panel. Expandable to 12 when using Wired Zone Expander module
- Non-volatile EEPROM memory retains all program and even log data in the event of a total power failure.
- Event log, date and time stamped (approx. 700 events - exact number of events is dependant on the timing of the events)
- Up and download using Windows based software, either directly via RS232 or remotely using a modem
- Excellent protection against lightning (provided by specialised "zap tracking" and transient suppressors)
- Fax defeat/ answering machine override
- Dual reporting provides for duplicated reporting to two independent central base stations – or one base station and a cellphone
- Support for secure dial-in functionality using any DTMF phone
- False alarm reduction features
- Optional voice module for voice reporting and DTMF, voice-prompted remote-controlled menu
- Dynamic battery self test



NEW!

OPTIONAL 8 Zone Expander

Model: WGAPEXPAND

- 8 wired, end-of-line supervised zone inputs
- Optional tamper per zone using double end-of-line resistors
- Programmable loop response time
- Dedicated box tamper input
- Excellent protection against lightning (provided by specialist "Zap Tracking" and transient suppressors)
- Expander supply voltage monitoring

kit
WGAP1632KIT

16 Zone Hardwired Home Alarm Kit for COMPLETE Home/Commercial Building protection

If you're after complete commercial building protection, you **NEED** the WGAP1632KIT hardwired system. It contains a premier Watchguard™ 16 Zone alarm panel, internal and external sirens, motion sensors, reed switches, emergency panic button and all necessary power supplies and cabling. These detectors and sirens help protect **ALL** areas of your house by performing functions such as monitoring rooms and offices for movement, and detecting when door or windows are opened. This gives you greater peace of mind that your building is secure against thieves, burglars and vandals.



1 x 16 Zone Alarm Control Panel with LCD Keypad



1 x Outdoor Siren/Strobe



3 x High Quality PIR Sensors



1 x Indoor "Top Hat" Piezo Siren



4 x Surface Reed Switches for Doors or Windows



1 x Emergency Panic Button



1 x 7Ah Lead Acid Backup Battery
1 x 100M of 4 Core Alarm Cable
1 x 16VAC Power Supply

Part No.

WGAP1632

WGAP1632KIT

HARDWIRED ALARM ACCESSORIES



SMS8RX Wireless Receiver for SMS8 Alarm Panel

The SMS8RX is a state-of-the-art narrow band wireless receiver, designed to operate with the SMS8 control panel. It has been specifically designed to enable easy installation with a simple 2-wire interface connection and is supplied complete with 2 high security code hopping remote controls. Remote functions include arm, disarm, home mode and panic. It features intelligent wireless detector learning allowing you to quickly add or erase up to 8 detectors from your system including PIRs, reed switches, smoke sensors and panic buttons. Low battery and detector supervision are also on board.

- Code Hopping remote control technology
- Remote functions include arm/ disarm, home arm & panic
- Ability to quickly add or erase detectors from your system
- 8 wireless detector zones available
- Wireless detector supervision
- Low battery warning
- Detector tamper warning
- Intelligent detector learning program to prevent accidental code duplication
- Memory recall function to identify individual sending low battery or tamper codes
- Wireless detectors available included PIRs, internal or external
- Reed switches & smoke sensors
- Compatible with all Watchguard wireless accessories

With
Easy Wire
Serial Interface

Part No.
SMS8RX



NEW!

GSM Backup Module For Intruder Alarm Systems

In case your landline is sabotaged or is out of service, this GSM back-up device enables your security system to communicate with your monitoring centre via the mobile phone network. It utilises a high quality GSM modem and is capable of sending (independently to your panel) its own periodic phone test, phone line failure or low battery message to 4 different receiver station phone numbers, via Contact ID protocol using the GSM network. Both pulse and DTMF dialing are supported and as the unit draws less than 100mA, it can be easily powered directly from your alarm panels 12VDC power supply.

- Backup phone line function: In case of the failure of your PSTN Line, the system simulates a virtual PSTN line over the GSM mobile network.
- Encrypted GPRS-TCP/IP communication
- Default factory setting: If the connected PSTN landline is available, all calls will be made through the PSTN line. If the PSTN line ever fails, all calls will then be made via the GSM Network

Part No.
GSMBU-ZB

Want to receive SMS Alert Messages without having to pay for back to base monitoring?



Allows any panel with a Contact ID format dialer to send SMS messages

Contact ID to GSM SMS Message Text Converter

This is an add-on board that connects to your existing control panel, to convert Contact ID to SMS. It is designed for people who wish to have personal monitoring of their security control panels. This board simply connects onto the existing alarm panels communications port, the 12V supply output and onto the telephone line.

- Allows any panel with a Contact ID format dialer to send SMS messages
- Connects to standard telephone line
- Easy to install
- No SIM card required
- Maximum 16 alarm zones

Part No.
SMSIB

Universal Passive Infrared Movement Sensor

This advanced PIR body heat movement sensor is suitable for indoor use with any alarm control panel. It can detect movement up to 12m away at an angle of 110 degrees from the sensor. The detector features automatic temperature compensation to improve performance when the ambient heat level in a room changes. The adjustable pulse count function enables you to select either normal or reduced detection sensitivity levels for use in harsh environments.

- High quality dual element PIR sensor
- Micro processor controlled
- Auto temperature compensation
- Adjustable pulse count (sensitivity)
- Selectable N.O. or N.C. alarm outputs
- Selectable detection LED indicator ON / OFF
- N.C. case tamper switch



Part No.
PIRHW



Universal Movement Sensor With Triple Technology

This advanced indoor movement sensor can be used with any alarm control panel and incorporates 3 detection technologies designed to prevent false alarms. It is particularly suited for use in harsh environments where using a standard PIR may result in false alarms caused by rapid changes in heat, light levels or from other environmental factors. This triple technology detector requires both the PIR and microwave sensors to both simultaneously detect an intruder (using software signal analysis) before activating the alarm output. Detection range is approx. 12 metres.

- High quality quad element PIR sensor
- Adjustable microwave sensor with auto temperature compensation
- PIR look - down zone
- Selectable N.O. or N.C. alarm outputs
- 3 indicator LED's Green PIR, Yellow MWAVE, Red ALARM
- Selectable detection LED indicator ON / OFF
- N.C. Case tamper switch

Part No.

PIRHWTT



Model No:
PIRLHLB

Large Mounting Bracket For PIR Detectors

Suitable for use with:
- PIRHW



Model No:
PIRLHSB

Small Mounting Bracket For PIR Detectors

Suitable for use with:
- PIRHWTT

Part No.

PIRLHLB
PIRLHSB



Photoelectric Hardwired Smoke Detector

- Sensor Type: Infrared Photoelectric Diode
- Dust and insect proof
- Detection Range 20m Sq
- 12V DC

Part No.

SMODET15P



Piezo Siren

Repel an intruder from your home by installing this high frequency, super loud siren.

- Connect to the Negative On Alarm output on your alarm system
- Dimensions: 85(W) x 89(D) x 41(H) mm

Part No.

DPS



Flush Mounted Internal Siren

- Emits a high frequency oscillating siren intolerable to the human ear
- Low profile design to mount flush with ceiling
- Repel intruders from your home

Part No.

DPSF



Complete Outdoor Siren - Full Assembled AC/DC Siren, Strobe & Tamper Switch

This product has been specifically designed to save alarm installers time and money. It combines a dual power AC/DC high powered siren, high visibility blue strobe light and tamper switch. It is housed in a moisture and UV resistant attractive industry standard external casing and all cabling is pre terminated.

- Suits all alarm control panels
- No assembly required, saves time & money on installation
- Highly durable, moisture & UV resistant external housing
- Pre-terminated wiring
- High visibility blue strobe
- High powered dual AC & DC Siren
- Tamper Switch
- Includes rear protective cover



Part No.

COS



Compact External Siren With Strobe

European style external siren with integral blue strobe light, piezo siren and tamper switch

Part No.

W24SIREN



Reflex Horn Speaker

- High powered
- For use with most alarm control panels
- Includes mounting base
- Alerts occupants and neighbours of intruders

Part No.

DRHS



Single Tone Siren

- 12V DC
- 115dB single tone siren
- Mainly used with control panels with no internal siren driver

Part No.

S42



Flashing Blue Strobe Light

- Low profile blue strobe light
- Designed for use with external sirens
- Continuous rated xenon tube

Part No.

DSBM

NEW!



Surface Reed Switch (N/O Contact)

High quality Magnetic Surface Reed switch which has Normally Closed/Normally Open Contacts.

Part No.

DSRNONC



High Impact Plastic External Siren Cover

This External Siren Cover has been developed and designed as a replacement for old or damaged siren covers.

Main Features:

- Highly Durable.
- Moisture and UV resistant.
- Designed in Australia.

Part No.
DPSCY



Concealed Reed Switch

- Perfect for mounting in the tops of doors or hidden areas

- Easy "push-in" installation
- Compact design
- Dimensions(mm): 32(L) x 11(Dia.)
- White

Part No.
DCRW



Roller Shutter Reed Switch

- Strong heavy duty cast housing
- Termination contacts via a stainless steel flexible conduit
- N/C contacts

Part No.
DRSR



Large Surface Mount Reed Switch

- Surface mounted reed switch
- Industry standard
- N/C contact with solder terminals
- Dimensions(mm) Reed: 90(W) x 13(H) x 12(D)
- Magnet: 90(W) x 13(H) x 12(D)
- White

Part No.
DSRHDW



Mini Surface Mount Reed Switch

- Compact design surface mount
- Industry standard
- N/C contacts
- Dimensions (mm): Reed - 63(W) x 12(H) x 20(D)
- Magnet - 63(W) x 12(H) x 11(D)
- White

Part No.
DSRLW



On/Off Key Switch

An On/Off keyswitch with 2 keys used for various applications.

2 positions, single pole, single throw changeover switch.

Part No.
2POSSPST



12V 15A Universal Switching Relay

This is a 12V 15A Contact Rated Universal Switching Relay. The relay is contact closed when power is applied.

Part No.
REL01LOOM



Emergency Button Switch

- When pressed will instantly trigger the alarm
- N/C & N/O contacts
- Slimline design
- Dimensions(mm): 23(W) x 76(H) x 15(D)

Part No.
DEBS

NEW!



Dual Button Emergency Switch (N/O Contact)

- Dual button activation virtually eliminates accidental triggering
- Push to Close momentary contact type
- Pre-wired for quick installation
- Sturdy metal case, silver-plated spst contacts
- Rated 1Amp at 25VDC

Part No.
DEBSDUAL

NEW!



8 Zone Wired Expander for the WGAP816 and WGAP1632 Alarm Control Panels

- 8 wired, end-of-line supervised zone inputs
- Optional tamper per zone using double end-of-line resistors
- Programmable loop response time
- Dedicated box tamper input
- Excellent protection against lightning
- Expander supply voltage monitoring

Part No.
WGAPEXPAND

NEW!



Watchguard High Quality LCD Keypad for use with the WGAP816 and WGAP1632 Alarm Panels

Developed for use with the Watchguard WGAP816 and WGAP1632 Alarm Panels, this high quality LCD Keypad easily allows you to program and access your security system's functions and information. The large LCD screen displays menus and messages to inform you of your alarm status/any changes you are making. All the alarm system programming is done via the LCD Keypad. Programmable functions accessed through the keypad include auto-arming, away arming, zone bypassing and setting/changing/allocating user codes.

Part No.
WGAPKP

ELECTRONIC ARTICLE SURVEILLANCE (EAS)

EAS labels & tags are used as anti-theft devices. The tag or label is used with a doorway reader to detect if an item is being removed without authorisation. EAS systems are used mainly in retail stores, data centres, and libraries. When applied to items, the EAS tag / label is capable of activating an audible alarm as it passes through the doorway detector. Because of the anti-theft protection they provide, EAS systems allow more freedom for retail stores to display items that would usually be locked in display cases. This allows the consumer to examine the product more closely before purchasing.



Doorway Readers

Locate the doorway reader at the front entrance of the shop or the cashiers in supermarket. Any product that has an EAS tag attached must be presented to the cashier to deactivate the code; if the EAS tag hasn't been deactivated, when passing through the doorway reader the alarm will sound, in order to notify staff members.

- 1.2m operational width
- Multiple units can be connected to cover wider entry/exit points
- High sensitivity, low false alarm rate
- Anti-disturbance from metal trolleys and touch
- Uses advanced DSP microchip data processing to speed up scanning of EAS tags.
- Two alarm tones: quick and slow
- Three alarm volumes: high, medium and low

Bandwidth	7.7-8.7MHz
Scan Frequency	162, 171, 180, 189Hz (also available in 8.2MHz, 10.5MHz)
Signal sampling rate	21.8us
Operating Range	Soft label 1.2m / Hard tag 1.5m
Alarm Volume	High, Medium, Low
Alarm tone	Quick, Slow
Dimensions	1650 x 340 x 85 mm

Part No.

RFTMAIN1R
RFTMAIN2R



8MHz RF Hard Tag

The RFT hard tag with chrome pin is commonly used in fashion retail shops. The pin is designed to allow the tag to be pinned onto the clothing without damage. To remove, simply place the tag on top of the magnetic detacher, and the pin will release.

- Frequency: 8.2MHz
- Detection range: 1.30m-1.40m

Part No.

RFTHARDTAG



Ink Tag

The ink tag provides double the security for your products. It contains a small amount of highly visible ink, if anyone tries to force the tag off, the ink will spill out. Best suited for use in the clothing industry.

Part No.

RFTINKTAG

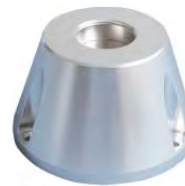


8MHz Adhesive RF Labels

These discrete disposable labels are designed to be placed directly on product packaging. Commonly used on books, electronics and cosmetic products.

Part No.

RFTLABEL



Magnetic Detacher

This magnetic detacher, simply mounts to the retail counter-top. The tags are placed on top of the detacher to safely release them.

Part No.

RFTDETACHER



ENERGY SAVING DEVICES (ENSA)



Energy Saving Master Slave 6 Way Powerboard

This Energy Saving Powerboard contains a special sensor that measures the electrical current running through the Master socket. It then automatically switches the 4 Slave sockets on or off based on the status of the Master. Eg: if your computer is plugged into the Master Socket and your printer, monitor, scanner, etc. are plugged into the Slave sockets, when your PC is turned off, the other equipment will also be switched off. This saves a significant amount of energy and also prolongs the life of your valuable equipment. Furthermore, it will minimise the risk of fire presented by appliances being always left on standby. Ideal for Computers, Audio/ Visual, Workstations, Offices, etc.

This powerboard also features a circuit breaker to protect your electrical wiring and connected devices from electrical overload. This feature cuts off power if more than 2400 watts is in use. To calculate total wattage of connected appliances simply add the wattage stated on each appliance and if the total is less than 2400 Watts, you should not experience an overload problem.

Note: If continual activation of the overload switch occurs, please turn off all devices and isolate the problem source. If the problem persists either replace powerboard or seek the assistance of a licensed electrician to find the fault.

Normal Operating Voltage : 240V A.C. 50Hz 10A 2400W Maximum
 Master Outlet operating range >30W, < 500W
 Combination of Appliances

Part No.
 WGESPB6

Makes your alarm sensors 'Dual Purpose' by turning on appliances & lights automatically as well as activating your alarm!



Home Automation / Remote Lighting

This unique product simply replaces the standard light switch in a room. The lights can then automatically be turned on when installed along with a compatible wireless detector, remote control or by an existing alarm sensor that is easily retrofitted with a miniature transmitter. When used in auto mode, if the wireless detector senses movement, a door opening, or perhaps even smoke, the ENSA can automatically turn the lights on for a pre-determined period. By not turning on a room light unless there is activity in the room, and there is insufficient natural lighting this product saves energy. There is also a manual mode of operation, where you can turn the lights permanently on or off as per a normal light switch.

- Low cost solution to the home automation & energy saving control of lighting and other devices (i.e. fans), without the need to install any cable or expensive control boxes.
- Can be used in virtually any home or business for convenience, added security, power bill reduction and of course environmental benefits
- Can be installed in minutes by a licensed electrician without requiring any electrical cabling
- Gives a unique opportunity for the security industry to enhance the function of their alarm systems by making their detectors dual purpose.

Part No.
 ENSA

Energy Saving Automated Wireless Power Point

This unique product simply plugs into your existing power point and allows you to control any mains powered device up to 10A (amps) via a wireless sensing device or remote control. Common applications include connecting a lamp, fan, or air-conditioner and using a radio remote control to be able to turn your appliance on/off from virtually anywhere in your home. Alternatively, you can use a wireless detector to save energy by not turning on connected devices unless there is actually human presence detected or insufficient natural lighting. You can also retro-fit our tiny transmitter to existing alarm detectors making them dual purpose.

- Connect any mains powered device up to 10amps.
- Compatible with all Watchguard wireless sensors
- Easy DIY Installation
- Inbuilt adjustable daylight sensor to allow setting of light level for activation.
- Adjustable timer to allow device to turn off automatically after a set period.
- Can be used with our radio remote controls for simple on/off operation.

Part No.
 ENSAPOWERPOINT

RhinoCo Technology's Terms & Conditions of Sale

1. DEFINITION

The expression "The Company", when referred to in these Terms and Conditions, refers to CORNICK PTY LTD ABN 74 001 621 610.

2. GENERAL

These Terms and Conditions of Sales apply to the sales of goods and services manufactured or supplied by The Company.

Any order received by The Company is deemed to be an order incorporating these Terms and Conditions and no variation or cancellation of any of these Terms and Conditions shall be binding on The Company unless assented to by The Company in writing.

Each order placed by the customer shall be & be deemed to be a representation by it, made at the time that it is solvent & able to pay all of its debts as & when they fall due. Failure to pay The Company in accordance with these terms shall be & be deemed to be conclusive evidence that the customer had no reasonable grounds for making the representation hereof & that the representations were unconscionable, misleading and deceptive.

3. ACCEPTANCE

Any quotation by The Company is not to be construed as an offer or obligation to sell and The Company reserves the right, at its option, to accept or reject any orders received.

4. PRICES

All prices charged/quoted shall be The Company's prices ruling at the date of despatch. Verbal quotations are subject to written confirmation which will be given when requested. All goods are sold and all prices are quoted FOB ex-works The Company unless otherwise specified. The Company reserves the right at any time to make reasonable adjustments of prices in relation to fluctuations in The Company's cost of labour, material, goods or transport and also in relation to any changes in currency exchange rates or duty which affect The Company's costs for imported goods.

Unless expressly noted all prices charged/quoted are exclusive of GST. All government imposts of GST or any equivalent as separately itemised on The Company's invoices are to the customer's account.

5. CANCELLATION OR VARIATION

A contract may, at The Company's option, be terminated in the event of insolvency of the purchaser or the purchaser being placed in liquidation, whether voluntarily or otherwise. A purchaser may only vary an order if such variation is accepted by The Company in writing and any variation or cancellation may only occur on terms which will provide for The Company to be indemnified by the purchaser against any loss or damages. Cancellations will attract a cancellation fee and must be at least 90 days prior to current due delivery date. No cancellation will be accepted on indented products. Re-schedules must be at least 45 days prior to the current due delivery date and any item may be deferred only once, up to a maximum of 90 days from the original requested date.

6. PACKING

Unless otherwise indicated prices include standard cases or packing.

7. DELIVERY

Unless otherwise stated in writing the price quoted is ex The Company's store where stocked. Where delivery is requested beyond this point The Company may, at its discretion, agree to act as agent for the purchaser in this matter and all costs for cartage and insurance will be for the purchaser's account.

8. TERMS OF PAYMENT

Cash on Delivery otherwise expressly agreed to in writing. The Company reserves the right to deliver and invoice any item or items comprising the whole or part of any order. Failure of The Company to deliver any part of an order shall not entitle the purchaser to repudiate the contract.

9. CLAIMS

The following conditions relating to the return of goods for credit apply to all goods returned for this purpose.

9.1 Goods returned must be accompanied by a Delivery Docket stating original invoice number, date of purchase and reason for return.

9.2 Non-standard equipment made to special order cannot be credited under any circumstances.

9.3 Inward freight packing and delivery charges are the responsibility of the purchaser.

9.4 Goods will only be accepted for credit to the extent of that wrongly or over-supplied.

9.5 All returns must be in good order and condition, unused and in original packaging. No claims by the purchaser need be recognised unless made in writing within fourteen days after delivery of the goods to the purchaser.

No claim for damage or resultant expense direct or indirect in respect of any goods shall in any case exceed the invoice price of the goods in respect of any damages or expense shall arise. All damage or expense over and above such invoice shall be the responsibility of the purchaser.

10. RISKS

Risk in the goods purchased shall, unless otherwise agreed in writing, pass to the purchaser upon delivery of the goods to the purchaser or his agent or to a carrier commissioned by the purchaser.

11. PATENTS

To the best of The Company's knowledge goods sold to the purchaser will not infringe any patent, trade mark, registered design or copyright of any third party but The Company shall in no circumstances be liable to the purchaser in respect of any such infringement constituted by the sale or use of the goods.

12. PERFORMANCE AND REPRESENTATION

Any figures or estimates given for performance of goods are based upon The Company's experience and are such as The Company would expect to obtain on test. But The Company will only accept liability for failure to obtain the figures or estimates given when such figures or estimates are guaranteed in writing within specified margins. The purchaser acknowledges that neither The Company nor any person purporting to act on its behalf has made any representation or given any promise or undertaking which is not expressly set out in the contract whether as to the fitness of the goods for any particular purpose or any other matter.

13. CONDITIONS AND WARRANTIES

All conditions and warranties expressed or implied by statute, the common law equity trade custom or usage or otherwise howsoever are hereby expressly excluded to the maximum extent permitted by law. Where so permitted the liability of The Company for a breach of a condition or warranty that cannot be excluded is limited (at The Company's option) to the replacement or repair of the goods or the supply of equivalent goods or the cost of replacing or repairing the goods or of acquiring equivalent goods. The Company shall not be liable in any way whatsoever for indirect or consequential loss or damage whatsoever (whether based on tort or contract or otherwise). It is a condition of this contract that the purchaser shall not use the goods for the installation in or in association with aircraft. Goods are not authorised for use in life support devices, systems intended for surgical implant into the body or for applications intended to support or sustain life or where the failure of the product would ordinarily create a situation where personal injury or death is likely to occur. In the event the goods are so incorrectly used, The Company shall be exempt from all liability whatsoever and the purchaser hereby indemnifies The Company in respect of any claims, demands, suits or proceedings whatsoever resulting from such misuse of the goods. The Company warrants its products to be in conformance with its own plans and specifications and to be free from defects in materials and workmanship under normal use and service for 12 months from the date stamp control on the product, or for products not having a date stamp, for twelve months from the date of original purchase unless the installation instructions or catalogue sets forth a shorter period, in which case the shorter period shall apply. The Company's obligation shall be limited to repairing or replacing, at its option, free of charge for materials or labor, any part which is proved not in compliance with The Company's specifications or proves defective in materials or workmanship under normal use and service. The Company shall have no obligation under this Limited Warranty or otherwise if the product is altered or improperly repaired or serviced by anyone other than The Company. For warranty service, return transportation prepaid, to 9 Hannabus Place McGraths Hill NSW 2756 Australia.

There are no warranties, expressed or implied, of merchant ability, or fitness for a particular purpose or otherwise, which extend beyond the description on the face hereof. In no case shall The Company be liable to anyone for any consequential or incidental damages for breach of this or any other warranty, express or implied, or upon any other basis of liability whatsoever, even the loss or damage is caused by its own negligence or fault. The Company does not represent that the products it sells may not be compromised or circumvented; that the products will prevent any personal injury or property loss by burglary, robbery, fire or otherwise; or that the products will in all cases provide adequate warning or protection. Customer understands that a properly installed and maintained alarm system may only reduce the risk of a burglary, robbery, or fire without warning, but it is not insurance or a guarantee that such will not occur or that there will be no personal injury or property loss as a result.

Consequently, The Company shall have no liability for any personal injury; property damage or other loss based on a claim the product failed to give any warning. However, if The Company is held liable, whether directly or indirectly, for any loss or damage arising under this limited warranty or otherwise, regardless of cause or origin, The Company's maximum liability shall not in any case exceed the purchase price of the product, which shall be the complete and exclusive remedy against The Company. This warranty replaces any previous warranties and is the only warranty made by The Company on this product. No increase or alteration, written or verbal, of the obligations of this Limited Warranty is authorised.

14. TITLE TO GOODS

14.1 Notwithstanding delivery of the goods to the purchaser, until the purchaser has effected full payment for the Goods and any other goods previously supplied by The Company:

- legal title to the Goods will remain with The Company;
- the risk in the Goods will pass to the purchaser on delivery to the purchaser or its agent;
- the relationship between The Company and the purchaser will be fiduciary;

11.2 The Purchaser will:

- hold the Goods as bailee for The Company;
- keep the goods separate from other goods; and
- label the goods so that they are identifiable as the goods of The Company;

14.3 With The Company's consent (which is given) the purchaser is at liberty to sell the Goods, in the ordinary course of the purchaser's business, provided that the money from the sale will:

- be held in a separate account in trust for the vendor;
- not be mingled with other money; and
- not be placed into an overdrawn account

14.4 The purchaser is not an agent of The Company in any sale of the Goods by the purchaser.

14.5 After the happening of an Event of Default, the vendor may without demand retake possession of the Goods and may without notice sell the Goods on such terms and in such a manner as it determines and will be entitled to deduct all expenses incurred. For the purposes of recovering possession and without limiting the generality of the foregoing, the purchaser irrevocably authorises and licenses The Company and its servants and agents to enter any premises where any Goods may be stored and to take possession of the Goods.

15. RECOVERY OF COSTS

The customer will pay to The Company any costs and expenses incurred by it or its solicitors, legal advisers, mercantile agents and other parties acting on The Company's behalf in respect of anything instituted or being considered against the customer whether for debt, possession of any goods or otherwise.

16. FORCE MAJEUR

The Company will not be in default or in breach of any contract with the customer by as a result of Force Majeur. Force Majeur means beyond the reasonable control of The Company and includes any strike or lockout either directly or indirectly by any supplier of goods or services.

17. LEGAL CONSTRUCTION

Except as may be otherwise agreed by The Company, the contract shall be governed by the laws of the State of NSW.

Fax Order Form

Fax your order to: 02 4577 4885



Customer Details:

Company: _____
 Contact: _____
 ABN No. _____
 Postal Address: _____

 State: _____ Post Code: _____
 Phone: _____ Fax: _____
 Mobile: _____
 Email: _____

Order No. _____

Payment Details:

- Account - A/C # _____
- Cheque / Money Order
- Direct Deposit
- Mastercard
- Visa
- Amex - (Surcharge Applies)

Delivery Details:

- Express Post (Up to 3kg only)
- Road Freight (Std Road Freight Charges Apply)
- Pick Up - Location:
 - McGraths Hill
 - Haberfield
 - Villawood
 - Wollongong
 - Your Nominated Freight Carrier

On all pick up items sales staff will call to confirm availability & pick up times

Company: _____
 Phone: _____
 Account Code: _____
 Delivery Address: _____

 State: _____ Post Code: _____

Card No. _____

Exp Date: __ / __

Card Holders Signature: _____

 (Please Note: Credit card charges may apply)

Special Instructions: _____

Part No.	Description	Qty	Unit Price	Total Price

**Please Fax to RhinoCo Technology on
02 4577 4885**

Total Order Value	\$
Delivery	\$
GST	\$
ORDER TOTAL	\$

Please photocopy and use this page as often as required to order your products



INTERNATIONAL HEADQUATERS AND BRANCHES



AUSTRALIA HEAD OFFICE

Address: 9 Hannabus Place McGraths Hill
NSW 2756, Australia
Phone: (+61) 2 4577 4708
Fax: (+61) 2 4577 4885
Email: sales@rhino.com.au

HABERFIELD BRANCH

Address: 223 Ramsay Street
Haberfield NSW 2045, Australia
Phone: (+61) 2 9716 0444
Fax: (+61) 2 9799 2024

VILLAWOOD BRANCH

Address: 71 Middleton Road
Villawood NSW 2163, Australia
Phone: (+61) 2 9743 8222
Fax: (+61) 2 9743 8590

WOLLONGONG BRANCH

Address: 85 Princes Highway,
Fairy Meadow NSW 2519, Australia
Phone: (+61) 2 4228 8737
Fax: (+61) 2 4228 8736

INTERNATIONAL SALES OFFICES & MANUFACTURING



UK SALES OFFICE

Address: 3B Vernon Drive, Shrewsbury,
SY1 3TF United Kingdom
Phone: (+44) 0845 644 5421
Fax: (+44) 0845 644 5431
Email: sales@rhinoco.co.uk



ITALY SALES OFFICE

Address: 24 Piazza Garibaldi,
98034 Francavilla Di Sicilia (ME) Italy
Phone: (+39) 0942 989241
Fax: (+39) 0942 989241
Email: sales@rhinoco.it



SOUTH AFRICA OFFICE

Address: Route 21 Corp/ Park, Unit c3
Prospect Close, 311 Regency Drive,
Irene Ext 30, South Africa
Phone: (+27) 12345 6626
Email: sales@rhinoco.co.za



NEW ZEALAND OFFICE

Address: 68d Paul Matthews Drive,
Albany, Auckland New Zealand 0751
Phone: (+64) 9 476 8052
Fax: (+64) 9 476 8059
Email: sales@rhinoco.co.nz



CHINA SALES OFFICE

Phone: (+86) 755 837 45889
Email: china@rhino.com.au



KOREA SALES OFFICE

Phone: (+82) 32 833300
Email: korea@rhino.com.au



TAIWAN SALES OFFICE

Phone: (+886) 6355188
Email: taiwan@rhino.com.au

Specifications may vary without notice. Products may vary from illustrations. Prices shown exclude GST and are available to qualified trade/wholesale customers only.

For full terms & conditions of sale please visit our website.

RhinoCo Technology Copyright © 2010 All Rights Reserved. Reproduction in whole or part is prohibited without the written consent of the company.

sales@rhino.com.au - www.rhino.com.au

Australian Inspired Electronic Security – Since 1978