

Since 1978



Run with Us!

# RhinoCo<sup>TM</sup> TECHNOLOGY

## Product Catalogue



Hardwired Alarm Systems with SMS Alert



Surveillance Cameras



Day / Night Infrared Surveillance Cameras



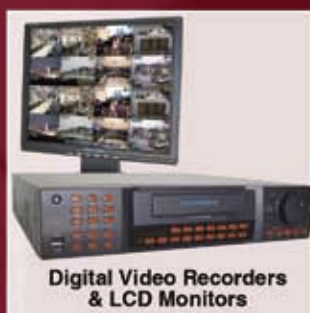
Reversing Cameras & Parking Sensors



Solar Powered Surveillance Systems



Alarm Accessories



Digital Video Recorders & LCD Monitors



Car Alarms & Engine Immobilisers with SMS Alert



Wireless GSM Alarm Systems with SMS Alert



Complete CCTV Packages



Wireless IP Based Surveillance



PTZ Speed Dome Cameras



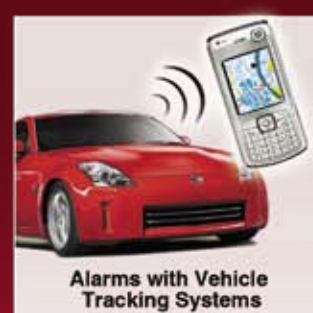
Linux Based Digital Video Recorder



Electronic Article Surveillance



PBX Phone Systems



Alarms with Vehicle Tracking Systems

## RHINOCO TECHNOLOGY COMPANY PROFILE

RhinoCo Technology (A Division of Cornick Pty Ltd ) has been part of the electronic security industry since 1978. Our company is proudly Australian-owned and still growing after almost 30 years in business. We have become best known over the years for our world renowned "Rhino" brand of vehicle security systems, our Watchguard™ brand of wireless security and surveillance systems, our Securview™ range of professional video surveillance equipment and most recently for our EasyPBX™ business phone systems.

Our current range of Securview™ surveillance cameras, digital video recorders and capture cards are proving to be the best value in the market with consistent levels of quality and innovation at a fair price. In particular, our Securview™ Linux MPEG4 DVR's (which are fully assembled, programmed and tested at our head office in McGraths Hill, NSW) have proven to be an extremely popular solution for many SME's with their advanced features, network scalability, low cost, and easy administration

The Watchguard™ brand has become a trusted and preferred name in the electronic security & safety industry. By constantly researching and developing our Watchguard™ branded products, we have been able to stay on top of our competition, supplying leading edge reliable and technically superior products. This catalogue highlights our latest Watchguard™ home and office security and safety range including wireless and hardwired alarm systems, packaged surveillance products and various other accessories. All products selected for our Watchguard™ range are both easy to install and operate, can be installed by any handy person and offer high performance yet low cost solutions for a majority of installation requirements.

Rhino Vehicle Security Systems have become the preferred choice of hundreds of thousands of vehicle owners around the world due to leading-edge Australian product design, superior reliability, along with unparalleled technical service and support. This catalogue highlights our latest vehicle security range including alarms and immobilisers, reversing cameras, tracking systems and various other accessories. Many features have been made user-programmable so they can be easily turned on or off to suit your needs. A number of models have also been independently tested and approved to meet the latest Australian Standards and are endorsed by numerous insurance companies.

Our range of EasyPBX™ phone systems have been specifically designed to provide a user friendly and cost effective solution for business communication. Each system is fully expandable and can be individually tailored to suit your business via the programmable function keys.

Over the years we have built strong, long-term relationships with a large number of leading equipment suppliers from around the world. We work closely with these manufacturers to ensure that their products are well suited, user friendly and reliable in operation for our target markets.

RhinoCo Technology's Headquarters / R & D Centre (located in Sydney) is involved in all aspects of product design, engineering, quality assurance, sales, technical service and administration.

Since the safety and security industry is an ever evolving one, even if we don't have the exact item you may be looking for within

Please feel free to visit our website where you will find our extensive range of alarms and security surveillance products plus many other associated accessories. - [www.rhino.com.au](http://www.rhino.com.au)

Here at RhinoCo Technology we will always endeavour to support YOU, our valued customer, with a wide range of leading-edge, value for money products and the best technical support in the industry. Let us prove it to you!



### Headquarters / R&D Centre

Address: 9 Hannabus Place, McGraths Hill  
NSW, 2756, Australia  
Telephone: +61 2 4577 4708  
Fax: +61 2 4577 4885  
Email: [sales@rhino.com.au](mailto:sales@rhino.com.au)  
Website: [www.rhino.com.au](http://www.rhino.com.au)  
Security Master Licence: 407530935

## **Professional Surveillance Products**

- >> Surveillance Cameras
- >> Digital Video Recorders
- >> Surveillance Accessories
- >> Wireless Networking Products



## **Alarms & Surveillance Products**

- >> Alarm Systems & Accessories
- >> Energy Saving Devices
- >> Packaged Surveillance Kits
- >> Electronic Article Surveillance



## **Vehicle Security Products**

- >> Vehicle Alarms & Accessories
- >> Vehicle Tracking Systems
- >> Mobile Digital Video Recorders
- >> Vehicle Reversing Kits, Sensors & Cameras



## **Business Phone Systems**

- >> Business Phone System Package
- >> Phone Systems Accessories



- >> Terms & Conditions
- >> Fax Order Form



**SOLAR POWERED**

**Totally Wireless Long Range Surveillance Cameras**

5.8m galvanized steel pole with in-built 120 watt solar panel & 150Ah deep cycle lead acid battery (charged by solar panel)

- Analogue System - For local Point to Point CCTV Surveillance
- IP Camera with Wireless Access Point (802.11G)
- IP Camera with Wireless Next G Modem

*For more information, see page 22*

## NUMBER PLATE CAMERA



Capture high quality number plate image while car is driving in high speed or at night with headlights on.

*For more information, see page 6*

**EVER NEED TO KNOW WHERE YOUR VEHICLE IS RIGHT NOW? OR WHERE IT HAS BEEN?**

**Locate & Track Online!**



*For more information, see page 43*

## MOBILE DIGITAL VIDEO RECORDERS



Ideal for monitoring driver behaviour, proving deliveries have been made or providing evidence in case of an accident. You can connect up to 4 cameras if required.

*For more information, see page 44*

## DIGITAL SURVEILLANCE PACKAGE



**Complete 4 Channel Digital Video Surveillance Kit with 4 x Colour Weatherproof Day/Night Cameras**

Ideal for a home or small business wanting to set up a digital surveillance system with network and remote access.

*For more information, see page 34*

## PBX BUSINESS PHONE SYSTEM



**Offers a complete phone solution for your business**

*For more information, see page 48*

# **SECURVIEW™ Professional Surveillance Products**



**SURVEILLANCE CAMERAS &  
ACCESSORIES**

**PAGE 6**

**DIGITAL VIDEO RECORDERS &  
ACCESSORIES**

**PAGE 14**

**MONITORS & POWER SUPPLIES**

**PAGE 17**

**CONNECTORS & CABLES**

**PAGE 19**

**WIRELESS TRANSMISSION PRODUCTS**

**PAGE 21**



**FULL BODY CAMERAS (COLOUR)**

**License Plate Capture Camera**



This high quality license plate capture camera features an intelligent "Traffic" mode that turns speeding vehicles, headlights, backlighting and weather conditions into non-issues. While standard CCTV cameras struggle to provide clear identifiable license plate images the VSNPRCAM utilises two separate traffic modes, DSP (Digital Signal Processing) and DNR (Digital Noise Reduction) technology to continuously provide high quality clear images. It also features true Day/Night functionality to provide 24hr operation.



<b>Image Sensor</b>	1/3" High Exview CCD
<b>Horizontal Resolution</b>	540 TV Lines(Day Mode) / 600TVL (Night Mode)
<b>Lens</b>	Not Included (See Under Camera Lenses)
<b>Minimum Illumination</b>	0.006 Lux
<b>Power</b>	12V DC
<b>Dimensions</b>	126(L) x 50(W) x 62(H) mm

Part No.  
VSNPRCAM



**High Resolution Camera with 220x Total Zoom & Auto Focus**

The unique feature of this camera is the 220X total zoom (22X Optical, 10X Digital) making it ideal for viewing enhanced images close up. The zoom feature is essential for monitoring large areas with few cameras. It allows the user to be able to focus on images at a distance and display the image with maximum focus and clarity. Can be controlled by DVR's via RS485

<b>Image Sensor</b>	1/4" High Quality Sony CCD
<b>Horizontal Resolution</b>	480 TV Lines
<b>Lens</b>	Cannon 22x Optical Zoom
<b>Minimum Illumination</b>	1.5 Lux (Typical)
<b>Power</b>	12V DC
<b>Dimensions</b>	120 (L) x 59 (W) x 80(H) mm

Part No.  
VSMTV-64G5DHPDN



**1/4" High Resolution Camera with 220x Remote Zoom & Auto Focus**

Utilises the VSMTV-64G5DHPDN as above with the added feature of being able to control the 220X total zoom (22X Optical, 10X Digital) via a Radio Remote Control from anywhere up to 100m away. As it uses Radio Remote Control, the signal can travel through walls and other obstacles, even across buildings making it ideal for monitoring large areas with few cameras. It allows the user to be able to remotely zoom in or out on images and display the image with maximum focus and clarity without leaving their screen.

Supplied with 2, dual button remote controls with long life lithium batteries. Up to 15 remotes per camera can be used.

<b>Image Sensor</b>	1/4" High Quality Sony CCD
<b>Horizontal Resolution</b>	480 TV Lines
<b>Lens</b>	Cannon 22x Optical Zoom
<b>Minimum Illumination</b>	1.5 Lux (Typical)
<b>Power</b>	12V DC
<b>Dimensions</b>	120 (L) x 59 (W) x 80(H) mm

Part No.  
SMARTZOOM220



**1/3" High Resolution Wide Dynamic Starlight Camera**

This special camera has a much wider dynamic range than regular CCTV cameras. It is designed mainly for installation in areas where you have very strong backlighting behind the object you wish to view. A regular CCTV camera will either adjust to see what is outside, making the subject dark & unidentifiable inside the room OR if the camera is adjusted to see the subject inside, you can no longer see what is outside – the background simply becomes too bright.

However, by using our Wide Dynamic Camera you will be able to see clearly both inside and outside.

<b>Image Sensor</b>	1/3" Double Speed CCD with 410K Pixels
<b>Horizontal Resolution</b>	520 TV Lines(Colour) / 570 TV Lines(B&W)
<b>Lens</b>	Not Included (See Under Camera Lenses)
<b>Minimum Illumination</b>	0.05 Lux @ F1.2(AGC ON) / 0.001 Lux @ F1.2 when in Starlight Mode
<b>Power</b>	(Dual Voltage) - 12V DC or 24V AC 6W
<b>Dimensions</b>	110(L) x 50(W) x 55(H)mm

Part No.  
VSMTV-63W3P



**High Resolution DSP Camera**

This high resolution colour camera utilises a 1/3" Panasonic CCD image sensor, which can capture images at 550TVL. It has an electronic iris, with automatic shutter speed control, AGC(Automatic Gain Control) and backlight compensation.

<b>Image Sensor</b>	1/3" Interline Transfer Panasonic CCD
<b>Horizontal Resolution</b>	550 TV Lines
<b>Lens</b>	Auto Iris: Accepts Video or DC Drive Lenses
<b>Minimum Illumination</b>	0.5 Lux @ F1.4
<b>Power</b>	12V DC
<b>Dimensions</b>	117(L) x 57 (W) x 57(H) mm

Part No.  
VSCC8772S

## BULLET CAMERAS (COLOUR)

### High Resolution Vari-Focal Day/Night Bullet Camera



The compact size of this High Resolution Colour Bullet Camera makes it an ideal choice for home and business security installations. It has a High Quality 1/3" Sony Super HAD CCD with 560 TVL(Colour) / 600 TVL(B&W) resolution, providing a crisp clear picture quality both Day and Night. The camera's field of view can be easily adjusted utilising the 4.0mm – 9.0mm Vari-Focal Lens. The durable Aluminium / Weatherproof housing allows it to be used both indoor and out.

**Manual Vari-Focal**

\* Also available in 9-22mm Vari-Focal Lens

<b>Image Sensor</b>	1/3 Sony Super HAD CCD
<b>Horizontal Resolution</b>	560 TV Lines (Colour) / 600 TV Lines (B&W)
<b>Lens</b>	4.0 ~ 9.0mm Vari-Focal
<b>Minimum Illumination</b>	0.2 Lux(Day) / 0.03 Lux(Night) @ F1.2
<b>Power</b>	12V DC
<b>Dimensions</b>	105(L) x 26(Ø) mm

Part No.  
VSSB-HDBCAM  
VSSB-HDBCAM9-22



### Bullet Camera with Weatherproof Housing and Bracket

Ideal for mounting in small confined spaces (either inside or outside), this entry-level bullet camera is recommended for those on a budget but who also require good quality video recording.

<b>Image Sensor</b>	1/3" Sony CCD
<b>Horizontal Resolution</b>	420 TV Lines
<b>Lens</b>	3.6mm
<b>Minimum Illumination</b>	0.1 Lux @ F1.2
<b>Power</b>	12V DC
<b>Dimensions</b>	100(L) x 31(Ø) mm

Part No.  
VSTP6360WBC

## DOME CAMERAS (COLOUR)



### Entry Level Dome Camera

This entry level camera is ideal for those who want a ceiling mounted dome camera for general scene surveillance. It provides good picture quality and has a stylish low profile design.

<b>Image Sensor</b>	1/4" CCD
<b>Horizontal Resolution</b>	350 TV Lines
<b>Lens</b>	3.6mm Board
<b>Minimum Illumination</b>	0.6 Lux @ F2.0
<b>Power</b>	12V DC
<b>Dimensions</b>	60(H) x 100(Ø) mm

Part No.  
VSTP101AV



### 1/3" Tiny Dome Camera

This tiny dome camera is ideal for use in discrete applications and delivers good quality images.

<b>Image Sensor</b>	1/3" Sharp CCD
<b>Horizontal Resolution</b>	420 TVL
<b>Lens</b>	4.3mm Board Lens
<b>Minimum Illumination</b>	0.2 Lux @ F2.0
<b>Power</b>	12V DC
<b>Dimensions</b>	73Ø X 55(H) mm

Part No.  
VSTINYDOME



### Vari-Focal Armoured Dome Camera

This vari-focal armoured dome camera provides a vandal resistant solution for both indoor or outdoor security applications. It has a rugged corrosion resistant die cast aluminium base and an impact resistant polycarbonate dome cover. It is equipped with a vari-focal 3.5 ~ 8.0mm lens and has swivel and tilt adjustment for maximum versatility.

<b>Image Sensor</b>	1/3" CCD
<b>Horizontal Resolution</b>	420 TV Lines
<b>Lens</b>	3.5 ~ 8.0mm Vari-Focal
<b>Minimum Illumination</b>	0.2 Lux @ F2.0
<b>Power</b>	12V DC
<b>Dimensions</b>	85(H) x 145(Ø) mm

Part No.  
VSTPADOME



### High Resolution Vari-Focal Dome Camera

This high-resolution vari-focal dome camera is the ideal choice if you require a camera that allows you to adjust the focus to produce the best picture quality available. Ideal for retail shops.

<b>Image Sensor</b>	1/3 Panasonic CCD
<b>Horizontal Resolution</b>	550 TV Lines
<b>Lens</b>	4.0 ~ 8.0mm Manual Iris
<b>Minimum Illumination</b>	0.5 Lux @ F1.2
<b>Power</b>	12V DC
<b>Dimensions</b>	74(H) x 117(Ø) mm

Part No.  
VSCC8710BVF



### Vari-Focal Dome Camera

This vari-focal dome camera is the ideal choice if you require a camera that allows you to adjust the focus to produce the best picture quality available. Ideal for retail shops.

<b>Image Sensor</b>	1/4" Panasonic CCD
<b>Horizontal Resolution</b>	420 TV Lines
<b>Lens</b>	4.0 ~ 8.0mm Manual Iris
<b>Minimum Illumination</b>	0.92 Lux @ F1.2
<b>Power</b>	12V DC
<b>Dimensions</b>	74(H) x 117(Ø) mm

Part No.  
VSCC9612BVF



**Day/Night High Resolution Infrared Armoured Dome Camera**

This camera has a High Quality 1/3" Sony Super HAD CCD with 560 TVL resolution providing outstanding picture quality. It also has Infrared LED's providing a crisp clear picture quality both Day and Night. The camera's field of view can be easily adjusted utilising the 4.0mm – 9.0mm Vari-Focal Lens. The Vandal Resistant / Weatherproof housing allows it to be used both indoor and out. Ideal for all installations where picture quality counts!

<b>Image Sensor</b>	1/3" Sony Super HAD CCD
<b>Horizontal Resolution</b>	560 TV Lines
<b>Lens</b>	4 -9 mm Vari-Focal
<b>Minimum Illumination</b>	0.2 Lux at F1.2 (IR LED On)
<b>Power</b>	12VDC
<b>Dimensions</b>	120(Ø)mm x 100(H)mm

Part No.  
VSSB-DOMEIR



**Day/Night High Resolution Infrared Dome Camera**

This IR dome camera utilises a 1/3" high resolution CCD image sensor with 550 TV lines of horizontal resolution. It is equipped with a 6.0mm board lens and has 18 individual Infrared LED's allowing B&W operation at night. The camera can be rotated 0-90° on its swivel base and tilted 0-180°.

<b>Image Sensor</b>	1/3" High Resolution CCD
<b>Horizontal Resolution</b>	550 TV Lines
<b>Lens</b>	6.0mm
<b>Minimum Illumination</b>	0.5 Lux @ F1.4 (0 Lux with IR on)
<b>Power</b>	12V DC
<b>Dimensions</b>	74(H) x 117(Ø) mm

Part No.  
VSCC8712BIR



**Day/Night High Resolution Vari-Focal Infrared Dome Camera**

The VSDDN45MIR is a high resolution IR dome camera designed for both indoor and outdoor applications. It utilises 40 individual IR LED's and an auto IR cut filter to provide true 24hr day/night vision up to 45m (indoor) and 25m (outdoor). The robust metal casing is rated at IP65 and is suitable for use in all weather conditions. It also features a 4~9mm vari focal lens which can be easily adjusted via external control screws.

<b>Image Sensor</b>	1/3" Sony Super HAD CCD
<b>Horizontal Resolution</b>	540 TV Lines
<b>Lens</b>	4.0 ~ 9.0mm Auto Iris IR
<b>Minimum Illumination</b>	0.1 Lux @ F2.0 (0 Lux with IR on)
<b>Power</b>	12V DC
<b>Dimensions</b>	130(H) x 160(Ø) mm

Part No.  
VSDDN45MIR



**Day/Night High Resolution Infrared Dome Camera**

The VSDDN50MIR is a high resolution IR dome camera designed for both indoor and outdoor applications. It utilises 40 individual IR LED's and an auto IR cut filter to provide true 24hr day/night vision up to 50m (indoor) and 30m (outdoor). The robust metal casing is rated at IP65 and is suitable for use in all weather conditions. Fixed wide angle lens.

<b>Image Sensor</b>	1/3" Sony Super HAD CCD
<b>Horizontal Resolution</b>	540 TV Lines
<b>Lens</b>	4.0mm IR
<b>Minimum Illumination</b>	0.1 Lux @ F2.0 (0 Lux with IR on)
<b>Power</b>	12V DC
<b>Dimensions</b>	130(H) x 160(Ø) mm

Part No.  
VSDDN50MIR



**High Resolution Vari-Focal Pendant Dome Camera**

This colour vari-focal dome camera is ideal for mounting on ceilings or external walls.



<b>Image Sensor</b>	1/3" Sony Super HAD CCD
<b>Horizontal Resolution</b>	580 TV Lines
<b>Lens</b>	4 -9 mm Vari-Focal
<b>Minimum Illumination</b>	of 0.5 Lux at F1.4
<b>Power</b>	12VDC / 24VAC
<b>Dimensions</b>	131(Ø) x 224(L) x 238(H) mm - Wall Mount 131(Ø) x 302(L) mm - Ceiling Mount

Part No.  
VSDHVPM  
VSDHVCM



**Day/Night 'Dual Lens' Infrared Dome Camera**

This camera features Dual Lenses eliminating the need for an IR cut filter. By incorporating a dedicated image sensor for both daytime (colour 540TVL) and night time (B&W 600TVL), this camera is able to provide extremely high quality images in all lighting conditions. It is also weatherproof and has an IR range of up to 30m, making it ideal for outdoor applications.

<b>Dual Image Sensor</b>	1/3"Sony CCD(Color) 1/3"Sony EX-View CCD(B/W)
<b>Horizontal Resolution</b>	540 TVL (Colour), 600TVL (B/W)
<b>Lens</b>	MTV 3.6mm IR
<b>Minimum Illumination</b>	(0 Lux with IR on)
<b>Power</b>	12VDC
<b>Dimensions</b>	120Ø X 55(H)

Part No.  
VSDDN30MIRDL

## INFRARED EXTERNAL CAMERAS (COLOUR)

**40M**  
IR Range



### Day/Night 'Dual Lens' Infrared Outdoor Camera

This camera features Dual Lenses eliminating the need for an IR cut filter. By incorporating a dedicated image sensor for both daytime (colour 540TVL) and night time (B&W 600TVL), this camera is able to provide extremely high quality images in all lighting conditions. It is also weatherproof and has an IR range of up to 40m, making it ideal for outdoor applications.

<b>Dual Image Sensor</b>	1/3" SONY CCD(Colour) 1/3" SONY CCD(B/W)
<b>Horizontal Resolution</b>	540 TVL (Colour), 600TVL (B/W)
<b>Lens</b>	MTV 4.0mm IR
<b>Minimum Illumination</b>	(0 Lux with IR ON)
<b>Power</b>	12V DC
<b>Dimensions</b>	80(W) X 160(L)

Part No.  
VSWDN40MIRDL

**50M**  
IR Range



### Day/Night High Resolution Vari-Focal Infrared Camera

This high resolution IR camera is designed for both indoor and outdoor applications. It utilises 66 individual IR LED's and an auto IR cut filter to provide true 24hr day/night vision up to 50m (indoor) and 30m (outdoor). The robust metal casing is rated at IP55 and is suitable for use in all weather conditions. It also features a 4 ~ 9mm vari focal lens which can be easily adjusted via external control screws.

<b>Image Sensor</b>	1/3" Sony Super HAD CCD
<b>Horizontal Resolution</b>	540 TV Lines
<b>Lens</b>	4.0mm
<b>Minimum Illumination</b>	0.1 Lux @ F2.0 (0 Lux with IR on)
<b>Power</b>	12V DC
<b>Dimensions</b>	174(L) x 94(Ø) mm

Part No.  
VSWDN50MIR

### Day/Night Infrared Cameras

These cameras are ideal for both indoor and outdoor applications and have an IR range of 15m.



**Compact Size**

**15M**  
IR Range

**15M**  
IR Range

	VSTP936IRAV	VSWDN15MIR
<b>Image Sensor</b>	1/4" Colour CCD	1/4" High Quality CCD
<b>Horizontal Resolution</b>	420 TV Lines	420 TV Lines
<b>Lens</b>	3.6mm	4.0mm
<b>Minimum Illumination</b>	0.6 Lux @ F2 (0 Lux with IR on)	Lux @ F1.2 (0 with IR on)
<b>Power</b>	12V DC	12V DC
<b>Dimensions</b>	100(L) x 65(W) 63.8(H) mm	56(H) x 44(Ø) mm

Part No.  
VSTP936IRAV  
VSWDN15MIR



### Day/Night High Resolution Vari-Focal Infrared Camera

This high resolution IR camera is designed for both indoor and outdoor applications. It utilises 52 individual IR LED's and an auto IR cut filter to provide true 24hr day/night vision up to 60m (indoor) and 40m (outdoor). The robust metal casing is rated at IP55 and is suitable for use in all weather conditions. It also features an outstanding 5 ~ 50mm vari focal lens which can be easily adjusted via external control rings.

**60M**  
IR Range

<b>Image Sensor</b>	1/3" Sony Super HAD CCD
<b>Horizontal Resolution</b>	540 TV Lines(Colour) / 600 TV Lines(B&W)
<b>Lens</b>	5.0 ~ 50mm DC Auto Iris
<b>Minimum Illumination</b>	0.1 Lux @ F2.0 (0 Lux with IR on)
<b>Power</b>	12V DC
<b>Dimensions</b>	174(L) x 94(Ø) mm

Part No.  
VSWDN60MIR

**30M**  
IR Range



### Day/Night Infrared Camera

This camera utilises a high quality 1/4" Sharp CCD image sensor with 420 TV lines of horizontal resolution. It has 24 individual IR LED's to enable up to 30m infrared illumination range, a weatherproof housing with a protective sunshield and mounting bracket for tilt and swivel adjustment.

<b>Image Sensor</b>	1/4" High Quality CCD
<b>Horizontal Resolution</b>	420 TV Lines
<b>Lens</b>	4.0mm
<b>Minimum Illumination</b>	0 Lux @ F1.2 (0 with IR on)
<b>Power</b>	12V DC
<b>Dimensions</b>	125(L) x 69(Ø) mm

Part No.  
VSWDN30MIR

**90M**  
IR Range



### Day/Night High Resolution Vari-Focal Infrared Camera

This high resolution IR camera is designed for both indoor and outdoor applications. It utilises 90 individual IR LED's and an auto IR cut filter to provide true 24hr day/night vision up to 90m (indoor) and 70m (outdoor). The robust metal casing is rated at IP55 and is suitable for use in all weather conditions. It also features an outstanding 5 ~ 50mm vari-focal lens which can be easily adjusted via external control rings.

<b>Image Sensor</b>	1/3" Sony Super HAD CCD
<b>Horizontal Resolution</b>	540 TV Lines
<b>Lens</b>	5.0 ~ 50mm DC Auto Iris
<b>Minimum Illumination</b>	0.1 Lux @ F2.0 (0 Lux with IR on)
<b>Power</b>	12V DC
<b>Dimensions</b>	185(L) x 124(Ø) mm

Part No.  
VSWDN90MIR

**PTZ SPEED DOME CAMERAS (COLOUR)**



**Internal Day/Night High-Speed Dome 18 x Optical Zoom**

High resolution day night switching internal high speed dome camera with a built in 216 x zoom lens, using an moving IR cut filter to switch between monochrome and colour. The Pan tilt and zoom functions can be controlled either remotely using a joystick controller or via a suitable DVR. The camera uses RS485 PELCO-D / P to communicate. There are four alarm inputs that can be linked to preset camera positions. The camera has many advanced features including extremely low lux operation and a fully adjustable white balance function, these and other options are set-up in the on screen display

<b>Image Sensor</b>	1/4" CCD with Sony Original Module
<b>Horizontal Resolution</b>	470 TV Lines
<b>Lens</b>	216 x Zoom Ratio - 18 x Optical / 12 x Digital
<b>Minimum Illumination</b>	Low sensitivity of 0.01 lux (F1.4, ICR on)
<b>Power</b>	24VAC
<b>Dimensions</b>	216.5(L) x 133(Ø) mm

Part No.  
VSPTZ55



**External Day/Night High-Speed Dome 18 x Optical Zoom**

High resolution day night switching external high speed dome camera with a built in 216 x zoom lens, using an moving IR cut filter to switch between monochrome and colour. The Pan tilt and zoom functions can be controlled either remotely using a joystick controller or via a suitable DVR. The camera uses RS485 PELCO-D / P to communicate. There are four alarm inputs that can be linked to preset camera positions. The camera has many advanced features including extremely low lux operation and a fully adjustable white balance function, these and other options are set-up in the on screen display

\* Includes outdoor housing & bracket

<b>Image Sensor</b>	1/4" CCD with Sony Original Module
<b>Horizontal Resolution</b>	470 TV Lines
<b>Lens</b>	216 x Zoom Ratio - 18 x Optical / 12 x Digital
<b>Minimum Illumination</b>	Low sensitivity of 0.01 lux (F1.4, ICR on)
<b>Power</b>	24VAC
<b>Dimensions</b>	200(Ø) x 280(L) mm

Part No.  
VSPTZ55W

**PTZ CAMERA ACCESSORIES**



**Full Featured Speed Dome Controller**

Speed Dome Controller with Keyboard and Joystick, Controls up to 32 Speed Dome Cameras, RS485 Multi Protocol, with LCD Display.

- 0~255 address range for camera & decoder
- Manual or automatic camera controller
- Up to 128 preset positions and 6 cruising tracks
- Manual control of focus, zoom & lens iris

Part No.  
VSPTZKB

**RS-232 to RS-422/485 Converter**



RS-232 to RS-422/485 bi-directional converter. It allows one RS-232 port to be converted to and from RS-422 or RS-485 port, which can thus control up to 32 devices within 1.2km in a multidrop environment.

Part No.  
RS232TORS485



**RS-422/485 Repeater**

Boost RS-422 and RS-485 signals up to 4000 ft (1200m). Increase the maximum number of connected nodes to 128. Automatically detects data flow direction and switches data lines accordingly.

Part No.  
RS232TORS485REP

**IP BASED CAMERAS**



**Wireless Colour IP Camera with Motorised Pan/Tilt/Zoom**

Wireless Dual-Codec Network Camera with Pan/Tilt/Zoom. A powerful surveillance system connecting to a wired/wireless Ethernet connection to provide remote high-quality video and audio. The pan/tilt/zoom function can be controlled through the Internet or the included IR remote. Can be easily accessed via an Internet browser, receiving synchronized video & audio from anywhere anytime.

- MJPEG / MPEG4 compression selectable
- Motorised Pan/ Tilt / Zoom (10x optical zoom, plus 10x digital zoom)
- 802.11g wireless LAN with WEP, WPA & hardwired support
- Optimal synchronization of audio & video
- UPNP & DDNS support
- Intelligent motion detection
- Pre / Post alarm snapshots
- Extended I/O for sensor & alarm
- Free bundled 16-channels recording software
- Two-way audio

Part No.  
VSPZ6124



**Wireless Colour IP Camera with Motorised Pan/Tilt/Zoom and Outdoor Housing**

Specification as above

Part No.  
VSPZ6124D



## Wireless Pan/Tilt IP Camera with 3G & Next G™ Support

This IP camera supports wireless and hardwired networks as well as 3G and Next G™ technologies allowing remote viewing & control via devices such as mobile phones, PDA's and PC's. It utilises MPEG4 technology to maximise image quality for the bandwidth available and transmits using the open source RTSP standard, allowing use of the video stream in virtually any application.

- Live video and audio monitoring via 2.5G/3G mobile phone or media adaptor
- MPEG4 video compression (simple profile)
- Easy to install and configure
- Supports 3G & NEXT G RTSP (Real Time Streaming Protocol)
- Superior low light performance
- Record up to 25 frames per second in full VGA resolution
- Motorised Pan / Tilt
- 802.11g wireless LAN
- Optimal synchronization of audio & video
- UPNP & DDNS support
- Intelligent motion detection
- Free bundled 16-channel recording software
- Two-way audio
- Power: 12VDC

Part No.  
VSPZ7137

## CAMERA LENSES



### 2.8mm - 12mm DC Vari - Focal Auto - Iris Lenses

For indoor or outdoor use where light levels vary constantly and optimum performance is required under all light conditions. Includes the ability to adjust the field of view (i.e. wide telephoto adjustments).

Part No.  
VSLA2.8-12DC



### 6mm - 60mm DC Vari - Focal Auto - Iris Lenses

For indoor or outdoor use where light levels vary constantly and optimum performance is required under all light conditions. Includes the ability to adjust the field of view (i.e. wide telephoto adjustments).

Part No.  
VSLA6-60DC



### 2.8mm - 12mm Vari - Focal Manual - Iris Lenses

For indoor use. Ability to finely adjust lens aperture and focus for superior picture quality. Includes the ability to adjust the field of view (i.e. wide telephoto adjustments).

Part No.  
VSLM2.8-12

## CAMERA HOUSINGS & BRACKETS



### Armoured Dome Housing without Camera

This high quality armoured dome camera housing provides a weatherproof, tamper-resistant solution for both indoor and outdoor security applications.

- Corrosion resistant aluminium base
- Impact resistant polycarbonate cover
- Tamper-resistant screws
- Dimensions: 85(H) X 145(Ø)mm

Part No.  
VSARMOURDOME



### Weatherproof Camera Housing with Bracket

Constructed from light weight solid weatherproof aluminium, this housing is ideal for outdoor use.

- Suitable for cameras no larger than: 76(W) x 62(H) x 220(L) mm
- Dimensions of housing: 110(W) x 100 (H) x 340 (L) mm

Part No.  
VSCA13



### Weatherproof Camera Housing with Bracket

This housing has been IP66 certified and is constructed from light weight solid weatherproof aluminum making this housing ideal for outdoor use.

- Suitable for cameras no larger than: 76(W) x 72(H) x 260(L) mm
- Dimensions of housing: 113(W) x 106(H) x 410(L) mm

Part No.  
VSGL606



### Classical Camera Housing

This housing is constructed from extruded aluminum and is powder coated and stove finished. The design and manufacture is to the highest technical standard with environmental protection to level IP 66. The housing is supplied with an adjustable cable managed mounting bracket.

- Suitable for cameras no larger than: 90 (W) x 70 (H) x 230 (L) mm
- Dimensions of housing: 110(W) x 100 (H) x 340 (L) mm

Part No.  
VSTPH-1000



### Tinted Dome Covers

- Available in 8"(Ø) / 12"(Ø) / 14"(Ø)

Part No.	
VSTD8	8"(Ø)
VSTD12	12"(Ø)
VSTD14	14"(Ø)



### Short Metal Camera Bracket

- Swivel & tilt metal camera bracket
- Dimensions of bracket: 100(L)mm

Part No.  
VSCA11



### 10cm Straight Bracket

- 100mm straight bracket with mounting flanges
- For use with VSPTZHOUSINGEX only

Part No.  
VS15-CD03BM



### Plastic Camera Bracket

- Swivel & tilt plastic camera bracket, off-white colour
- Dimensions of bracket: 150(L) mm

Part No.  
VSCA9



### Pole Bracket

- Allows camera mounting on poles with adjustable fixing bands
- For use with VSPTZHOUSINGEX only

Part No.  
VS15-CD04BM



### Outdoor Housing & Pendant Set

This heavy duty dome housing is constructed from 1.6mm powder coated aluminum. A versatile camera mounting bracket allows the correct positioning of the camera lens. 180mm is the recommended maximum length of the camera and lens combination.

- Dimensions of housing: 275(W) x 330(H) mm (including wall bracket)

Part No.  
VSPTZHOUSINGEX



### Right Angle Bracket

- For use with VSPTZHOUSINGEX only

Part No.  
VS15-CD06BM



### Inside Corner Bracket (Right Angle)

- Ideal for mounting cameras in 90° corners
- For use with VSPTZHOUSINGEX only

Part No.  
VS15-CD03BMR



### 3 Feet Straight Bracket

- Supplied in three screw together sections with top and bottom mounting flanges
- For use with VSPTZHOUSINGEX only

Part No.  
VS15-CD03BM3



### Outside Corner Bracket

- Waterproof bracket suitable for mounting your camera externally in corners.
- For use with VSPTZHOUSINGEX only

Part No.  
VS15-05BM



### 6 Feet Straight Bracket

- Suitable for mounting cameras in high locations where maximum field of view is essential
- For use with VSPTZHOUSINGEX only

Part No.  
VS15-CD03BM6

## CAMERA TEST EQUIP

### 3.5" Wearable TFT LCD Monitor For Camera Installation



Wear On Arm

- Hi-resolution digital TFT-LCD module
- Wearable pouch for hands-free operation
- Dual power sources – battery or DC input
- CE / FCC approved. ROHS followed
- No more hand phone call charges, weak walkie-talkie signal or need second person to assist positioning and trouble shooting camera.

The VSCAMTESTER is a Portable 3.5" LCD Test Monitor used to test, adjust and focus surveillance cameras whilst mounted in position. It comes with a handy lightweight carrying case that can be worn around your arm to provide total hands free manoeuvrability. It can be powered by either battery or 12VDC.

Part No.  
VSCAMTESTER

## CAMERA ACCESSORIES



### Composite (BNC / RCA) to VGA Converter

- Converts Composite to VGA
- Output Resolution up to 1024 x 768 @ 60Hz
- Allows Use of Cost Effective PC / VGA Monitors with DVRs
- Includes 5VDC Power Supply

Part No.  
VID2VGA



### RF Modulator for Surveillance Cameras

This unit allows the connection of a CCTV camera with or without sound to a TV that has a TV aerial socket / RF socket. It has 2 RCA plugs. 1 x video, 1 x audio and a DC socket for a 12VDC power supply (100mA).

Part No.  
VSARFMOD



### Video Distribution Amplifier

- For Splitting 1 Video Signal Into 4, Without Signal Loss
- 1 x Composite Video Input
- 4 x Composite Video Outputs
- Power: 240 VAC

Part No.  
VSCA17

**WARNING!**  
THESE PREMISES ARE  
UNDER CONSTANT  
VIDEO SURVEILLANCE



### Warning Sign - A4 Size Blue Print on Corflute

These weatherproof / UV resistant warning signs help to increase the overall effectiveness of surveillance systems acting as a deterrent to would be criminals.

- Dimensions: 212(W) x 299(H) x 4(D)mm

Part No.  
VSA24



### Remote Microphone with PreAmp

High sensitivity microphone. Can be connected directly to audio input or TV/VCR/DVR.

- 12VDC

Part No.  
VSAMIC

## NETWORK & VIDEO WEB SERVERS

### Video Server



- Converts CCTV analog data into digital MPEG4 data
- Designed to be attachable to walls with aluminum case to prevent overheating
- Transmission of 25fps high resolution video images
- Bi-directional audio support for voice communication
- Application for mass scale monitoring terminal through SNMP V2 support
- Designed for use with our Platinum Series DVR's
- Utilises Platinum DVR as the video storage/distribution device
- Ability to modify transmission volume through motion detection/sensor input

Part No.  
VSNTSERVER

### 2 Channel Video Web Server



Allows you to upgrade your existing site based video monitoring system to allow remote viewing across the Internet. Each server allows for 2 analogue camera inputs and connects to the network via Ethernet.

Once the unit has been correctly configured it can be viewed and controlled around the world providing an extremely cost effective IP based surveillance system.

It is compatible with most CCTV cameras with an analogue output and has an auto e-mail warning system, which uploads images (to FTP site) and can advise you if an external alarm is triggered.

- Allows for watching and controlling on the Internet or LAN
- Watch dog function supported
- Supports Dynamic IP address via a Router
- 4 alarm inputs supported
- Duplex function, record & playback simultaneously at client site
- Intelligent recording function on Network Loss
- Multi AP screens & HTTP display (IE browser) supported

Part No.  
VSWEBSERVER

**STAND ALONE DIGITAL VIDEO RECORDER SYSTEMS**

**DVR DIAMOND SERIES**



The Securview Diamond series of High Resolution Stand Alone DVR machines offer exceptional performance and reliability. By combining the best of tried and trusted reliable components with new age technology Securview are able to bring you a highly efficient and extremely reliable cost effective Digital Video Recorder.

Featuring Real Time Display, MPEG4 Video Compression Technology, High Resolution recording, CDRW / USB Backup and Network functionality, these next generation machines are available in 4 / 8 / 16 Channels. The new look sleek design and detailed on screen display menus with almost unlimited system customisation, make them ideal for most small to medium business installations.

**4 Channel - High Resolution - MPEG4 Stand Alone Digital Video Recorders with Network Functionality, Remote Access & CD / DVD / USB Backup**

<b>Video Compression Format</b>	MPEG4
<b>Recording Resolutions</b>	352 x 288 / 704x 288 / 704 x 576
<b>Max. Recording Frame Rate</b>	100FPS Global
<b>Max. Display Frame Rate</b>	100FPS Global
<b>Backup Methods</b>	CD / DVD / USB
<b>Hard Drive Bays</b>	1
<b>Network Functionality</b>	Live View / Live Recording / Search / Setup / Backup

Part No.  
DVRDIAMOND4



**4**  
CHANNEL

\* Hard drive not included

**8 Channel - High Resolution - MPEG4 Stand Alone Digital Video Recorders with Network Functionality, Remote Access & CD / DVD / USB Backup**

<b>Video Compression Format</b>	MPEG4
<b>Recording Resolutions</b>	352 x 288 / 704x 288 / 704 x 576
<b>Max. Recording Frame Rate</b>	100FPS Global
<b>Max. Display Frame Rate</b>	200FPS Global
<b>Backup Methods</b>	CD / DVD / USB
<b>Hard Drive Bays</b>	2
<b>Network Functionality</b>	Live View / Live Recording / Search / Setup / Backup

Part No.  
DVRDIAMOND8



**8**  
CHANNEL

\* Hard drive not included

**16 Channel - High Resolution - MPEG4 Stand Alone Digital Video Recorders with Network Functionality, Remote Access & CD / DVD / USB Backup**

<b>Video Compression Format</b>	MPEG4
<b>Recording Resolutions</b>	352 x 288 / 704x 288 / 704 x 576
<b>Max. Recording Frame Rate</b>	100FPS Global
<b>Max. Display Frame Rate</b>	400FPS Global
<b>Backup Methods</b>	CD / DVD / USB
<b>Hard Drive Bays</b>	2
<b>Network Functionality</b>	Live View / Live Recording / Search / Setup / Backup

Part No.  
DVRDIAMOND16



**16**  
CHANNEL

\* Hard drive not included

## LINUX BASED DIGITAL VIDEO RECORDER SYSTEMS

All of our PC based Linux DVR systems are suitable for commercial, industrial or residential use and come with the latest version of MPEG4 Multihost software, which enables you to be able to view up to 256 sites simultaneously.

### Some of the software features include:

- Web Interface / Web Server & Inbuilt support for remote viewing
- MPEG4 Recording (high quality video compression)
- Simple network configuration
- View via the internet / LAN / WAN using your ethernet, broadband or cable connection (just enter in your DVR's IP address along with your username and password to view all of your cameras!)
- Remotely administer your Digital Video Surveillance system without having to be in front of it! Control it from anywhere around the world
- Pan / Tilt/ Zoom control
- Search for saved images
- Secure username & password login (Multi-Level)
- Multi-Host software - View multiple sites simultaneously
- Selectable display modes (eg. view cameras as: 2 x 2, 4 x 4 etc)
- Can be used with VSNTSERVER
- Remotely backup recorded video footage

## DVR GOLD SERIES

The Securview GOLD range offers a global recording rate of up to 50 Frames Per Second and allows for 16 video channel inputs. They are supplied in a professional 19" rackmount case which makes it ideal for commercial applications especially where multiple DVR systems need to be implemented, or installed alongside existing IT infrastructure. Each system has the ability to be remotely viewed from anywhere around the world by simply logging in to the system via your web browser. The included multi-host software allows multiple DVR's to be connected on a network to provide simultaneous viewing and control of up to 256 cameras. Supports an additional 4 hard disk drives allowing for a maximum of 5TB to be utilised.

### 16 Camera Channel MPEG4 Digital Video Recorders with CD / DVD BURNER and Network Functionality

Video Compression Format	MPEG4
Recording Resolutions	352 x 288
Max. Recording Frame Rate	50FPS Global
Max. Display Frame Rate	50FPS Global
Backup Methods	CD / DVD / USB
Hard Drive Bays	5
Network Functionality	Live View / Live Recording / Search / Setup / Backup

Part No.  
DVRGOLD50L



## PLATINUM SERIES

The Next Generation top of the range DVR PLATINUM SERIES features 400FPS display rate (REAL TIME) which is essential for prolonged periods of video monitoring (as it eliminates headaches and sore eyes). The PLATINUM100L has a 100FPS global recording frame rate and the PLATINUM200L has a 200FPS global recording frame rate. On each machine the user can select to record in either Standard Resolution or High Resolution. Each system has the ability to be remotely viewed from anywhere around the world by simply logging in to the system via your web browser. The included multi-host software allows multiple DVR's to be connected on a network to provide simultaneous viewing and control of up to 256 cameras. The DVR Platinum Series supports an additional 4 hard disk drives allowing for a maximum of 5TB to be utilised.

### High Resolution Linux Based Digital Video Recorder Systems

Video Compression Format	MPEG4
Recording Resolutions	352 x 288 / 704 x 576
Max. Recording Frame Rate	100 / 200 FPS Global
Max. Display Frame Rate	100 / 200 FPS Global
Backup Methods	CD / DVD / USB
Hard Drive Bays	5
Network Functionality	Live View / Live Recording / Search / Setup / Backup

Part No.  
DVRPLATINUM100L  
DVRPLATINUM200L





**OTHER 'SPECIAL PURPOSE' DIGITAL VIDEO RECORDER SYSTEMS AVAILABLE**

# HYBRID DVR

Combines your IP & Analogue cameras on one high performance hybrid DVR system.



# WIRELESS DVR

Provides wireless digital surveillance and video recording from anywhere utilising IP cameras.



\* Please contact our technical sales team for further information & pricing on these units.

## DIGITAL VIDEO RECORDER CAPTURE CARDS



### 4 Camera Channel, 25 Frames Per Second

- Video inputs: 4-16
- Global framerate: 25
- Supported resolution: 352 x 288
- Digital input / outputs: 16/4 optional
- Monitor outputs: 1
- Hardware watchdog: Yes

Part No.  
HICAP25CB4



### 16 Camera Channel, 50 Frames Per Second

- Video inputs: 16
- Global framerate: 50
- Supported resolution: 352 x 288
- Digital input / outputs: 16/4 optional
- Monitor outputs: 2
- Hardware watchdog: Yes

Part No.  
HICAP50CB



### 16 Camera Channel, 100 Frames Per Second

- Video inputs: 16
- Global framerate: 100
- Realtime display: Yes
- Supported resolution: 352 x 288 / 704 x 288/ 704 x 576
- Audio inputs: 16
- Onboard RS-485: Yes
- Digital input / outputs: 16/16 optional
- Monitor outputs: 1
- Hardware watchdog: Yes
- Available in 8 channel

Part No.  
PLATCARD100



### 16 Camera Channel, 200 Frames Per Second

- Video Inputs: 16
- Global framerate: 200
- Realtime display: Yes
- Supported resolution: 352 x 288 / 704 x 288/ 704 x 576
- Audio inputs: 16
- Onboard RS-485: Yes
- Digital input / outputs: 16/16 optional
- Monitor outputs: 1
- Hardware watchdog: Yes
- Available in 8 channel

Part No.  
PLATCARD200

## DVR & VIDEO SURVEILLANCE ACCESSORIES



### 19" Rack Mount DVR Case (3RU)

The 19" rack mount DVR case comes supplied with all the cabling required to connect your DVR components.

\* Power supply not included

Part No.  
DVRCASE3

## High Quality Rackmount Cabinets



- Available in 3 Sizes:
  - 18RU ( W600 x D450 x H950mm )
  - 27RU ( W600 x D800 x H1400mm )
  - 37RU ( W620 x D800 x H1800mm )
- Glass front panel with deluxe lock
- Metal side panels
- Metal rear door with lock
- Inbuilt cooling fans
- 4(18RU) & 6 outlet universal power adaptor sockets
- Base with four twin castor wheels (2 with brakes) stands also available

Part No.  
RACKMOUNTCAB18  
RACKMOUNTCAB27  
RACKMOUNTCAB37

## 8 Port Rack Mount KVM Switch



Featuring a console port to connect your shared keyboard, video and mouse to up to 8 individual computers / servers / DVRs.

- 8 Port 19" Rackmount PS/2 KVM Switch in Metal Enclosure
- PS/2 Style Keyboard and Mouse Control
- Direct Channel Selection and Operation Using Front-Panel Push Buttons and Keyboard Hotkeys
- Support for DOS, Windows 95/98/SE/ME/2000/XP, Linux etc
- LED Indicators for Easy Port Status Monitoring
- Also Available in 2, 4 & 8 Port Non-Rack Mount Versions

Part No.  
KVMRACK



### 1.8 Metre KVM Cable

Part No.  
KVMCABLE1.8

## DVR & PC DISPLAY MONITORS



### 17" LCD Monitor - Designed For The Security Industry

This monitor has been designed specifically for use within the security industry with a protective glass screen and is suitable for use with both PC based & standalone DVRs. It is ideal as a direct replacement for old CRT style monitors as it features a BNC video-in and a BNC video output (loop through) allowing you to connect multiple monitors in series.



- > Features a Scratch & Shock Resistant Protective Glass LCD Cover Shield
- > High Resolution: 1280 x 1024 Maximum Resolution
- > Super-Fast 8ms Response Time
- > 3 Year Limited On-Site Warranty

- 500TVL video resolution
- High brightness & contrast - 300cd/m<sup>2</sup> brightness and 500:1 contrast ratio
- BNC composite video in/out connections
- Built-in speaker
- Wall mountable (VESA standard)
- Video inputs: VGA using D-Sub, composite using BNC

Part No.  
VSDV174BP



### 19" LCD Monitor

- Resolution: 1280x1024/SXGA
- Contrast ratio: 500:1
- Display area: 338 mm x 270mm
- Response time: 8 ms
- Dimensions: 378 (W) x 404 (H) x 190 (D)mm

Also available with Composite Video Input - Model: TFT19V



Part No.  
TFT19  
TFT19V



### CRT Monitor Wallmount Bracket

Available for 15" and 21" CRT monitors

- For 15" CRT's (VSCA14)
- For 21" CRT's (VSCA19)

Part No.  
VSCA14  
VSCA19

### LCD/TFT Screen Wall-Mount Bracket with Tilt



- Designed for LCD / TFT Screens up to 23" with either 75mm or 100mm VESA ® fixings
- Can be Tilted 17° Up or Down
- Supplied with Standard VESA Mounting Plate
- Mounts screen only 55mm from wall
- Locking screw and Allen Key for added security
- Max Load 20Kg
- Ceiling mount available

Part No.  
TFTBRACKET

**POWER SUPPLIES**



**12VDC/ 12Amp 18 Output CCTV Power Supply**

This power supply has been designed specifically for use in the CCTV industry. It utilises Switch Mode Technology to enable efficient operation and compact design. All 18 channel outputs are individually fused, have on/off LED indicators and separate terminal blocks to allow simple connection. It is supplied in a sturdy, lockable housing with pre formed entry points for ease on installation.

- Output power: 145W
- Outputs can be connected parallel for connecting cameras with >500mA draw
- Dimensions(mm): 312(H) x 205(W) x 50(D)
- Not suitable for use outdoors

- Efficient compact design
- 18 individual 500mA fused outputs
- Lockable metal housing
- Input voltage: 240V AC
- Output current: 18 x 500mA fused outputs (12A max)

Part No.  
PS12V10A18CH



**12VDC/ 12Amp 18 Output CCTV Power Supply with Battery Backup**

- Specifications as per PS12V10A18CH
- Allows for 2x 12VDC 7Amp backup batteries (see page 32)

Part No.  
PS12V10A18CHBB



**Low Voltage AC Adaptor 24V AC 2.0 Amp**

- Input - 240V AC / 50Hz
- Output - 24V AC / 2.0 Amp
- Input lead - 1.8m
- Output lead - 1.8m
- Termination - Bare ends

Part No.  
PS24VAC2AMP



**Switch Mode AC Adaptor 12V DC, 1.5 Amp**

- Input - 100-240V AC / 50Hz
- Output - 12V DC / 1.5 Amp
- Lead - 1.8m
- Termination - DC plug

Part No.  
PS1500SM



**Switch Mode AC Adaptor 5VDC, 2.5 Amp**

- Input - 100-240V AC / 50Hz
- Output - 5VDC regulated / 2.5 Amp
- Lead 1.8m
- Termination - DC plug

Part No.  
PS5VDC



**Switch Mode Power Supply 12V DC, 5 Amp**

- Input - 100-240V AC / 50Hz
- Output - 12V DC / 5.0 Amp
- Input lead - 1.5m
- Output lead - 1.8m
- Termination - DC plug

Part No.  
PS5000SM

**UN-INTERRUPTED POWER SUPPLIES**

**PRO Series Highly Reliable Line Interactive UPS**

Suitable for DVR's, PC Workstations & Printers



- Wide input voltage window
- Boost and buck AVR
- Compatible with generators
- Provide LED and audible alarm function
- Surge protection
- Protection for short circuit and battery low voltage
- Automatic diagnostic on startup

Part No.	Capacity
UPS600VA	600VA/360W
UPS1000VA	1000VA/600W
UPS1400VA	1400VA/840W
UPS2200VA	2200VA/320W



**SMART Series Highly Reliable Line Interactive UPS**

Available in Tower or Rackmount Style

- Suitable for DVR's, PC workstations & networks
- 19" rack mount or tower
- Sine wave output
- Monitoring & control software
- Modem & LAN protection
- Notifies users when batteries need to be changed
- Performs self test at regular intervals
- LCD with more than 20 items on display
- Smart power for servers and networks



**RACK-MOUNT (VASRM)**

Part No.	Capacity
UPS1000VAS	1000VA/600W
UPS2000VAS	2000VA/1200W
UPS3000VAS	3000VA/1800W
UPS5000VAS	5000VA/3000W
UPS1000VASRM	1000VA/600W
UPS2000VASRM	2000VA/1200W
UPS3000VASRM	3000VA/1800W
UPS5000VASRM	5000VA/3000W

## CONNECTERS CABLES & CABLE ACCESSORIES



### Connector Strip with Screw Terminals for Distributing Power to Cameras

- One Input
- 8 Outputs
- Polarity Markings

Part No.  
VSTBB



### 5-Way Power Splitter

- One DC Power Jack Input
- Five DC Power Jack Outputs

Part No.  
DC4CHLOOM



### Combined Power & BNC Video Leads

Pre-terminated cables with no crimping required. Your plug & play solution!

- Please note: The above power / video leads are not suitable for cameras which draw more than 1 Amp of current

Part No.	Length
RCA4CHLOOM10M	10m
RCA4CHLOOM20M	20m
RCA4CHLOOM30M	30m

### Coaxial Connector Cable Crimping Tool with 5 Jaws



- Designed to crimp BNC/TNC connectors to RG58C/U and RG62 coaxial cable as well as the centre pin to the centre conductor
- Insulated handle and tension 6 position adjustment
- Hex sizes: 1.7, 2.5, 5.4, 6.5, 8.2mm

Part No.  
TSA50



### Coaxial Cable Stripping Tool

- Coaxial cable stripper which suits RG58/59/6 cable
- Fitted with 3 blades to suit 4 cable diameters
- This 3 position stripper will strip cable revealing braid, dielectric and centre conductor

Part No.  
VSA18

### 1 Channel Twisted Pair to BNC Video Balun with Power



This device reduces the cost of cabling and eliminates the need for video amplifiers. By utilising UTP (Unshielded Twisted Pair) cable you can transmit all composite video signal sources (bandwidth DC-6MHz) or audio sources (bandwidth 0-15KHz) up to 600 metres away (B&W) or 300 metres away (Colour) and up to 1200 metres away for items with an amplifier circuit.

Part No.  
VSBALCAT54



### 4 Channel Video Balun

This 4 channel video balun TX/RX can connect up to 4 video cameras to a single CAT 5 cable. This is ideal for use in areas where large amounts of cables are required as CAT 5 cable is significantly cheaper than the more traditional coaxial cable. Compatible UTP cables include CAT-5, CAT-6, CAT-7; compatible coaxial cable includes RG-59 and RG-6.

Approximate Transmission Distances:

- Solid wire: 500 metres for B&W video signal, 300 metres for Colour
- Stranded wire: 360 metres for B&W video signal, 180m for Colour

Part No.  
VSQC-3427



### 1 Channel Video/Audio Balun

This 1 channel balun TR/TX not only has a BNC socket, but it also comes with 2 RCA sockets for audio transmission support. This device converts video camera cabling and increases transmission distance by converting the signal from coaxial to CAT 5 Cable.

Part No.  
VSQC-3424

### Coaxial Cable



- 100m Roll
- RG59 - 75 Ohm

Part No.  
DCOAX



### Combined Coaxial Cable & Fig. 8

- 100m Roll
- RG59 - 75 Ohm

Part No.  
DCOAXPWR24FC



**8 Channel BNC to VGA Lead**

- For use with HICAP cards only

Part No.  
OCTOBNC



**BNC / RCA Adaptors**

- BNC - RCA adaptor
- RCA - BNC adaptor

Part No.  
VSFB2R, VSFR2B



**BNC / 'T' Connector**

- BNC - T Connector

Part No.  
VSFBTA



**BNC Connector**

- BNC - Standard compression type

Part No.  
VSFBNC



**Inline BNC Connector, Socket to Socket**

Part No.  
VSFB2B



**Twist BNC Connector**

- Installer can fix this BNC plug by hand
- More reliable than crimp style

Part No.  
VSFBNCTWIST



**RCA Line Plug**

- Red & Black Colour

Part No.  
VSFRLPR  
VSFRLPB



**DC Power Connector Plug**

Part No.  
VSFDCP



**DC Power Connector Socket**

Part No.  
VSFDCPF2.1



**RCA Extension Leads (3 x RCA To 3 x RCA)**

- For Splitting 1 video signal into 4, without signal loss
- 1 x composite video input
- 4 x composite video outputs
- Power: 240 VAC

Part No.	Length
RCA315	1.5 METRE
RCA330	3 METRE

**VIDEO SURVEILLANCE PROTECTION EQUIPMENT**

**At Last - Real Protection For All Your Video Surveillance Equipment...**



Did you know that it is common for video surveillance equipment such as DVR's, cameras, PTZ controllers, multiplexers & any other devices connected by coaxial cable, CAT5 or Fig 8, to be susceptible to damage caused by lightning strikes, power surges, and earth loops? This is due to the physical length of the ground wires.

These Surge Protectors & Filters protect your surveillance equipment by passing the hazardous voltages to ground and filtering out noise with total galvanic isolation which eliminates earth loops and hum bars.



**Coaxial Surge Protection - BNC Connector Simple 'in-out' Surge Protection for CCTV Cameras**

- Surge protection attack time: 100ns
- Maximum surge current: 5000A
- Dimensions: 78mm X 25mm X 25mm
- Weight: 80g

Part No.  
VSSPB



**UTP Data Surge Protection - Terminal Block Simple 'in-out' Surge Protection for PTZ Controllers or Data Wires**

- Surge protection attack time: 100ns
- Maximum surge current: 5000A
- Dimensions: 45 X 25 X 25mm
- Weight: 74g

Part No.  
VSSPU



### UTP Video & Data Surge Protection - RJ45 Connectors Simple 'in-out' Surge Protection for IP Cameras & Network Devices

- Surge protection attack time: 100ns
- Maximum surge current: 50,000A
- Dimensions: 32mm X 45mm X 72mm
- Weight: 105g

Part No.  
VSSPR



### Ground Loop Isolator

- 75 ohm BNC Male to 75 ohm BNC Female
- Transient Voltage Suppressor: 12 Volts rms
- BNC Male with 100 mm miniature coaxial cable input and BNC Female output
- Isolation Voltage: 750 Volts DC
- Insulation Resistance: >100 M ohm
- Dimension: 50 x 30 x 25 mm

Part No.  
VSVSI

## WIRELESS TRANSMISSION PRODUCTS



### 4 Port ADSL Router Modem

- Four 10/100Mbps ethernet ports for connection to computers
- DHCP automatically and dynamically assigns all LAN IP settings to each host on your network
- Easy installation: uses a web-based graphical user interface program for convenient management access and easy setup
- VPN support (L2TP, PPTP, IPSec)
- Support for static IP, dynamic IP and PPPOE connections

Part No.  
ADSLROUTER2



### Wireless 4 Port Network Router Modem

- Wi-Fi enabled computers/DVRs and devices can wirelessly connect and share a single incoming Internet Connection
- Four 10/100Mbps ethernet ports for connection to computers
- DHCP automatically and dynamically assigns all LAN IP settings to each host on your network
- Combined wireless ADSL modem & 802.11g wireless router in one
- Easy Installation: Uses a Web-based Graphical User Interface program for convenient management access and easy setup
- VPN support (L2TP, PPTP, IPSec)
- Wireless signal rates: IEEE 802.11b: 11, 5.5 and 1Mbps  
IEEE 802.11g: 54, 48, 36, 24, 18, 12, 9, 6Mbps

Part No.  
ADSLROUTERW



### Analogue Super Mini 2.4GHz 3-Channel Wireless AV Kit

- 2.4GHz transmitter & receiver
- Option to select up to 3 channels
- Super mini size
- Auto switch channel
- Transmits and receives video & audio (Stereo)
- Channel indicator LED
- Potential range up to 100 metres
- Easy installation
- Included 2 power supplies
- Weatherproof housing unit option available

Part No.  
VS15-2400AK2



### 2.4GHz Directional RF Yagi Antenna

- 2.4GHz directional RF Yagi antenna
- Antenna gain: 15dB
- Dimensions: 475(L) x 425(W)

Part No.  
MWYAGIR8215



### 2.4GHz Directional RF Patch Antenna

- 2.4GHz directional RF antenna
- Connector: N female
- Antenna gain: 14dB
- Impedance: 50 Ohms
- Dimensions: 240(L) x 240(W) x 60(D)mm

Part No.  
VS15-2400AP14



### Digitally Encrypted Wireless Video 2.4GHz Transceiver with PTZ Control

SmartSight Point-to-Point & video over IP solutions offer fully protected video signals using the latest encryption technology.

Eliminate the need to pull cable through walls, ceiling, rivers, freeways, or other obstacles separating sites.

- MPEG4 based wireless video to ensure long-term reliable installation and high interference resistance
- Compact, weatherproof design
- Up to 20 Km line of sight with optional high gain antennas
- Auto detect frequency - 'plug and play' set-up
- Transparent connectivity to all serial based motorised domes, PTZ cameras, and other serial devices
- Optional bi-directional audio interface enabling support of gate access phone, public address systems, etc
- Simple connectivity to PIR detectors, audible alarms, and other sensors/alarms using programmable digital inputs and relay outputs
- Available in 12VDC or 24VDC versions

Part No.  
VSS1100



## Transmit Wireless Video Over 25km 5.8GHz Wireless Long Range Transmission Kit

This outdoor wireless point-to-point transmission kit is ideal for outdoor use and can be used directly with IP cameras or analogue cameras with a video to IP converter. It has a transmission range of up to 25km (Dependent on environmental factors). Additional modules may also be purchased to enable point-to-multipoint transmission. Can be used as a long range bridge for IP networks.

Includes:

### 2 x 5.8GHz long range wireless ethernet bridges

- High power 200mW output
- High capacity 108Mbps data rate
- IP68 die-cast all weather housing
- 152-bit WEP data encryption
- Up to 16 point to multipoint bridge links
- 802.11H smart DFS bridge support

### 2 x Panel antennas

- 21 dBi Gain
- Horizontal 40o Vertical 40o Beamwidth
- Weight - 1.5kg
- Dimensions (mm) - 300(L) x 300(W) x 50(D)
- Wall mount or swivel brackets

### 1 x Connection cable

- For connection from bridge to antenna

Part No.  
VSBR108KIT



## Totally Wireless Long Range Surveillance Cameras

This range of solar powered surveillance solutions has been developed due to the increasing demand for remote surveillance where cabling for both video and power is impossible or cost prohibitive. These systems provide a fully self-sufficient wireless surveillance solution, which can be customised to your individual requirements. There are 4 versions available depending on your individual needs:

### Solar Pole Only

Includes:

- 1 x 5.8m galvanised steel pole with in-built 120 watt solar panel, 150Ah deep cycle lead acid battery (charged by solar panel) & dual 15 watt compact fluorescent light.

Part No.  
VSSOLARPOLE5.8M

### Solar Pole with Wireless Access Point (802.11G)

Designed to integrate with an existing WLAN. Sends high quality real-time encrypted digitised video and audio using an outdoor WAP.

- Connect any type of IP device such as camera or network server
- Analogue video signal cameras can also be connected utilising an optional web server.

Includes:

- 1 x 2.4GHz outdoor weatherproof wireless access point (802.11G)
- 1 x Solar Pole (as above model - VSSOLARPOLE5.8M)

Part No.  
VSSOLARPOLE5.8MW

### Solar Pole with Wireless Next G™ Modem

Facilitates remote installation of IP based equipment. Suitable for IP cameras & network servers. Transmits over the Telstra Next G™ mobile network. Allows you to remotely access your equipment from virtually anywhere. Ideal for remote location, rapid deployment applications and event security.

- Connect any type of IP device such as camera or network server
- Analogue video signal cameras can also be connected utilising an optional web server.

Includes:

- 1 x Wireless Next G™ modem / router
- 1 x Solar Pole (as above model - VSSOLARPOLE5.8M)

\* Telstra Next G™ access plans available separately

Part No.  
VSSOLARPOLE5.8MNG

### Solar Pole For Point to Point Digital CCTV Transmission with Pan/Tilt/Zoom Control

Designed to send high quality real-time encrypted digitised video and audio up to 5km (LOS). Connect to composite video input on any DVR, supports RS485 & RS232 transmission (including PTZ) as well as alarm inputs & outputs

- Connect any analogue CCTV camera
- Can be used for bi-directional audio interface enabling support of gate access phones, public address systems etc.

Includes:

- 2 x Smart Sight 2.4GHz digitally encrypted wireless video transceivers with PTZ control,
- 1 x Solar Pole (as above model - VSSOLARPOLE5.8M)

Part No.  
VSSOLARPOLE5.8MA



# **Alarms & Surveillance Products**



**BACK TO BASE MONITORED  
ALARM SYSTEMS**

**PAGE 24**

**WIRELESS & HARDWIRED ALARM  
SYSTEMS WITH SMS**

**PAGE 25**

**ENERGY SAVING DEVICES  
(ENSA)**

**PAGE 33**

**PACKAGED PLUG & PLAY  
SURVEILLANCE KITS**

**PAGE 34**

**FIRE SAFETY & ELECTRONIC ARTICLE  
SURVEILLANCE (EAS)**

**PAGE 35**

## PROFESSIONAL BACK TO BASE MONITORED WIRELESS ALARM SYSTEMS FOR HOME OR OFFICE

The Watchguard™ Digital Series is a true revolution in monitored back to base alarm systems. Utilising a compact main control unit with inbuilt communication dialer and advanced wireless component technology means installation is very simple. The wireless design allows you to expand or relocate any of the systems at anytime. They are truly "plug & secure" systems, without any complicated programming or cabling. See below and overpage for full system features, operation and expansion details. Remote programming software download available.

### MAIN FEATURES:

- Expandable up to 8 individual zones
- Easy to install & operate
- Around the clock 24hr protection
- Connects to existing phone line
- Automatically communicates with back to base monitoring centres

### HOW THIS SYSTEM WORKS:



When smoke, intruder or help signal is detected, an alarm signal will send to the communication dialer



This is the "brain" of the system, when an alarm code is received from the Movement Sensor, Smoke Sensor or Panic Button, the communication dialer automatically connects to your monitoring centre via your phone line & transmits the detailed alarm activation data in (Contact ID Format). The in-built alarm siren will also sound, but can be disabled if used as a "Hold-up Button".



## Alarm Monitoring Centre

The communication dialer connects to your monitoring centre and they will notify security, police, fire or medical services when an emergency arises. Please contact your preferred monitoring service provider to discuss their individual monitoring service plans, notification method and charges.



You will also receive notification of the alarm event: "Hello John. This is Sally from the monitoring centre. Your alarm system at 3 Main Street Springville has been activated at 11:14am by the smoke sensor in your master bedroom."



### Wireless Alarm System for Home or Office

The WGDIGITAL is a high-quality, anti-intruder professional grade monitored security system. Once installed simply use the remote control button to arm the system before you leave your premises. If movement is detected after the system has been armed, the communication dialer will transmit the detailed alarm activation data (Contact ID Format) via phone line to your monitoring centre for appropriate response action to be taken.

### SYSTEM INCLUDES:

- 1 x MAIN CONTROL UNIT - COMMUNICATION DIALER
- 2 x WIRELESS MOVEMENT SENSORS  
Designed to detect the body movement of an intruder inside your premises.
- 2 x CODE HOPPING REMOTE CONTROLS  
Allow you to easily arm and disarm the system or activate the panic facility from virtually anywhere around your premises.
- 1 x POWER SUPPLY & 1 x PHONE CONNECTION LEAD



Part No.  
WGDIGITAL



### Wireless Fire Detection System for Home or Office

The WGSMOKE is a high-quality, monitored wireless fire detection system which is quick and easy to install and operate. When smoke is detected not only will the smoke sensors in-built siren sound, but the alarm siren built into the main control unit will also sound in unison. The communication dialer will transmit the detailed alarm activation data (Contact ID Format) via phone line to your monitoring centre for appropriate response action to be taken.

### SYSTEM INCLUDES:

- 1 x MAIN CONTROL UNIT - COMMUNICATION DIALER
- 2 x WIRELESS SMOKE SENSORS - AS/NZS 3786:1993  
Designed to detect the presence of smoke inside your premises using gas ionisation technology. In-built siren & low battery warning.
- 1 x POWER SUPPLY & 1 x PHONE CONNECTION LEAD



Part No.  
WGSMOKE



### Wireless Emergency Duress System

The WGEDS is a system which in the case of emergency or duress is manually activated by pressing the wireless panic button to alert your monitoring centre. Once a button is pressed detailed alarm activation data in (Contact ID Format) is immediately sent via your phone line to your monitoring centre for appropriate response action to be taken. Up to 8 individual emergency buttons can be used with your Watchguard™ Emergency Duress System and each button can be individually identified by the monitoring centre (i.e. Grandma's button, Grandpa's button... etc).

### SYSTEM INCLUDES:

- 1 x MAIN CONTROL UNIT - COMMUNICATION DIALER
- 2 x WIRELESS EMERGENCY PANIC BUTTONS  
Designed with the elderly or invalid person in mind. Large rubber button. Nylon lanyard included. Splashproof. Dipswitch coding. Operating range up to 100m (line of sight)
- 1 x POWER SUPPLY & 1 x PHONE CONNECTION LEAD



Part No.  
WGEDS

## WIRELESS ALARM SYSTEMS WITH 2-WAY COMMUNICATION VIA SMS MESSAGING

### Watchguard™ SMS Caravan/Portable Home or Business Alarm with 2-Way GSM Communication Via SMS Messaging

The Watchguard™ SMS enables 2-way communication via SMS Text Messaging between you and your alarm via your GSM mobile phone. This product may be used for multiple applications, including caravans, garages or anywhere where a portable, self-monitored alarm is required. It is a sophisticated alarm system using the latest GSM communications and wireless alarm technology.

- Arm and disarm the alarm using the supplied remote controls or from your mobile phone via SMS
- Remote notification by SMS if the alarm has been triggered and cause
- Up to 5 mobiles can be stored & sent notifications (programmable)
- Watchguard™ SMS will ring if no response to SMS alarm notification
- Programmable 6 digit PIN code for secure operation
- 3 relay outputs remotely controlled via SMS (negative outputs)
- Positive acknowledgement of ALL SMS commands sent to the Watchguard™ SMS
- Request a status report from the alarm system via SMS
- Learn new remote controls using SMS commands (i.e. used if you lose both remote controls)
- Remote SMS panic that notifies all programmed mobiles
- Warning of no phone coverage on arming (i.e. no GSM service/coverage)

\* SIM card required



Part No.  
WGUARDSMS



### Watchguard™ Marine Security System With 2-Way GSM Communication Via SMS Messaging

The Watchguard™ Marine SMS enables 2-way communication via SMS text messaging between you and your vessel via your GSM mobile phone. The system protects your boat at your marina, private jetty or anywhere within mobile coverage from your chosen network provider. It is a sophisticated alarm system using the latest GSM communications and wireless alarm technology. If an intruder boards your vessel or smoke is detected, alert messages will be sent to up to 5 mobiles.

\* SIM card required

\* Mobile phone not included



Part No.  
WGUARDMARINE

## WIRELESS ALARM SYSTEMS



### Watchguard™ Wireless Home or Office Alarm System

The Watchguard™ alarm is a complete stand-alone security system, which is ideal for the home or business owner wanting an affordable security system without a monitoring service. It is very reliable and extremely easy to install and operate. If the alarm is triggered, both the external and internal sirens will sound to repel intruders.

- Feature packed 8 zone security system - can be expanded using the range of Watchguard™ wireless accessories featured on pages 26-27 incl. reed switches and smoke sensors.
- Easy wireless installation
- 2 x quality wireless passive infrared detectors
- 2 x high security code hopping remote controls with lithium batteries
- Emergency panic function via remote control
- Backup battery & mains power adaptor
- Powerful external siren with flashing blue strobe
- Has the same appearance as security industry standard alarm systems
- High frequency internal siren to repel intruders



Part No.  
WGUARD



### Watchguard™ Fire & Theft - Complete Burglary & Fire Detection System for Your Home or Office

The Watchguard™ Fire & Theft is a complete burglary and fire detection system suitable for your home or office. When the system detects the body movement of an intruder, or senses smoke inside your building, the alarm will activate both the internal siren as well as the external siren with flashing blue strobe. The system is very easy to use and install.

- Latest supervised wireless detector & code hopping remote technology
- Feature packed security system with simple wireless installation
- AS3786 approved wireless gas ionisation smoke sensor
- Can be expanded using the range of Watchguard™ wireless accessories reed switches & smoke sensors
- High frequency internal siren to repel intruders
- Professional grade, high quality components
- Emergency panic function via remote
- Backup battery & mains power adaptor
- Powerful external siren with flashing blue strobe



Part No.  
WGUARDFT

## WIRELESS ALARM ACCESSORIES



### Wireless External Siren

- Wireless external siren with flashing blue strobe and backup battery
- 10m of cabling pre-terminated for "plug & secure" installation
- Includes low voltage plugpack
- Sends tamper, low battery & supervision signals

Part No.  
WSIREN



### Wireless Solar Siren

- Wire-free operation – No cable required
- In-built solar panel to charge internal battery
- 40 days of continuous operation without sunlight once charged
- Incorporates powerful 105dB/M siren & blue strobe light
- High capacity 6V 1.2 Ah sealed acid rechargeable battery
- Tough polycarbonate housing
- In-built tamper switch to activate siren in case of unauthorised removal
- Weatherproof for outdoor use.

\* Also available with interface transmitter for use with other alarm control panels (see page 28 for full details)

Part No.  
WSSOL



### Wireless Supervised PIR Detector

- Dual Edge™ PIR Sensor Technology
- 12m detection range
- Compact & elegant design with swivel bracket for easy installation
- Intelligent power saving mode
- Up to 3 years life from 2 x CR2450 lithium batteries
- Selectable pulse count

Part No.  
PIRW3



### Wireless Supervised Reed Switch/Universal Transmitter

- Used on doors and windows
- Also has inbuilt terminals for use as universal transmitter
- Up to 5 years life from 2 x CR2450 lithium batteries

Part No.  
WREEDI



### Wireless Supervised Smoke Detector AS/NZS 3786:1993

- Gas Ionisation type
- Inbuilt piezo siren
- 9 volt alkaline battery
- Audible low battery warning

Part No.  
SMODETW



### Wireless Supervised PIR Detector (Outdoor)

- Fully sealed UV resistant housing for outdoor use
- 4 selectable coverage patterns (wide angle 10m, curtain 10m, long range 20m & vertical curtain 3m)
- 9 volt alkaline battery provides approx. 1 year life
- Communicates alarm, low battery & supervision signals
- Works with all of our Universal Receivers & Alarms
- High quality TAKEX sensor – Made in Japan

Part No.  
PIRWOD



### Wireless Mini Numeric Keypad

- Allows arm / disarm, home mode & panic functions
- Backlit rubber buttons
- Only 45 x 55mm.
- Code Hopping Technology
- Wall mount or portable
- Selectable 4 digit PIN number

Part No.  
WKP



### Large Wireless Numeric Keypad

- Large conventional size wall mountable keypad with flip-down front cover
- Allows arming & disarming of your system via PIN number
- 9 volt battery powered
- User programmable 4-digit PIN code
- Low battery indicator
- Back-lit keys for night time illumination
- Weatherproof for indoor or outdoor use (under cover)
- Allows single key arming for both home & away modes and panic (WKP model requires you to enter pin number first)

\* For use on WGDIGITAL only (see page 24)

Part No.  
WKPL



### Personal Emergency/Panic Pendant

- Designed with the elderly or invalid person in mind
- Large 'easy push' rubber button
- Nylon lanyard included allows it to be worn safely around the neck
- Splashproof design
- Dipswitch coding

Part No.  
WPANIC



## Wireless Emergency Duress "Mushroom" Button

- Large industrial grade switch
- Inbuilt fixed code transmitter
- LED indicators for activation and low battery
- Optional external power supply

Part No.  
MBTX

## REMOTE CONTROLS



### 2 Button Remote Control

- 2 button high security code hopping remote control
- Allows you to easily arm & disarm a Watchguard™ alarm system from anywhere around your premises without having to remember a pin number or always enter /exit through the same door to access a keypad
- Can also be used to trigger your alarm system in case of duress
- Supplied with long life lithium batteries
- Suitable for use with all Watchguard™ alarm systems

Part No.  
GTTX



### 4 Button Remote Control

- 4 button high security code hopping remote control
- Supplied with long life lithium batteries
- Uses four individual colours for easy button identification
- Suitable for use with all Watchguard™ alarm systems and Watchguard™ 4 Channel Multi-Function Receiver (Model No: RXPROR4 see page 27)

Part No.  
RCTX4-U



### Programmable 4 Button UHF Learning Remote Control

The PTX programmable remote control can duplicate a majority of fixed code remote controls (not code hopping remotes). Fixed code means that each time the remote control is pressed, the same code is transmitted each time. The PTX remote has four buttons so that it will universally suit most alarms i.e. some remotes have just one button for arming / disarming, where others may have separate buttons for multiple functions. The same code can be copied onto multiple buttons if desired. If your original remote has a function controlled by pressing multiple buttons together, you must duplicate that code to a single button on your PTX.

- 4 channel programmable remote control
- Many uses including car alarms, home alarms, panic buttons, garage doors...
- Copies most radio frequency fixed code remote controls
- Replaces old worn out remote controls
- Learns in seconds
- Frequency range 255-500 MHz
- Battery included

Part No.  
PTX

## UNIVERSAL TRANSMITTERS & RECEIVERS

### 2 Channel Transmitter / Receiver Set - 433.92 MHz



This product is designed to be simple and easy to use. It has simple wiring connections and can be used in a variety of applications. Primarily, this product can be used to remote control your car, garage door, home alarm system, or your electric gate. The list of items you can interface into is almost endless.

The unit is supplied with 2, dual button remote controls which have an operating range of approximately 100 metres (line of sight – subject to environmental conditions).

The remote controls for this unit operate using code hopping technology. This is otherwise known as anti code grabbing or anti scanning type. This leading-edge technology prevents unauthorised copying of your remote control. This technology sends a unique and different code each time any of the remote control buttons are pressed.

Suitable for use with:

Electric garages / gates

Vehicle central locking

Home security systems

Most devices that allow remote on / off operation

To replace your old, large & low security remotes

- 1 second (momentary) negative outputs for each channel
- Separate latched negative output for channel 1
- Flashing 12V LED output for channel 1, i.e.- flashes when the button is pressed, stops when it is pressed again
- Can store up to 15 remote controls in total
- Up to 100m radio frequency range (line of sight)

Part No.  
RCX



### 4 Channel Multi-Function Receiver / Transmitter Set - 433.92 MHz

The RXPROR4 is an advanced multi-purpose 4-channel narrow-band UHF receiver / transmitter set with fully programmable relay outputs (1 amp rating). It is supplied as standard with 2 x code hopping, 4 button remote controls with long life lithium batteries. It can be used to add Watchguard™ wireless alarm accessories to virtually any alarm panel or device (see page 26 for full details on wireless accessories)



Suitable for use with:

Electric garages / gates

Home security systems

Add wireless alarm sensors to any device

Most devices that allow remote on / off operation

To replace your old, large & low security remotes

- Up to 200m radio frequency range (line of sight)
- All outputs are individually programmable to suit almost any application (momentary, latched, timed or pulsed)
- Up to 5 high security code hopping remotes (anti-scan, anti-code grabbing) can be used
- Power supply requirement: 12VDC @ 500mA
- Compatible with Watchguard™ wireless alarm detectors
- Up to 4 wireless detectors can be used
- Supports detector low battery, supervision & tamper signal outputs
- Step by step programming via remote control & indication via feature and channel LED's

Part No.  
RXPROR4

### Universal Transmitter / Receiver Set for Alarm Control Panels - 433.92 MHz



Suitable for use with WIRELESS:

PIR Movement Detectors

Magnetic reed switches

Smoke sensors

Panic / duress buttons

This 8 Channel wireless narrow-band UHF 433.92MHz receiver / transmitter set will allow you to add remote on/off & panic functions to your alarm panel. It will also allow you to add up to 4 wireless sensors to your existing hardwired alarm panel.

The unit is supplied with 2 x remote controls which have an operating range of approximately 100 metres (line of sight – subject to environmental conditions).

- Code hopping remote control technology
- Remote functions include arm / disarm & panic
- Ability to quickly add or erase detectors from your system
- 4 wireless DETECTOR zones available
- Wireless detector supervision output
- Low battery warning output
- Detector tamper warning output
- Intelligent detector learning program to prevent accidental code duplication
- Memory recall function to identify individual detectors ending low battery or tamper codes
- Wireless detectors available include PIR's, reed switches, smoke sensors & panic buttons (see pages 26-27 for full details on wireless accessories)

Part No.  
KISSRX



### Wireless Solar Siren & Interface Transmitter

This system allows the Watchguard™ WSSOL solar siren to be used with most brands of alarm panels. The solar siren simply mounts to any external wall and the interface transmitter is connected to the siren output on your control panel. When the siren output is activated your solar siren will sound in unison and when the panel's siren output stops the cancel signal is sent to the solar siren.

**40 Days**  
continuous operation  
without sunlight

#### WIRELESS SOLAR SIREN / STROBE:

- Compatible with most brands of alarm control panels
- 40 day continuous operation without sunlight once charged
- Powerful 105dB/M siren & blue strobe light
- Inbuilt solar panel to charge high capacity 6V 1.2Ah acid battery
- Tough polycarbonate weatherproof housing for outdoor use

Part No.  
WSSOL+WSUTX

### More Solar Powered Products on Page 34



Wireless Solar Powered Surveillance Camera with Movement Sensor

## WIRELESS MINI ALARMS



### Wireless Intruder Alarm With Keypad

This wireless intruder alarm can be armed and disarmed with a personal 4 digit code which is programmed into the system using the keypad. Once armed it can detect movement up to 6m away. When motion is detected the powerful 130dB alarm will sound. Ideal for home, retail store, office, workshop or garden shed.

- 60 degree passive infrared beam detects movement up to 6m away
- Auto reset function
- Ultra- loud 130dB alarm
- 4 programmed security codes
- No wiring – easy installation
- Wall mounted or free-standing
- 30 second exit delay / 10 second entry delay
- Uses 4x AA batteries (not included)
- "Battery Low" indicator

Part No.  
WGMAK



### Mini Home Alarm With Infra-Red Remote Control

This security device can detect motion up to 6m away. The infrared remote control can arm and disarm the device simply at the push of a button providing a convenient alternative to a keypad control. This feature also enables the unit to be mounted out of reach making it more difficult for anyone to tamper with it.



- IR Remote control to arm / disarm
- 60 degree passive infrared beam detects movement up to 6m away
- Ultra - loud 130dB alarm
- 256 programmed security codes
- No wiring - easy installation
- Wall mounted or free-standing
- 30 sec exit / 4 sec entry delay
- Uses 4 x AA batteries (Not included)
- "Battery Low" indicator

Part No.  
WGMAIRR



### Portable PIR Safety And Security Light

This Portable PIR safety and security light can automatically switch on when it detects movement in low light conditions up to 5m. What makes it different from other motion sensing lights is that it is battery operated and it has a convenient "Pull Up" handle. It has an adjustable 'light on' timer and features an ultra bright Krypton bulb to give maximum evenly dispersed light.

- Retractable carry handle for ease of portability
- Light can auto switch on upon movement detection or manual light switch
- Can detect movement up to 5m away
- Adjustable 'light on' timer (Short = 15 sec / Long = 30 sec approx)
- Ultra bright Krypton bulb
- Large area evenly dispersed beam of light
- Uses 4 x C batteries (Not Included)



Part No.  
WGPPSL



### Motion Detector Alarm With Telephone Dialer

Once armed this device not only provides an effective motion detector alarm but it will also "Auto Dial" up to 3 phone numbers when an intruder is detected. You can program it to call your neighbour, police, and your mobile phone with a 6 second recorded message. The system is armed and disarmed with a personal 4-digit code, which is entered into the system via the keypad.

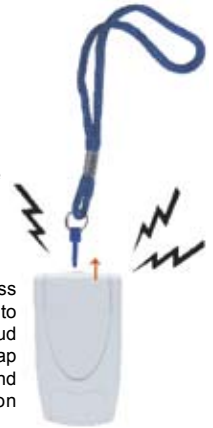
- Auto dialer, up to 3 programmable telephone numbers
- Passive infrared beam detects movement up to 6m away
- Ultra-loud 125dB alarm
- Easy to program 4-digit code
- No wiring - easy installation
- Auto reset function
- Wall mounted or free standing
- Record a 6 second message
- 30 second exit delay/ 10 second entry delay

Part No.  
WGMDATD

### Personal Alarm



- Pull wrist cord to activate
- 130dB loud siren
- Light weight
- Powerful alarm



Personal alarm also known as personal attack or duress alarm, offers a basic protection for your own safety. Designed to draw attention to any crisis, our 130db personal alarm is as loud as eight 100db alarms. The alarm is activated when the strap attached to the alarm pin is pulled. Attach to a belt or waist band for personal security or to a handbag/luggage for protection against theft.

Part No.  
WGPAA

## HARDWIRED PACKAGED ALARM SYSTEM



### Watchguard™ SMS8KITHW Complete Hardwired Alarm Kit with Telephone Dialer & SMS Messaging Function - Professional Grade

Provides personal security monitoring via your mobile phone using SMS messaging or optional high security 24 hour back-to-base monitoring. The SMS8 is a complete hardwired alarm system for your home or office including 3 high quality PIR movement sensors and 4 reed switches for your doors or windows. It is easy to program and can communicate alarm conditions with up to 2 people via their mobile phones. It is also possible to connect to a back-to-base monitoring service provider of your choice for a higher level of protection. Communication is sent using the industry standard Contact ID communication protocol.

Please note: a SIM card is NOT required - SMS messages are sent via your landline. The SMS messaging function can be disabled if desired so as to operate as a regular "dialer" alarm control panel only. All programming is done via a simple menu driven system, with large easy to read characters on an LCD keypad. The keypad is backlit for easy viewing at night.

The panel has been specifically designed in Australia to meet the requirements of the average home or office, and to be easily installed by either a trade professional or electronics handyperson.

- 8 hardwired zones
- Simple LCD menu driven programming
- One button "Quick Arming", plus "Home Arming" for arming only certain areas - ie. at night you can have the sensors in your living areas armed, but those in your bedrooms disarmed
- Panic, medical and fire emergency buttons
- Key-switch input
- On board modem with contact ID protocol for optional back-to-base monitoring
- Supports SMS text messaging of alarm information to two separate mobile phone numbers
- Telephone line fault monitoring
- Optional wireless receiver (Model No: SMS8RX) allows full remote control operation with a simple 2 wire serial interface connection (see page 30 for full details on the SMS8RX), PLUS the use of up to 8 Watchguard™ wireless alarm detectors. (see pages 26-27 for full details on wireless accessories)



\*Mobile phone not included

### System Includes:



1 x SMS8 Alarm Control Panel with LCD Keypad



1 x Outside Siren / Strobe



1 x Indoor "Top Hat" Piezo Siren



3 x High Quality PIR Sensors



4 x Surface Reed Switches for Doors or Windows



1 x Emergency Panic Button



1 x 7Ah Sealed Lead Acid Backup Battery  
1 x 16VAC Power Supply  
1 x 100m of 4 Core Alarm Cable

Part No.  
SMS8KITHW

## HARDWIRED ALARM ACCESSORIES



### SMS8RX Wireless Receiver for SMS8 Alarm Panel

The SMS8RX is a state-of-the-art narrow band wireless receiver, designed to operate with the SMS8 control panel. It has been specifically designed to enable easy installation with a simple 2-wire interface connection and is supplied complete with 2 high security code hopping remote controls. Remote functions include arm, disarm, home mode and panic. It features intelligent wireless detector learning allowing you to quickly add or erase up to 8 detectors from your system including PIR's, reed switches, smoke sensors and panic buttons. Low battery and detector supervision are also on board.



- Code Hopping remote control technology
- Remote functions include arm/ disarm, home arm & panic
- Ability to quickly add or erase detectors from your system
- 8 wireless detector zones available
- Wireless detector supervision
- Low battery warning
- Detector tamper warning
- Intelligent detector learning program to prevent accidental code duplication
- Memory recall function to identify individual sending low battery or tamper codes
- Wireless detectors available included PIR's, internal or external
- Reed switches & smoke sensors
- Compatible with all Watchguard™ wireless accessories (see pages 26-27 for full details on wireless accessories)



Part No.  
SMS8RX



### GSM Backup Module For Intruder Alarm Systems

In case your landline is sabotaged or is out of service, this GSM back-up device enables your security system to communicate with your monitoring centre via the mobile phone network.

It utilises a high quality GSM modem and is capable of sending (independently to your panel) its own periodic phone test, phone line failure or low battery message to 4 different receiver station phone numbers, via Contact ID protocol using the GSM network. Both pulse and DTMF dialing are supported and as the unit draws less than 100mA, it can be easily powered directly from your alarm panels 12VDC power supply.

- Backup phone line function: In case of the failure of your PSTN Line, the system simulates a virtual PSTN line over the GSM mobile network
- Supplied with stand off mounts to allow easy installation inside standard alarm panel boxes
- Default factory setting: If the connected PSTN landline is available, all calls will be made through the PSTN line. If the PSTN line ever fails, all calls will then be made via the GSM Network
- The unit is capable of sending (independently to your panel) its own periodic phone test, phone line failure or low battery message to 4 different receiver station phone numbers via contact ID protocol using the GSM network (Optional Use)
- Easy to comprehend LED status indicator for both GSM & PSTN landline
- GSM antenna supplied includes magnetic base for simple mounting to alarm control panel boxes
- 4 SMS controllable outputs allow additional functions such as remote arming, light control etc

Part No.  
GSMBU-PRO



### Hard-Wired 3 Zone Smart Voice Dialer

This SmartDialer is designed to connect to any security alarm control panel and enable the dialer to call any phone numbers programmed to it. The recorded messages played during the phone calls will alert either the homeowner or a second party to take the relevant action required.

- Responds to panic key, fire, medical & intrusion trigger
- Universal design, compatible with any brand of alarm controllers
- Allows single-zone / 3-zone connection
- Non-Volatile Memory (NVM) stores all the preset phone numbers, recording messages and settings permanently in case of power failure
- Up to 32-second recording time which can be divided by 1~4 messages
- Compatible with N.C. & Normal Hi, N.O. & Normal Low
- Detects dial tone, busy tone, and ring back tone
- Tone (DTMF) signal confirmation facility allows the designated recipient to confirm after receiving the recorded messages.
- Alarm memory facility

Part No.  
HWSD3



### Contact ID to GSM SMS Message Text Converter

This is an add-on board that connects to your existing control panel, to convert Contact ID to SMS. It is designed for people who wish to have personal monitoring of their security control panels. This board simply connects onto the existing alarm panels communications port, the 12V supply output and onto the telephone line. Perfect for people who wish to be in control of their security.



- Allows any panel with a Contact ID format dialer to send SMS messages
- Easy to install
- Connects to standard telephone line
- No SIM card required
- Adds SMS messaging functionality to existing alarm panels

Part No.  
SMSIB



### Universal Passive Infrared Movement Sensor

This advanced PIR body heat movement sensor is suitable for indoor use with any alarm control panel. It can detect movement up to 12m away at an angle of 110 degrees from the sensor. The detector features automatic temperature compensation to improve performance when the ambient heat level in a room changes. The adjustable pulse count function enables you to select either normal or reduced detection sensitivity levels for use in harsh environments.

- High quality dual element PIR sensor
- Micro processor controlled
- Auto temperature compensation
- Adjustable pulse count (sensitivity)
- Selectable N.O. or N.C. alarm outputs
- Selectable detection LED indicator ON / OFF
- N.C. case tamper switch

Part No.  
PIRHW



### Universal Movement Sensor With Triple Technology

This advanced indoor movement sensor can be used with any alarm control panel and incorporates 3 detection technologies designed to prevent false alarms. It is particularly suited for use in harsh environments where using a standard PIR may result in false alarms caused by rapid changes in heat, light levels or from other environmental factors. This triple technology detector requires both the PIR and microwave sensors to both simultaneously detect an intruder (using software signal analysis) before activating the alarm output. Detection range is approx. 12 metres.

- High quality quad element PIR sensor
- Adjustable microwave sensor with auto temperature compensation
- PIR look - down zone
- Selectable N.O. or N.C. alarm outputs
- 3 indicator LED's Green PIR, Yellow MWAVE, Red ALARM
- Selectable detection LED indicator ON / OFF
- N.C. Case tamper switch

Part No.  
PIRHWTT



### Complete Outdoor Siren

This product has been specifically designed to save alarm installers time and money. It combines a dual power AC/DC high powered siren, high visibility blue strobe light and tamper switch. It is housed in a moisture and UV resistant attractive industry standard external casing and all cabling is pre terminated.

- Suits all alarm control panels
- No assembly required, saving time & money on installation
- Highly durable, moisture & UV resistant external housing
- Pre-terminated wiring
- High visibility blue strobe
- High powered dual AC & DC Siren
- Tamper Switch
- Includes rear protective cover

Fully Assembled AC / DC Siren, Strobe & Tamper Switch

Part No.  
COS



### Ceiling Mounted Internal Siren

- Emits a high frequency oscillating siren intolerable to the human ear
- Mounts easily to the ceiling
- Repel intruders from your home

Part No.  
DPS



### Flush Mounted Internal Siren

- Emits a high frequency oscillating siren intolerable to the human ear
- Low profile design to mount flush with ceiling
- Repel intruders from your home

Part No.  
DPSF



### Reflex Horn Speaker

- High powered
- For use with most alarm control panels
- Includes mounting base
- Alerts occupants and neighbours of intruders

Part No.  
DRHS



### Single Tone Siren

- 12V DC
- 115dB single tone siren
- Mainly used with control panels with no internal siren driver

Part No.  
S42



### Flashing Blue Strobe Light

- Low profile blue strobe light
- Designed for use with external sirens
- Continuous rated xenon tube

Part No.  
DSBM



### Flashing Amber Strobe Light

- Low profile amber strobe light
- Designed for use with external sirens
- Continuous rated xenon tube

Part No.  
DSAM



### Concealed Reed Switch

- Perfect for mounting in the tops of doors or hidden areas
- Easy 'push-in' installation
- Compact design
- Dimensions(mm): 32(L) x 11(Dia ø)
- Available in White, Grey & Brown

Part No.  
DCR



### Roller Shutter Reed Switch

- Strong heavy duty cast housing
- Termination contacts via a stainless steel flexible conduit
- N/C contacts

Part No.  
DRSR



### Large Surface Mount Reed Switch

- Surface mounted reed switch
- Industry standard
- N/C contact with solder terminals
- Dimensions (mm): Reed - 90(W) x 13(H) x 12(D)  
Magnet - 90(W) x 13(H) x 12(D)
- White

Part No.  
DSRHDW



### Mini Surface Mount Reed Switch

- Compact design surface mount
- Industry standard
- N/C contacts
- Dimensions (mm): Reed - 63(W) x 12(H) x 20(D)  
Magnet - 63(W) x 12(H) x 11(D)
- White

Part No.  
DSRLW



### Emergency Button Switch

- When pressed will instantly trigger the alarm
- N/C & N/O contacts
- Slimline design
- Dimensions(mm): 23(W) x 76(H) x 15(D)

Part No.  
DEBS



### On/Off Key Switch

- An On/Off keyswitch with 2 keys used for various applications
- 2 positions, single pole, single throw changeover switch

Part No.  
2POS SPST

## GENERAL ALARM ACCESSORIES



### 12V DC 1.2AH Sealed Lead Acid Battery

- 12VDC / 1.2. AH
- Maintenance free sealed lead acid battery
- Non-spillable construction design
- High quality and high reliability
- Low self discharge characteristic
- Power failure backup battery

Part No.  
D12V1.2



### 12V DC 7AH Sealed Lead Acid Battery

- 12VDC / 7.0 AH
- Maintenance free sealed lead acid battery
- Non-spillable construction design
- High quality and high reliability
- Low self discharge characteristic
- Power failure backup battery

Part No.  
D12V7



### Switch Mode AC Adaptor 5V DC, 2.5 Amp

- Input - 100-240V AC / 50Hz
- Output - 5V DC regulated / 2.5 Amp
- Lead 1.8m
- Termination - DC plug

Part No.  
PS5VDC



### Low Voltage AC Plugpack 16V AC 1.5 Amp

- Input - 230-240V AC / 50Hz
- Output - 16V AC / 1.5 Amp
- Lead - 1.8m
- Termination - Bare ends

Part No.  
PS16VAC



### Switch Mode AC Adaptor 12V DC, 1.5 Amp

- Input - 100-240V AC / 50Hz
- Output - 12V DC / 1.5 Amp
- Lead - 1.8m
- Termination - DC plug

Part No.  
PS1500SM



### Low Voltage AC Adaptor 24V AC 2.0 Amp

- Input - 240V AC / 50Hz
- Output - 24V AC / 2.0 Amp
- Input lead - 1.8m
- Output lead - 1.8m
- Termination - Bare ends

Part No.  
PS24VAC



### Switch Mode Power Supply 12V DC, 5 Amp

- Input - 100-240V AC / 50Hz
- Output - 12V DC / 5.0 Amp
- Input lead - 1.5m
- Output lead - 1.8m
- Termination - DC plug

Part No.  
PS5000SM



### Figure 8 Cable 14 x 0.2mm / 100m Roll

Part No.  
DF8C



### Figure 8 Cable 24 x 0.2mm / 100m Roll

Part No.  
DF8C2



### 4 Core Cable 4 x 7/0.20mm Stranded 100m Roll

- Stranded Conductors

Part No.  
D4CC



### 6 Core Alarm Cable 6 x 7/0.2mm Stranded 100m Roll

- ACA approved security cable

Part No.  
D6CC



### Coaxial Cable RG59 75 Ohm 100m Roll

Part No.  
DCOAX



### 2 Core Coaxial Cable with Power RG59 75 Ohm 100m Roll

- Combined coax & figure 8 power cable.  
Fig 8 - (2 x 7/0.2mm Stranded)

Part No.  
DCOAXPWR24FC

## ENERGY SAVING DEVICES (ENSA)



**Makes your alarm sensors  
'Dual Purpose' by turning on  
appliances & lights automatically  
as well as activating your alarm!**

### Home Automation / Remote Lighting



This unique product simply replaces the standard light switch in a room. The lights can then automatically be turned on when installed along with a compatible wireless detector, remote control or by an existing alarm sensor that is easily retrofitted with a miniature transmitter. When used in auto mode, if the wireless detector senses movement, a door opening, or perhaps even smoke, the ENSA™ can automatically turn the lights on for a pre-determined period. By not turning on a room light unless there is activity in the room, and there is insufficient natural lighting this product saves energy. There is also a manual mode of operation, where you can turn the lights permanently on or off as per a normal light switch.

- The ENSA is a low cost solution to the home automation & energy saving control of lighting and other devices (i.e. fans), without the need to install any cable or expensive control boxes.
- The ENSA can be used in virtually any home or business for convenience, added security, power bill reduction and of course environmental benefits
- The ENSA can be installed in minutes by a licensed electrician without requiring any electrical cabling.
- The ENSA gives a unique opportunity for the security industry to enhance the function of their alarm systems by making their detectors dual purpose.

Part No.  
ENSA



### Energy Saving Automated Wireless Power Point

This unique product simply plugs into your existing power point and allows you to control any mains powered device up to 10amps via a wireless sensing device or remote control.

Common applications include connecting a lamp, fan, or air-conditioner and using a radio remote control to be able to turn your appliance on/off from virtually anywhere in your home. Alternatively, you can use a wireless detector to save energy by not turning on connected devices unless there is actually human presence detected or insufficient natural lighting. You can also retro-fit our tiny transmitter to existing alarm detectors making them dual purpose.

- Connect any mains powered device up to 10amps.
- Compatible with all Watchguard™ wireless sensors
- Easy DIY Installation
- Inbuilt adjustable daylight sensor to allow setting of light level for activation.
- Adjustable timer to allow device to turn off automatically after a set period.
- Can be used with our radio remote controls for simple on/off operation.

Part No.  
ENSAPOWERPOINT

## DIGITAL SURVEILLANCE SYSTEM



### System Includes:

#### 2 x DAY / NIGHT WEATHERPROOF COLOUR CAMERAS WITH INFRARED LED'S – 15m RANGE



- High quality CCD image sensor (not inferior CMOS type) for superior picture quality
- 12 x IR LED's for viewing in total darkness up to 15m (B&W mode)
- 420 TVL resolution, 520 x 582 pixels
- Compact size ideal for use indoors or out

#### 2 x DAY / NIGHT WEATHERPROOF COLOUR CAMERAS WITH INFRARED LED'S – 30m RANGE



- High quality CCD image sensor (not inferior CMOS type) for superior picture quality
- 24 x IR LED's for viewing in total darkness up to 30m (B&W mode)
- 420 TVL resolution, 520 x 582 pixels
- Ideal for outdoor surveillance with adjustable sunshield

#### 4 x CAMERA CONNECTION CABLES

- Pre-terminated - Combined DC power & video (2 x 10m - 1 x 20m - 1 x 30m)

#### 1 x POWER SPLIT CABLE

- Connects all 4 cameras to 1 power supply

#### 2 x SWITCH MODE LOW VOLTAGE POWER SUPPLIES

- 1 x 3Amp 12VDC (Cameras)
- 1 x 2Amp 19VDC (DVR)

#### 1 x MONITOR CONNECTION CABLE

- 1 x NETWORK CABLE (OPTIONAL USE)

Part No.  
DVR4ENTPACK

## SURVEILLANCE SYSTEM - WIRED



### 2 Camera B&W Video Surveillance System with 5.5" Monitor & 2 Dummy Cameras

This surveillance system allows you to monitor your home or business with high quality black and white images and sound. The system includes a 5.5" B/W monitor, 2 B/W surveillance cameras and 2 dummy cameras. The built-in infrared LED's enable it to monitor at night time or in low light conditions. The auto-switch function automatically alternates between the two camera views with an adjustable timer.

- Easy installation
- High quality black & white cameras
- Infra-red LED's allow monitoring at night or low light condition
- Automatically switches view between cameras
- Built in microphone and speaker



Part No.  
DIYCAM2B

## WIRELESS SURVEILLANCE SYSTEM



### Wireless Solar Powered Surveillance Camera with Movement Sensor

This revolutionary wireless solar surveillance system provides unequalled ease of installation and use. The colour surveillance camera with audio microphone is powered by a battery that is charged automatically from the in-built solar panel. The camera can be mounted directly to your wall in a sunny position, with no cabling required at all. When body movement is detected by the in-built PIR sensor, the camera transmits the video & audio signals to the supplied AV receiver inside your home or business.

- Solar powered colour camera with motion alarm activation
- Receiver simply connects to an AV input on your TV / VCR
- Can be installed in full-sun or semi-shade position
- Audible buzzer alerts you when movement is detected
- Durable weatherproof design for outdoor use
- Tilt and swivel adjustment of PIR / camera
- Long distance operation range up to 100m (line of sight)



Part No.  
VSWSC



## Wireless Micro Camera Video Surveillance System

This package includes an easy to install micro size wireless colour camera with a pinhole lens and in-built audio microphone. It is ideal for hidden surveillance applications. The audio / video (AV) receiver simply connects to your TV / VCR to view and record the camera signal. The camera can be powered either by the included mains power adaptor or by a 9 Volt battery for short-term, completely wireless video transmission.



\*Includes optional camera mounting bracket



- Pinhole camera lens for hidden video surveillance
- Receiver simply connects to an AV input on your TV / VCR
- Inbuilt microphone for combined audio monitoring
- Includes AC power adaptor for continuous camera operation plus a 9 Volt battery for optional short-term completely wireless 'Place and View' camera transmission
- Long distance operation range up to 100m (line of sight)

Part No.  
VSMCAM

## Wireless Weatherproof Video Surveillance Camera with Portable 2.5" Colour LCD Monitor

This package provides ultimate flexibility, featuring a wireless weatherproof day / night video camera and a portable 2.5" colour LCD monitor, it allows you to monitor the camera from up to 100m with the added feature of monitor portability.



- Weatherproof 2.4GHz colour day / night camera with 8 x infrared LED's
- Built-in microphone for audio monitoring
- 2.5" colour LCD monitor with in-built receiver & speaker
- Long operation range up to 100m in open area
- Includes AC power adaptors for continuous operation
- Monitor can be optionally powered by 4 x AAA batteries for short term portable use (batteries not included)



Part No.  
VSCCOIR

## Wireless Black & White Video Surveillance System

This package contains all you need to provide your home or business with affordable safety and protection. It contains 2 x black & white wireless surveillance cameras with audio and in-built infrared LED's for night vision, 1 x 5.5" black & white wireless monitor and 3 x low voltage power adaptors. The Watchguard™ 2BWIR is easy to install utilising wireless technology, simply mount the cameras and monitor then plug in the power supplies and your surveillance system is ready to use.



- 5.5" black & white with inbuilt receiver & speakers
- Has an AV output for optional connection to your TV/VCR
- Can automatically switch view between both cameras
- 2 wireless black & white, with swivel mount brackets
- Infrared LED's for short range night vision

Part No.  
2BWIR

## FIRE SAFETY PRODUCTS



### 1.8m x 1.8m Vinyl Pouch Fire Blanket

- Approved to Australian Standard AS3504 + Standards Mark
- Ideal for use on cooking oil and stove top fires
- A compact and easy to use household fire blanket
- Essential for kitchens, where 2 out of 3 home fires start
- Manufactured from 100% Woven Glass Fibre
- Handy Vinyl Pouch allows wall hanging
- Release tapes act as handles when blanket is unfolded
- 1.8m blanket is large enough to use on human body to extinguish fires



Part No.  
WGFB1.8VP

### Photoelectric Smoke Alarm

Photoelectric Smoke Alarms consist of a light emitting diode and a light sensitive sensor. The presence of suspended smoke particles in the chamber scatters the light, which is detected, setting off the alarm. Photoelectric technology is superior to ionisation technology in detecting the visible smoke produced by smouldering fires, which most commonly occur in homes.



- Latest Photoelectric Technology
- Built-in test button
- Battery missing indicator
- Non-radioactive technology
- Extra loud alarm (sound over 85dB)
- Easy installation (wall mount, bracket & screws included)
- Low battery warning
- 9V battery included



Part No.  
WG1SMKP

### Ionisation Smoke Alarm Twin Pack

Ionisation alarms detect the presence of large quantities of very small particles entering the ionisation chamber, when in sufficient quantity will cause an alarm to sound. Sufficient quantities of particles are generally only produced by flaming fires or from very hot surfaces. Ionisation alarms are more responsive to fires that start as, or quickly escalate into a flaming stage.



- Ionisation Sensor - sense visible or invisible particles of smoke at the earliest stage
- Easy installation (wall mount bracket & screws included)
- Extra loud alarm (sound over 85dB)
- Built-in test button (functional testing)
- Low battery warning
- 9V batteries included



Part No.  
WG2SMKI

## ELECTRONIC ARTICLE SURVEILLANCE (EAS)

EAS labels & tags are used as anti-theft devices. The tag or label is used with a doorway reader to detect if an item is being removed without authorisation. EAS systems are used mainly in retail stores, data centres, and libraries. When applied to items, the EAS tag / label is capable of activating an audible alarm as it passes through the doorway detector. Because of the anti-theft protection they provide, EAS systems allow more freedom for retail stores to display items that would usually be locked in display cases. This allows the consumer to examine the product more closely before purchasing.



### Doorway Readers

Locate the doorway reader at the front entrance of the shop or the cashiers in supermarket. Any product that has an EAS tag attached, must be presented to the cashier to deactivate the code; if the EAS tag hasn't been deactivated, when passing through the doorway reader, the alarm will sound, in order to notify staff members.

- 1.2m operational width
- Multiple units can be connected to cover wider entry / exit points
- High sensitivity, low false alarm rate
- Anti disturbance from metal trolleys and touch
- Uses advanced DSP microchip data processing, to speed up scanning of EAS tags
- Two alarm tones -- quick and slow
- Three alarm volumes -- high, medium and low

<b>Bandwidth</b>	7.7-8.7MHz
<b>Scan Frequency</b>	162, 171, 180, 189Hz (also available in 8.2MHz, 10.5MHz)
<b>Signal sampling rate</b>	21.8us
<b>Operating Range</b>	Soft label 1.2m / Hard tag 1.5m
<b>Alarm Volume</b>	High, Medium, Low
<b>Alarm tone</b>	Quick, Slow
<b>Dimensions</b>	1650 x 340 x 85 mm

**Part No.**  
RFTMAIN2R



### 8MHz RF Hard Tag

- Frequency: 8.2MHz
- Detection range: 1.30m-1.40m

The RFT hard tag with chrome pin is commonly used in fashion retail shops. The pin is designed to allow the tag to be pinned onto the clothing without damage. To remove, simply place the tag on top of the magnetic detacher, and the pin will release.

**Part No.**  
RFTHARDTAG



### RF Ink Tag

- Frequency: 8.2MHz
- Detection range: 1.30m-1.40m

The ink tag provides double the security for your products. It contains a small amount of highly visible ink, if anyone tries to force the tag off, the ink will spill out. Best suited for use in the clothing industry.

**Part No.**  
RFTINKTAG



### RF Bottle Tag

- Frequency: 8.2MHz
- Detection range: 1.35m-1.48m (4.43'-4.86')

The bottle tag will lock when you tighten the metal wire around the neck of a bottle. It is ideal for use in the alcohol industry for bottles of wine and spirits. To remove, simply place the tag on the magnetic detacher.

**Part No.**  
RFTBOTTLETAG



### RF Lanyard

High tensile steel wire with plastic coating for attaching hard tags to products where pushing the pin through is not possible.

**Part No.**  
RFTLANYARD



### 8MHz Adhesive RF Labels

These discreet disposable labels are designed to be placed directly on product packaging. Commonly used on books, electronics and cosmetic products.

**Part No.**  
RFTLABEL



### Magnetic Detacher

This magnetic detacher, simply mounts to the retail counter-top. The tags are simply placed on top of the detacher to safely release them.

**Part No.**  
RFTDETACHER



# **Rhino**<sup>®</sup> *Vehicle Security Products*



**VEHICLE ALARMS & IMMOBILISERS**

**PAGE 38**

**VEHICLE ALARM ACCESSORIES**

**PAGE 41**

**VEHICLE & PERSONAL TRACKING SYSTEMS**

**PAGE 43**

**MOBILE DIGITAL VIDEO RECORDERS**

**PAGE 44**

**REVERSING KITS, SENSORS & CAMERAS**

**PAGE 45**

## CAR ALARMS & ENGINE IMMOBILISERS



### Remote Controlled Car Alarm With Engine Immobiliser

The Rhino GA is a compact All-In-One design car alarm with doors, boot and bonnet protection and a single engine immobilisation circuit. It also features central locking outputs for remote keyless entry connection and visual arm / disarm confirmation via your indicators.

- 2 x compact size security coded remote controls
- Engine immobiliser via external relay (included)
- Can protect doors, boot and bonnet
- 2 stage (Pre Warning) car body impact sensor
- Alarm trigger memory
- Can connect to central locking for remote keyless entry

Part No.  
GA



### Backup Battery Car Alarm & Immobiliser

The Rhino GTR is a well featured mid-level car alarm and engine immobiliser. It is a popular choice for budget minded owners looking for most standard alarm features plus connection to their existing central locking and electric boot for keyless entry. The compact size siren is easy to install in cramped engine bays.

- 2 x Code Hopping remote controls
- 1 point engine immobilisation (onboard)
- Can protect doors, boot and bonnet
- Car body impact sensor
- Central locking relay outputs for keyless entry
- Current (voltage drop) sensing

Part No.  
GTR



### Backup Battery Car Alarm With 2 Point Immobiliser

The Rhino GTS is a highly featured mid-level car alarm and engine immobiliser. It features code hopping remote technology, a full size backup battery siren and numerous programmable features. The two onboard engine immobilisation relays can be used to cut both your starter motor and fuel pump.

- Backup battery siren
- 2 x Code Hopping remote controls
- 2 stage car body impact sensor
- 2 point engine immobilisation (on board relays)
- Protects doors, boot and bonnet
- Central locking relay outputs for keyless entry

Also Available in  
24 Volt Version  
(Model: GTS24V).  
Please Note:  
GTS24V Siren  
is non battery  
backup

Part No.  
GTS



### Australian Standards Approved Car Alarm & 3 Point Engine Immobiliser

The Rhino RAV2 is our premier Australian Standards Approved model and features a number of unique security and convenience functions found no where else. It is recommended for all high theft-risk vehicles.

- Australian standards approved (AS3749.1:2003 Class A)
- Three point engine immobilisation (onboard relays)
- Code Hopping remote technology
- Auto immobilise (passive arming)
- All points of entry alarm protection (doors, boot, bonnet)
- Audio discriminating glass break sensor
- Personal panic button via remote control
- 2 stage pre-warning car body impact sensor with ETS™

Part No.  
RA



### Australian Standards Approved Upgrade Car Alarm & Immobiliser With Wireless Keypad

Unfortunately, large numbers of high-risk vehicles are now being stolen by thieves gaining access to the owner's car keys. With the RAKP, even if your car keys are stolen (including possibly your factory remote control) the RAKP can not be disarmed without entering your chosen PIN number. The Rhino RAKP is a variant of the RA Model and is designed primarily for use in modern high theft-risk vehicles with factory remote controls. The inclusion of our special wireless keypad prevents anyone from being able to disarm the alarm and start the vehicle unless they enter the chosen 4 digit PIN number within 20 seconds of opening one of the car doors.

- Auto-Immobiliser -- The 3 onboard immobilisation circuits automatically activate 38 seconds after turning the ignition off.
- Auto Arming Alarm (Programmable) -- If the car ignition is switched off and a door is opened and closed, the alarm can be set to arm automatically.
- Manual Arming -- You can also turn the alarm function on manually via your PIN number if you don't want to use the automatic function all the time.
- The wireless keypad uses long-life lithium batteries and has backlit keys for night time illumination.

Part No.  
RAKP

## THE REVOLUTION IN CAR SECURITY RECEIVE SMS ALERT MESSAGES FROM YOUR CAR!



### Car Alarm & Immobiliser With 2-Way GSM Mobile Communication via SMS Text Messaging

The Rhino Model RAM is arguably the world's most advanced car alarm system. This system enables 2-way communication between you and your vehicle via a GSM mobile phone. The RAM is a high specification, all-in-one car alarm and immobiliser, with GSM mobile phone communication via SMS Text Messaging. SIM Card required.

- 2/3 Point engine immobilisation (2 Onboard Relays & Output)
- Battery backup siren
- Code Hopping remote technology
- All points of entry protection (Doors, Boot, Bonnet)
- Dedicated onboard audio discriminating glass break sensor
- 2 stage shock (impact) sensor with auto adjust
- All black wiring harness
- Negative pulse central locking outputs
- GSM low coverage warning
- 3 SMS controllable negative outputs

#### The RAM Can Send SMS Messages To Up To 5 Mobiles Advising:

- Alarm activation & cause – If no response, your RAM will dial the first programmed number
- Panic / duress activation
- Car low battery warning

#### By Sending An SMS Message To Your Vehicle You Can:

- Acknowledge receipt of an alarm message
- Remote immobilise the engine
- Remote arm & disarm the system
- Remote unlock the doors

Part No.  
RAM

## UPGRADE CAR ALARM SYSTEMS



### “Transformer” Upgrade Alarm System For Vehicles With Factory Keyless Entry

If your vehicle is fitted with a factory remote keyless entry system, and you would prefer not to have a second remote control on your keyring (because your ignition key is part of the factory remote control), then the Rhino Transformer is your system of choice. Whenever you lock and unlock your vehicle with the factory remote, your Transformer alarm will arm/disarm in turn. The Transformer is simply a variant of the RA system with identical features - except there is no need for remotes. The connection of engine immobilisation circuits (up to 3) in addition to the factory immobiliser is optional, but at least 2 must be connected to meet Australian Standards requirements.

- Australian standards approved AS/NZ 3749.1 2003
- Three point engine immobilisation (onboard relays)
- All points of entry protection (doors, boot, bonnet)
- 2 stage pre-alert car body impact sensor with ETS™
- Alarm memory (allows recall of the 10 most recent alarm activations in order)
- Visual arming and disarming via indicators (optional)
- Audio discriminating glass break sensor
- Backup battery siren
- All black wiring harness

Part No.  
TRANS

### “Transformer SMS” Add-On SMS Paging System For Vehicles With An Existing Alarm



\* Mobile phone not included

The “Transformer SMS” adds state-of-the-art 2 way GSM mobile phone communication to your existing factory or after-market car alarm system. If you intend to rely on the existing alarm system fitted in your vehicle, this product enables you to be notified on your mobile phone if the alarm is activated. You can also connect to your existing central locking to allow you to unlock your car from your mobile in case you ever lock your keys in your car!

- Notification of factory alarm activation via SMS text message
- Receive SMS alerts when your car battery is low
- Up to 5 people can be notified upon alarm activation
- Failure to respond to an SMS alert causes the system to ring the primary user to gain maximum attention
- 3 independent negative outputs can be controlled via SMS message these may be used for remote arming or other functions such as opening electric gates, remote immobilisation...etc.
- SMS controlled central locking outputs
- GSM sim card required

Part No.  
TSMS

## ENGINE IMMOBILISERS



### Remote Keyless Entry & Basic Immobiliser System

This product can be used to remote control your existing car central locking and electronic boot release. It has indicator flash outputs and includes a single engine immobilisation circuit. The RCXI can also be used for remote controlling your garage door, home alarm system, or your electric gate.

- Adds remote controlled functionality to existing key operated central locking
- Remote Code Hopping technology
- Operating range of approximately 80 metres
- 1 second (momentary) negative central locking outputs for each channel
- Electric boot release output
- Optional connection to flashing LED, engine immobilisation relay & indicators
- Ultra compact module dimension: 60(W) x 30(D) x 13(H) mm

Part No.  
RCXI

### Australian Standards Approved Remote Control 2 Point Engine Immobiliser



The Rhino RES Engine Immobiliser is an Australian Standards Approved System and features passive arming, all black wiring and 2 engine immobilisation circuits. It also has a negative on alarm output on door and ignition activation to allow an optional siren to be connected (model: SBB or MINISBB; see “Accessories”) for basic alarm function.

- Australian standards approved: AS/ NZS 4601:1999
- 2 point engine immobilisation (onboard relays)
- Code Hopping remote technology (anti-scanning, anti-code grabbing)
- Auto immobilise (passive arming)
- Visual arming and disarming confirmation via blinkers
- Negative pulse central locking outputs
- All black wiring harness
- Insurance approved

Part No.  
RES

### Australian Standards Approved Remote Control 3 Point Engine Immobiliser



The Rhino JAG is our top-of-the-range Engine Immobiliser and it's recommended for all high theft-risk vehicles. It is approved to the latest Australian Standard and features 3 onboard engine immobilisation relays plus all black wiring. The additional option of utilising the Rhino wireless keypad means maximum protection for your vehicle.

- Australian standards approved: AS / NZS 4601:1999 / amd1 1:2003
- Insurance approved including specialist insurers
- Three point engine immobilisation (onboard relays)
- Code Hopping remote technology (anti-scanning, anti-code grabbing)
- Auto immobilise (passive arming)
- Onboard central locking relay outputs
- Optional wireless keypad compatible
- Numerous programmable features plus upgradable to full alarm system

Part No.  
JAG

**HOME / OFFICE / MARINE / CARAVAN & PORTABLE ALARM SYSTEMS**

Please see the **Watchguard Section** of this catalogue for a wide range of alarms systems including Professional Hardwired Alarms, Wireless Alarms and Alarms with 2-Way GSM Communication Via SMS Messaging.

**Watchguard™ SMS Caravan or Portable Home Alarm**



See page 25

**Watchguard™ Marine Security System with 2-way GSM communication via SMS messaging**



See page 25

**SIRENS**



**Cabin Piezo Siren**

Repel an intruder from the cabin of your vehicle by installing this high frequency, super loud siren under the dash.

- Connect to the "Negative On Alarm" output on your alarm system
- Dimensions: 85(W) x 89(D) x 41(H) mm

Part No.  
DPS



**Coded Backup Battery Siren**

For use with Rhino RA & JAG only as these systems utilise a special data code signal to switch the siren on and off.

- Power: 12VDC
- All black wiring
- Australian standards Approved
- Dimensions: 105(W) x 11(D) x 80(H) mm

Part No.  
BBSC



**Mini Coded Backup Battery Siren**

For use with Rhino RA & JAG only as these systems utilise a special data code signal to switch the siren on and off.

- Power: 12VDC
- All black wiring
- Australian standards approved
- Dimensions: 55(W) x 65(D) x 72(H) mm

Part No.  
MINIBBSC



**Siren Battery Backup**

Universal replacement siren for most brands of car alarm. Used in Rhino GTS Car Alarm.

- Colour wiring harness
- Negative & positive trigger inputs
- Override keyswitch
- Dimensions: 105(W) x 11(D) x 80(H) mm

Part No.  
SBB



**Mini Backup Battery Siren**

Universal replacement siren for most brands of car alarm. Used in Rhino GTR & RSA Car Alarms.

- Power: 12VDC
- Used in Rhino GTR & RSA car alarm
- Negative & positive trigger inputs
- Override keyswitch
- Dimensions: 55(W) x 65(D) x 72(H) mm

Part No.  
MINISBB

**REMOTES & FREQUENCY COUNTERS**



**Single Button Fixed Code Remote**

- Fixed code technology
- For Rhino LS & GA Car Alarms

Part No.  
GLTX





## 2 Button Code Hopping Remotes

- Yellow LED GTTX:  
For Rhino RCX & RES immobilisers, WGUARDSMS & WGUARDMARINE
- Red LED GTSTX:  
For Rhino GTS Car Alarm
- Green LED GTRTX:  
For Rhino GTR Car Alarm

Part No.  
GTTX  
GTSTX  
GTRTX



## 3 Button Code Hopping Remote with LED Torch Function

- 3 button remote With LED torch
- As supplied With Rhino JAG, RA & RAM Car Alarm
- Also compatible with Rhino RCX, RES, WGUARDSMS & WGUARDMARINE

Part No.  
RCTX3-T



## 4 Button Code Hopping Remote

- As supplied with Rhino RXPROR4. Optional use with Rhino RCX, RES, JAG, RAM, WGUARDSMS & WGUARDMARINE
- Colour coded buttons with printed numbers to match GTTX / RCTX3-T  
i.e button 1 on Your RCTX4-U is the same function as button 1 on your GTTX remote

Part No.  
RCTX4-U



## RF Remote Control Frequency Counter

This tool is ideal for both home and vehicle technicians to quickly check if UHF remotes are working and re-tune to correct frequency if required.

- Large easy to read display
- Reads 250 ~ 500 MHz
- Power supply included

Part No.  
FREQCOUNTER

## Need a Replacement Remote Control for an Old Car Alarm ?



## Programmable 4 Button Replacement Remote

The Rhino PTX Remote Control can duplicate a majority of fixed code remote controls (not code hopping remotes). Fixed code means that each time the remote control is pressed, the same code is transmitted each time. The PTX remote has four buttons so that it will universally suit most alarms i.e. some remotes have just one button for arming / disarming, where others may have separate buttons for multiple functions. The same code can be copied onto multiple buttons if desired. If your original remote has a function controlled by pressing multiple buttons together, you must duplicate that code to a single button on your Rhino PTX.

- 4 channel programmable remote control
- Many uses including car alarms, home alarms, panic buttons, garage doors...
- Copies most radio frequency fixed code remote controls
- Learns in seconds
- 255-500 MHz adjustable frequency
- Battery included

Part No.  
PTX

## VEHICLE ALARM ACCESSORIES



### Ultrasonic Sensors

For detecting body movement inside the cabin of a hardtop vehicle. Easy to connect to most alarms via negative output trigger wire.



- Ultra compact sensors
- Frequency: 40 Khz crystal locked
- Adjustable sensitivity
- 12V DC

Part No.  
UD6



### Microwave Detector

For detecting body movement inside the cabin of a soft-top / convertible vehicle. Can be hidden behind non-metallic surfaces.

- Compact design
- Dual colour test LED
- Negative trigger output wire
- Adjustable sensitivity
- Dimensions: 83(W) x 80(D) x 20(H) mm

Part No.  
UD5



### Digital Tilt Sensor

Designed to help protect your wheels / detect tow away. This device detects if your car is tilted by more than a couple of degrees. Unlike mercury switches, it does not matter if your car is parked on a slope. The sensor saves in memory the angle position of your car when your alarm is armed & monitors for any changes.

- 3 dimensional movement sensing technologies (XYZ Axis)
- Digital signal processing (DSP)
- Microprocessor to instantly & continually analyse all pitch changes
- Dimensions: 40(W) x 47(D) x 10(H) mm

Part No.  
TILTSENSE2



### Dual Zone Microwave Detector

Can be used to give a warning to anyone coming too close to your vehicle & to trigger the alarm if there is movement inside the cabin. Can be hidden behind non-metallic surfaces.

- Compatible with most alarms
- Tri- colour test LED
- Negative trigger output wires
- Detects perimeter approach & internal movement
- Dimensions: 83(W) x 80(D) x 20(H) mm

Part No.  
MDDZ



### Automatic Electric Window Lifter

Automatically closes 2 power windows when your alarm is armed (2 units required for a 4 door vehicle)

- Dimensions: 70(W) x 115(D) x 27(H) mm

Part No.  
GLU400



### Electric Boot Release Motor

Add convenience to your car that is not fitted with an electric (push button) type boot / hatch release.

- Compact design
- Solenoid dimensions: 70(W) x 115(D) x 27(H) mm

Part No.  
DL105



### Standard Pinswitch

Used to detect the opening of a vehicle bonnet, boot or doors.

- Cut to adjust
- Dimensions: 35(W) x 53(L) mm

Part No.  
PIN409



### Right Angle Pinswitch

Used to detect the opening of a vehicle bonnet, boot or doors.

- Cut to adjust
- Dimensions: 45(W) x 60(L) mm

Part No.  
PIN410



### Metal Pin Switch

Used to detect the opening of a vehicle bonnet, boot or doors.

- Adjust via screw thread
- Dimensions: 5(W) x 65(L) mm

Part No.  
PINSW



### Van Sliding Door Switch

For use when installing central locking on vehicles with sliding doors such as passenger & commercial vans.

- Female switch dimensions: 82(W) x 34(D) x 15(H) mm
- Male switch dimensions: 70(W) x 26(D) x 52(H) mm

Part No.  
VANSW



### 40 Amp Changeover Relay

Commonly used for adding engine immobilisation circuits and connecting electric boot release motors to your system. Also used for central locking interfacing when vehicle does not have regular negative pulse inputs and your alarm / immobiliser also does not already have onboard central locking relays.

- 12V DC / 24V DC available
- Dimensions: 22(W) x 41(D) x 27(H) mm

Part No.  
40ARELAY



### 5mm Flashing LED Light

Ultra bright flush-mount red flashing LED light for "alarm armed" indication.

- 12V DC
- Diameter : 5 mm

Part No.  
FL5

## CENTRAL LOCKING KITS



### Heavy Duty 4 Door Central Locking Kit

Add security and convenience to your car that is not already fitted with central locking. Can be key operated or connected to any car alarm or immobiliser with central locking outputs for remote keyless entry.

This high quality door central locking kit is ideal for use in both modern and older vehicles which require high torque motors for activating stiff door locking mechanisms.

#### Kit Includes:

- 1 x control module with negative lock / unlock pulse inputs
- 2 x 5 wire master actuator / door lock motors
- 2 x 2 wire slave actuator / door lock motors
- Full wiring harness & motor mounting hardware

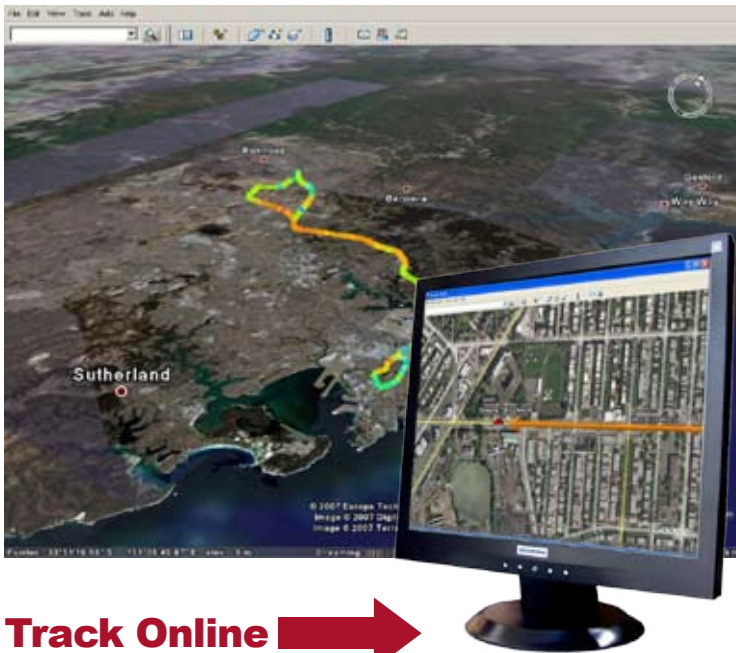
Part No.  
CLKHD

## VEHICLE & PERSONAL TRACKING SYSTEMS



**Ever Need to Know  
Where your Vehicle is  
Right Now?  
or Where it Has Been?**

These devices are designed to automatically transmit GPS coordinates to your Windows PC. When used with the included Rhino Tracks™ software, you can view the location of your vehicle using online mapping services such as Google\*



**Track Online** →

\*Google Earth is the trademark of Google Inc. The download and use are subject to applicable terms and conditions of Google Inc. RhinoCo Technology is in no way affiliated or associated with Google Inc. or any of its subsidiaries



### GPS Vehicle Tracker With 2 Way Communication & Remote Control

- GPS position tracking function via included GPRS enabled SIM card
- Locate and track your vehicle 24hrs
- Bi-direction phone conversation function
- In-car monitoring function - via mobile phone
- Geofence park function - know if your vehicle has been moved
- SOS emergency help call function - summon help to your exact location
- Send commands via mobile phone
- Report vehicle position to your PC at variable time intervals from 5sec to 5hrs

Part No.  
RHINOTRACKS-VTA

### Compact GPS Vehicle Tracker



- GPS position tracking function via included GPRS enabled SIM card
- Business-card-size compact GPS vehicle tracker
- Locate and track your vehicle 24hrs
- In-car monitoring function - via mobile phone
- Geofence park function - Know if your vehicle has been moved
- Send commands via mobile phone
- Report vehicle position to your PC at variable time intervals from 5sec to 5hrs
- External antenna for GPS and GSM reception
- Microphone port for included external microphone
- Monitor the sound/ conversation

Part No.  
RHINOTRACKS-VT

### Portable GPS Personal & Vehicle Tracker



- GPS position tracking function via included GPRS enabled SIM card
- Pocket-sized for portable personal & vehicle tracking
- Locate and track an individual or vehicle 24hrs
- Bi-Direction phone conversation function
- Built-in speaker, microphone & removable re-chargeable battery
- Audio monitoring function - via mobile phone
- Geofence security function
- SOS emergency help call function - summon help to your exact location



Part No.  
RHINOTRACKS-PT

**MOBILE DIGITAL VIDEO RECORDERS**

**Record Up To 4 Channels Plus Both The Vehicle Speed & Location**



\* Hard drive required

**In Vehicle Mobile Digital Video Recorder With GPS System**

This "Black Box" Digital Video Recorder for vehicles is ideal for monitoring driver behaviour, proving deliveries have been made or providing evidence in case of an accident. You can connect up to 4 cameras if required ie. front view, rear view, driver view, passenger / cargo view. The in-built GPS receiver overlays recorded footage with the GPS location, speed, date, time and direction of travel. Optional sensor connections include brake on/off, indicators on/off, door open, reverse gear selected plus multiple alarm sensor inputs. Recorded footage is stored on a removable hard drive and can also be backed up via a USB connection.

- High quality images, long recording time and easy event searching
- Automatic digital recording when vehicle's ignition is on
- Max. display frame rate - real-time
- Max record frame rate - 25 FPS global
- 2.5" hard disk (up to 160GB)
- Video compression methods - MPEG4 and JPEG
- Video inputs - 4 channel (BNC connectors)
- Video outputs - 1 channel (RCA connector)
- Vehicle sensors - brake, reverse, right turn, door open
- Backup options - USB (host and slave)
- Digital alarm inputs/outputs - 4 inputs / 1 output
- Recording resolution - 640 x 480

Part No.  
MDVR-GPS

**VEHICLE REVERSING KITS**

**'WATCH OUT' FOR UNSEEN OBSTACLES!**  
HELP SEE WHAT'S BEHIND YOU IN YOUR BLIND SPOTS WHEN REVERSING



**Rearview Mirror with 4.5" TFT-LCD Inbuilt Monitor & Number Plate Camera Kit**

This kit contains all you need to enable safe reversing with confidence, virtually eliminating blinds spots. The Monitor/Mirror simply fastens over your vehicles existing rear view mirror and the camera is mounted above your Number plate. When reverse gear is selected, a colour video image is instantly displayed on the in-built 4.5" TFT LCD screen.

- Video display turns on automatically while reversing
  - Inbuilt 4.5" colour TFT-LCD screen
  - Monitor resolution: 480x 234 pixels
  - Anti-glare blue glass mirror
  - Secondary video input available
  - Power: 12VDC (10W maximum power consumption)
- Camera:
- 8 x infrared LED's offer enhanced night time operation
  - Easily mounts above your number plate
  - 110o horizontal viewing angle
  - Power 12VDC >=200mA

Part No.  
VSDS-RVM4.5



**Rearview Mirror with 6" TFT-LCD Inbuilt Monitor, Number Plate Camera & 4 x Reversing Sensors**

This kit contains all you need to enable safe reversing with confidence, virtually eliminating blinds spots. The Monitor / Mirror simply fastens over your vehicles existing rear view mirror, the camera is mounted above your Number plate and the reversing sensors are mounted on your rear bumper. When reverse gear is selected, a colour video image is instantly displayed on the in-built 6" TFT LCD screen showing the rear view from the camera and the sensors indicate the distance of any obstacles in relation to the rear of the vehicle.

- Video display turns on automatically while reversing
  - Inbuilt 6" colour TFT-LCD screen
  - Monitor resolution: 234 x 480 pixels
  - Anti-glare blue glass mirror
  - Secondary video input available
  - Digital distance display of obstacles & click voice alert
  - Reversing Detectors range: 0.2m to 1.5m
  - Power: 12VDC (<=5W Maximum Power Consumption)
- Compatible with Rhino's full range of high resolution vehicle cameras (Both Internal & External)
- Camera:
- 8 x Infrared LED's offer enhanced night time operation
  - Easily mounts above your number plate
  - 110o Horizontal Viewing Angle
  - Power 12VDC >=200mA

Part No.  
VSDS-RVM6S



### Wireless Vehicle Reversing Kit - Flexible Mount 2.5" LCD Colour Monitor & Number Plate Camera with LED's for enhanced night operation

- Wireless transmission from camera to monitor allows easy installation
- 2.5" colour LCD monitor with flexible mounting arm & power adapter
- Mounting arm simply attaches via suction cap
- Power adapter plugs into cigarette lighter (aux) outlet
- Compact stylish design number plate camera with wide-angle lens and LED's for enhanced nighttime operation

Part No.  
VSRVM-WLESS



### 7" Colour LCD Monitor Style Car Reversing Kit

Designed to install on trucks, buses, and a wide range of commercial vehicles. When reverse gear is selected, the 7 inch monitor will automatically display the camera image from behind the vehicle.

- 7" LCD TFT monitor (16:9)
- Monitor resolution: 960 x 234
- Day / night compensation Function
- Secondary AV input
- Monitor dimension: 183(W) x 34(D) x 121(H) mm
- Waterproof wide angle colour camera
- In-built camera microphone
- IR remote control
- 20m waterproof camera cable
- Camera dimension: 80(W) x 44(D) x 57(H) mm

Part No.  
VSRC7

## VEHICLE CAMERAS & MONITORS



### Flush Mounted Bumper Camera with Infrared LED's

This Reversing Camera simply mounts directly into your vehicle's rear bumper and once connected to one of Rhino's In-Vehicle LCD Monitors will display a clear colour image.

- 10 x infrared LED's offer enhanced night time operation
- Easily mounts directly into the rear bumper of your vehicle
- 90° horizontal viewing angle
- Compatible with Rhino's full range of in-vehicle LCD display monitors or any other LCD display
- Power 12VDC >=200mA

Part No.  
VSDS-BUMPCAM



### Number Plate Mounted Colour Reversing Camera with Infrared LED's

This Reversing Camera simply mounts above your number plate and once connected to one of Rhino's In-Vehicle LCD Monitors will display a clear colour image.

- 8 x infrared LED's offer enhanced night time operation
- Easily mounts above your number plate
- Camera can be tilted up and down to provide the best view
- 110° Horizontal Viewing Angle
- Compatible with Rhino's full range of in-vehicle LCD display monitors or any other LCD Display
- Power 12VDC >=200mA

Part No.  
VSDS-NPCAMKIT



### Slimline Sunvisor 7" LCD Monitor with Mirror

This stylish designed 7" LCD monitor is designed to easily fit onto your existing sunvisor. It has dual video inputs and can be used to display reversing cameras, DVD's & GPS.

- Crystal clear images displayed on 7" LCD Display
- Stylish slimline design only 7mm thick
- Simply hooks on to your existing sunvisor
- Resolution - 480 x 234 pixels
- Dual Video Inputs
- Multi purpose - supports VCD / DVD / TV & GPS inputs



Part No.  
VSDS-VISOR



### Digital Reversing Mirror With In-built 4" Colour LCD Screen

This attractive accessory fastens over your vehicles existing rear view mirror. When reverse gear is selected, a wide angle colour video image is instantly displayed on the in-built 4" LCD screen. Enables safe reversing with confidence, virtually eliminating blind spots. Functions as a regular mirror when not reversing.

- Video display turns on automatically while reversing
- Inbuilt 4" Colour TFT-LCD screen with speakers & volume control
- Monitor resolution: 480x 234 pixels
- Anti-glare blue glass mirror
- Secondary AV Input for connection to DVD/GPS (Only active when vehicle hand brake is applied)
- Integrated mirror image display (Selectable via AV input module)
- Power: 12VDC
- Mirror dimension: 270(W) x 20(D) x 95(H) mm

Part No.  
VSMT-RVM



### Flush Mount Bumper-Fit Reversing Camera With Infrared LED's

Flush mount camera designed for mounting directly in the centre of your rear bumper bar. Infrared LED's offer enhanced night time operation

- 110° Horizontal Viewing Angle
- Dimensions: 65 (L) x 25 (Ø) mm

Part No.  
VSMT-BUMPCAM



### Ultra Small Wing Mount Reversing Camera

Ultra compact camera for mounting inside / outside the vehicle - such as above your number plate

- 130° Horizontal Viewing Angle
- Dimensions: 24 (L) x 19 (Ø) mm

Part No.  
VSMT-MINICAM



### Truck Reversing Camera With Infrared LED's & Microphone

Suitable for mounting inside rear windscreen (EG.4WD) or externally on a truck or van body. Infrared LED's offer enhanced night time operation.

- 150° horizontal viewing angle
- Dimensions: 104(D) x 62(W) x 62(H) mm

Part No.  
VSMT-TRUCKCAM



## VEHICLE PARKING SENSORS

The following devices are designed to aid drivers by detecting physical objects when reversing or parking. When reversing, the advanced ultrasonic sensors will detect obstacles within 2.5 metres from the rear of your vehicle. The distance between the rear bumper of the vehicle and any obstacle is indicated with escalating audible warning tones and via the visual display. The visual display indicates both the distance and direction of the obstacle in relation to the rear of the car (i.e- left or right) The alarm warning tones begin when within 1.5 metres of any obstacle.



### 2 Channel Reversing Sensor Kit



- Standard 2 sensor system
- Detection distance: <2.5 metres
- LED bar graph display for indicating
- Proximity left & right
- Designed for mounting flat on your dashboard or at the top of your windscreen
- Operating voltage: DC 12V
- Main Unit: 75(W) x 105(D) x 25(H) mm

Part No.  
REVERSE2

### 4 Channel Reversing Sensor Kit



- Premium 4 sensor system
- Detection distance: <2.5 metres
- LED display designed for mounting on the top of your dashboard or rear parcel shelf
- Colour LED bar graph display for
- Indicating proximity left & right
- Operating voltage: DC 12V
- Main unit: 75(W) x 105(D) x 25(H) mm

Part No.  
REVERSE4

#### WARNING:

Both reversing cameras and parking sensors are designed only as an aid to drivers. They should never be considered as a substitute for normal driver responsibility. Proper driving technique and use of mirrors whilst reversing should always be observed by the driver.

# **EASYPBX<sup>®</sup> Business Phone Systems**



**PBX BUSINESS PHONE SYSTEMS**

**PAGE 48**

**BUSINESS PHONE SYSTEMS  
ACCESSORIES**

**PAGE 48**

## PBX BUSINESS PHONE SYSTEM

Our range of EasyPBX phone systems have been specifically designed to provide a user friendly and cost effective solution for business communication. Each system is fully expandable and can be individually tailored to suit your business via the programmable function keys. You can also use the optional VoIP expansion card, which not only reduces or eliminates call costs, but also enables seamless integration between branches anywhere in the world.

### Digital PBX Keyphone System with 4 x LCD Handsets



**System Includes:**

- 4 x LCD Display Handsets
- 1 x PBX Central Control Module

**Main Features:**

- Supports up to 16 handsets and 6 incoming PSTN lines
- Expansion cards available (Voice Mail, Automated Attendant, Automated greeting, Caller ID, Door phone, VoIP trunk / extension)
- Automatic Call Distribution
- Call transfer, Call Forward, Call Park, Call Barring, Call Queuing, Call Override
- Conference Calling
- Do not disturb
- User set alarms
- Least Cost Routing
- Time Based Routing
- Internal or External hold music
- Paging and Intercom
- Distinctive Ring
- Speed and one touch dialing
- Optional external battery backup
- Plus many more...

**Option 1** - White Phone

**Option 2** - Black Phone



Part No.  
EASYPBX-PACK4

## PBX PHONE SYSTEMS ACCESSORIES

### 8 Line Digital Keyphone Handset



- 12 programable flexible function keys
- Two wire fully handsfree system
- Allows for internal paging and playing system hold music
- Will display current date, time, and a set name
- Can display caller ID with optional expansion card installed
- Available in both white and black

Part No.  
EASYPBX-PHONE8

### 56 key Digital Operator Switchboard



- 50 fully programmable function keys
- May be used as one touch speed dial keys, monitoring incoming lines / stations / call parks etc

Part No.  
EASYPBX-BOARD56



### Digital Automated Attendant Unit

- Allows for 256 seconds of voice menus
- Fully automated interactive voice response
- Supports two concurrent sessions
- Supports separate day and night modes
- Multiple units may be stacked to increase total concurrent ports.

Part No.  
EASYPBX-VACARD



### Voicemail Expansion Card

- 10 and 20 hours versions available
- Four concurrent sessions
- Supports up to 500 mailboxes
- Voice attendant
- Can be enabled manually or through time of day setting

Part No.  
EASYPBX-VMCARD



### Caller ID Expansion Card

- Enables the PBX to detect the numbers of incoming callers
- Passes caller ID though to enabled handsets
- Allows for screening of callers based on phone number
- Four Port

Part No.  
EASYPBX-IDCARD



### Single Line Voice Greeting Card

- Generally used in small installations
- Plays a greeting and puts the call on queue if no users are available to take a call
- Supports different messages for day and night modes

Part No.  
EASYPBX-OHVMCARD



### RS232 Interface expansion card

- Allows programming via a computer
- Enables the PBX call metering features

Part No.  
EASYPBX-RS232



### Voice Over IP Expansion Card

- 4/8 port internal VoIP card - does not use incoming lines
- Allows for seamless dialplan integration between two or more EasyPBX systems at different sites anywhere in the world
- Out of office users can register with the unit using software VoIP phones
- Make free\* intraoffice calls and transfers (\*Excludes any associated data costs)
- Can register to any SIP based ITSP (ie Engin) to allow for low cost local and international calling
- Can be combined with the Digital Automated Attendant Unit to automatically route calls to any office

Part No.  
EASYPBX-VOIPCARD



### LINKSYS VoIP Analogue Telephone Adapter

- Enables legacy PBX hardware for VoIP
- Provides routing and QoS functions, allowing you to share your existing internet connection without sacrificing call quality
- Configuration via a simple web interface
- Includes two standard telephone sockets for phones or fax machines with independent phone numbers
- Compatible with all common telephone features, such as Caller ID, Call Waiting and Voicemail

Part No.  
VOIP-VOICEBOX



### Australian 606 to US Modular Adapter

- Often used in older buildings
- 6P4W adapter

Part No.  
606M



### 10, 20 and 30 Metre Telephone Extension Leads

- Flexible multistranded wire
- Fitted with 6P4W modular plugs
- Can be used with the 606 adapter above

Part No.  
PHONEEXT10  
PHONEEXT20  
PHONEEXT30

## 1. DEFINITION

The expression "The Company", when referred to in these Terms and Conditions, refers to CORNICK PTY LTD ABN 74 001 621 610.

## 2. GENERAL

These Terms and Conditions of Sales apply to the sales of goods and services manufactured or supplied by The Company.

Any order received by The Company is deemed to be an order incorporating these Terms and Conditions and no variation or cancellation of any of these Terms and Conditions shall be binding on The Company unless assented to by The Company in writing.

Each order placed by the customer shall be & be deemed to be a representation by it, made at the time that it is solvent & able to pay all of its debts as & when they fall due. Failure to pay The Company in accordance with these terms shall be & be deemed to be conclusive evidence that the customer had no reasonable grounds for making the representation hereof & that the representations were unconscionable, misleading and deceptive.

## 3. ACCEPTANCE

Any quotation by The Company is not to be construed as an offer or obligation to sell and The Company reserves the right, at its option, to accept or reject any orders received.

## 4. PRICES

All prices charged/quoted shall be The Company's prices ruling at the date of despatch. Verbal quotations are subject to written confirmation which will be given when requested. All goods are sold and all prices are quoted FOB ex-works The Company unless otherwise specified. The Company reserves the right at any time to make reasonable adjustments of prices in relation to fluctuations in The Company's cost of labour, material, goods or transport and also in relation to any changes in currency exchange rates or duty which affect The Company's costs for imported goods.

Unless expressly noted all prices charged/quoted are exclusive of GST. All government imposts of GST or any equivalent as separately itemised on The Company's invoices are to the customer's account.

## 5. CANCELLATION OR VARIATION

A contract may, at The Company's option, be terminated in the event of insolvency of the purchaser or the purchaser being placed in liquidation, whether voluntarily or otherwise. A purchaser may only vary an order if such variation is accepted by The Company in writing and any variation or cancellation may only occur on terms which will provide for The Company to be indemnified by the purchaser against any loss or damages. Cancellations will attract a cancellation fee and must be at least 90 days prior to current due delivery date. No cancellation will be accepted on indented products. Re-schedules must be at least 45 days prior to the current due delivery date and any item may be deferred only once, up to a maximum of 90 days from the original requested date.

## 6. PACKING

Unless otherwise indicated prices include standard cases or packing.

## 7. DELIVERY

Unless otherwise stated in writing the price quoted is ex The Company's store where stocked. Where delivery is requested beyond this point The Company may, at its discretion, agree to act as agent for the purchaser in this matter and all costs for cartage and insurance will be for the purchaser's account.

## 8. TERMS OF PAYMENT

Cash on Delivery otherwise expressly agreed to in writing. The Company reserves the right to deliver and invoice any item or items comprising the whole or part of any order. Failure of The Company to deliver any part of an order shall not entitle the purchaser to repudiate the contract.

## 9. CLAIMS

The following conditions relating to the return of goods for credit apply to all goods returned for this purpose.

9.1 Goods returned must be accompanied by a Delivery Docket stating original invoice number, date of purchase and reason for return.

9.2 Non-standard equipment made to special order cannot be credited under any circumstances.

9.3 Inward freight packing and delivery charges are the responsibility of the purchaser.

9.4 Goods will only be accepted for credit to the extent of that wrongly or over-supplied.

9.5 All returns must be in good order and condition, unused and in original packaging. No claims by the purchaser need be recognised unless made in writing within fourteen days after delivery of the goods to the purchaser.

No claim for damage or resultant expense direct or indirect in respect of any goods shall in any case exceed the invoice price of the goods in respect of any damages or expense shall arise. All damage or expense over and above such invoice shall be the responsibility of the purchaser.

## 10. RISKS

Risk in the goods purchased shall, unless otherwise agreed in writing, pass to the purchaser upon delivery of the goods to the purchaser or his agent or to a carrier commissioned by the purchaser.

## 11. PATENTS

To the best of The Company's knowledge goods sold to the purchaser will not infringe any patent, trade mark, registered design or copyright of any third party but The Company shall in no circumstances be liable to the purchaser in respect of any such infringement constituted by the sale or use of the goods.

## 12. PERFORMANCE AND REPRESENTATION

Any figures or estimates given for performance of goods are based upon The Company's experience and are such as The Company would expect to obtain on test. But The Company will only accept liability for failure to obtain the figures or estimates given when such figures or estimates are guaranteed in writing within specified margins. The purchaser acknowledges that neither The Company nor any person purporting to act on its behalf has made any representation or given any promise or undertaking which is not expressly set out in the contract whether as to the fitness of the goods for any particular purpose or any other matter.

## 13. CONDITIONS AND WARRANTIES

All conditions and warranties expressed or implied by statute, the common law equity trade custom or usage or otherwise howsoever are hereby expressly excluded to the maximum extent permitted by law. Where so permitted the liability of The Company for a breach of a condition or warranty that cannot be excluded is limited (at The Company's option) to the replacement or repair of the goods or the supply of equivalent goods or the cost of replacing or repairing the goods or of acquiring equivalent goods. The Company shall not be liable in any way whatsoever for indirect or consequential loss or damage whatsoever (whether based on tort or contract or otherwise). It is a condition of this contract that the purchaser shall not use the goods for the installation in or in association with aircraft. Goods are not authorised for use in life support devices, systems intended for surgical implant into the body or for applications intended to support or sustain life or where the failure of the product would ordinarily create a situation where personal injury or death is likely to occur. In the event the goods are so incorrectly used, The Company shall be exempt from all liability whatsoever and the purchaser hereby indemnifies The Company in respect of any claims, demands, suits or proceedings whatsoever resulting from such misuse of the goods. The Company warrants its products to be in conformance with its own plans and specifications and to be free from defects in materials and workmanship under normal use and service for 12 months from the date stamp control on the product, or for products not having a date stamp, for twelve months from the date of original purchase unless the installation instructions or catalogue sets forth a shorter period, in which case the shorter period shall apply. The Company's obligation shall be limited to repairing or replacing, at its option, free of charge for materials or labor, any part which is proved not in compliance with The Company's specifications or proves defective in materials or workmanship under normal use and service. The Company shall have no obligation under this Limited Warranty or otherwise if the product is altered or improperly repaired or serviced by anyone other than The Company. For warranty service, return transportation prepaid, to 9 Hannabus Place McGraths Hill NSW 2756 Australia.

There are no warranties, expressed or implied, of merchant ability, or fitness for a particular purpose or otherwise, which extend beyond the description on the face hereof. In no case shall The Company be liable to anyone for any consequential or incidental damages for breach of this or any other warranty, express or implied, or upon any other basis of liability whatsoever, even the loss or damage is caused by its own negligence or fault. The Company does not represent that the products it sells may not be compromised or circumvented; that the products will prevent any personal injury or property loss by burglary, robbery, fire or otherwise; or that the products will in all cases provide adequate warning or protection. Customer understands that a properly installed and maintained alarm system may only reduce the risk of a burglary, robbery, or fire without warning, but it is not insurance or a guarantee that such will not occur or that there will be no personal injury or property loss as a result.

Consequently, The Company shall have no liability for any personal injury; property damage or other loss based on a claim the product failed to give any warning. However, if The Company is held liable, whether directly or indirectly, for any loss or damage arising under this limited warranty or otherwise, regardless of cause or origin, The Company's maximum liability shall not in any case exceed the purchase price of the product, which shall be the complete and exclusive remedy against The Company. This warranty replaces any previous warranties and is the only warranty made by The Company on this product. No increase or alteration, written or verbal, of the obligations of this Limited Warranty is authorised.

## 14. TITLE TO GOODS

14.1 Notwithstanding delivery of the goods to the purchaser, until the purchaser has effected full payment for the Goods and any other goods previously supplied by The Company:

- legal title to the Goods will remain with The Company;
- the risk in the Goods will pass to the purchaser on delivery to the purchaser or its agent;
- the relationship between The Company and the purchaser will be fiduciary;

14.2 The Purchaser will:

- hold the Goods as bailee for The Company;
- keep the goods separate from other goods; and
- label the goods so that they are identifiable as the goods of The Company;

14.3 With The Company's consent (which is given) the purchaser is at liberty to sell the Goods, in the ordinary course of the purchaser's business, provided that the money from the sale will:

- be held in a separate account in trust for the vendor;
- not be mingled with other money; and
- not be placed into an overdrawn account

14.4 The purchaser is not an agent of The Company in any sale of the Goods by the purchaser.

14.5 After the happening of an Event of Default, the vendor may without demand retake possession of the Goods and may without notice sell the Goods on such terms and in such a manner as it determines and will be entitled to deduct all expenses incurred. For the purposes of recovering possession and without limiting the generality of the foregoing, the purchaser irrevocably authorises and licenses The Company and its servants and agents to enter any premises where any Goods may be stored and to take possession of the Goods.

## 15. RECOVERY OF COSTS

The customer will pay to The Company any costs and expenses incurred by it or its solicitors, legal advisers, mercantile agents and other parties acting on The Company's behalf in respect of anything instituted or being considered against the customer whether for debt, possession of any goods or otherwise.

## 16. FORCE MAJEUR

The Company will not be in default or in breach of any contract with the customer by as a result of Force Majeur. Force Majeur means beyond the reasonable control of The Company and includes any strike or lockout either directly or indirectly by any supplier of goods or services.

## 17. LEGAL CONSTRUCTION

Except as may be otherwise agreed by The Company, the contract shall be governed by the laws of the State of NSW.

# Fax Order Form

Fax your order to: **02 4577 4885**



**Customer Details:**

Company: \_\_\_\_\_  
 Contact: \_\_\_\_\_  
 ABN No. \_\_\_\_\_  
 Postal Address: \_\_\_\_\_  
 \_\_\_\_\_  
 State: \_\_\_\_\_ Post Code: \_\_\_\_\_  
 Phone: \_\_\_\_\_ Fax: \_\_\_\_\_  
 Mobile: \_\_\_\_\_  
 Email: \_\_\_\_\_

**Order No.** \_\_\_\_\_

**Payment Details:**

- Account - A/C # \_\_\_\_\_
- Cheque / Money Order
- Direct Deposit
- Mastercard
- Visa
- Amex

Card No. \_\_\_\_\_

Exp Date: \_\_\_ / \_\_\_

Card Holders Signature: \_\_\_\_\_

*(Please Note: Credit card charges may apply)*

**Delivery Details:**

- Express Post (Up to 3kg only)
- Road Freight (Std Road Freight Charges Apply)
- Pick Up - Location:
  - McGraths Hill
  - Haberfield
  - Villawood
  - Wollongong
- Your Nominated Freight Carrier

On all pick up items sales staff will call to confirm availability & pick up times

Company: \_\_\_\_\_  
 Phone: \_\_\_\_\_  
 Account Code: \_\_\_\_\_

**Special Instructions:** \_\_\_\_\_

**Delivery Address:** \_\_\_\_\_

State: \_\_\_\_\_ Post Code: \_\_\_\_\_

Part No.	Description	Qty	Unit Price	Total Price

**Please Fax to RhinoCo Technology on  
02 4577 4885**

<b>Total Order Value</b>	<b>\$</b>
<b>Delivery</b>	<b>\$</b>
<b>GST</b>	<b>\$</b>
<b>ORDER TOTAL</b>	<b>\$</b>

## INTERNATIONAL HEADQUARTERS



### **SALES – DESIGN – ENGINEERING**

**Trading Hours:** 8:30am – 5:00pm Monday to Friday

**Address:** 9 Hannabus Place, McGraths Hill, NSW 2756 Australia

**Phone:** +61 2 4577 4708 Fax: + 61 2 4577 4885

## INTERNATIONAL SALES OFFICES & MANUFACTURING



### **UK SALES OFFICE**

**Address:** Top Floor, 11 Boulevard  
Weston-Super-Mare, BS23 1NR,  
United Kingdom

**Cell:** +44 (0) 7964 247 975

**Phone/ Fax:** +44 (0)1934 316252

**Email:** richard@rhinoco.co.uk



### **ITALY SALES OFFICE**

**Address:** 24 Piazza Garibaldi, 98034  
Francavilla Di Sicilia (ME) Italy

**Phone:** (+390) 942 989281

**Cell:** +39 0942 989241

**Email:** sales@rhinoco.it



### **SOUTH AFRICA SALES OFFICE**

**Address:** Route 21 Corp. Park, Unit c3  
Prospect Close 311 Regency Drv,  
Irene Ext 30 South Africa

**Phone:** (+27) 12346626

**Email:** southafrica@rhino.com.au



### **CHINA OFFICE**

**Phone:** (+86) 755 83745889

**Email:** china@rhino.com.au



### **KOREA OFFICE**

**Phone:** (+82) 32 833300

**Email:** korea@rhino.com.au



### **TAIWAN OFFICE**

**Phone:** (+886) 6355188

**Email:** taiwan@rhino.com.au

## NATIONAL SALES SHOWROOMS

### **HABERFIELD SALES SHOWROOM**

**Trading Hours:**

9:00am - 5:00pm Monday to Friday

9:00am - 1:00pm Saturday

**Address:** 223 Ramsay Street,  
Haberfield, NSW 2045 Australia

**Phone:** +61 2 9716 0444

**Fax:** + 61 2 9799 2024

### **VILLAWOOD SALES SHOWROOM**

**Trading Hours:**

9:00am - 5:00pm Monday to Friday

9:00am - 1:00pm Saturday

**Address:** 71 Middleton Road,  
Villawood, NSW 2163 Australia

**Phone:** +61 2 9743 8222

**Fax:** + 61 2 9743 8590

### **WOLLONGONG SALES SHOWROOM**

**Trading Hours:**

9:00am - 5:00pm Monday to Friday

**Address:** 85 Princes Highway  
Fairy Meadow, NSW 2519 Australia

**Phone:** +61 2 4228 8737

**Fax:** + 61 2 4228 8736



**Australian Inspired Electronic Security – Since 1978**

Specifications may vary without notice. Products may vary from illustrations. Prices shown exclude GST and are available to qualified trade/wholesale customers only. For terms & conditions please visit: <http://www.rhinosecurity.com/tc.htm>

RhinoCo Technology Copyright © 2008 All Rights Reserved. Reproduction in whole or part is prohibited without the written consent of the company.

**sales@rhino.com.au - www.rhino.com.au**